

UNITED STATES
DEPARTMENT OF THE INTERIOR
GEOLOGICAL SURVEY

30-045-21879

5. LEASE DESIGNATION AND SERIAL NO.

SF-077651

6. IF INDIAN, ALLOTTEE OR TRIBE NAME

7. UNIT AGREEMENT NAME

8. FARM OR LEASE NAME

Richardson

9. WELL NO.

#15

10. FIELD AND POOL, OR WILDCAT

Blanco Mesaverde

11. SEC., T., R., M., OR BLK.
AND SURVEY OR AREA

Section 15-31N-12W

12. COUNTY OR PARISH

San Juan

13. STATE
New Mexico

15. DISTANCE FROM PROPOSED*

LOCATION TO NEAREST
PROPERTY OR LEASE LINE, FT.
(Also to nearest drlg. unit line, if any)

16. NO. OF ACRES IN LEASE

320

17. NO. OF ACRES ASSIGNED
TO THIS WELL

320

18. DISTANCE FROM PROPOSED LOCATION*
TO NEAREST WELL, DRILLING, COMPLETED,
OR APPLIED FOR, ON THIS LEASE, FT.

19. PROPOSED DEPTH

5150

20. ROTARY OR CABLE TOOLS

Rotary

21. ELEVATIONS (Show whether DF, RT, GR, etc.)

6204 GR

22. APPROX. DATE WORK WILL START*

23.

PROPOSED CASING AND CEMENTING PROGRAM

SIZE OF HOLE	SIZE OF CASING	WEIGHT PER FOOT	SETTING DEPTH	QUANTITY OF CEMENT
13-3/4"	9-5/8"	32.30#	300'	300 Sacks
8-3/4"	7"	23#	4600'	200 Sacks
6-3/4"	4-1/2"	10.50#	4500'-5150'	150 Sacks
	1-1/2"	2.9#	5100'	

PROPOSE TO:

Drill 13-3/4" Hole.

Set 300' Of 9-5/8" Casing. Cement With 300 Sacks.

Drill 8-3/4" Hole To Approximately 4600'.

Run 7" Casing. Cement With 200 Sacks.

Gas Drill 6-3/4" Hole To Approximately 5150'.

Run 4 1/2" Liner From 4500' To 5150'. Cement With 150 Sacks.

Perforate Mesaverde Formation.

Sand/Water Frac Mesaverde Formation With 40,000 Gallons Water & 40,000# Sand.

Run 1 1/2" Tubing.

Install Well Head.

IN ABOVE SPACE DESCRIBE PROPOSED PROGRAM: If proposal is to deepen or plug back, give data on present productive zone and proposed new productive zone. If proposal is to drill or deepen directionally, give pertinent data on subsurface locations and measured and true vertical depths. Give blowout preventer program, if any.

24.

SIGNED

TITLE

District Superintendent

DATE

August 28, 1975

(This space for Federal or State office use)

PERMIT NO.

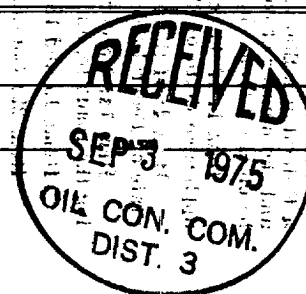
APPROVAL DATE

APPROVED BY

TITLE

CONDITIONS OF APPROVAL, IF ANY:

*See Instructions On Reverse Side



**NEW MEXICO OIL CONSERVATION COMMISSION
WELL LOCATION AND ACREAGE DEDICATION PLAT**

Form C-102
Supersedes C-128
Effective 1-1-65

All distances must be from the outer boundaries of the Section.

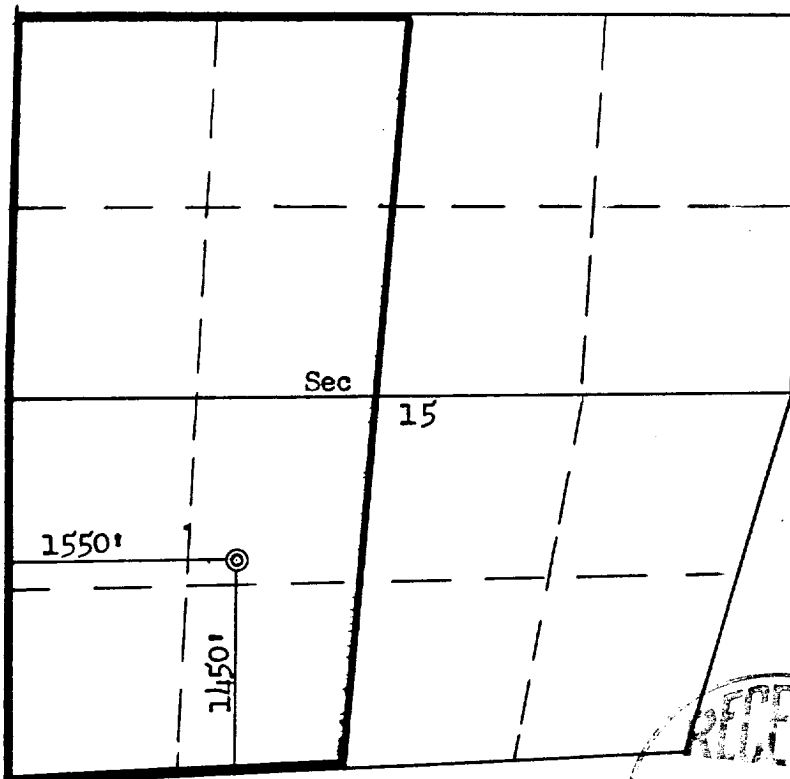
Operator Aztec Oil & Gas Company			Lease Richardson		Well No. #15 2A
Unit Letter K	Section 15	Township 31N	Range 12W	County San Juan	
Actual Footage Location of Well: 1450 feet from the South line and 1550 feet from the West line					
Ground Level Elev. 6204	Producing Formation Mesa Verde	Pool Blanco		Dedicated Acreage: 301.02 320 Acres	

1. Outline the acreage dedicated to the subject well by colored pencil or hachure marks on the plat below.
2. If more than one lease is dedicated to the well, outline each and identify the ownership thereof (both as to working interest and royalty).
3. If more than one lease of different ownership is dedicated to the well, have the interests of all owners been consolidated by communitization, unitization, force-pooling, etc?

☐ Yes ☐ No If answer is "yes," type of consolidation _____

If answer is "no," list the owners and tract descriptions which have actually been consolidated. (Use reverse side of this form if necessary.) _____

No allowable will be assigned to the well until all interests have been consolidated (by communitization, unitization, forced-pooling, or otherwise) or until a non-standard unit, eliminating such interests, has been approved by the Commission.



Scale: 1"=1320'



CERTIFICATION

I hereby certify that the information contained herein is true and complete to the best of my knowledge and belief.

Name _____
 Position
District Superintendent
 Company
Aztec Oil & Gas Company
 Date
August 28, 1975

I hereby certify that the well location shown on this plat was plotted from field notes of actual surveys made by me or under my supervision, and that the same is true and correct to the best of my knowledge and belief.

Date Surveyed
June 10, 1975
 Registered Professional Engineer and/or Land Surveyor
Fred B. [Signature]
 Certificate No.
3950