

UNITED STATES
DEPARTMENT OF THE INTERIOR
GEOLOGICAL SURVEY

30-045-21880

APPLICATION FOR PERMIT TO DRILL, DEEPEN, OR PLUG BACK

1a. TYPE OF WORK
DRILL ☒ DEEPEN ☐ PLUG BACK ☐

b. TYPE OF WELL
OIL WELL ☐ GAS WELL ☒ OTHER ☐ SINGLE ZONE ☒ MULTIPLE ZONE ☐

2. NAME OF OPERATOR
Aztec Oil & Gas Company

3. ADDRESS OF OPERATOR
P. O. Drawer 570, Farmington, New Mexico 87401

4. LOCATION OF WELL (Report location clearly and in accordance with any State requirements.)*
At surface 1450' FSL & 1450' FEL
Section 15-31N-12W
At proposed prod. zone

14. DISTANCE IN MILES AND DIRECTION FROM NEAREST TOWN OR POST OFFICE*

15. DISTANCE FROM PROPOSED*
LOCATION TO NEAREST
PROPERTY OR LEASE LINE, FT.
(Also to nearest drlg. unit line, if any)

16. NO. OF ACRES IN LEASE
320

17. NO. OF ACRES ASSIGNED
TO THIS WELL

320 309.55

18. DISTANCE FROM PROPOSED LOCATION*
TO NEAREST WELL, DRILLING, COMPLETED,
OR APPLIED FOR, ON THIS LEASE, FT.

19. PROPOSED DEPTH
5250'

20. ROTARY OR CABLE TOOLS

Rotary

21. ELEVATIONS (Show whether DF, RT, GR, etc.)

6278 GR

22. APPROX. DATE WORK WILL START*

23. PROPOSED CASING AND CEMENTING PROGRAM

| SIZE OF HOLE | SIZE OF CASING | WEIGHT PER FOOT | SETTING DEPTH | QUANTITY OF CEMENT |
|--------------|----------------|-----------------|---------------|--------------------|
| 13-3/4" | 9-5/8" | 32.30# | 300' | 300 Sacks |
| 8-3/4" | 7" | 23# | 4600' | 200 Sacks |
| 6-3/4" | 4-1/2" | 10.50# | 4500'-5250' | 150 Sacks |
| | 1-1/2" | 2.9# | 5200' | |

PROPOSE TO:

Drill 13-3/4" Hole.
Set 300' Of 9-5/8" Casing. Cement With 300 Sacks.
Drill 8-3/4" Hole To Approximately 4600'.
Run 7" Casing. Cement With 200 Sacks.
Gas Drill 6-3/4" Hole To Approximately 5250'.
Run 4 1/2" Liner From 4500' To 5250'. Cement With 150 Sacks.
Perforate Mesaverde Formation.
Sand/Water Frac Mesaverde Formation With 40,000 Gallons Water & 40,000# Sand.
Run 1 1/2" Tubing.
Install Well Head.

IN ABOVE SPACE DESCRIBE PROPOSED PROGRAM: If proposal is to deepen or plug back, give data on present productive zone and proposed new productive zone. If proposal is to drill or deepen directionally, give pertinent data on subsurface locations and measured and true vertical depths. Give blowout preventer program, if any.

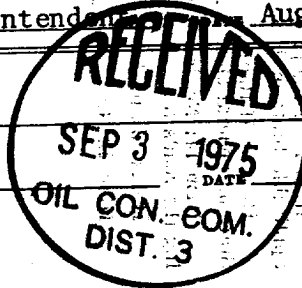
24. SIGNED Joe C. Salazar TITLE District Superintendent August 28, 1975

(This space for Federal or State office use)

PERMIT NO. _____ APPROVAL DATE _____

APPROVED BY _____ TITLE _____
CONDITIONS OF APPROVAL, IF ANY:

Okal



*See Instructions On Reverse Side

**NEW MEXICO OIL CONSERVATION COMMISSION
WELL LOCATION AND ACREAGE DEDICATION PLAT**

Form C-102
Supersedes C-128
Effective 1-1-65

All distances must be from the outer boundaries of the Section.

| | | | | |
|--|--|----------------------------|--|----------------------------|
| Operator Aztec Oil & Gas Company | | Lease Richardson | | Well No. #14 12A |
| Unit Letter J | Section 15 | Township 31N | Range 12W | County San Juan |
| Actual Footage Location of Well: 1450 feet from the South line and 1450 feet from the East line | | | | |
| Ground Level Elev. 6278 | Producing Formation Mesa Verde | Pool Blanco | Dedicated Acreage: 309.55320 Acres | |

1. Outline the acreage dedicated to the subject well by colored pencil or hatchure marks on the plat below.
2. If more than one lease is dedicated to the well, outline each and identify the ownership thereof (both as to working interest and royalty).
3. If more than one lease of different ownership is dedicated to the well, have the interests of all owners been consolidated by communitization, unitization, force-pooling, etc?

☐ Yes ☐ No If answer is "yes," type of consolidation _____

If answer is "no," list the owners and tract descriptions which have actually been consolidated. (Use reverse side of this form if necessary.) _____

No allowable will be assigned to the well until all interests have been consolidated (by communitization, unitization, forced-pooling, or otherwise) or until a non-standard unit, eliminating such interests, has been approved by the Commission.

CERTIFICATION

I hereby certify that the information contained herein is true and complete to the best of my knowledge and belief.

Name *Joe C. Salmon*
Joe C. Salmon

Position
District Superintendent

Company
Aztec Oil & Gas Company

Date
August 28, 1975

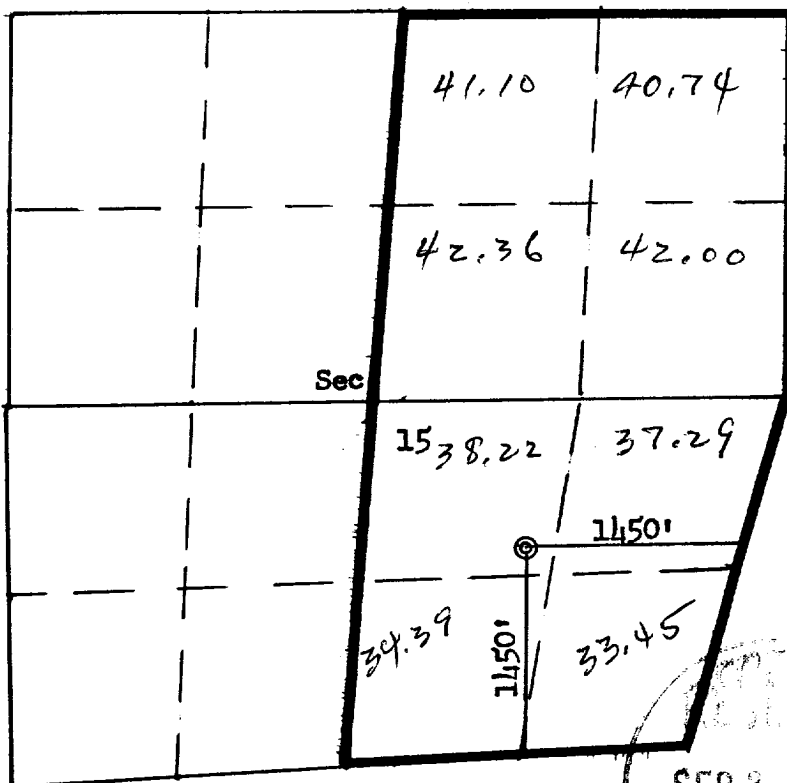
I hereby certify that the well location shown on this plat was plotted from field notes of actual surveys made by me or under my supervision, and that the same is true and correct to the best of my knowledge and belief.

Date Surveyed
June 10, 1975

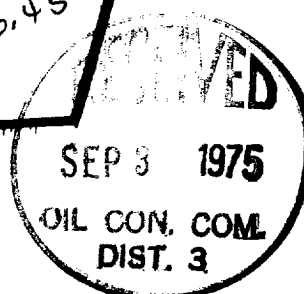
Registered Professional Engineer and/or Land Surveyor

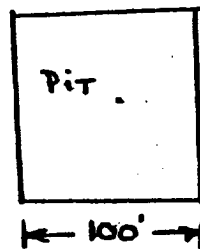
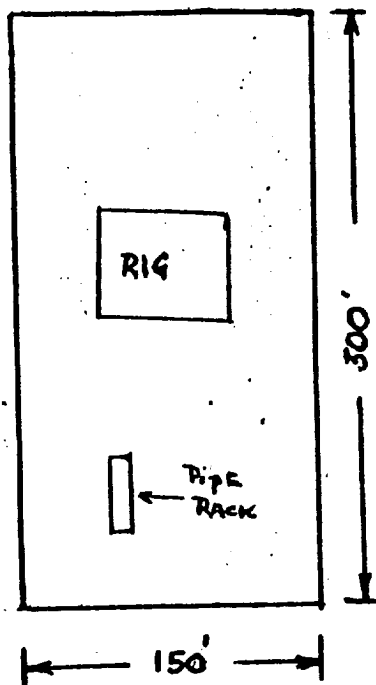
Fred B. Kerr
Fred B. Kerr

Certificate No.
3950



Scale: 1" = 1320'





LOCATION LAYOUT



AZTEC OIL & GAS COMPANY

P. O. DRAWER 570
FARMINGTON, NEW MEXICO 87401

August 28, 1975

United States Geological Survey
P. O. Box 959
Farmington, New Mexico

Attention: Mr. P. T. McGrath

RE: Blowout Preventer Plan

Dear Sir:

All drilling and completion wells will be equipped with 8" Shaffer LWP double hydraulic blowout preventers and a 2000 "C" Payne Hydraulic closing unit with steel line.

The preventer is 3000# working pressure and 6000# test.

All crews will be thoroughly trained in the operation of this preventer. The preventer will be tested at the beginning of every tower change to insure proper operation.

Joe C. Salmon
Joe C. Salmon
District Superintendent

JCS/dg



AZTEC OIL & GAS COMPANY

P.O. DRAWER 570
FARMINGTON, NEW MEXICO 87401

August 28, 1975

United States Geological Survey
P. O. Box 959
Farmington, New Mexico

Attention: Mr. P. T. McGrath

Dear Sir:

Enclosed please find map showing existing roads and planned access roads to Aztec Oil & Gas Company's Richardson #14 well. The locations of tank batteries and flow lines will be on location with well.

There will be no camps or air strips.

Also enclosed is location layout showing approximate location of rig, pits and pipe rights.

Water supply will be San Juan River.

In the event of a dry hole, location will be graded and reseeded according to Bureau of Land Management standards.

Joe C. Salmon
DB

Joe C. Salmon
District Superintendent

JCS/dg



