

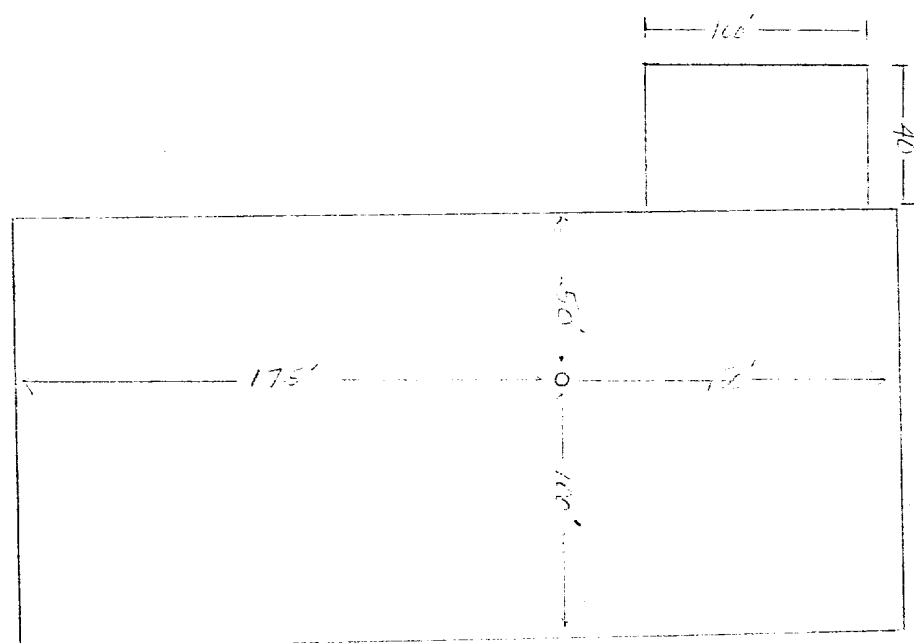
DEVELOPMENT PLAN
CANEPLE GAS COM NO. 1A
SE/4 SE/4 SECTION 18, T-31-N, R-10-W

The proposed location is near a pipeline road, approximately .2 mile from a highline, and approximately 2,000 feet of new road will be constructed. The nearest well is the Canepile Gas Com "C" No. 1, completed in the Pictured Cliffs formation, about 1/2 mile northwest of the proposed location. Soil conditions consist of sandy clay, sparse vegetation with few pinon trees in the vicinity. Archaeological inspection of the proposed location has been made. Arrangements are being made to haul water from the Aztec Ditch.

There are no airstrips or camps in the vicinity of the drilling location.

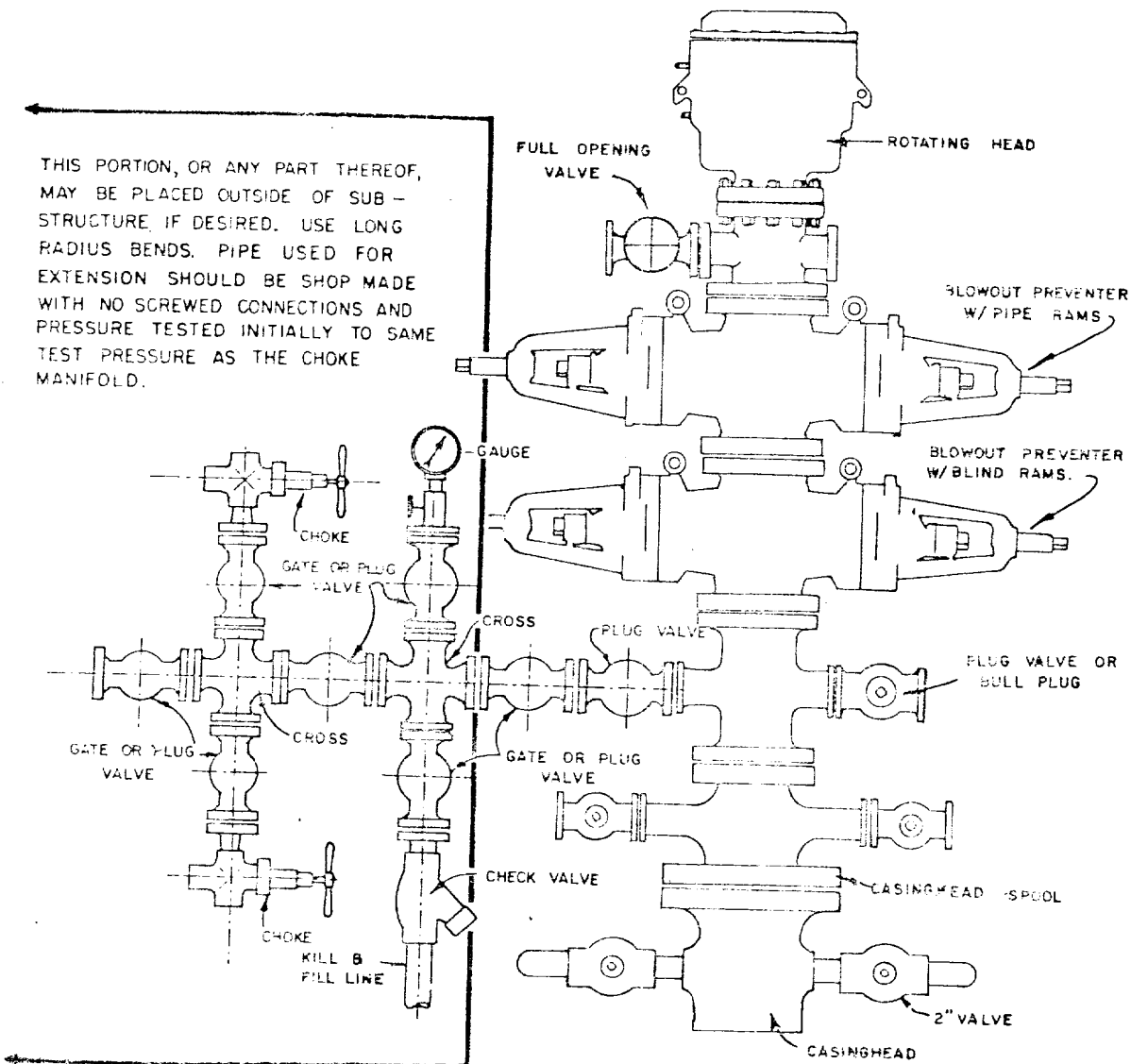
The well will be drilled with rotary tools, and drilling fluids will be a low solid, non-dispersed drilling mud. Upon completion the location will be cleaned, reserve pit filled and leveled with the ground contour. Amoco's standard blowout prevention will be employed; see attached drawing for blowout preventer design.

We believe the development plan drawings will answer any questions which might arise as to the proposed drillsite.

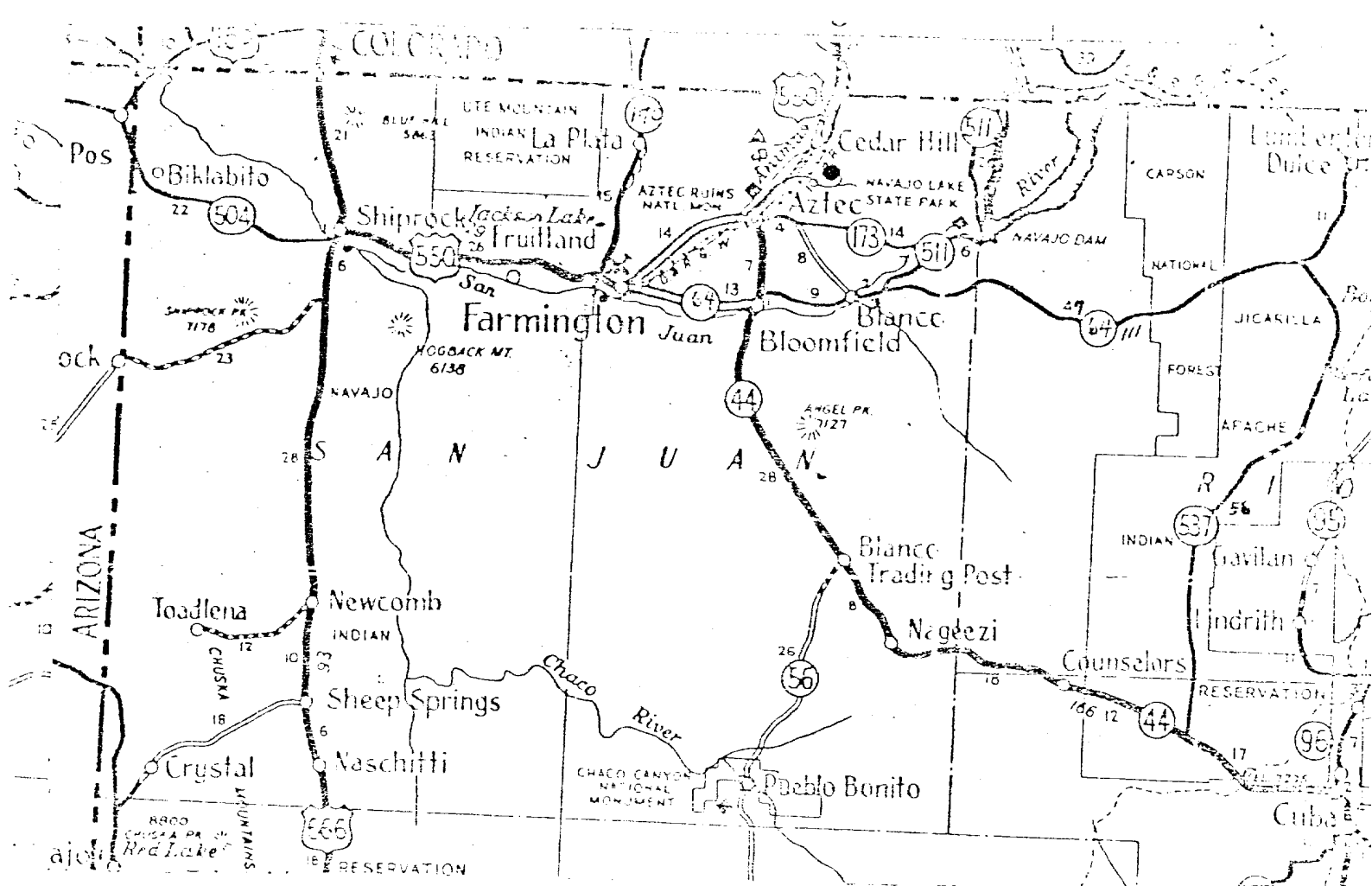


Amoco Production Company	SCALE: None
CANEPLA GAS COM NO. 1A	
SE/4 SE/4 SECTION 18, T31N, R10W, SAN JUAN COUNTY, NEW MEXICO	DRG. NO. MFT-090275

THIS PORTION, OR ANY PART THEREOF, MAY BE PLACED OUTSIDE OF SUB-STRUCTURE, IF DESIRED. USE LONG RADIUS BENDS. PIPE USED FOR EXTENSION SHOULD BE SHOP MADE WITH NO SCREWED CONNECTIONS AND PRESSURE TESTED INITIALLY TO SAME TEST PRESSURE AS THE CHOKE MANIFOLD.



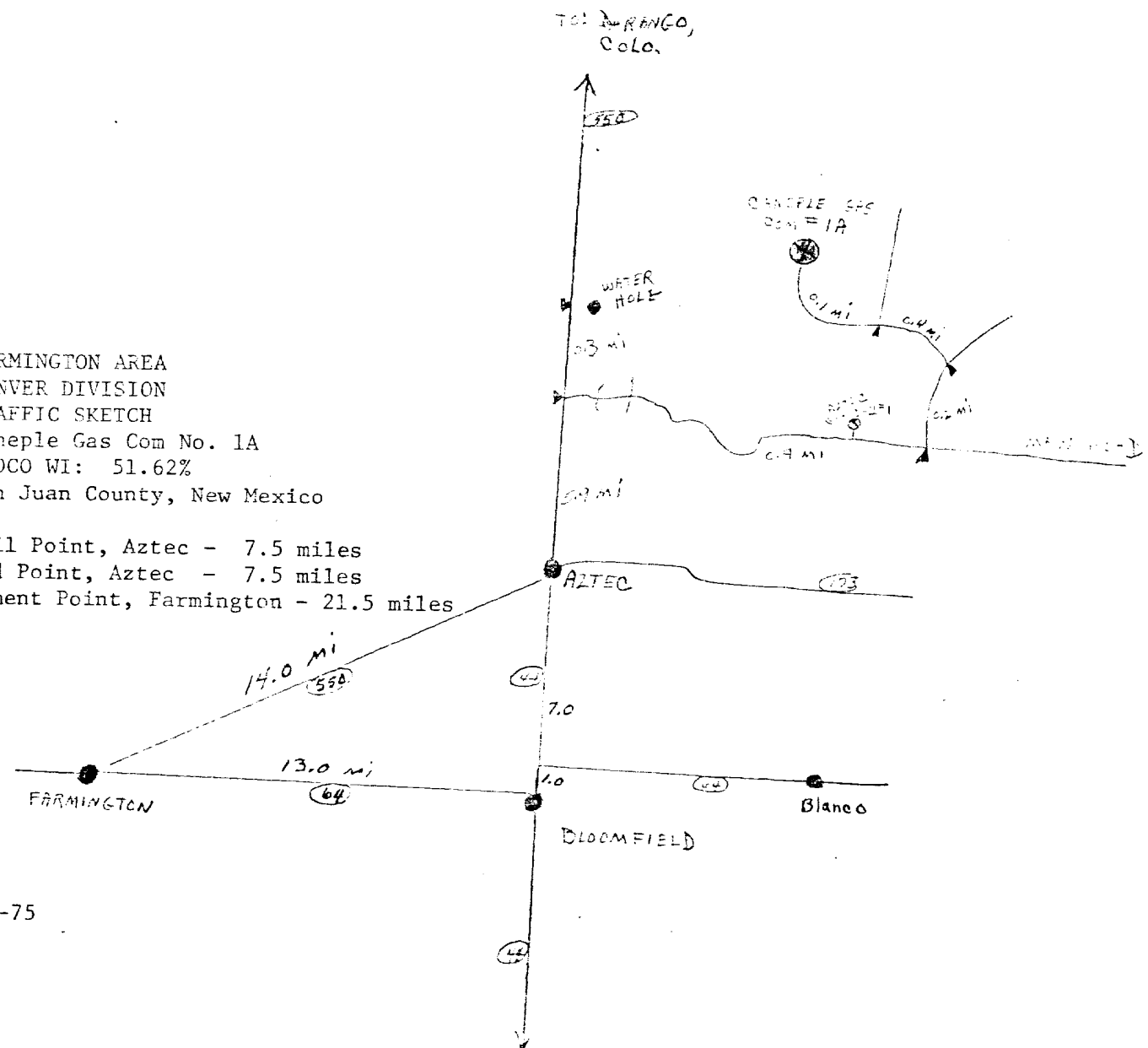
BLOWOUT PREVENTER HOOKUP



1
NORTH

FARMINGTON AREA
DENVER DIVISION
TRAFFIC SKETCH
Canepile Gas Com No. 1A
AMOCO WI: 51.62%
San Juan County, New Mexico

Rail Point, Aztec - 7.5 miles
Mud Point, Aztec - 7.5 miles
Cement Point, Farmington - 21.5 miles



9-3-75

UNITED STATES
DEPARTMENT OF THE INTERIOR
GEOLOGICAL SURVEY

