

UNITED STATES
DEPARTMENT OF THE INTERIOR
GEOLOGICAL SURVEY

30-045-21899

APPLICATION FOR PERMIT TO DRILL, DEEPEN, OR PLUG BACK

1a. TYPE OF WORK
 DRILL DEEPEN PLUG BACK

b. TYPE OF WELL
 OIL WELL GAS WELL OTHER
 SINGLE ZONE MULTIPLE ZONE

2. NAME OF OPERATOR
 Koch Industries Inc.

3. ADDRESS OF OPERATOR
 P.O. Box 2256, Wichita, Kansas 67201

4. LOCATION OF WELL (Report location clearly and in accordance with any State requirements.*)
 At surface 1190' FNL & 1190' FEL SW NE NE
 At proposed prod. zone

14. DISTANCE IN MILES AND DIRECTION FROM NEAREST TOWN OR POST OFFICE*
 Approx. 15 from Bloomfield, N.M.

15. DISTANCE FROM PROPOSED* LOCATION TO NEAREST PROPERTY OR LEASE LINE, FT. (Also to nearest drig. unit line, if any) 1190' FEL

16. NO. OF ACRES IN LEASE 160

17. NO. OF ACRES ASSIGNED TO THIS WELL 161.32

18. DISTANCE FROM PROPOSED LOCATION* TO NEAREST WELL, DRILLING, COMPLETED, OR APPLIED FOR, ON THIS LEASE, FT. Appr. 200'

19. PROPOSED DEPTH 2900'

20. ROTARY OR CABLE TOOL Rotary

21. ELEVATIONS (Show whether DF, RT, GR, etc.) 6078' GR

22. APPROX. DATE WORK WILL START*

23. PROPOSED CASING AND CEMENTING PROGRAM

SIZE OF HOLE	SIZE OF CASING	WEIGHT PER FOOT	SETTING DEPTH	QUANTITY OF CEMENT
8-3/4"	7"	26#	200'	100
6-1/4"	4-1/2"	10.5#	2900'	200

- Set SH 7" LT & C csg tested to 3000# @ 200'. Cement w/ enough to circ. to surface. WOC 24 hours.
- Test csg. to 1000# & drill to appr. 1800' w/native mud. Mud up w/Gel-Benex type mud & drill through Pictured Cliffs. Run approx. 2900' new 4 1/2" 10.5# CW-55 ST & C csg. Use enough cement to cover Ojo.
- 8" LWP Shaeffer double pipe ram BOP's will be used. Check BOP's each tour & blind rams each trip.
- Well head will be LP screw type - will not be used to frac through.
- Mud program - 0-200' Gel Lime Slurry, 200-1800' Water & Benex, 1800-2900' Gel-Spersene Mud.
- Anticipated BHP at TD max of 1000#. No abnormal pressures anticipated.
- Auxillary & BOP equipment on rig as follows: (A) Double ram BOP, (B) Kelly cocks (If required), (C) Rotating drilling head (If required), (D) Kill valve on rig floor.
- Complete well by swabbing csg. dry, perf Pict. Cliffs w/2HPF & frac w/ IN ABOVE SPACE DESCRIBE PROPOSED PROGRAM: If proposal is to deepen or plug back, give data on present productive zone and proposed new productive zone. If proposal is to drill or deepen directionally, give pertinent data on subsurface locations and measured and true vertical depths. Give blowout preventer program, if any.

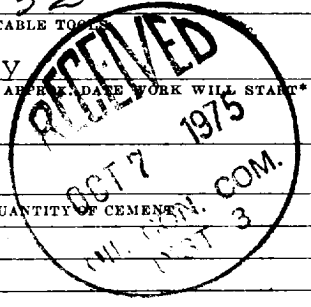
24. SIGNED Orwell L. Schmidt TITLE Operations Manager DATE 9-30-75

(This space for Federal or State office use)

PERMIT NO. _____ APPROVAL DATE _____

APPROVED BY _____ TITLE _____ DATE OCT 6 1975

CONDITIONS OF APPROVAL, IF ANY:
Okal



NEW MEXICO OIL FIELD LOCATION AND WELL ADJUDICATION COMMISSION
WELL LOCATION AND ADJUDICATION REPORT

KOCH EXPLORATION COMPANY

LAMBE

5

A 20 31 NORTH

10 WEST

SAN JUAN

1190

NORTH

1190

EAST

6077.75

PICTURED CLIFFS

~~BLANCO~~ BLANCO EXT 161.32

1. That the well is dedicated to the subject

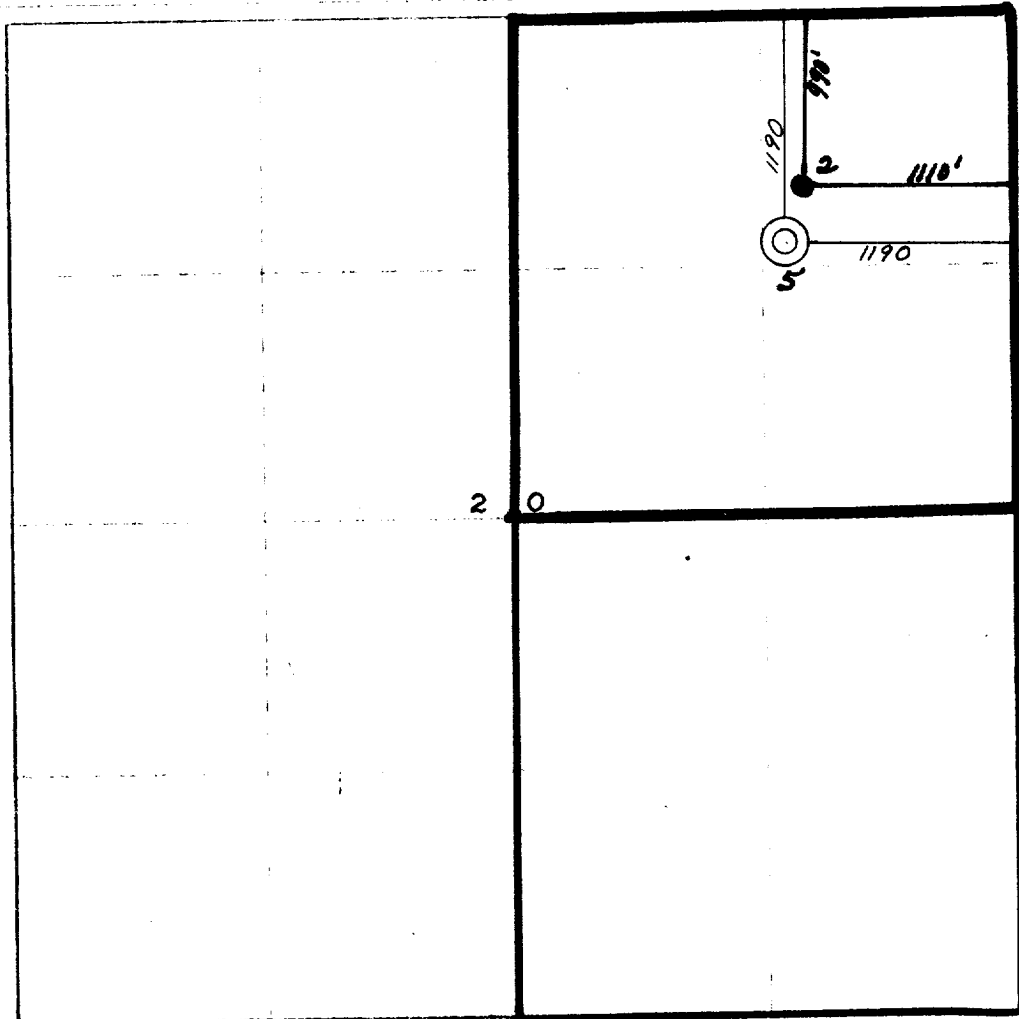
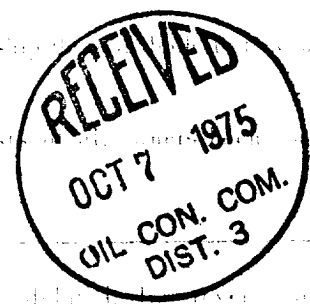
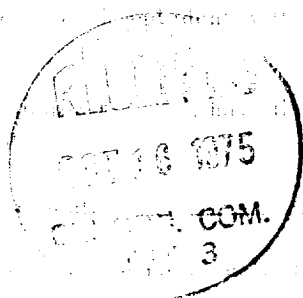
2. That the well is dedicated to the subject

3. That more than one use of different owners

Yes No If answer is "Yes" type

If answer is "No" list the owners and their

All wells which are assigned to the well unit are subject to the same rules of operation, construction, forced-production, etc. throughout until a non-standard well is shown, such interests have been approved by the Commission.



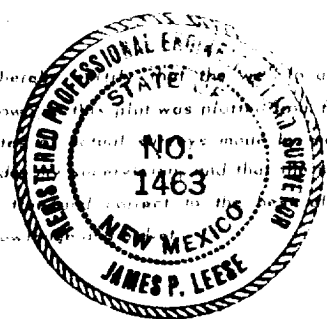
I hereby certify that the information contained herein is true and complete to the best of my knowledge and belief.

Orval L. Schmit

Operations Manger

Koch Industries, Inc.

October 13, 1975



22 September, 1975

James P. Leese