

UNITED STATES
DEPARTMENT OF THE INTERIOR
GEOLOGICAL SURVEY

30-045-21900

APPLICATION FOR PERMIT TO DRILL, DEEPEN, OR PLUG BACK

1a. TYPE OF WORK

DRILL ☒DEEPEN ☐PLUG BACK ☐

b. TYPE OF WELL

OIL
WELL ☐GAS
WELL ☒

OTHER

SINGLE
ZONE ☒MULTIPLE
ZONE ☐

2. NAME OF OPERATOR

Koch Industries Inc.

3. ADDRESS OF OPERATOR

P.O. Box 2256, Wichita, Kansas 67201

4. LOCATION OF WELL (Report location clearly and in accordance with any State requirements.)*

At surface

900' FSL & 1450' FEL NE SW SE

At proposed prod. zone

14. DISTANCE IN MILES AND DIRECTION FROM NEAREST TOWN OR POST OFFICE*

Approx. 15 from Bloomfield, N.M.

15. DISTANCE FROM PROPOSED*

LOCATION TO NEAREST
PROPERTY OR LEASE LINE, FT.
(Also to nearest drlg. unit line, if any)

900' FSL

16. NO. OF ACRES IN LEASE

160

17. NO. OF ACRES ASSIGNED
TO THIS WELL

162.98

18. DISTANCE FROM PROPOSED LOCATION*

TO NEAREST WELL, DRILLING, COMPLETED
OR APPLIED FOR, ON THIS LEASE, FT.

Appr. 200'

19. PROPOSED DEPTH

2900'

20. ROTARY OR CABLE TOOLS

Rotary

21. ELEVATIONS (Show whether DF, RT, GR, etc.)

6097' GR

22. APPROX. DATE FOR WELL START*

23.

PROPOSED CASING AND CEMENTING PROGRAM

SIZE OF HOLE	SIZE OF CASING	WEIGHT PER FOOT	SETTING DEPTH	QUANTITY OF CEMENT
8-3/4"	7"	26#	200'	100
6-1/4"	4-1/2"	10.5#	2900'	200

1. Set SH 7" casing tested to 3000# @ 200'. Cement w/enough to circ. to surface. WOC 24 hours.
2. Test csg. to 1000# & drill to appr. 1800' w/native mud. Mud up w/Gel-Benex type mud & drill through Pictured Cliffs. Run appr. 2900' new 4 1/2" 10.5# CW-55 ST&C csg. Use enough cement to cover Ojo.
3. 8" LWP Shaeffer double pipe ram BOP's will be used. Check BOP 's each tour & blind rams each trip.
4. Well head will be LP screw type - will not be used to frac through.
5. Mud program: 0-200' Gel Lime Slurry, 200-1800' Water & Benex, 1800-2900' Gel-Spersene Mud.
6. Anticipated BHP at TD max. of 1000#. No abnormal pressures anticipated.
7. Auxillary & BOP equipment on rig as follows: (A) Double ram BOP, (B) Kelly cocks (If required), (C) Rotating drilling head (If required), (D) Kill valve on rig floor.

(Over)

IN ABOVE SPACE DESCRIBE PROPOSED PROGRAM: If proposal is to deepen or plug back, give data on present productive zone and proposed new productive zone. If proposal is to drill or deepen directionally, give pertinent data on subsurface locations and measured and true vertical depths. Give blowout preventer program, if any.

24.

SIGNED

Orville L. Schmit

TITLE

Operations Manager

DATE 10-30-75

(This space for Federal or State office use)

PERMIT NO.

APPROVAL DATE

APPROVED BY

TITLE

DATE

CONDITIONS OF APPROVAL, IF ANY:

OK

*See Instructions On Reverse Side

**NEW MEXICO OIL CONSERVATION COMMISSION
WELL LOCATION AND ACREAGE DEDICATION PLAT**

Form C-102
Supersedes C-128
Effective 1-1-65

All distances must be from the outer boundaries of the Section.

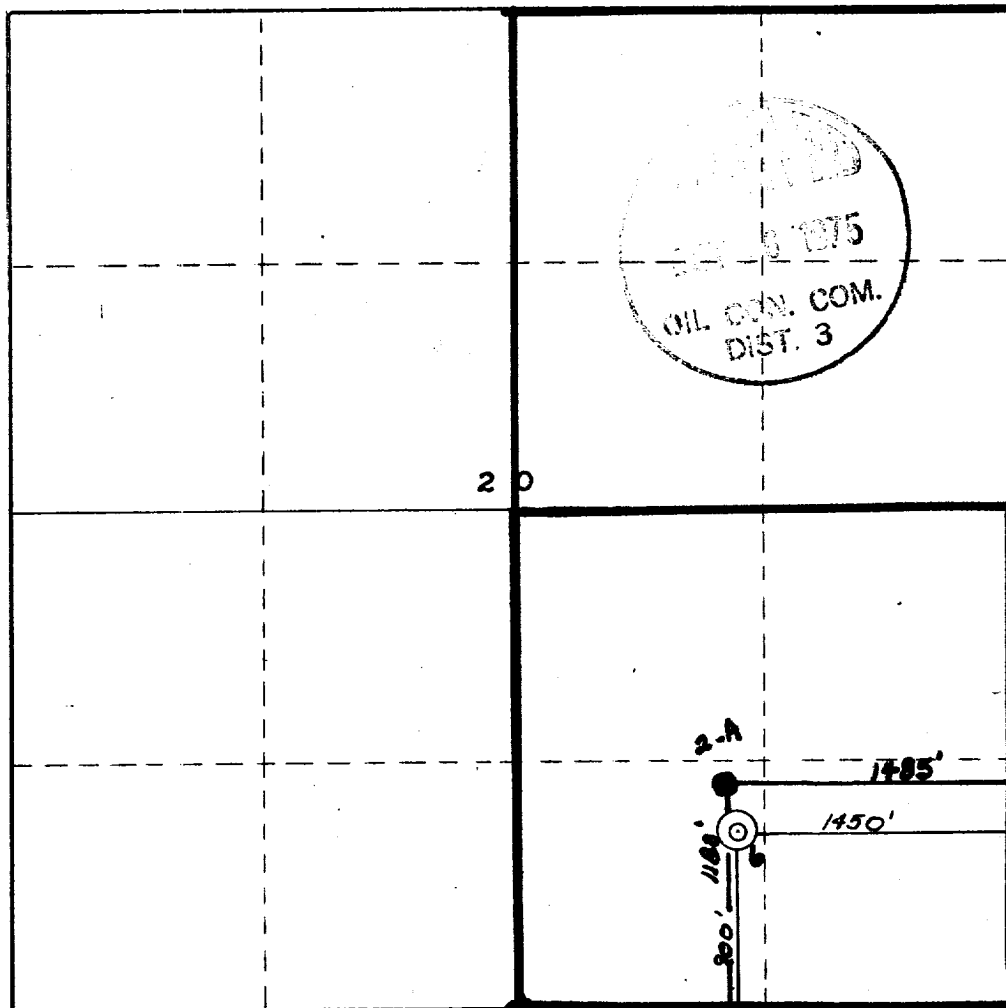
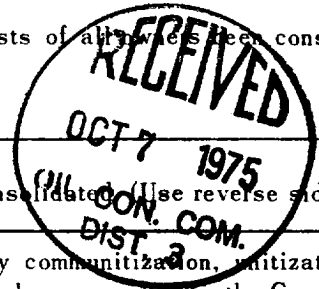
Operator KOCH EXPLORATION COMPANY			Lease LAMBE		Well No. 6
Unit Letter 0	Section 20	Township 31 NORTH	Range 10 WEST	County SAN JUAN	
Actual Footage Location of Well: 900 feet from the SOUTH line and 1450 feet from the EAST line					
Ground Level Elev. 6097.30	Producing Formation PICTURED CLIFFS		Pool BLANCO EXT	Dedicated Acreage: 162.98 Acres	

1. Outline the acreage dedicated to the subject well by colored pencil or hatchure marks on the plat below.
2. If more than one lease is dedicated to the well, outline each and identify the ownership thereof (both as to working interest and royalty).
3. If more than one lease of different ownership is dedicated to the well, have the interests of all leases been consolidated by communitization, unitization, force-pooling, etc?

☐ Yes ☐ No If answer is "yes," type of consolidation _____

If answer is "no," list the owners and tract descriptions which have actually been consolidated (Use reverse side of this form if necessary.) _____

No allowable will be assigned to the well until all interests have been consolidated (by communitization, unitization, forced-pooling, or otherwise) or until a non-standard unit, eliminating such interests, has been approved by the Commission.



CERTIFICATION

I hereby certify that the information contained herein is true and complete to the best of my knowledge and belief.

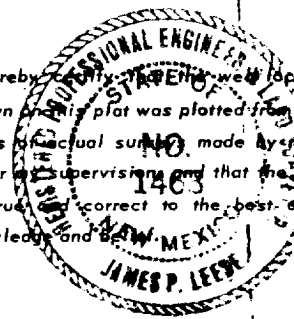
Dennis J. Schmit
Name

Operations Manager
Position

Koch Industries, Inc.
Company

October 13, 1975
Date

I hereby certify that the well location shown on this plat was plotted from field notes of actual survey made by me or under my supervision and that the same is true and correct to the best of my knowledge and belief.



Date Surveyed
22 September, 1975

Registered Professional Engineer and/or Land Surveyor
James P. Leon

Certificate No.
1463