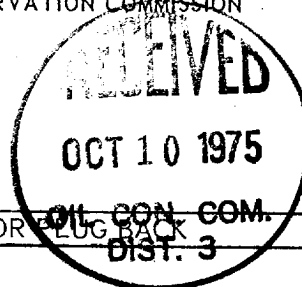


NO. OF COPIES RECEIVED	5
DISTRIBUTION	
SANTA FE	1
FILE	1
U.S.G.S.	2
LAND OFFICE	
OPERATOR	1

NEW MEXICO OIL CONSERVATION COMMISSION



30-045-21905

Form C-101
Revised 1-1-65

5A. Indicate Type of Lease STATE <input type="checkbox"/> FEE <input checked="" type="checkbox"/>	
5. State Oil & Gas Lease No.	
7. Unit Agreement Name San Juan 32-7 Unit	
8. Farm or Lease Name San Juan 32-7 Unit	
9. Well No. 29	
10. Field and Pool, or Wildcat Blanco Mesa Verde	
12. County San Juan	
19. Proposed Depth 6025'	19A. Formation Mesa Verde
20. Rotary or C.T. Rotary	
21. Elevations (Show whether DF, RT, etc.) 6252' GR	21A. Kind & Status Plug. Bond
21B. Drilling Contractor	
22. Approx. Date Work will start - October 30, 1975	

APPLICATION FOR PERMIT TO DRILL, DEEPEN, OR PLUG BACK

1a. Type of Work b. Type of Well OIL WELL <input type="checkbox"/> GAS WELL <input checked="" type="checkbox"/> OTHER <input type="checkbox"/>		DRILL <input checked="" type="checkbox"/> DEEPEN <input type="checkbox"/> PLUG BACK <input type="checkbox"/>	
2. Name of Operator Northwest Pipeline Corporation			
3. Address of Operator P. O. Box 90 Farmington, New Mexico 87401			
4. Location of Well UNIT LETTER A LOCATED 710 FEET FROM THE North LINE AND 620 FEET FROM THE East LINE OF SEC. 18 TWP. 32N RGE. 7W NMPM			
23.			

PROPOSED CASING AND CEMENT PROGRAM

SIZE OF HOLE	SIZE OF CASING	WEIGHT PER FOOT	SETTING DEPTH	SACKS OF CEMENT	EST. TOP
13 3/4"	9 5/8	36	200'	180	circ
8 3/4"	7	20	4015'	160	
6 1/4"	4 1/2 Liner	10.5	6025	215	

Selectively perforate and stimulate the Mesa Verde formation.

A BOP will be installed after the surface casing is set and cemented. All subsequent work will be conducted through the BOP.

The E/2 of section 18 is dedicated to this well.

1-8-76

IN ABOVE SPACE DESCRIBE PROPOSED PROGRAM: IF PROPOSAL IS TO DEEPEN OR PLUG BACK, GIVE DATA ON PRESENT PRODUCTIVE ZONE AND PROPOSED NEW PRODUCTIVE ZONE. GIVE BLOWOUT PREVENTER PROGRAM, IF ANY.

I hereby certify that the information above is true and complete to the best of my knowledge and belief.

Signed D. H. Maroncelli Title Petroleum Engineer Date October 8, 1975
(This space for State Use)

APPROVED BY AK Sundrick TITLE SUPERVISOR DIST. 42 DATE OCT 10 1975
CONDITIONS OF APPROVAL, IF ANY:

Subject to approval of non-standard location

NEW MEXICO OIL CONSERVATION COMMISSION
WELL LOCATION AND ACREAGE DEDICATION PLAT

Form C-102
Supersedes C-128
Effective 1-1-65

All distances must be from the outer boundaries of the Section.

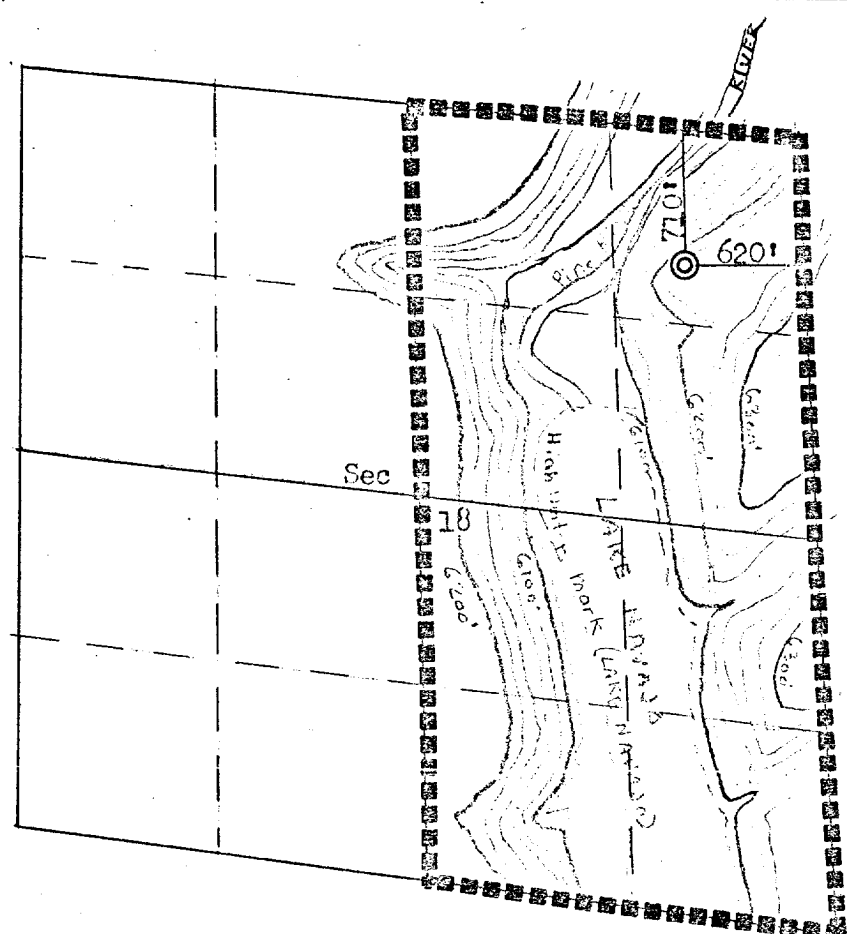
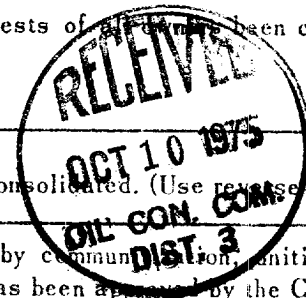
Operator Northwest Pipeline Corporation			Lease San Juan 32-7 Unit		Well No. 29
Unit Letter A	Section 18	Township 32N	Range 7W	County San Juan	
Actual Footage Location of Well: 710 feet from the North line and 620 feet from the East line					
Ground Level Elev: 6252	Producing Formation Mesa Verde		Pool Blanco Mesa Verde		Dedicated Acreage: 320 Acres

1. Outline the acreage dedicated to the subject well by colored pencil or hachure marks on the plat below.
2. If more than one lease is dedicated to the well, outline each and identify the ownership thereof (both as to working interest and royalty).
3. If more than one lease of different ownership is dedicated to the well, have the interests of all leases been consolidated by communitization, unitization, force-pooling, etc?

☐ Yes ☐ No If answer is "yes," type of consolidation _____

If answer is "no," list the owners and tract descriptions which have actually been consolidated. (Use reverse side of this form if necessary.) _____

No allowable will be assigned to the well until all interests have been consolidated (by communitization, unitization, forced-pooling, or otherwise) or until a non-standard unit, eliminating such interests, has been approved by the Commission.



Scale: 1"=1320'

CERTIFICATION

I hereby certify that the information contained herein is true and complete to the best of my knowledge and belief.

D. H. Maroncelli

Name

D. H. Maroncelli

Position

Petroleum Engineer

Company

Northwest Pipeline Corp.

Date

October 7, 1975

I hereby certify that the well location shown on this plat was plotted from field notes of actual surveys made by me or under my supervision, and that the same is true and correct to the best of my knowledge and belief.

Date Surveyed

August 9, 1975

Registered Professional Engineer and/or Land Surveyor

Fred B. Ferrer Jr.

Fred B. Ferrer Jr.

Certificate No.

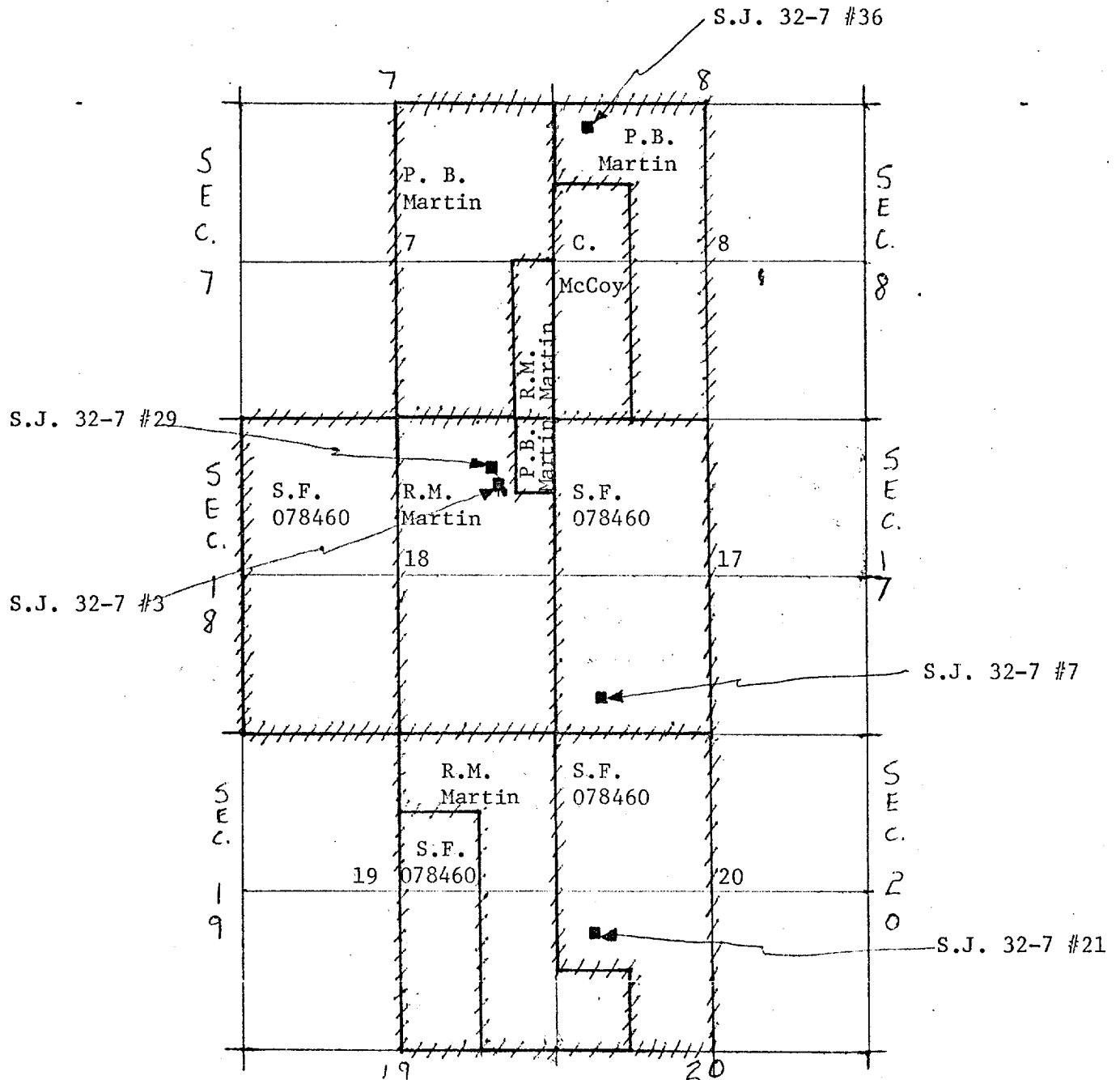
3950

Northwest Pipeline Corporation



PRODUCTION & DRILLING
P. O. BOX 90
FARMINGTON, NEW MEXICO 87401

LEASE HOLDERS PLAT



SCALE 1" = 1320'

