

NEW MEXICO OIL CONSERVATION COMMISSION
WELL LOCATION AND ACREAGE DEDICATION PLAT

Form O-1-1
Supersedes O-1
Effective 1-1-65

All distances must be from the outer boundaries of the Section

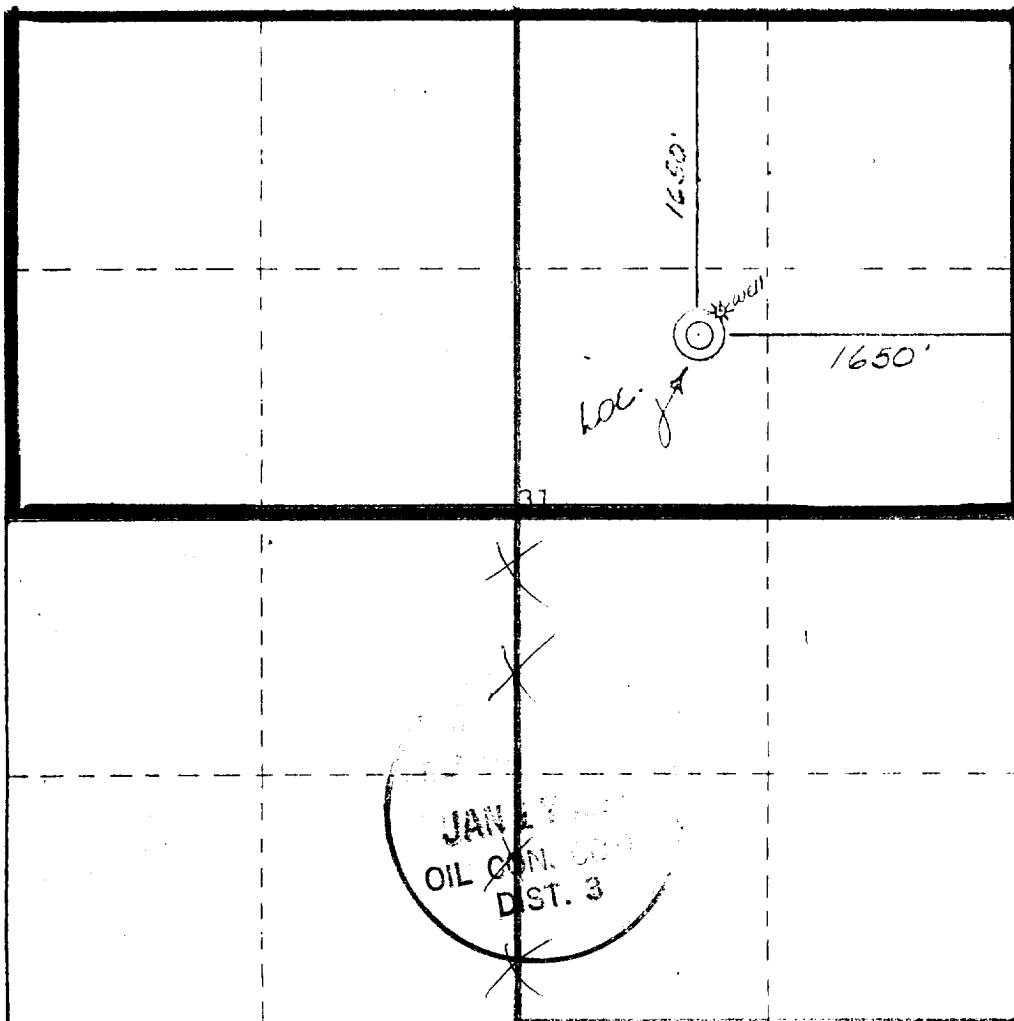
Operator KOCH EXPLORATION COMPANY		Lease GARDNER		Well No. 2
Unit Number 1650	Section 31	Township 32 NORTH	Range 8 WEST	County SAN JUAN COUNTY
Actual Point Location of Well: 1650 feet from the NORTH line and 1650 feet from the EAST line.				
Ground Level Elev. 6510	Producing Formation Mesaverde	Pool Blanco	Dedicated Acreage N/271.25 Acres	

- Outline the acreage dedicated to the subject well by colored pencil or hatchure marks on the plat below.
- If more than one lease is dedicated to the well, outline each and identify the ownership thereof (both as to working interest and royalty).
- If more than one lease of different ownership is dedicated to the well, have the interests of all owners been consolidated by communitization, unitization, force-pooling, etc?

☐ Yes ☐ No If answer is "yes," type of consolidation _____

If answer is "no," list the owners and tract descriptions which have actually been consolidated. (Use reverse side of this form if necessary.) _____

No allowable will be assigned to the well until all interests have been consolidated (by communitization, unitization, forced-pooling, or otherwise) or until a non-standard unit, eliminating such interests, has been approved by the Commission.



CERTIFICATION

I hereby certify that the information contained herein is true and complete to the best of my knowledge and belief.

Dwight L. Schmitt
Name

Operations Manager

Position

Koch Industries, Inc.

Company

March 1, 1976

Date

I hereby certify that the well shown on this plat was plotted from notes of actual surveys made by me or under my supervision and that the same is true and correct to the best of my knowledge and belief.

6 February 1976

James P. Lease

James P. Lease

Certificate No.

1463

0 330 660 990 1320 1650 1980 2310 2640 2970 3300 0