

NORTHWEST PIPELINE CORPORATION

MULTI-POINT SURFACE USE PLAN

for the Cox Canyon Unit

Well Number Com #23

1. Existing Roads: See attached topographic map. All existing roads used, shall be maintained in a serviceable condition at all times during the drilling operation.
2. Planned Access Roads: See attached topographic map. Maximum grade is approximately 1%. The road surface will not exceed twenty feet in width. Upon completion of drilling operations, the access road will be adequately drained to control runoff and soil erosion. Drainage facilities may include ditches, water bars, culverts or any other measure deemed necessary. All activities will be confined to the access road and drill pad.
3. Location of Existing Wells: See attached topographic map.
4. Location of Tank Batteries; Production Facilities; and Production, Gathering and Service lines: See attached topographic map for locations of existing and proposed gas gathering lines.
5. Location and Type of Water Supply: Water needed for the drilling operation will be hauled from the Decker Spring Water Hole located in the NW/4 29, T32N, R10W.
6. Source of Construction Materials: No additional materials will be needed.
7. Methods for Handling Waste Disposal: All garbage, debris, and trash will be buried at least three feet deep. A portable toilet will be supplied for human waste. After drilling operations have been completed, the reserve pit will be fenced and the liquid portion will be allowed to evaporate before the location is cleaned up and leveled. The earthen pits will not be located on natural drainages and will be constructed in such a manner so that they will not leak. Any evaporator pit containing toxic liquids will be fenced.
8. Ancillary Facilities: There will be no camps or airstrips associated with the drilling of this well.
9. Well Site Layout: See attached location layout sheet. There will be a drainage ditch above the cut slope.
10. Plans for Restoration of the Surface: Upon completion of drilling, the location will be cleaned and leveled so that no cut or fill banks will be steeper than 3:1.

All of the area disturbed in connection with the drill site will be seeded as close as possible for any above ground equipment while still allowing for access to the equipment. Seeding will be done within one year after drilling is completed and during the period from July 1 through September 15. Seeding will be done with seed Mixture #2.

All equipment above ground will be painted a non-glare, non-reflective, non-chalking color that simulates the natural color of the site. For this well code number 595-34127, Green.

11. Other Information: If, during operations, any historic or prehistoric ruin, monument or site, or any object of antiquity is discovered, then work will be suspended and the discovery will be reported to the District Manager of the BLM.

When drilling with gas, the line used to discharge and burn off the gas will be located so as not to damage vegetation in the area, and if necessary an earthen screen will be constructed to protect the vegetation. All liquids from the line will be contained at the site unless otherwise specified by the surface agency's representative.

The area covered by the location and proposed access road is gently sloped with scattered brush and some grasses.

12. Operator's Representative: D.H. Maroncelli, P.O. Box 90, Farmington, N.M. 87401.  
Phone: 327-5351 Extension 54.
13. Certification:

I hereby certify that I have inspected the proposed drillsite and access route; that I am familiar with the conditions which presently exist; that the statements made in this plan are, to the best of my knowledge true and correct; and, that the work associated with the operations proposed herein will be performed by Northwest Pipeline Corporation and its contractors and subcontractors in conformity with this plan and the terms and conditions under which it is approved.

4-27-77  
Date

D.H. Maroncelli  
D.H. Maroncelli

OPERATIONS PLAN

Cox Canyon Unit Com #23

4/4/77

I. LOCATION: NE/4 NW/4 Sec. 17, T32N, R11W

LEASE NUMBER: NM 03190

FIELD: Blanco Pictured Cliffs

ELEVATION: 6654 GR

II. GEOLOGY:

A. Formation Tops:

Ojo Alamo:	2081'	Total Depth:	3411'
Kirtland:	2204'		
Fruitland:	2824'		
Pictured Cliffs:	3291'		

B. Logging Program: I-ES and Density at T.D.

C. Coring Program: None

D. Testing Program: None

III. DRILLING:

A. Anticipated starting date and duration of activities:

B. BOP: Blind rams and pipe rams, 10', 900 series, double gate, rated at 3000 PSI.

C. Mud Program:

a) Spud Mud: Water, lime and gel.

b) Surface to 3230

Starloss: CMC mud

Viscosity 25-30 sec/qt.

Weight: 8.9-9.0 #/gal.

Water Loss: 7-12 CC.

Ph: 8.5-9.5

c) From 3230 to 3411

Starloss: CMC Hy-gel mud

Viscosity: 38-50 sec/qt.

Weight: 9.0-9.5 #/gal.

Water Loss: 6-8 CC.

Ph: 8.5-9.5

IV. MATERIALS:

A. Casing Program:

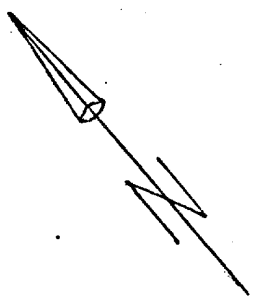
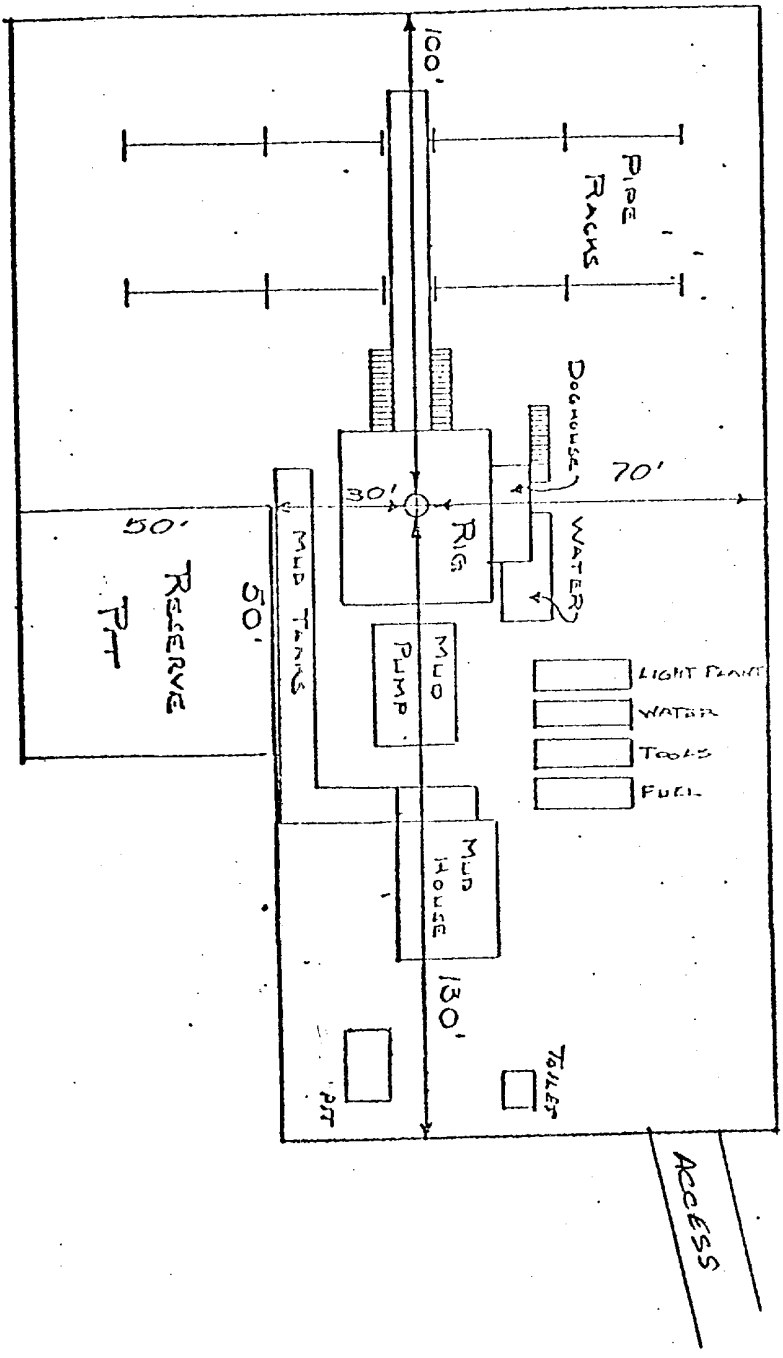
<u>Hole Size</u>	<u>Depth O.H.</u>	<u>Casing Size</u>	<u>Wt. &amp; Grade</u>	<u>Depth Set</u>
12 1/4"	120'	8 5/8"	24# K-55	120'
6 3/4"	3411'	2 7/8"	6.4# K-55	3411'

V. CEMENTING:

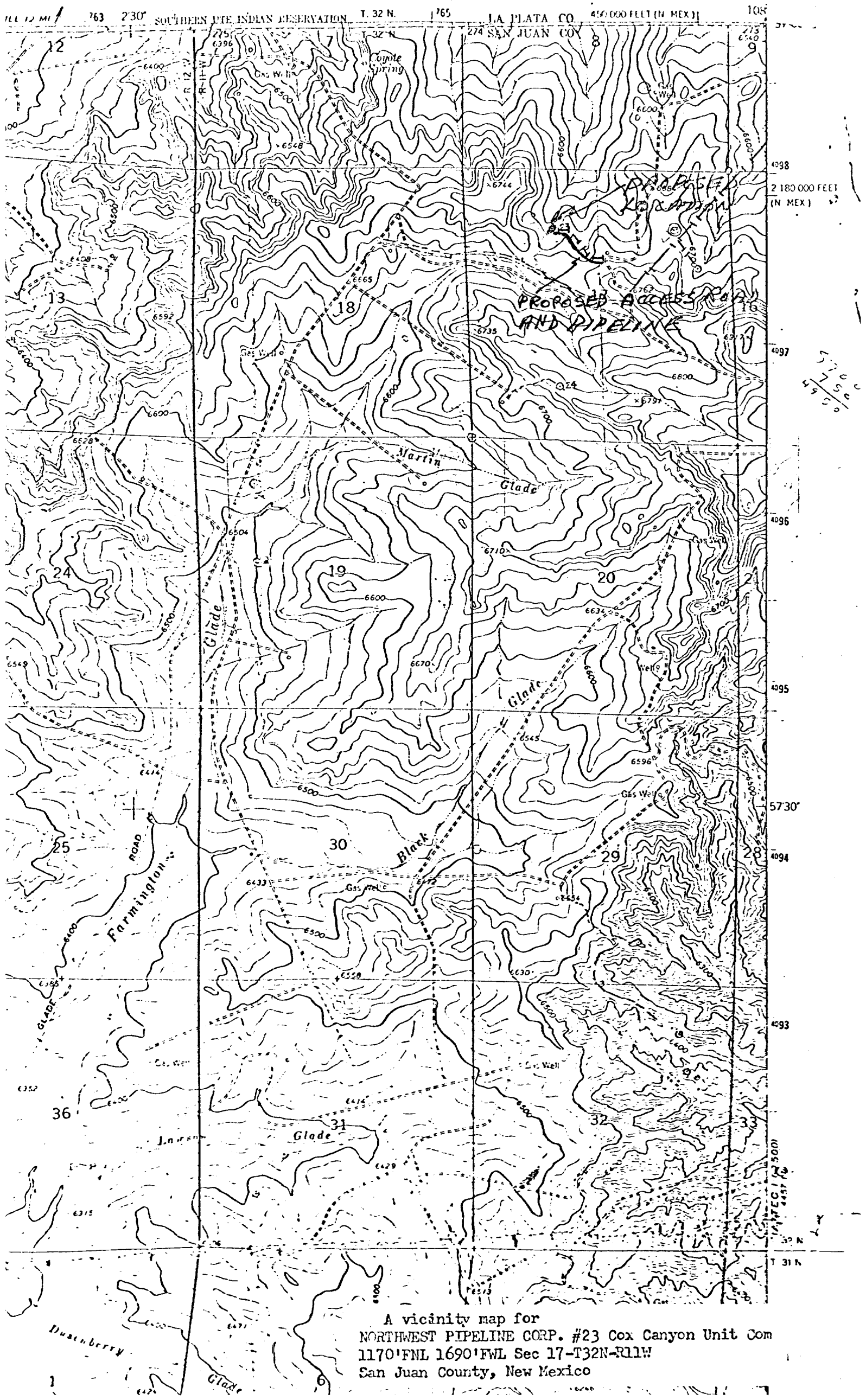
- A. Surface Casing 8 5/8" - Use 85 sks. Cl. "B" cmt. w/1/4# Flocele/sk. & 3% calcium chloride (100% excess to circ.) WOC 12 hrs. Test surface csg. to 600 PSI for 30 min.
- B. Production Casing 2 7/8"- Use 175 sks. 65/35 poz w/10% gel & 1/4 cu. ft. fine Gilsonite/cu. ft. slurry & tail in/50 sks. Cl. "B" cmt. Run temp. survey after 12 hrs.

ks

NORTHWEST PIPELINE CORPORATION  
 LOCATION LAYOUT  
 Cox Canyon Unit Com. #23



DATE: 4-27-77  
 SCALE: 1" = 20'



A vicinity map for  
NORTHWEST PIPELINE CORP. #23 Cox Canyon Unit Com  
1170'FNL 1690'FWL Sec 17-T32N-R11W  
San Juan County, New Mexico