

④



STATE OF NEW MEXICO
ENERGY, MINERALS AND NATURAL RESOURCES DEPARTMENT
OIL CONSERVATION DIVISION

well file

GARREY CARRUTHERS
GOVERNOR

POST OFFICE BOX 2088
STATE LAND OFFICE BUILDING
SANTA FE, NEW MEXICO 87504
(505) 827-5800

April 16, 1990

Southland Royalty Co.
c/o Meridian Oil, Inc.
P.O. Box 4289
Farmington, NM 87499-4289

RECEIVED
APR 18 1990
OIL CON. DIV.
DIST. 3

Attention: Peggy Bradfield

*RE: Administrative Application for an Unorthodox Coal Gas
Well Location, Davis Well No. 19, 1840' FNL - 1110'
FWL (Unit E) 1-T31N-R12W, Basin-Fruitland Coal Gas
Pool, San Juan County, New Mexico.*

Dear Ms. Bradfield:

In reviewing the subject application, our files indicate that there is currently an outstanding APD for your Davis Well No. 500, to test the Basin-Fruitland Coal Gas Pool within the W/2 (320-acre) proration unit, said well to be drilled at a standard coal gas well location 1835 feet from the South line and 1165 feet from the West line (Unit L) of said Section 1, see attached. What are Southland's plans for the No. 500 well at this time?

Sincerely,

Michael E. Stogner
Chief Hearing Officer/Engineer

MES/ag

cc: Oil Conservation Division - Aztec
US Bureau of Land Management - Farmington

UNITED STATES
DEPARTMENT OF THE INTERIOR
BUREAU OF LAND MANAGEMENT

RECEIVED
DIVISION

SUNDY NOTICES AND REPORTS ON WELLS 30 APR 6 AM 9 04

1. TYPE OF WELL GAS		5. LEASE NUMBER SF-077648	
2. OPERATOR SOUTHLAND ROYALTY CO.		6. IF INDIAN, ALL. OR TRIBE NAME	
3. ADDRESS & PHONE NO. OF OPERATOR P O BOX 4289 FARMINGTON, NM 87499		7. UNIT AGREEMENT NAME	
4. LOCATION OF WELL 1835'S 1165'W		8. FARM OR LEASE NAME DAVIS	
		9. WELL NO. 500	
		10. FIELD, POOL, OR WILDCAT BASIN FRUITLAND COAL	
		11. SEC. T. R. M OR BLK. SEC. 1 T31N R12W NMPM	
14. PERMIT NO.	15. ELEVATIONS 6370'GL	12. COUNTY SAN JUAN	13. STATE NM
16. NOTICE OF INTENTION TO: Change Plans			
17. Describe proposed or completed operations			

Attached is a revised operations plan, BOPE diagram and anticipated production facilities diagram on the subject well.

RECEIVED
APR 03 1990
OIL CON. DIV.
DIST. 3

18. AUTHORIZED BY: JO F. [Signature]
REGULATORY AFFAIRS

9/9/89
DATE

NOTE: THIS FORMAT IS ISSUED IN LIEU OF US BLM FORM 3160-5.

=====

(This space for Federal or State office use)

APPROVED BY _____ TITLE _____
CONDITION OF APPROVAL, IF ANY:

NMOCD

APPROVED

MAR 30 1990
Ken Townsend
DATE
FOR AREA
FARMINGTON RESOLVE AREA

Well Name: 500 DAVIS 1835'S 1165'W
 Sec. 1 T31N R12W SAN JUAN NEW MEXICO
 BASIN FRUITLAND COAL Elevation 6370'GL

Formation tops: Surface- NACIMIENTO

Ojo Alamo- 1086
 Kirtland- 1108
 Kirtland- 2521
 Fruitland Coal Top- 2741
 Fruitland Coal Base- 2925
 Total Depth- 2927
 Pictured Cliffs- 2943

Logging Program: Mud logs from 2521 to total depth.

Mud Program:	Interval	Type	Weight	Visc.	F.L. Loss
	0 - 200	Spud	8.4 - 8.9	40-50	no control
	200 - 2927	Non-dispersed	8.4 - 9.5	30-60	no control

Casing Program:	Hole Size	Depth	Interval	Csg. Size	Weight	Grade
	12 1/4"	0 - 200		8 5/8"	24.0#	K-40
	7 7/8"	0 - 2927		5 1/2"	15.5#	K-55
		0 - 2927		2 3/8"	4.7#	J-55

Tubing Program:

Float Equipment: 8 5/8" surface casing - saw tooth guide shoe.

5 1/2" production casing - float shoe on bottom.

Three centralizers run every other joint above shoe.

Wellhead Equipment: 8 5/8" x 5 1/2" x 2 3/8" x 11" 3000 psi xmas tree assembly.

Cementing:
 8 5/8" surface casing - cement with 140 sacks of class "B" cement with 1/4# flocculate/sack and 3% calcium chloride (165 cu ft. of slurry, 100% excess to circulate to surface). WOC 12 hours. Test casing to 600 psi for 30 minutes.

5 1/2" production casing - lead with 269 sacks of 65/35 class "B" poz with 6% gel, 2% calcium chloride and 1/2 cu.ft. perlite/sack (10.3 gallons of water/sack) tail with 100 sacks of class "B" with 2% calcium chloride. 638 cu ft. of slurry, 100% excess to cover the Ojo Alamo. Run temperature survey at 8 hours. WOC 12 hours. Test casing to 1500 psi for 30 minutes.

BOP and Tests:

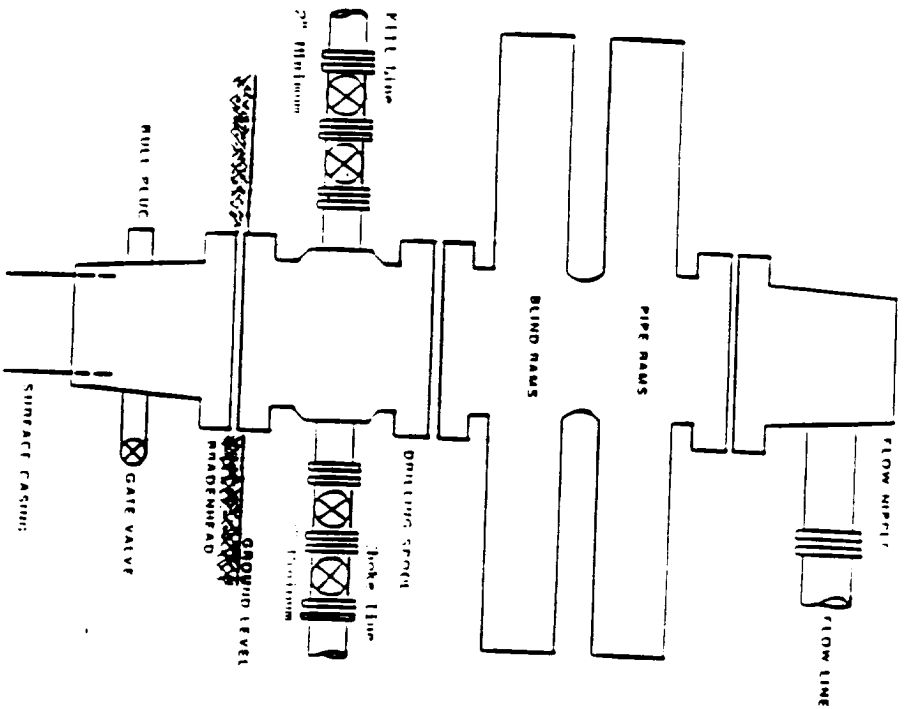
Surface to TD - 11" 2000 psi (minimum) double gate BOP stack
From surface to TD - choke manifold (Reference Figure #3).

Pipe rams will be actuated at least once each day and blind rams actuated once each trip to test proper functioning. A kelly cock valve and drill string safety valves to fit each drill string will be maintained and available on the rig floor.

Addition Information:

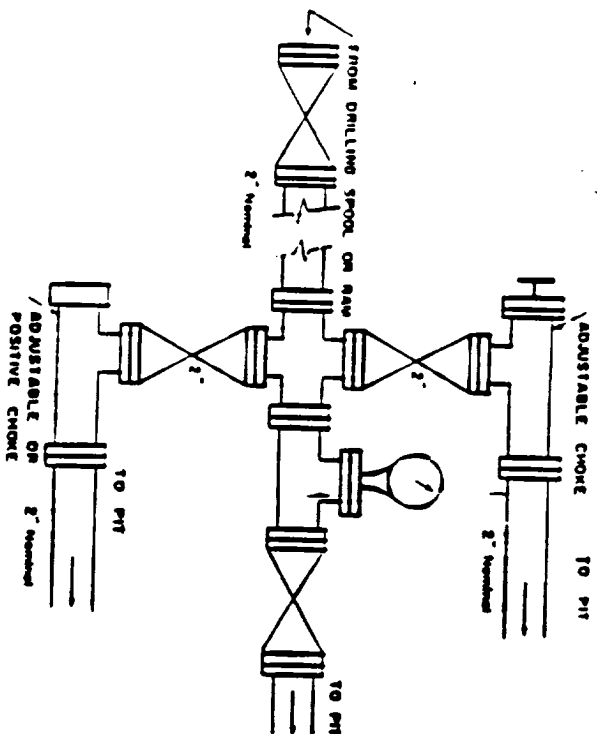
The Frutland coal formation will be completed.
This gas is dedicated.
The W/2 of Section 1 is dedicated to this well.

FIGURE A1



Minimum PIPE Installation for a typical Fruitland Coal well from surface to Total Depth, 11", 2000 psi working pressure double gate NOT equipped with blind and pipe rams.

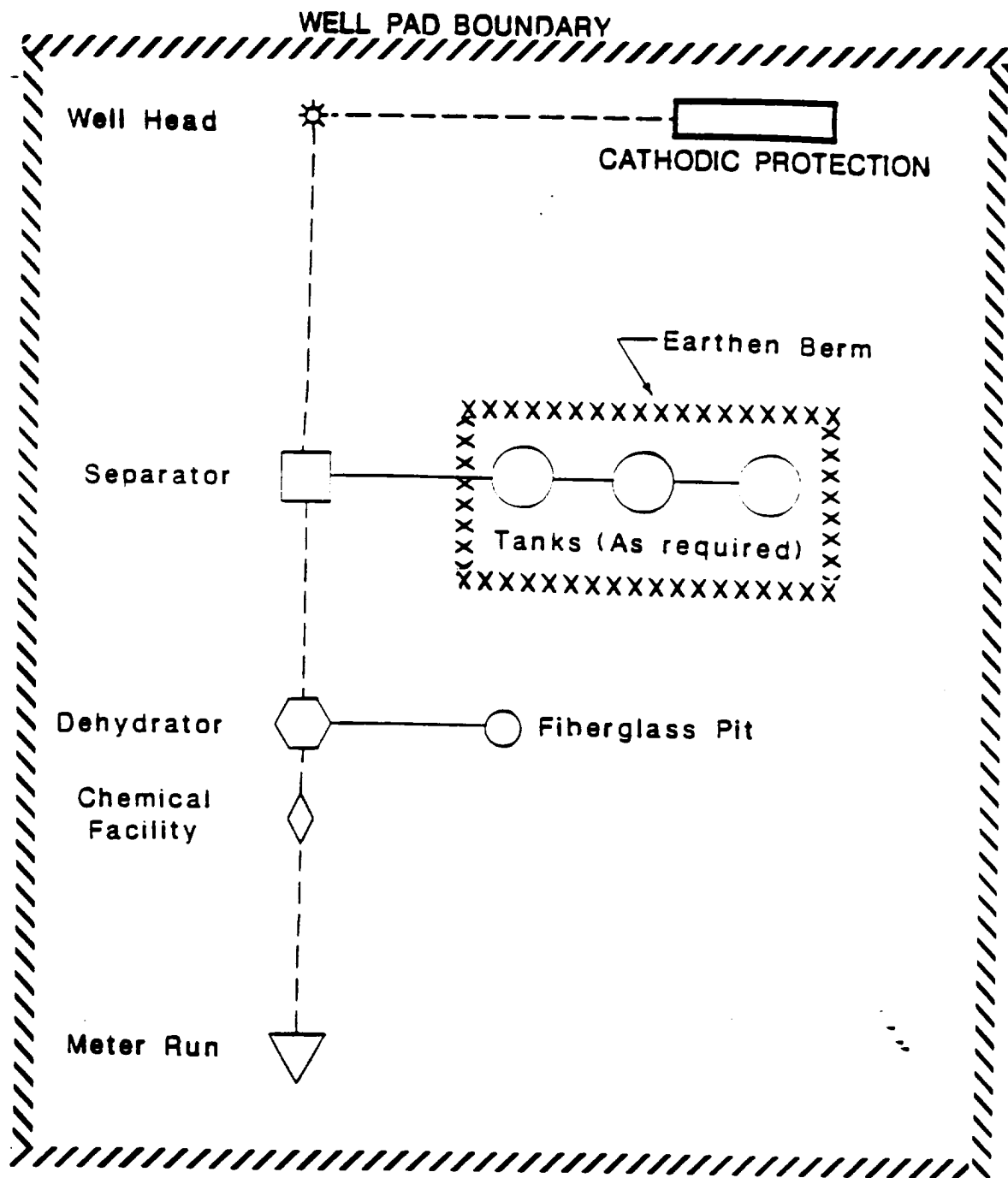
FIGURE A3



Minimum choke manifold configuration for a typical Fruitland Coal well from surface to TD, 2", 2000 psi working pressure equipment with two chokes.

LONG STRING FCW BORE

UP04240 9/8/77



MERIDIAN OIL

ANTICIPATED
PRODUCTION FACILITIES
FOR A
FRUITLAND WELL

J. Falconi

4/28/89

UNITED STATES
DEPARTMENT OF THE INTERIOR
BUREAU OF LAND MANAGEMENT

APPLICATION FOR PERMIT TO DRILL, DEEPEN, OR PLUG BACK

1a. TYPE OF WORK
DRILL

1b. TYPE OF WELL
GAS

2. OPERATOR
SOUTHLAND ROYALTY CO. OIL CONSERVATION DIV. SANTA FE

3. ADDRESS & PHONE NO. OF OPERATOR
P O BOX 4289
FARMINGTON, NM 87499

4. LOCATION OF WELL
1835'S 1165'W

5. LEASE NUMBER
SF-077648

6. IF INDIAN, ALL. OR TRIBE NAME

7. UNIT AGREEMENT NAME

8. FARM OR LEASE NAME
DAVIS

9. WELL NO.
500

10. FIELD, POOL, OR WILDCAT
BASIN FRUITLAND COAL

11. SEC. T. R. M OR BLK.
L SEC. 1 T31N R12W NMPM

12. COUNTY
SAN JUAN

13. STATE
NM

14. DISTANCE IN MILES FROM NEAREST TOWN
11 MILES FROM AZTEC

15. DISTANCE FROM
PROPOSED LOCATION 1165'
TO NEAREST PROPERTY
OR LEASE LINE.

16. ACRES IN LEASE
2198.38

17. ACRES ASSIGNED TO WELL
310.79

18. DISTANCE FROM
PROPOSED LOCATION
TO NEAREST WELL DR. 700'
COMPL., OR APPLIED
FOR ON THIS LEASE.

19. PROPOSED DEPTH
2927'

20. ROTARY OR CABLE TOOLS
ROTARY

21. ELEVATIONS (DF, FT, GR, ETC.)
6370'GL

22. APPROX. DATE WORK WILL START

23. PROPOSED CASING AND CEMENTING PROGRAM

*SEE OPERATIONS PLAN

DRILLING OPERATIONS NOT PERMITTED ARE
SUBJECT TO COMPLIANCE WITH ATTACHED
"GENERAL REQUIREMENTS".

24. AUTHORIZED BY: *[Signature]*
REGULATORY AFFAIRS

4-7-89
DATE

PERMIT NO. _____ APPROVAL DATE _____
APPROVED BY _____ TITLE _____ DATE APR 18 1989

NOTE: THIS FORMAT IS ISSUED IN LIEU OF US BLM FORM 3160-3 AREA MANAGER

NNC20

OPERATIONS PLAN

DATE: APR 7, 1989

Well Name: 500 DAVIS
 Sec. 1 T31N R12W
 BASIN FRUITLAND COAL

1835'S 1165'W
 SAN JUAN NEW MEXICO
 Elevation 6370'GL

Formation tops: Surface- NACIMIENTO
 Ojo Alamo- 1086
 Kirtland- 1108
 Fruitland- 2521
 Fruitland Coal Top- 2741
 Fruitland Coal Base- 2925
 Intermediate TD- 2721
 Total Depth- 2927
 Pictured Cliffs- 2943

Logging Program: Mud logs from intermediate to total depth.

Mud Program: Low solid non-dispersed mud from surface to total depth.

Casing Program:	Hole Size	Depth Interval	Csg. Size	Weight	Grade
	12 1/4"	0 - 200	9 5/8"	32.3#	H-40
	8 3/4"	0 - 2721	7"	20.0#	K-55
	6 1/4"	2671 - 2927	5 1/2"	15.5#	K-55
Tubing Program:		0 - 2927	2 7/8"	6.5#	J-55

Float Equipment: 9 5/8" surface casing - saw tooth guide shoe.

7" intermediate casing - guide shoe and self-fill insert float valve.
 Three centralizers run every other joint above shoe. Run insert float
 one joint above the guide shoe.

5 1/2" production liner - float shoe on bottom and a pre-drilled liner
 run to the 7" casing with a minimum 50' overlap. Liner hanger is a
 double slip grip type.

Wellhead Equipment: 9 5/8" x 7" x 2 7/8" x 11" 3000 psi xmas tree assembly.

Cementing:

9 5/8" surface casing - cement with 106 sacks of class "B" cement with 1/4#
 flocele/sack and 3% calcium chloride (125 cu ft. of slurry, 100%
 excess to circulate to surface). WOC 12 hours. Test casing to 600
 psi for 30 minutes.

7" intermediate casing - lead with 194 sacks of 65/35 class "B" poz with 6%
 gel, 2% calcium chloride and 1/2 cu.ft. Perlite/sack (10.3 gallons of
 water/sack) tail with 100 sacks of class "B" with 2% calcium chloride.
 491 cu ft. of slurry, 100% excess to cover the Ojo Alamo. Run
 temperature survey at 8 hours. WOC 12 hours. Test casing to 1500 psi
 for 30 minutes.

5 1/2" liner - do not cement.

The Fruitland coal formation will be completed.

A 3000 psi WP and 6000 psi test double gate preventer equipped with
 blind and pipe rams will be used for blow out prevention on this well.
 This gas is dedicated.

The W/2 of Section 1 is dedicated to this well.

Submit to Appropriate
District Office
State Lease - 4 copies
Fee Lease - 3 copies

State of New Mexico
Energy, Minerals and Natural Resources Department

Form C-102
Revised 1-1-89

OIL CONSERVATION DIVISION

P.O. Box 2088
Santa Fe, New Mexico 87504-2088

DISTRICT I
P.O. Box 1980, Hobbs, NM 88240

DISTRICT II
P.O. Drawer 00, Aztec, NM 88210

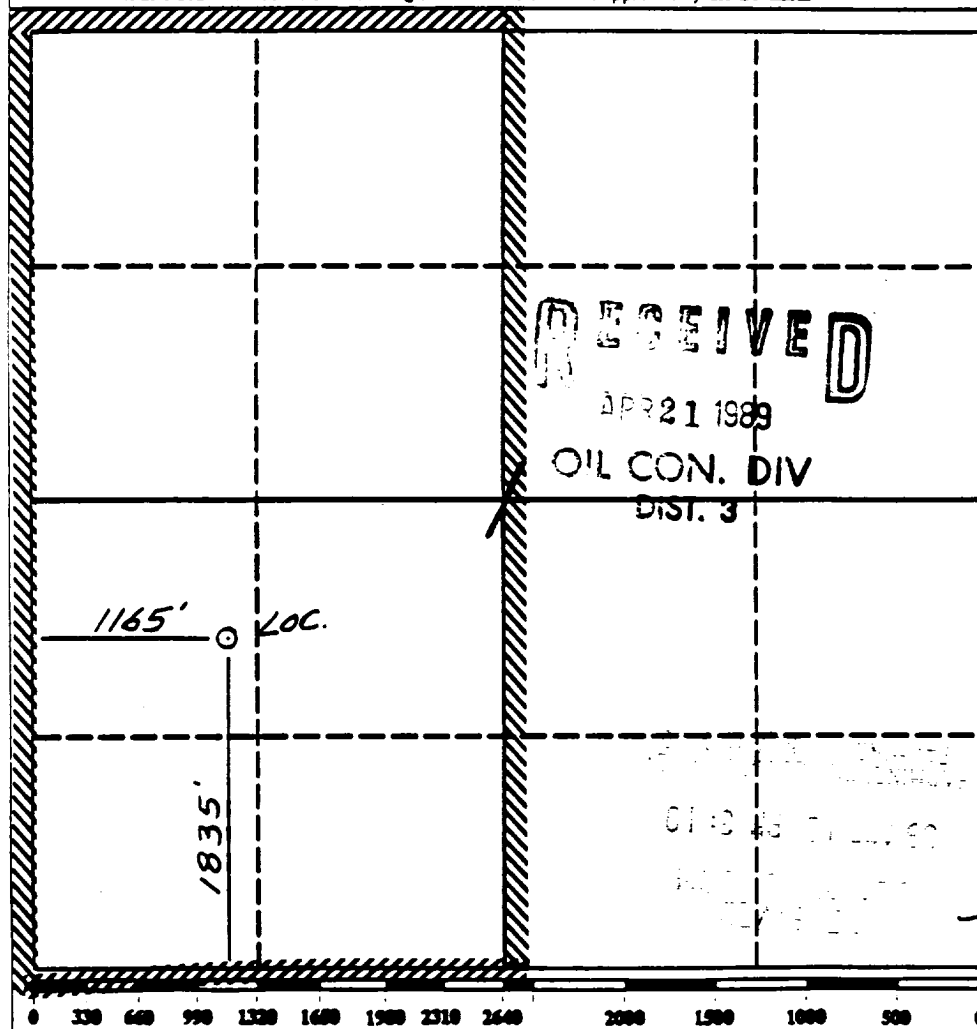
DISTRICT III
1000 Rio Bonito Rd., Aztec, NM 87410

WELL LOCATION AND ACREAGE DEDICATION PLAT

All Distances must be from the outer boundaries of the section

Operator Southland Royalty Company			Lease Davis (SF-077648)		Well No. 500
Unit Letter L	Section 1	Township 1 North	Range 12 West	County San Juan	
Actual Footage Location of Well: 1835 feet from the South line and 1165 feet from the West line					
Ground level Elev. 6370	Producing Formation Fruitland Coal		Pool Basin	Dedicated Acreage: 310.79 Acres	

- Outline the acreage dedicated to the subject well by colored pencil or Indian marks on the plat below.
- If more than one lease is dedicated to the well, outline each and identify the ownership thereof (both as to working interest and royalty).
- If more than one lease of different ownership is dedicated to the well, have the interest of all owners been consolidated by communitization, unitization, force-pooling, etc.?
☐ Yes ☐ No If answer is "yes" type of consolidation _____
If answer is "no" list the owners and tract descriptions which have actually been consolidated. (Use reverse side of this form if necessary.)
No allowable will be assigned to the well until all interests have been consolidated (by communitization, unitization, forced-pooling, or otherwise) or until a non-standard unit, eliminating such interest, has been approved by the Division.



OPERATOR CERTIFICATION

I hereby certify that the information contained herein is true and complete to the best of my knowledge and belief.

Peggy Bradfield
Signature

Peggy Bradfield

Printed Name
Regulatory Affairs

Position
Southland Royalty

Company
4-7-89

Date

SURVEYOR CERTIFICATION

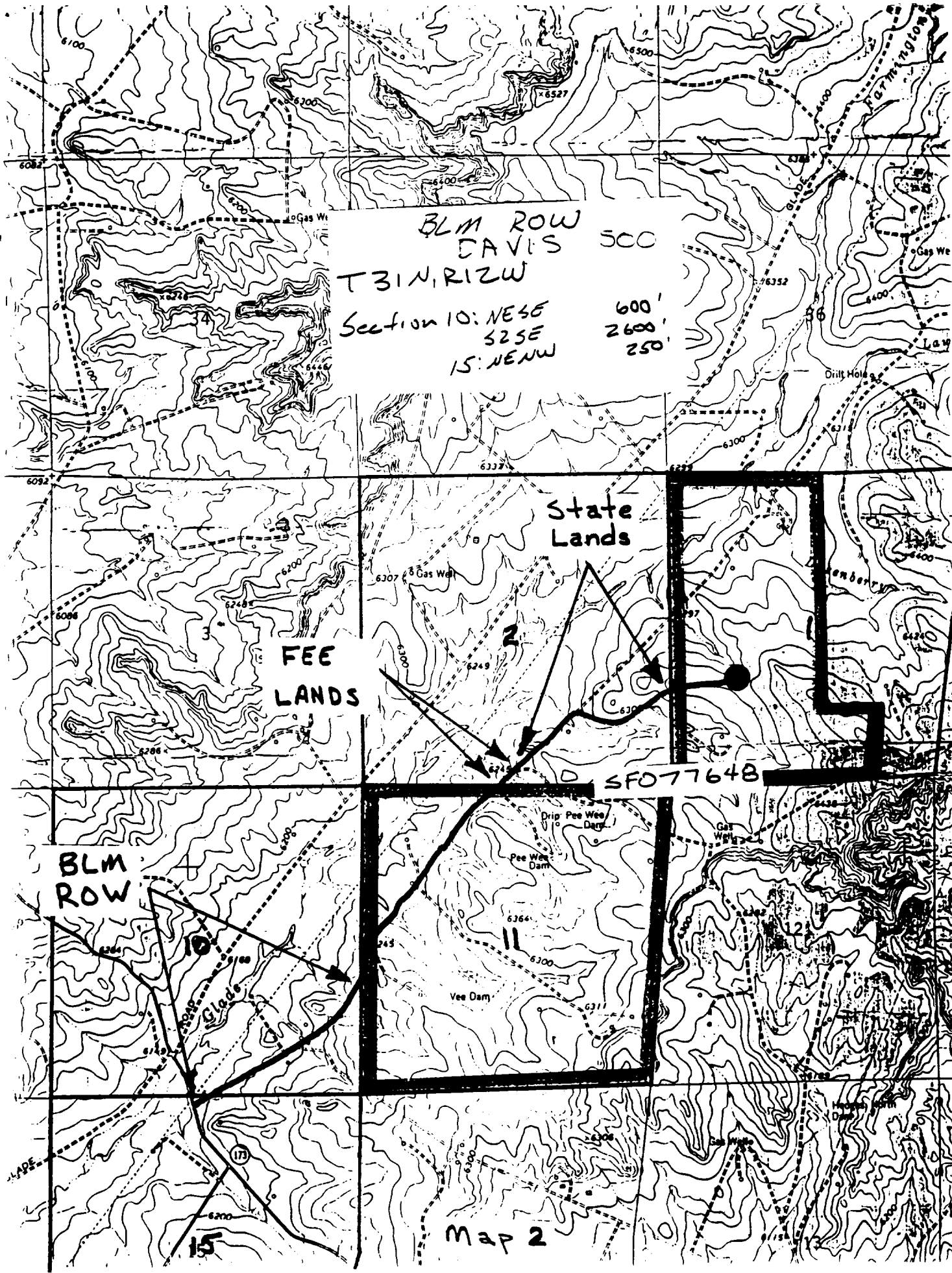
I hereby certify that the well location shown on this plat was plotted from field notes of actual surveys made by me or under my supervision, and that the same is true and correct to the best of my knowledge and belief.

Neale C. Edwards

Date Surveyed
2-17-89

Signature & Seal of
Professional Surveyor





BLM ROW DAVIS 500
T31N, R12W
Section 10: NESE 600'
S2SE 2600'
S: NEWW 250'

State
Lands

FEE
LANDS

BLM
ROW

SF077648

Map 2