

NO. OF COPIES RECEIVED	5
DISTRIBUTION	
SANTA FE	/
FILE	/
U.S.G.S.	2
LAND OFFICE	
OPERATOR	/

NEW MEXICO OIL CONSERVATION COMMISSION

30-095-23618
Form C-101
Revised 1-1-55

5A. Indicate Type of Lease
STATE ☐ FEE ☒

5. State Oil & Gas Lease No.

APPLICATION FOR PERMIT TO DRILL, DEEPEN, OR PLUG BACK

1a. Type of Work b. Type of Well OIL WELL <input type="checkbox"/> GAS WELL <input checked="" type="checkbox"/> OTHER <input type="checkbox"/> DRILL <input checked="" type="checkbox"/> DEEPEN <input type="checkbox"/> PLUG BACK <input type="checkbox"/> SINGLE ZONE <input type="checkbox"/> MULTIPLE ZONE <input checked="" type="checkbox"/>		7. Unit Agreement Name
2. Name of Operator Consolidated Oil & Gas, Inc.		8. Farm or Lease Name O'Shea
3. Address of Operator 1860 Lincoln Street, Suite 1300, Denver, Colorado 80295		9. Well No. 1-M
4. Location of Well UNIT LETTER "F" LOCATED 1450 FEET FROM THE North LINE AND 1750 FEET FROM THE West LINE OF SEC. 3 TWP. 31N RSE. 13W NMEW		10. Field and Pool, or Wildcat Mesaverde/Dakota
11. Proposed Depth 6940'		12. County San Juan
13. Formation Dakota		14. Rotary or C.T. Rotary
15. Elevation (Show whether D.P., K.I., etc.) 5838 CR	16. Kind & Status (Reg. Bond) Blanket/Inforce	17. Drilling Contractor NA
18. Approx. Date Work will start July 1, 1979		

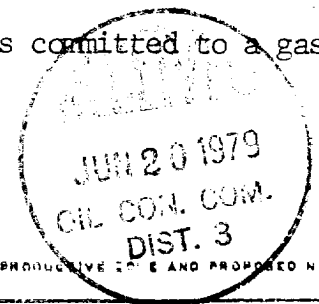
23.

PROPOSED CASING AND CEMENT PROGRAM

SIZE OF HOLE	SIZE OF CASING	WEIGHT PER FOOT	SETTING DEPTH	SACKS OF CEMENT	EST. TOP
12-1/4"	8-5/8"	24.0#	250'	200	Circ to surf.
7-7/8"	5-1/2"	15.5#	6920'	5000	3000'

1. Drill 12-1/4" hole to \pm 250'. Set 8-5/8" casing, circulate cement to surface.
2. WOC 12 hours.
3. NU BOP's. Pressure test surface casing and BOP's to 1000#.
4. Drill 7-7/8" hole to \pm 6700' w/fresh water gel mud. Log.
5. Run 5-1/2" casing and cement same in two stages w/approximately 500 sx.
6. Selectively perforate and stimulate the Mesaverde and Dakota formations and complete as required by applicable rules and regulations.

The S/2 of Section 34 is dedicated to this well and the acreage is committed to a gas sales contract.



9-18-79

IN ABOVE SPACE DESCRIBE PROPOSED PROGRAM IF PROPOSAL IS TO DEEPEN OR PLUG BACK, GIVE DATA ON PRESENT PRODUCTION ZONE AND PROPOSED NEW PRODUCTION ZONE. GIVE ALLOWOUT PREVENTER PROGRAM, IF ANY.

I hereby certify that the information above is true and complete to the best of my knowledge and belief.

Signed C. M. P. [Signature] Title Senior Production Engineer Date June 13, 1979

(This space for State Use)

APPROVED BY Frank S. Cherry TITLE DEPUTY COMMISSIONER OF OIL #3 DATE JUN 26 1979

CONDITIONS OF APPROVAL, IF ANY:

NEW MEXICO OIL CONSERVATION COMMISSION
WELL LOCATION AND ACREAGE DEDICATION PLAT

Form C-102
Supersedes C-128
Effective 1-1-65

All distances must be from the outer boundaries of the Section.

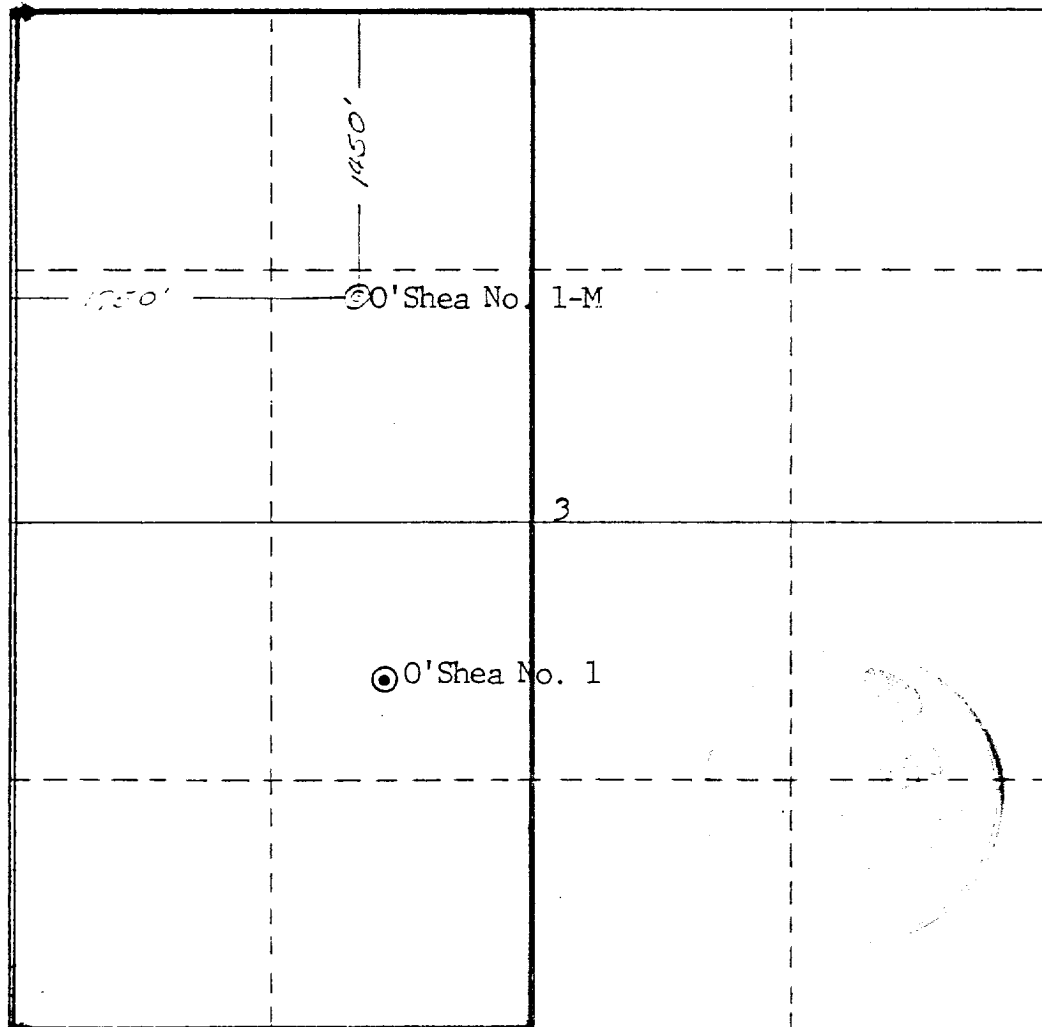
Operator CONSOLIDATED OIL AND GAS, INC.		Lease O'SHEA		Well No. 1-M
Unit Letter F	Section 3	Township 31 NORTH	Range 13 WEST	County SAN JUAN
Actual Footage Location of Well: 1450 feet from the NORTH line and 1750 feet from the WEST line				
Ground Level Elev. 5838	Producing Formation Dakota	Pool Basin Dakota	Dedicated Acreage: 320.30 Acres	

1. Outline the acreage dedicated to the subject well by colored pencil or hachure marks on the plat below.
2. If more than one lease is dedicated to the well, outline each and identify the ownership thereof (both as to working interest and royalty).
3. If more than one lease of different ownership is dedicated to the well, have the interests of all owners been consolidated by communitization, unitization, force-pooling, etc?

☒ Yes ☐ No If answer is "yes," type of consolidation Communitization

If answer is "no," list the owners and tract descriptions which have actually been consolidated. (Use reverse side of this form if necessary.) _____

No allowable will be assigned to the well until all interests have been consolidated (by communitization, unitization, forced-pooling, or otherwise) or until a non-standard unit, eliminating such interests, has been approved by the Commission.



CERTIFICATION

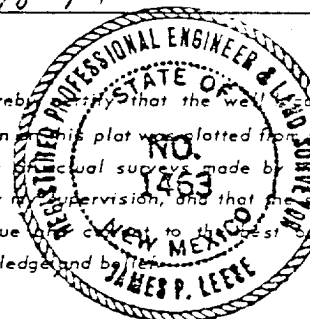
I hereby certify that the information contained herein is true and complete to the best of my knowledge and belief.

C. M. Parham

Name
C. M. Parham
Position
Senior Production Engineer
Company
Consolidated Oil & Gas, Inc.

Date
6-18-79

I hereby certify that the well location shown on this plat was plotted from old notes of actual surveys made by me or under my supervision, and that the same is true to the best of my knowledge and belief.



Date Surveyed
12 June 1979

Registered Professional Engineer and/or Land Surveyor

James P. Leese
James P. Leese

Certificate No.
1463

NEW MEXICO OIL CONSERVATION COMMISSION
WELL LOCATION AND ACREAGE DEDICATION PLAT

Form C-102
Supersedes C-128
Effective 1-1-65

All distances must be from the outer boundaries of the Section.

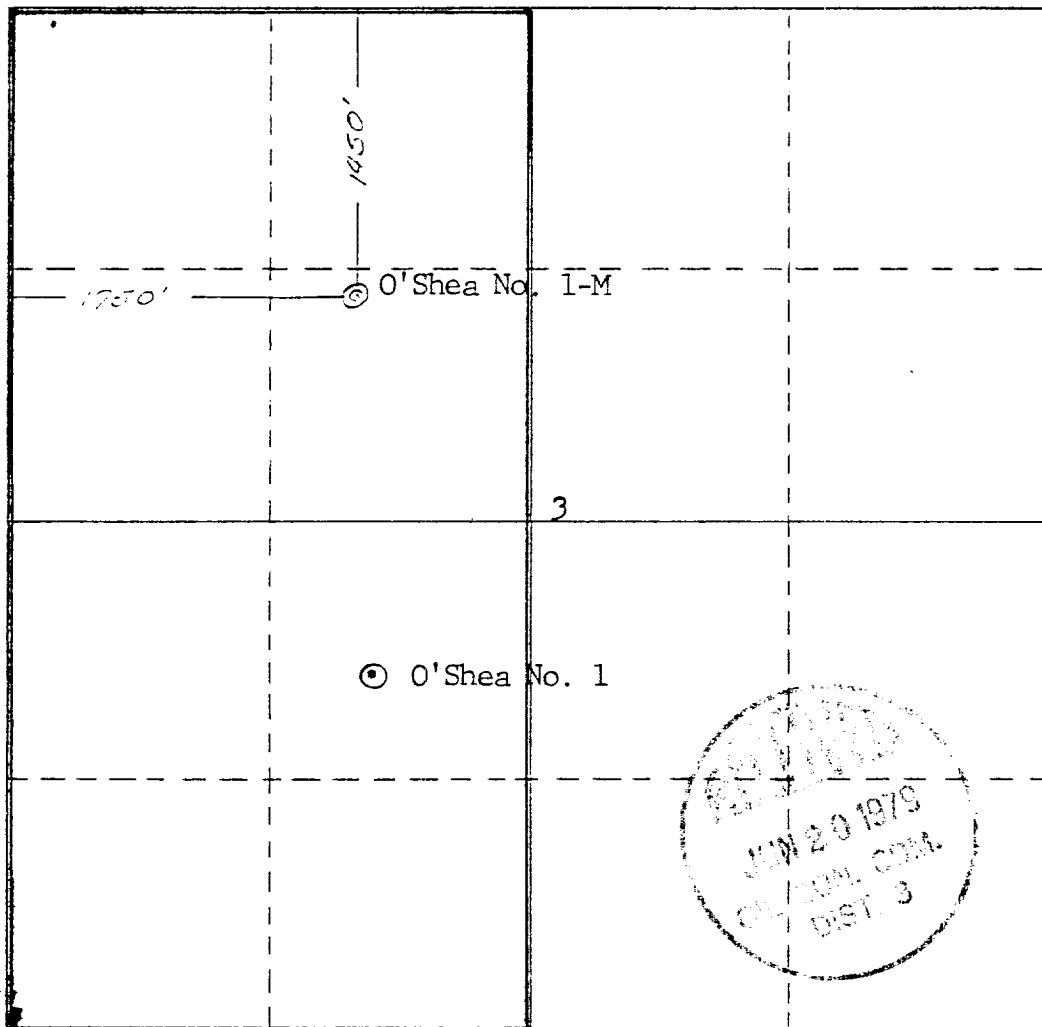
Operator CONSOLIDATED OIL AND GAS, INC.		Lease O'SHEA		Well No. 1-M
Unit Letter F	Section 3	Township 31 NORTH	Range 13 WEST	County SAN JUAN
Actual Footage Location of Well: 1450 feet from the NORTH line and 1750 feet from the WEST line				
Ground Level Elev. 5838	Producing Formation Mesaverde	Pool Blanco Mesaverde	Dedicated Acreage: 320.80 Acres	

1. Outline the acreage dedicated to the subject well by colored pencil or hachure marks on the plat below.
2. If more than one lease is dedicated to the well, outline each and identify the ownership thereof (both as to working interest and royalty).
3. If more than one lease of different ownership is dedicated to the well, have the interests of all owners been consolidated by communitization, unitization, force-pooling, etc?

☒ Yes ☐ No If answer is "yes" type of consolidation Communitization

If answer is "no," list the owners and tract descriptions which have actually been consolidated. (Use reverse side of this form if necessary.) _____

No allowable will be assigned to the well until all interests have been consolidated (by communitization, unitization, forced-pooling, or otherwise) or until a non-standard unit, eliminating such interests, has been approved by the Commission.

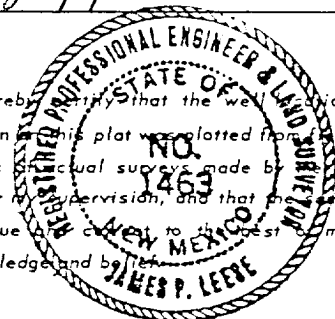


CERTIFICATION

I hereby certify that the information contained herein is true and complete to the best of my knowledge and belief.

C. M. Parham
Name
C. M. Parham
Position
Senior Production Engineer
Company
Consolidated Oil & Gas, Inc.
Date
6-18-79

I hereby certify that the well location shown on this plat was plotted from field notes of actual surveys made by me or under my supervision, and that the same is true and correct to the best of my knowledge and belief.



Date Surveyed
12 June 1979
Registered Professional Engineer and/or Land Surveyor
James P. Leese
James P. Leese

Certificate No.
1463

