

UNITED STATES
DEPARTMENT OF THE INTERIOR
BUREAU OF LAND MANAGEMENT

SUBMIT IN TRIPLICATE*
(Other instructions on re-
verse side)

Form approved
Budget Bureau No. 1004-0135
Expires August 31, 1985

SUNDRY NOTICES AND REPORTS ON WELLS

(Do not use this form for proposals to drill or to deepen or plug back to a different reservoir.
Use "APPLICATION FOR PERMIT—" for such proposals.)

5. LEASE DESIGNATION AND SERIAL NO.

SF-078439

6. IF INDIAN, ALLOTTEE OR TRIBE NAME

7. UNIT AGREEMENT NAME

8. FARM OR LEASE NAME

Johnston Federal

9. WELL NO.

15, 23, 24, & 27

10. FIELD AND POOL, OR WILDCAT

Basin Fruitland Coal

11. SEC., T., R., M., OR BLK. AND
SUBST. OR AREA

Sec. 12 - 30 N-9W

12. COUNTY OR PARISH 13. STATE

San Juan

NM

1. OIL WELL ☐ GAS WELL ☒ OTHER

2. NAME OF OPERATOR

Union Texas Petroleum Corp. -- Attn: Ken White

3. ADDRESS OF OPERATOR

P.O. Box 2120 Houston, TX 77252-2120

4. LOCATION OF WELL (Report location clearly and in accordance with any State requirements.*
See also space 17 below.)
At surface

JF 15 - SEC 35-31N-9W

JF 27 - SEC 12-30N-9W

JF 23 - SEC 35-31N-9W

JF 24 - SEC 12-30N-9W

14. PERMIT NO.

15. ELEVATIONS (Show whether DF, RT, GR, etc.)

16.

Check Appropriate Box To Indicate Nature of Notice, Report, or Other Data

NOTICE OF INTENTION TO:

TEST WATER SHUT-OFF

FRACTURE TREAT

SHOOT OR ACIDIZE

REPAIR WELL

(Other)

PULL OR ALTER CASING

MULTIPLE COMPLETE

ABANDON*

CHANGE PLANS

NTL 4-A Applicat.

X

SUBSEQUENT REPORT OF:

WATER SHUT-OFF

FRACTURE TREATMENT

SHOOTING OR ACIDIZING

(Other)

REPAIRING WELL

ALTERING CASING

ABANDONMENT*

(NOTE: Report results of multiple completion on Well
Completion or Recompletion Report and Log form.)

17. DESCRIBE PROPOSED OR COMPLETED OPERATIONS (Clearly state all pertinent details, and give pertinent dates, including estimated date of starting any proposed work. If well is directionally drilled, give subsurface locations and measured and true vertical depths for all markers and zones pertinent to this work.)*

To extract CO2 from the methane gas, a cellulose acetate membrane unit was installed to perform this function. In this process, the CO2 is vented to the atmosphere which contains approximately 10% methane gas vapors. The process is necessary to meet pipeline sales requirements. CO2 and methane are both non-regulated materials, so we are requesting approval of this venting process.

RECEIVED

SEP 2 1991

OIL CON. DIV.
DIST. 3

18. I hereby certify that the foregoing is true and correct

SIGNED

Ken White
Ken White

TITLE Reg. Permit Coord.

DATE 7-22-91

(This space for Federal or State office use)

APPROVED BY

CONDITIONS OF APPROVAL, IF ANY:

TITLE

APPROVED

DATE

AUG 29 1991

AREA MANAGER

*See Instructions on Reverse Side

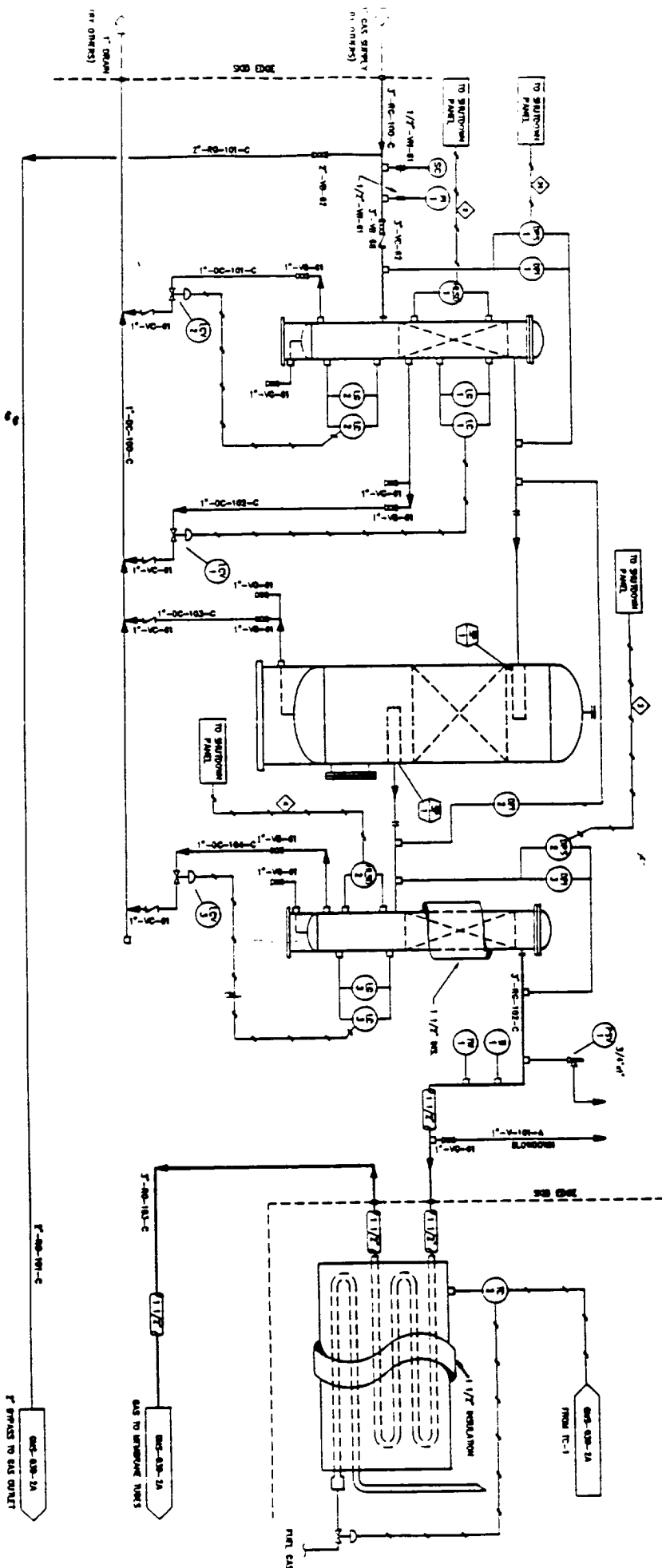
NMOCD

PV-17.01
COALSCING FILTER
SHEET 8.1 - 5-73/3
1300 PSC @ 100'

PV-17.02
GUARD BED
SHEET 8.2 - 5-73/3
1300 PSC @ 100'
(SEE ITEM 8077)

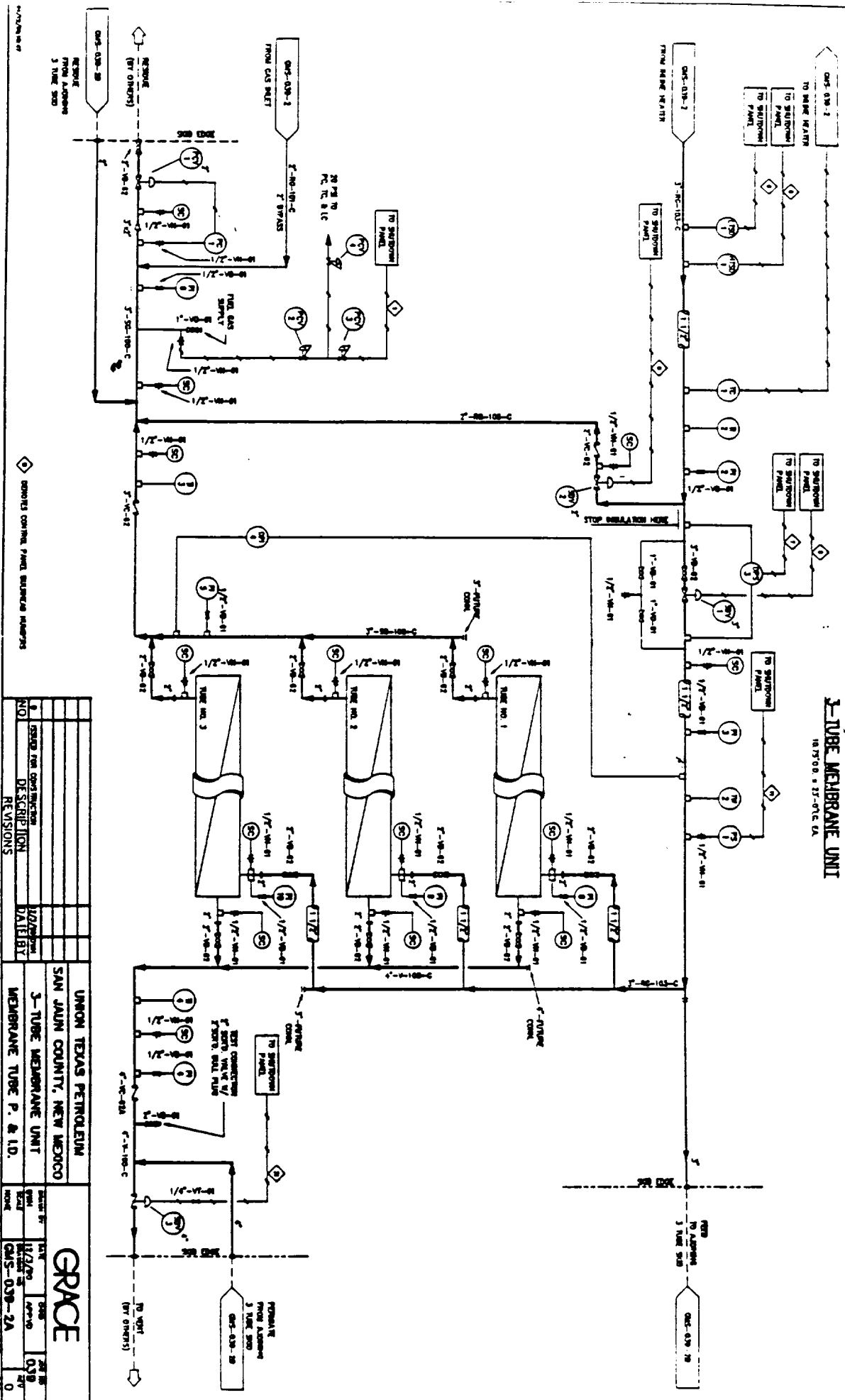
PV-17.03
POLISHING FILTER
SHEET 8.3 - 5-73/3
1300 PSC @ 100'
(SEE ITEM 8077)

HT-10.01
INLINE HEATER



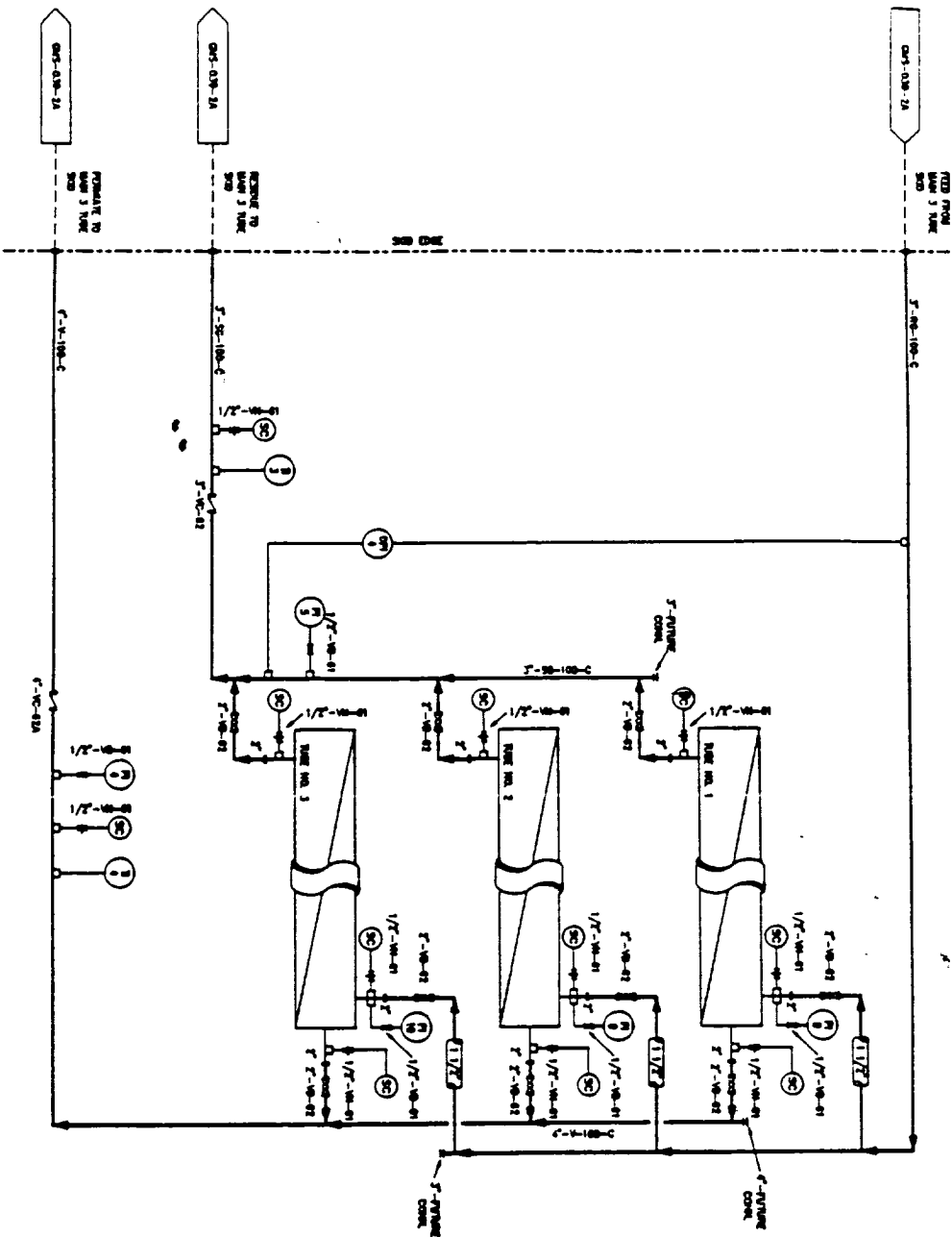
UNION TEXAS PETROLEUM				GRACE			
SAN JUAN COUNTY, NEW MEXICO							
3-TUBE MEMBRANE UNIT							
PRETREATMENT P. & I.D.							
REVISIONS							
NO.		DESCRIPTION		DATE		BY	
1		COULD NOT CONSTRUCT		10/20/70		JAN B	
2		REVISION		11/2/70		JAN B	
3		REVISION		12/2/70		JAN B	
4		REVISION		1/10/71		JAN B	
5		REVISION		2/10/71		JAN B	
6		REVISION		3/10/71		JAN B	
7		REVISION		4/10/71		JAN B	
8		REVISION		5/10/71		JAN B	
9		REVISION		6/10/71		JAN B	
10		REVISION		7/10/71		JAN B	
11		REVISION		8/10/71		JAN B	
12		REVISION		9/10/71		JAN B	
13		REVISION		10/10/71		JAN B	
14		REVISION		11/10/71		JAN B	
15		REVISION		12/10/71		JAN B	
16		REVISION		1/11/72		JAN B	
17		REVISION		2/11/72		JAN B	
18		REVISION		3/11/72		JAN B	
19		REVISION		4/11/72		JAN B	
20		REVISION		5/11/72		JAN B	
21		REVISION		6/11/72		JAN B	
22		REVISION		7/11/72		JAN B	
23		REVISION		8/11/72		JAN B	
24		REVISION		9/11/72		JAN B	
25		REVISION		10/11/72		JAN B	
26		REVISION		11/11/72		JAN B	
27		REVISION		12/11/72		JAN B	
28		REVISION		1/12/73		JAN B	
29		REVISION		2/12/73		JAN B	
30		REVISION		3/12/73		JAN B	
31		REVISION		4/12/73		JAN B	
32		REVISION		5/12/73		JAN B	
33		REVISION		6/12/73		JAN B	
34		REVISION		7/12/73		JAN B	
35		REVISION		8/12/73		JAN B	
36		REVISION		9/12/73		JAN B	
37		REVISION		10/12/73		JAN B	
38		REVISION		11/12/73		JAN B	
39		REVISION		12/12/73		JAN B	
40		REVISION		1/13/74		JAN B	
41		REVISION		2/13/74		JAN B	
42		REVISION		3/13/74		JAN B	
43		REVISION		4/13/74		JAN B	
44		REVISION		5/13/74		JAN B	
45		REVISION		6/13/74		JAN B	
46		REVISION		7/13/74		JAN B	
47		REVISION		8/13/74		JAN B	
48		REVISION		9/13/74		JAN B	
49		REVISION		10/13/74		JAN B	
50		REVISION		11/13/74		JAN B	
51		REVISION		12/13/74		JAN B	
52		REVISION		1/14/75		JAN B	
53		REVISION		2/14/75		JAN B	
54		REVISION		3/14/75		JAN B	
55		REVISION		4/14/75		JAN B	
56		REVISION		5/14/75		JAN B	
57		REVISION		6/14/75		JAN B	
58		REVISION		7/14/75		JAN B	
59		REVISION		8/14/75		JAN B	
60		REVISION		9/14/75		JAN B	
61		REVISION		10/14/75		JAN B	
62		REVISION		11/14/75		JAN B	
63		REVISION		12/14/75		JAN B	
64		REVISION		1/15/76		JAN B	
65		REVISION		2/15/76		JAN B	
66		REVISION		3/15/76		JAN B	
67		REVISION		4/15/76		JAN B	
68		REVISION		5/15/76		JAN B	
69		REVISION		6/15/76		JAN B	
70		REVISION		7/15/76		JAN B	
71		REVISION		8/15/76		JAN B	
72		REVISION		9/15/76		JAN B	
73		REVISION		10/15/76		JAN B	
74		REVISION		11/15/76		JAN B	
75		REVISION		12/15/76		JAN B	
76		REVISION		1/16/77		JAN B	
77		REVISION		2/16/77		JAN B	
78		REVISION		3/16/77		JAN B	
79		REVISION		4/16/77		JAN B	
80		REVISION		5/16/77		JAN B	
81		REVISION		6/16/77		JAN B	
82		REVISION		7/16/77		JAN B	
83		REVISION		8/16/77		JAN B	
84		REVISION		9/16/77		JAN B	
85		REVISION		10/16/77		JAN B	
86		REVISION		11/16/77		JAN B	
87		REVISION		12/16/77		JAN B	
88		REVISION		1/17/78		JAN B	
89		REVISION		2/17/78		JAN B	
90		REVISION		3/17/78		JAN B	
91		REVISION		4/17/78		JAN B	
92		REVISION		5/17/78		JAN B	
93		REVISION		6/17/78		JAN B	
94		REVISION		7/17/78		JAN B	
95		REVISION		8/17/78		JAN B	
96		REVISION		9/17/78		JAN B	
97		REVISION		10/17/78		JAN B	
98		REVISION		11/17/78		JAN B	
99		REVISION		12/17/78		JAN B	
100		REVISION		1/18/79		JAN B	
101		REVISION		2/18/79		JAN B	
102		REVISION		3/18/79		JAN B	
103		REVISION		4/18/79		JAN B	
104		REVISION		5/18/79		JAN B	
105		REVISION		6/18/79		JAN B	
106		REVISION		7/18/79		JAN B	
107		REVISION		8/18/79		JAN B	
108		REVISION		9/18/79		JAN B	
109		REVISION		10/18/79		JAN B	
110		REVISION		11/18/79		JAN B	
111		REVISION		12/18/79		JAN B	
112		REVISION		1/19/80		JAN B	
113		REVISION		2/19/80		JAN B	
114		REVISION		3/19/80		JAN B	
115		REVISION		4/19/80		JAN B	
116		REVISION		5/19/80		JAN B	
117		REVISION		6/19/80		JAN B	
118		REVISION		7/19/80		JAN B	
119		REVISION		8/19/80		JAN B	
120		REVISION		9/19/80		JAN B	
121		REVISION		10/19/80		JAN B	
122		REVISION		11/19/80		JAN B	
123		REVISION		12/19/80		JAN B	
124		REVISION		1/20/81		JAN B	
125		REVISION		2/20/81		JAN B	
126		REVISION		3/20/81		JAN B	
127		REVISION		4/20/81		JAN B	
128		REVISION		5/20/81		JAN B	
129		REVISION		6/20/81		JAN B	
130		REVISION		7/20/81		JAN B	
131		REVISION		8/20/81		JAN B	
132		REVISION		9/20/81		JAN B	
133		REVISION		10/20/81		JAN B	
134		REVISION		11/20/81		JAN B	
135		REVISION		12/20/81		JAN B	
136		REVISION		1/21/82		JAN B	
137		REVISION		2/21/82		JAN B	
138		REVISION		3/21/82		JAN B	
139		REVISION		4/21/82		JAN B	
140		REVISION		5/21/82		JAN B	
141		REVISION		6/21/82		JAN B	
142		REVISION		7/21/82		JAN B	
143		REVISION		8/21/82		JAN B	
144		REVISION		9/21/82		JAN B	
145		REVISION		10/21/82		JAN B	
146		REVISION		11/21/82		JAN B	
147		REVISION		12/21/82		JAN B	
148		REVISION		1/22/83		JAN B	
149		REVISION		2/22/83		JAN B	
150		REVISION		3/22/83		JAN B	
151		REVISION		4/22/83		JAN B	
152		REVISION		5/22/83		JAN B	
153		REVISION		6/22/83		JAN B	
154		REVISION		7/22/83		JAN B	
155		REVISION		8/22/83		JAN B	
156		REVISION		9/22/83		JAN B	
157		REVISION		10/22/83		JAN B	
158		REVISION		11/22/83		JAN B	
159		REVISION		12/22/83		JAN B	
160		REVISION		1/23/84		JAN B	
161		REVISION		2/23/84		JAN B	
162		REVISION		3/23/84		JAN B	
163		REVISION		4/23/84		JAN B	
164		REVISION		5/23/84		JAN B	
165		REVISION		6/23/84		JAN B	
166		REVISION		7/23/84		JAN B	
167		REVISION		8/23/84		JAN B	
168		REVISION		9/23/84		JAN B	
169		REVISION		10/23/84		JAN B	
170		REVISION		11/23/84		JAN B	
171		REVISION		12/23/84		JAN B	
172		REVISION		1/24/85		JAN B	
173		REVISION		2/24/85		JAN B	
174		REVISION		3/24/85		JAN B	
175		REVISION		4/24/85		JAN B	
176		REVISION		5/24/85		JAN B	
177		REVISION		6/24/85		JAN B	
178		REVISION		7/24/85		JAN B	
179		REVISION		8/24/85		JAN B	
180		REVISION		9/24/85		JAN B	
181		REVISION		10/24/85		JAN B	
182		REVISION		11/24/85		JAN B	
183		REVISION		12/24/85		JAN B	
184		REVISION		1/25/86		JAN B	
185		REVISION		2/25/86		JAN B	
186		REVISION		3/25/86		JAN B	
187		REVISION		4/25/86		JAN B	
188		REVISION		5/25/86		JAN B	
189		REVISION		6/25/86		JAN B	
190		REVISION		7/25/86		JAN B	
191		REVISION		8/25/86		JAN B	
192		REVISION		9/25/86		JAN B	
193		REVISION		10/25/86		JAN B	
194		REVISION		11/25/86		JAN B	
195		REVISION		12/25/86		JAN B	
196		REVISION		1/26/87		JAN B	
197		REVISION		2/26/87		JAN B	
198		REVISION		3/26/87		JAN B	
199		REVISION		4/26/87		JAN B	
200		REVISION		5/26/87		JAN B	
201		REVISION		6/26/87		JAN B	
202		REVISION		7/26/87		JAN B	
203		REVISION		8/26/87		JAN B	
204		REVISION		9/26/87		JAN B	
205		REVISION		10/26/87		JAN B	
206		REVISION		11/26/87		JAN B	
207		REVISION		12/26/87		JAN B	
208		REVISION		1/27/88		JAN B	
209		REVISION		2/27/88		JAN B	
210		REVISION		3/27/88		JAN B	
211		REVISION		4/27/88		JAN B	
212		REVISION		5/27/88		JAN B	
213		REVISION		6/27/88		JAN B	
214		REVISION		7/27/88		JAN B	
215		REVISION		8/27/88		JAN B	
216		REVISION		9/27/88		JAN B	
217		REVISION		10/27/88		JAN B	
218		REVISION		11/27/88		JAN B	
219		REVISION		12/27/88		JAN B	
220		REVISION		1/28/89		JAN B	
221		REVISION		2/28/89		JAN B	
222		REVISION		3/28/89		JAN B	
223		REVISION		4/28/89		JAN B	
224		REVISION		5/28/89		JAN B	
225		REVISION		6/28/89		JAN B	
226		REVISION		7/28/89		JAN B	
227		REVISION		8/28/89		JAN B	
228		REVISION		9/28/89		JAN B	
229		REVISION		10/28/89		JAN B	
230		REVISION		11/28/89		JAN B	
231		REVISION		12/28/89		JAN B	
232		REVISION		1/29/90		JAN B	
233		REVISION		2/29/90		JAN B	
234		REVISION		3/29/90		JAN B	
235		REVISION		4/29/90		JAN B	
236		REVISION		5/29/90		JAN B	
237		REVISION		6/29/90		JAN B	
238		REVISION		7/29/90		JAN B	
239		REVISION		8/29/90		JAN B	
240		REVISION		9/29/90		JAN B	
241							

3-TUBE MEMBRANE UNIT 10 TON - 25-01C 1A



UNION TEXAS PETROLEUM				GRACE			
SAN JUAN COUNTY, NEW MEXICO							
3-TUBE MEMBRANE UNIT							
MEMBRANE TUBE P. & I.D.							
NO.	ISSUED AND CORRECTIONS	DATE	BY	NO.	ISSUED AND CORRECTIONS	DATE	BY
1	REVISIONS			2	REVISIONS		
2				3			
3				4			
4				5			
5				6			
6				7			
7				8			
8				9			
9				10			
10				11			
11				12			
12				13			
13				14			
14				15			
15				16			
16				17			
17				18			
18				19			
19				20			
20				21			
21				22			
22				23			
23				24			
24				25			
25				26			
26				27			
27				28			
28				29			
29				30			
30				31			
31				32			
32				33			
33				34			
34				35			
35				36			
36				37			
37				38			
38				39			
39				40			
40				41			
41				42			
42				43			
43				44			
44				45			
45				46			
46				47			
47				48			
48				49			
49				50			
50				51			
51				52			
52				53			
53				54			
54				55			
55				56			
56				57			
57				58			
58				59			
59				60			
60				61			
61				62			
62				63			
63				64			
64				65			
65				66			
66				67			
67				68			
68				69			
69				70			
70				71			
71				72			
72				73			
73				74			
74				75			
75				76			
76				77			
77				78			
78				79			
79				80			
80				81			
81				82			
82				83			
83				84			
84				85			
85				86			
86				87			
87				88			
88				89			
89				90			
90				91			
91				92			
92				93			
93				94			
94				95			
95				96			
96				97			
97				98			
98				99			
99				100			

3-TUBE MEMBRANE UNIT NISTOD & 25-476 EA



		UNION TEXAS PETROLEUM		GRACE	
		SAN JUAN COUNTY, NEW MEXICO			
		3-TUBE MEMBRANE UNIT			
		MEMBRANE TUBE P. & I.D.			
DESCRIPTION		DATE		BY	
REVISIONS		DATE		BY	
NO.		DATE		BY	
		01/10/71		J. W. H.	
		02/10/71		J. W. H.	
		03/10/71		J. W. H.	
		04/10/71		J. W. H.	
		05/10/71		J. W. H.	
		06/10/71		J. W. H.	
		07/10/71		J. W. H.	
		08/10/71		J. W. H.	
		09/10/71		J. W. H.	
		10/10/71		J. W. H.	
		11/10/71		J. W. H.	
		12/10/71		J. W. H.	
		01/10/72		J. W. H.	
		02/10/72		J. W. H.	
		03/10/72		J. W. H.	
		04/10/72		J. W. H.	
		05/10/72		J. W. H.	
		06/10/72		J. W. H.	
		07/10/72		J. W. H.	
		08/10/72		J. W. H.	
		09/10/72		J. W. H.	
		10/10/72		J. W. H.	
		11/10/72		J. W. H.	
		12/10/72		J. W. H.	
		01/10/73		J. W. H.	
		02/10/73		J. W. H.	
		03/10/73		J. W. H.	
		04/10/73		J. W. H.	
		05/10/73		J. W. H.	
		06/10/73		J. W. H.	
		07/10/73		J. W. H.	
		08/10/73		J. W. H.	
		09/10/73		J. W. H.	
		10/10/73		J. W. H.	
		11/10/73		J. W. H.	
		12/10/73		J. W. H.	
		01/10/74		J. W. H.	
		02/10/74		J. W. H.	
		03/10/74		J. W. H.	
		04/10/74		J. W. H.	
		05/10/74		J. W. H.	
		06/10/74		J. W. H.	
		07/10/74		J. W. H.	
		08/10/74		J. W. H.	
		09/10/74		J. W. H.	
		10/10/74		J. W. H.	
		11/10/74		J. W. H.	
		12/10/74		J. W. H.	
		01/10/75		J. W. H.	
		02/10/75		J. W. H.	
		03/10/75		J. W. H.	
		04/10/75		J. W. H.	
		05/10/75		J. W. H.	
		06/10/75		J. W. H.	
		07/10/75		J. W. H.	
		08/10/75		J. W. H.	
		09/10/75		J. W. H.	
		10/10/75		J. W. H.	
		11/10/75		J. W. H.	
		12/10/75		J. W. H.	
		01/10/76		J. W. H.	
		02/10/76		J. W. H.	
		03/10/76		J. W. H.	
		04/10/76		J. W. H.	
		05/10/76		J. W. H.	
		06/10/76		J. W. H.	
		07/10/76		J. W. H.	
		08/10/76		J. W. H.	
		09/10/76		J. W. H.	
		10/10/76		J. W. H.	
		11/10/76		J. W. H.	
		12/10/76		J. W. H.	
		01/10/77		J. W. H.	
		02/10/77		J. W. H.	
		03/10/77		J. W. H.	
		04/10/77		J. W. H.	
		05/10/77		J. W. H.	
		06/10/77		J. W. H.	
		07/10/77		J. W. H.	
		08/10/77		J. W. H.	
		09/10/77		J. W. H.	
		10/10/77		J. W. H.	
		11/10/77		J. W. H.	
		12/10/77		J. W. H.	
		01/10/78		J. W. H.	
		02/10/78		J. W. H.	
		03/10/78		J. W. H.	
		04/10/78		J. W. H.	
		05/10/78		J. W. H.	
		06/10/78		J. W. H.	
		07/10/78		J. W. H.	
		08/10/78		J. W. H.	
		09/10/78		J. W. H.	
		10/10/78		J. W. H.	
		11/10/78		J. W. H.	
		12/10/78		J. W. H.	
		01/10/79		J. W. H.	
		02/10/79		J. W. H.	
		03/10/79		J. W. H.	
		04/10/79		J. W. H.	
		05/10/79		J. W. H.	
		06/10/79		J. W. H.	
		07/10/79		J. W. H.	
		08/10/79		J. W. H.	
		09/10/79		J. W. H.	
		10/10/79		J. W. H.	
		11/10/79		J. W. H.	
		12/10/79		J. W. H.	
		01/10/80		J. W. H.	
		02/10/80		J. W. H.	
		03/10/80		J. W. H.	
		04/10/80		J. W. H.	
		05/10/80		J. W. H.	
		06/10/80		J. W. H.	
		07/10/80		J. W. H.	
		08/10/80		J. W. H.	
		09/10/80		J. W. H.	
		10/10/80		J. W. H.	
		11/10/80		J. W. H.	
		12/10/80		J. W. H.	
		01/10/81		J. W. H.	
		02/10/81		J. W. H.	
		03/10/81		J. W. H.	
		04/10/81		J. W. H.	
		05/10/81		J. W. H.	
		06/10/81		J. W. H.	
		07/10/81		J. W. H.	
		08/10/81		J. W. H.	
		09/10/81		J. W. H.	
		10/10/81		J. W. H.	
		11/10/81		J. W. H.	
		12/10/81		J. W. H.	
		01/10/82		J. W. H.	
		02/10/82		J. W. H.	
		03/10/82		J. W. H.	
		04/10/82		J. W. H.	
		05/10/82		J. W. H.	
		06/10/82		J. W. H.	
		07/10/82		J. W. H.	
		08/10/82		J. W. H.	
		09/10/82		J. W. H.	
		10/10/82		J. W. H.	
		11/10/82		J. W. H.	
		12/10/82		J. W. H.	
		01/10/83		J. W. H.	
		02/10/83		J. W. H.	
		03/10/83		J. W. H.	
		04/10/83		J. W. H.	
		05/10/83		J. W. H.	
		06/10/83		J. W. H.	
		07/10/83		J. W. H.	
		08/10/83		J. W. H.	
		09/10/83		J. W. H.	
		10/10/83		J. W. H.	
		11/10/83		J. W. H.	
		12/10/83		J. W. H.	
		01/10/84		J. W. H.	
		02/10/84		J. W. H.	
		03/10/84		J. W. H.	
		04/10/84		J. W. H.	
		05/10/84		J. W. H.	
		06/10/84		J. W. H.	
		07/10/84		J. W. H.	
		08/10/84		J. W. H.	
		09/10/84		J. W. H.	
		10/10/84		J. W. H.	
		11/10/84		J. W. H.	
		12/10/84		J. W. H.	
		01/10/85		J. W. H.	
		02/10/85		J. W. H.	
		03/10/85		J. W. H.	
		04/10/85		J. W. H.	
		05/10/85		J. W. H.	
		06/10/85		J. W. H.	
		07/10/85		J. W. H.	
		08/10/85		J. W. H.	
		09/10/85		J. W. H.	
		10/10/85		J. W. H.	
		11/10/85		J. W. H.	
		12/10/85		J. W. H.	
		01/10/86		J. W. H.	
		02/10/86		J. W. H.	
		03/10/86		J. W. H.	
		04/10/86		J. W. H.	
		05/10/86		J. W. H.	
		06/10/86		J. W. H.	
		07/10/86		J. W. H.	
		08/10/86		J. W. H.	
		09/10/86		J. W. H.	
		10/10/86		J. W. H.	
		11/10/86		J. W. H.	
		12/10/86		J. W. H.	
		01/10/87		J. W. H.	
		02/10/87		J. W. H.	
		03/10/87		J. W. H.	
		04/10/87		J. W. H.	
		05/10/87		J. W. H.	
		06/10/87		J. W. H.	
		07/10/87		J. W. H.	
		08/10/87		J. W. H.	
		09/10/87		J. W. H.	
		10/10/87		J. W. H.	
		11/10/87		J. W. H.	
		12/10/87		J. W. H.	
		01/10/88		J. W. H.	
		02/10/88		J. W. H.	
		03/10/88		J. W. H.	
		04/10/88		J. W. H.	
		05/10/88		J. W. H.	
		06/10/88		J. W. H.	
		07/10/88		J. W. H.	
		08/10/88		J. W. H.	
		09/10/88		J. W. H.	
		10/10/88		J. W. H.	
		11/10/88		J. W. H.	
		12/10/88		J. W. H.	
		01/10/89		J. W. H.	
		02/10/89		J. W. H.	
		03/10/89		J. W. H.	
		04/10/89		J. W. H.	
		05/10/89		J. W. H.	
		06/10/89		J. W. H.	
		07/10/89		J. W. H.	
		08/10/89		J. W. H.	
		09/10/89		J. W. H.	
		10/10/89		J. W. H.	
		11/10/89		J. W. H.	
		12/10/89		J. W. H.	
		01/10/90		J. W. H.	
		02/10/90		J. W. H.	
		03/10/90		J. W. H.	
		04/10/90		J. W. H.	
		05/10/90		J. W. H.	
		06/10/90		J. W. H.	
		07/10/90		J. W. H.	
		08/10/90		J. W. H.	
		09/10/90		J. W. H.	
		10/10/90		J. W. H.	
		11/10/90		J. W. H.	
		12/10/90		J. W. H.	
		01/10/91		J. W. H.	
		02/10/91		J. W. H.	
		03/10/91		J. W. H.	
		04/10/91		J. W. H.	
		05/10/91		J. W. H.	
		06/10/91		J. W. H.	
		07/10/91		J. W. H.	
		08/10/91		J. W. H.	
		09/10/91		J. W. H.	
		10/10/91		J. W. H.	
		11/10/91		J. W. H.	
		12/10/91		J. W. H.	
		01/10/92		J. W. H.	
		02/10/92		J. W. H.	
		03/10/92		J. W. H.	
		04/10/92		J. W. H.	
		05/10/92		J. W. H.	
		06/10/92		J. W. H.	
		07/10/92		J. W. H.	
		08/10/92		J. W. H.	
		09/10/92		J. W. H.	
		10/10/92		J. W. H.	
		11/10/92		J. W. H.	
		12/10/92		J. W. H.	
		01/10/93		J. W. H.	
		02/10/93		J. W. H.	
		03/10/93		J. W. H.	
		04/10/93		J. W. H.	
		05/10/93		J. W. H.	
		06/10/93		J. W. H.	
		07/10/93		J. W. H.	
		08/10/93		J. W. H.	
		09/10/93		J. W. H.	
		10/10/93		J. W. H.	
		11/10/93		J. W. H.	
		12/10/93		J. W. H.	
		01/10/94		J. W. H.	
		02/10/94		J. W. H.	
		03/10/94		J. W. H.	
		04/10/94		J. W. H.	
		05/10/94		J. W. H.	
		06/10/94		J. W. H.	
		07/10/94		J. W. H.	
		08/10/94		J. W. H.	
		09/10/94		J. W. H.	
		10/10/94		J. W. H.	
		11/10/94		J. W. H.	
		12/10/94		J. W. H.	
		01/10/95		J. W. H.	
		02/10/95		J. W. H.	
		03/10/95		J. W. H.	
		04/10/95		J. W. H.	
		05/10/95		J. W. H.	
		06/10/95		J. W. H.	
		07/10/95		J. W. H.	
		08/10/95		J. W. H.	
		09/10/95		J. W. H.	
		10/10/95		J. W. H.	
		11/10/95		J. W. H.	
		12/10/95		J. W. H.	
		01/10/96		J. W. H.	
		02/10/96		J. W. H.	
		03/10/96		J. W. H.	
		04/10/96		J. W. H.	