

UNITED STATES
DEPARTMENT OF THE INTERIOR
GEOLOGICAL SURVEY30-045-24710
5. LEASE DESIGNATION AND SERIAL NO.
NM-6892

APPLICATION FOR PERMIT TO DRILL, DEEPEN, OR PLUG BACK

1a. TYPE OF WORK

DRILL ☒DEEPEN ☐PLUG BACK ☐

b. TYPE OF WELL

OIL
WELL ☐GAS
WELL ☒

OTHER

SINGLE
ZONE ☒MULTIPLE
ZONE ☐

2. NAME OF OPERATOR

Southland Royalty Company

3. ADDRESS OF OPERATOR

P. O. Drawer 570, Farmington, NM 87401

4. LOCATION OF WELL (Report location clearly and in accordance with any State requirements.)

At surface
790' FNL & 950' FWL
At proposed prod. zone

14. DISTANCE IN MILES AND DIRECTION FROM NEAREST TOWN OR POST OFFICE*

Approximately 19 miles NE of Bloomfield, NM

15. DISTANCE FROM PROPOSED*

LOCATION TO NEAREST
PROPERTY OR LEASE LINE, FT.
(Also to nearest drlg. unit line, if any)

790'

18. DISTANCE FROM PROPOSED LOCATION*
TO NEAREST WELL, DRILLING, COMPLETED,
OR APPLIED FOR, ON THIS LEASE, FT.

200'

16. NO. OF ACRES IN LEASE

640.00

19. PROPOSED DEPTH

3720'

17. NO. OF ACRES ASSIGNED
TO THIS WELL

160

20. ROTARY OR CABLE TOOLS

Rotary

21. ELEVATIONS (Show whether DF, RT, GR, etc.)

6667' GR

22. APPROX. DATE WORK WILL START*

November 1, 1980

23.

PROPOSED CASING AND CEMENTING PROGRAM

SIZE OF HOLE	SIZE OF CASING	WEIGHT PER FOOT	SETTING DEPTH	QUANTITY OF CEMENT
12 1/4"	8 5/8"	24#	300'	210 sx (Circ. to surf.)
7 7/8"	4 1/2"	10.5#	3720'	320 sx (Cover Ojo Alamo)

Surface formation is San Jose.

Top of Ojo Alamo sand is at 2412'.

Top of Pictured Cliffs sand is at 3467'.

Fresh water mud will be used to drill from surface to total depth.

It is anticipated that an IES and a GR-Density log will be run at total depth.

No abnormal pressures or poisonous gases are anticipated in this well.

It is expected that this well will be drilled before December 31, 1980.

This depends on time required for approval, rig availability and the weather.

Gas is not dedicated.

IN ABOVE SPACE DESCRIBE PROPOSED PROGRAM: If proposal is to deepen or plug back, give data on present productive zone and proposed new productive zone. If proposal is to drill or deepen directionally, give pertinent data on subsurface locations and measured and true vertical depths. Give blowout preventer program, if any.

24.

SIGNED

R. E. Fielder

TITLE District Engineer

DATE 10-8-80

(This space for Federal or State office use)

PERMIT NO.

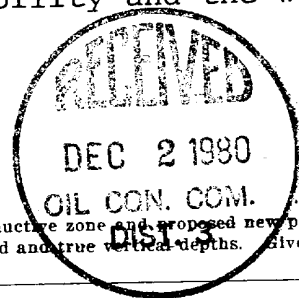
APPROVAL DATE

APPROVED BY

CONDITIONS OF APPROVAL, IF ANY

TITLE

DATE

For [Signature]

WELL LOCATION AND ACREAGE DEDICATION PLAT

Effective 1-1-65

All distances must be from the outer boundaries of the Section.

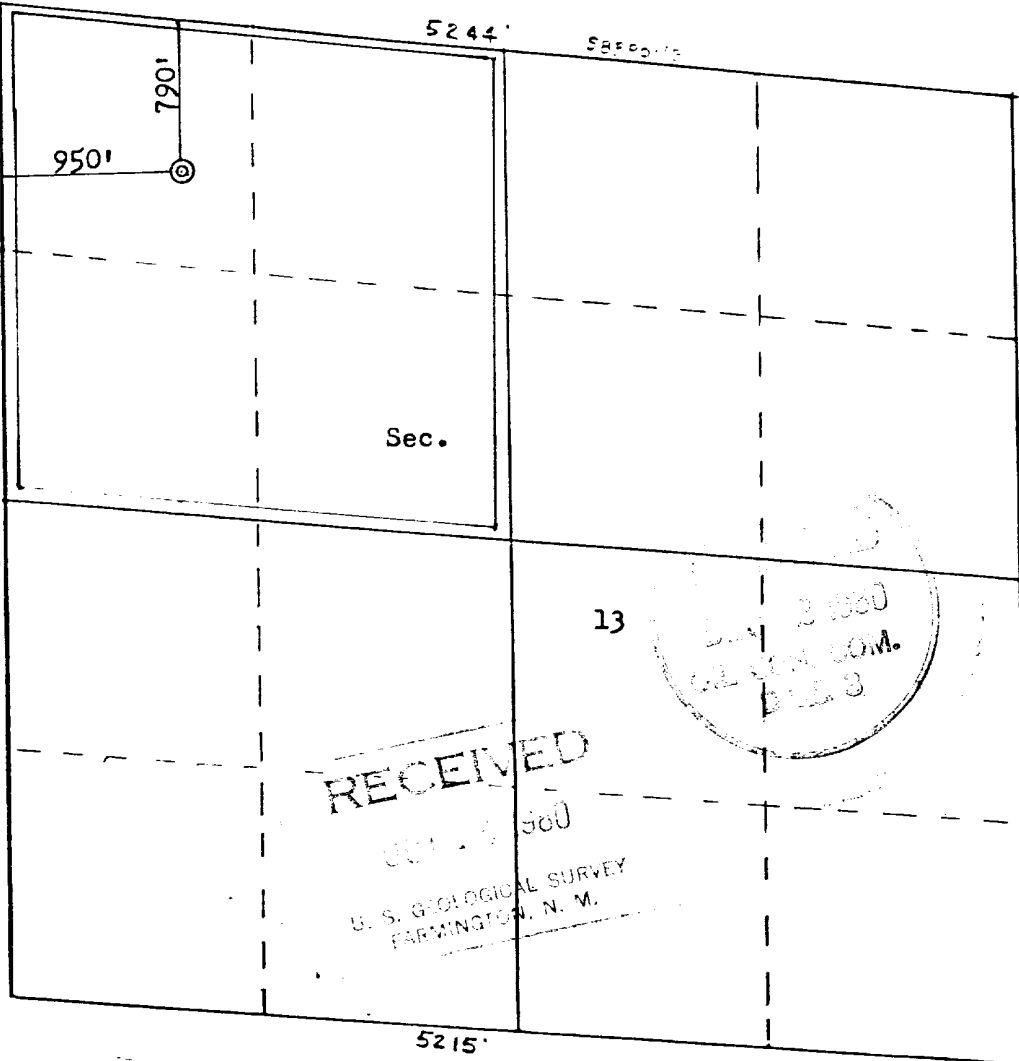
Operator SOUTHLAND ROYALTY COMPANY			Lease REESE MESA		Well No. 9
Unit Letter D	Section 13	Township 32N	Range 8W	County San Juan	
Actual Footage Location of Well: 790 feet from the North line and 950 feet from the West line					
Ground Level Elev: 6667	Producing Formation Pictured Cliffs		Pool Undesignated		Dedicated Acreage: 160 Acres

1. Outline the acreage dedicated to the subject well by colored pencil or hachure marks on the plat below.
2. If more than one lease is dedicated to the well, outline each and identify the ownership thereof (both as to working interest and royalty).
3. If more than one lease of different ownership is dedicated to the well, have the interests of all owners been consolidated by communitization, unitization, force-pooling, etc?

☐ Yes ☐ No If answer is "yes," type of consolidation _____

If answer is "no," list the owners and tract descriptions which have actually been consolidated. (Use reverse side of this form if necessary.) _____

No allowable will be assigned to the well until all interests have been consolidated (by communitization, unitization, forced-pooling, or otherwise) or until a non-standard unit, eliminating such interests, has been approved by the Commission.



CERTIFICATION

I hereby certify that the information contained herein is true and complete to the best of my knowledge and belief.

R. E. Fielder

Name

Robert E. Fielder

Position

District Engineer

Company

Southland Royalty Co.

Date

October 8, 1980

I hereby certify that the well location shown on this plat was plotted from field notes of actual surveys made by me or under my supervision, and that the same is true and correct to the best of my knowledge and belief.

Date Surveyed

September 25, 1980

Registered Professional Engineer and Land Surveyor N.C.

Fred B. Kerr Jr.
Fred B. Kerr Jr.

Certificate No.

3950

10", 2000 psi X 6", 2000 psi casinghead

Cementing:

8 5/8" surface casing: 210 sx (248 cu. ft.) of Cl "B" with 1/4# gel flake/sx & 3% CaCl_2 . WOC 12 hours. Test to 600 psi prior to drilling out. (Volume is 100% excess.)

4 1/2" production casing: Lead - 240 sx (358 cu. ft.) of Cl B, 50/50 Poz with 6% gel.

Tail - 80 sx (94 cu. ft.) of Cl "B" neat.

(Volume is 50% excess for gauge hole to cover Ojo Alamo.

L. O. Van Ryan
District Production Manager

JAC/ke

9-29-80



Southland Royalty Company

October 8, 1980

United States Geological Survey
Mr. James F. Sims
District Oil and Gas Supervisor
P. O. Box 959
Farmington, NM 87401

Dear Mr. Sims:

Enclosed please find a map showing existing roads and planned access roads to Southland Royalty Company's Reese Mesa #9 well.

The locations of tank batteries and flow lines will be on location with well. A burn pit will be provided for disposal of trash. Cuttings, drilling fluid, and produced fluids will be put into the reserve pit and properly disposed of depending on amount and type of fluids.

There will be no camps or airstrips.

Also, enclosed is a location layout showing approximate location of rig, pits and pipe racks.

Water supply for this well will be Pine River.

The terrain is rolling hills with sagebrush. The location will be restored according the Bureau of Land Management standards. This work will begin when all related construction is finished.

Mr. Ross Lankford will be Southland Royalty Company's field representative supervising these operations. Either he or myself may be reached anytime at 325-7391.

Sincerely,

SOUTHLAND ROYALTY COMPANY

Robert E. Fielder
District Engineer

REF/ke



Southland Royalty Company

October 8, 1980

United States Geological Survey
Mr. James F. Sims
District Oil and Gas Supervisor
P. O. Box 959
Farmington, NM 87401

RE: Blowout Preventer Plan

Dear Mr. Sims:

All drilling and completion rigs will be equipped with 6" or larger double hydraulic blowout preventers and a hydraulic closing unit with steel lines.

The preventer is 3000# working pressure and 6000# test pressure.

All crews will be thoroughly trained in the operation of this preventer. The preventer will be tested frequently enough to ensure proper operation.

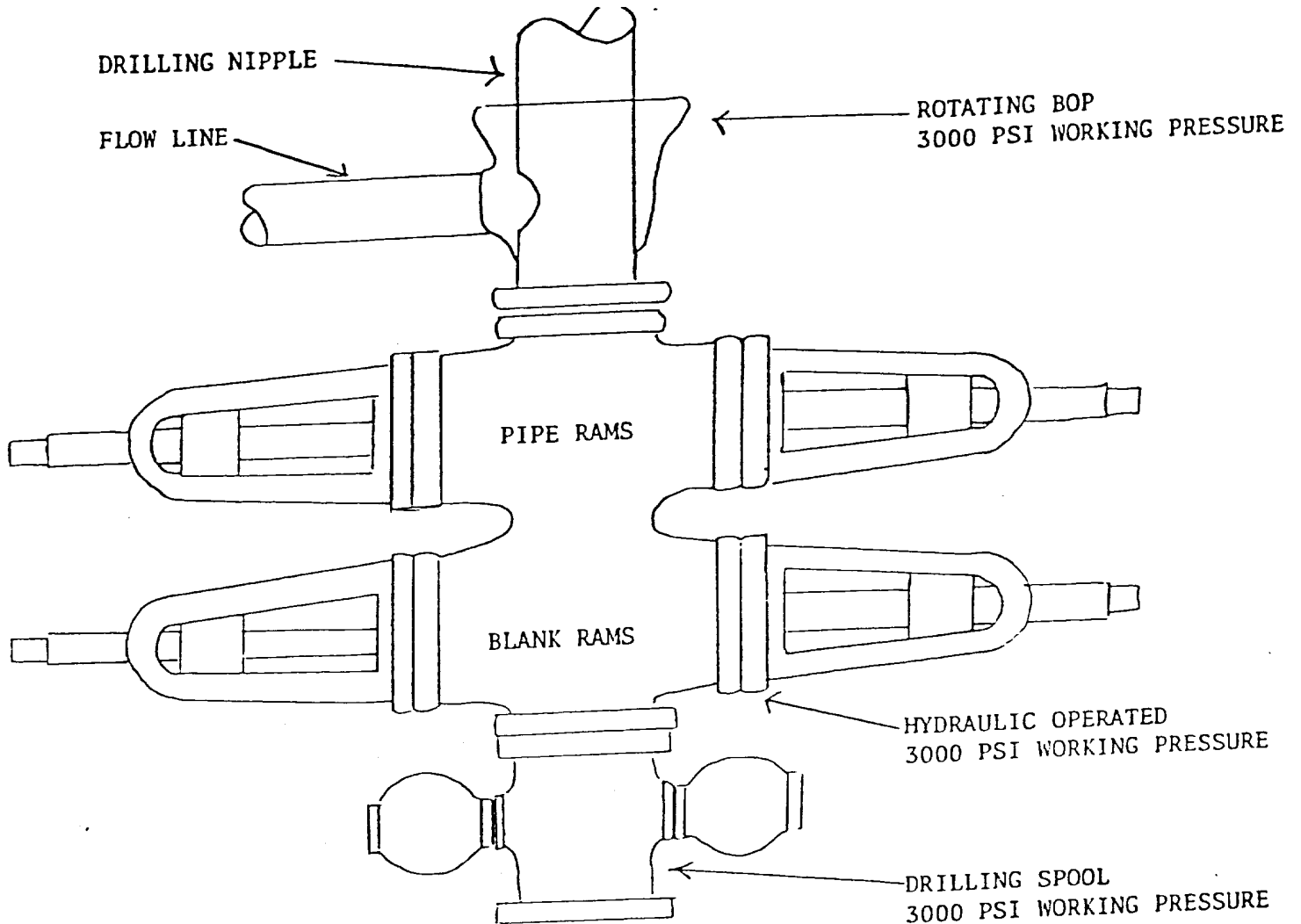
Sincerely,

SOUTHLAND ROYALTY COMPANY

Robert E. Fielder
District Engineer

REF/ke

Southland Royalty Company
Reese Mesa #9
Section 13, T32N, R8W
San Juan County, NM



PREVENTERS AND SPOOLS ARE TO HAVE
THROUGH BORE OF 6" - 3000 PSI OR LARGER



Southland Royalty Company

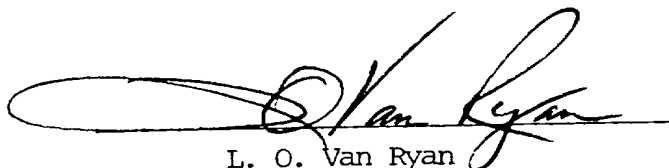
October 8, 1980

United States Geological Survey
Mr. James Sims
P. O. Box 595
Farmington, NM 87401

Dear Sir:

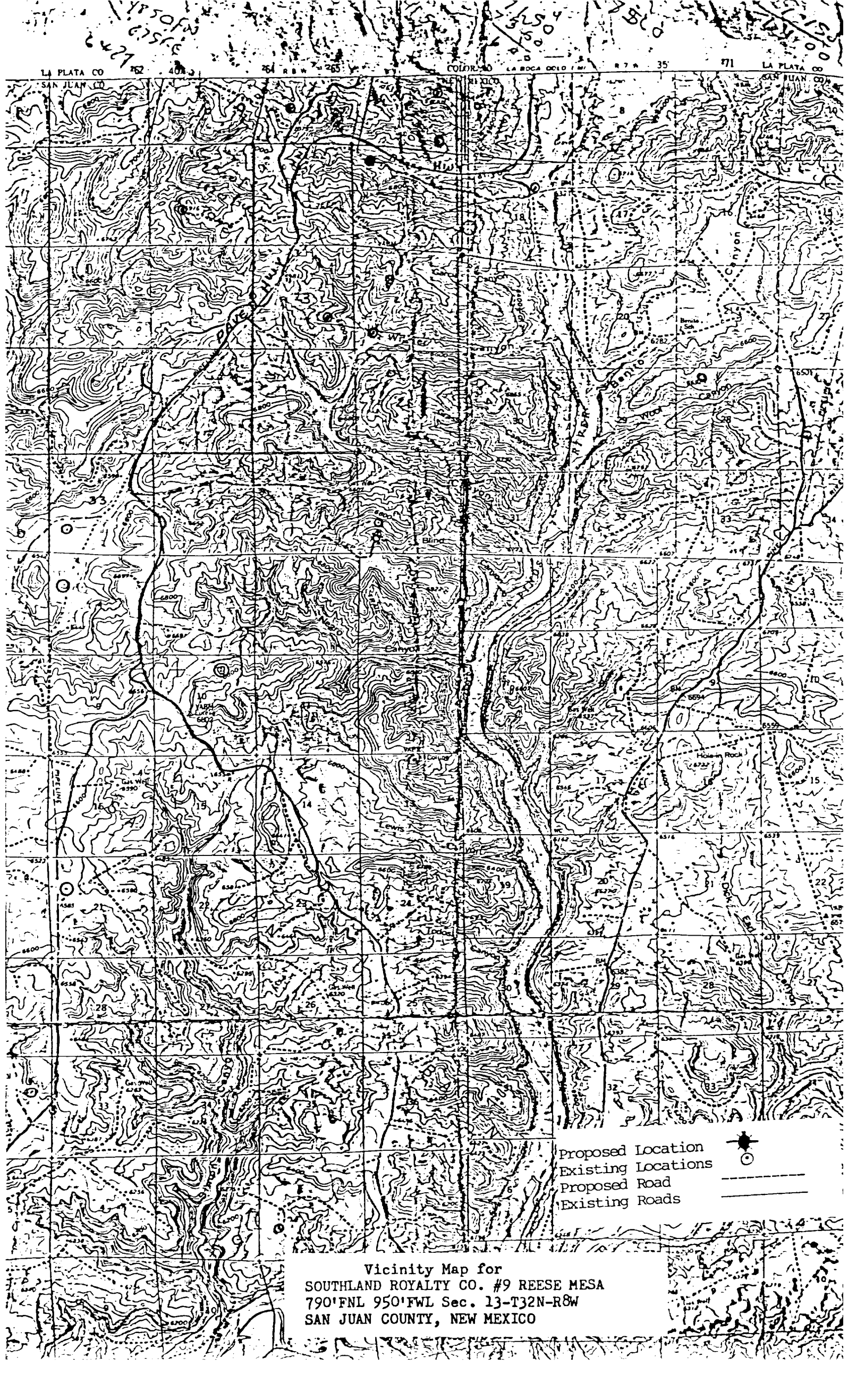
I hereby certify that I, or persons under my direct supervision, have inspected the proposed drillsite and access route; that I am familiar with the conditions which presently exist; that the statements made in this plan are, to the best of my knowledge, true and correct; and, that the work associated with the operations proposed herein will be performed by Southland Royalty Company and its contractors and subcontractors in conformity with this plan and the terms and conditions under which it is approved.

Date:



L. O. Van Ryan
District Production Manager

LOVR/ke



Vicinity Map for
SOUTHLAND ROYALTY CO. #9 REESE MESA
790'FNL 950'FWL Sec. 13-T32N-R8W
SAN JUAN COUNTY, NEW MEXICO