

UNITED STATES  
DEPARTMENT OF THE INTERIOR  
GEOLOGICAL SURVEY

## APPLICATION FOR PERMIT TO DRILL, DEEPEN, OR PLUG BACK

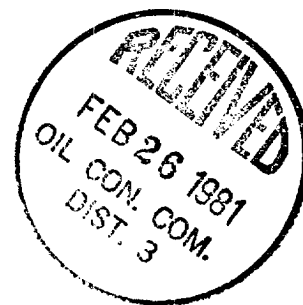
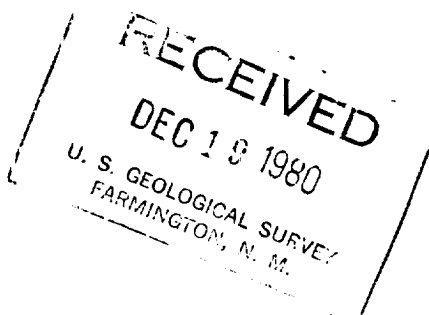
1a. TYPE OF WORK DRILL <input checked="" type="checkbox"/> DEEPEN <input type="checkbox"/> PLUG BACK <input type="checkbox"/>			5. LEASE DESIGNATION AND SERIAL NO. SF-078051		
b. TYPE OF WELL OIL WELL <input type="checkbox"/> GAS WELL <input checked="" type="checkbox"/> OTHER <input type="checkbox"/> SINGLE ZONE <input checked="" type="checkbox"/> MULTIPLE ZONE <input type="checkbox"/>			6. IF INDIAN, ALLOTTEE OR TRIBE NAME		
2. NAME OF OPERATOR Tenneco Oil Company			7. UNIT AGREEMENT NAME		
3. ADDRESS OF OPERATOR P.O. Box 3249, Englewood, Colorado 80155			8. FARM OR LEASE NAME Neal		
4. LOCATION OF WELL (Report location clearly and in accordance with any State requirements.)* At surface 2060 FNL, 1520 FWL At proposed prod. zone same as above			9. WELL NO. 2E		
14. DISTANCE IN MILES AND DIRECTION FROM NEAREST TOWN OR POST OFFICE* Approximately 7 miles North of Aztec, N.M.			10. FIELD AND POOL, OR WILDCAT Basin Dakota		
15. DISTANCE FROM PROPOSED* LOCATION TO NEAREST PROPERTY OR LEASE LINE, FT. (Also to nearest drlg. unit line, if any) 1020'			11. SEC., T., R., M., OR BLK. AND SURVEY OR AREA Sec. 4, T31N, R11W		
16. NO. OF ACRES IN LEASE 2218.66			12. COUNTY OR PARISH 13. STATE San Juan N.M.		
17. DISTANCE FROM PROPOSED LOCATION* TO NEAREST WELL, DRILLING, COMPLETED, OR APPLIED FOR, ON THIS LEASE, FT.			17. NO. OF ACRES ASSIGNED TO THIS WELL 320 w/309.35		
18. PROPOSED DEPTH ±7610			20. ROTARY OR CABLE TOOLS Rotary		
21. ELEVATIONS (Show whether DF, RT, GR, etc.) 6229' GR			22. APPROX. DATE WORK WILL START* February 1981		

## 23. PROPOSED CASING AND CEMENTING PROGRAM

SIZE OF HOLE	SIZE OF CASING	WEIGHT PER FOOT	SETTING DEPTH	QUANTITY OF CEMENT
12 1/4"	9 5/8" new	36#	±250	Circulate to surface
8 3/4"	7" new	23#	±3570	Circulate to surface
6 1/4"	4 1/2" new	11.6#, 10.5#	±7610	Circulate to liner top

See attached.

The gas is dedicated.



IN ABOVE SPACE DESCRIBE PROPOSED PROGRAM: If proposal is to deepen or plug back, give data on present productive zone and proposed new productive zone. If proposal is to drill or deepen directionally, give pertinent data on subsurface locations and measured and true vertical depths. Give blowout preventer program, if any.

24. SIGNED R. A. Mishler Sr. Production Analyst December 11, 1980  
TITLE R. A. Mishler DATE December 11, 1980

(This space for Federal or State office use)

APPROVED  
PERMIT NO. AS AMENDED APPROVAL DATE \_\_\_\_\_  
APPROVED BY JAMES F. SIMS TITLE \_\_\_\_\_ DATE \_\_\_\_\_  
CONDITIONS OF APPROVAL FEB 24 1981  
James F. Sims  
DISTRICT ENGINEER

\*See Instructions On Reverse Side

pwn 3-875

5/16/104 for NSU

al 3

All distances must be from the outer boundaries of the Section.

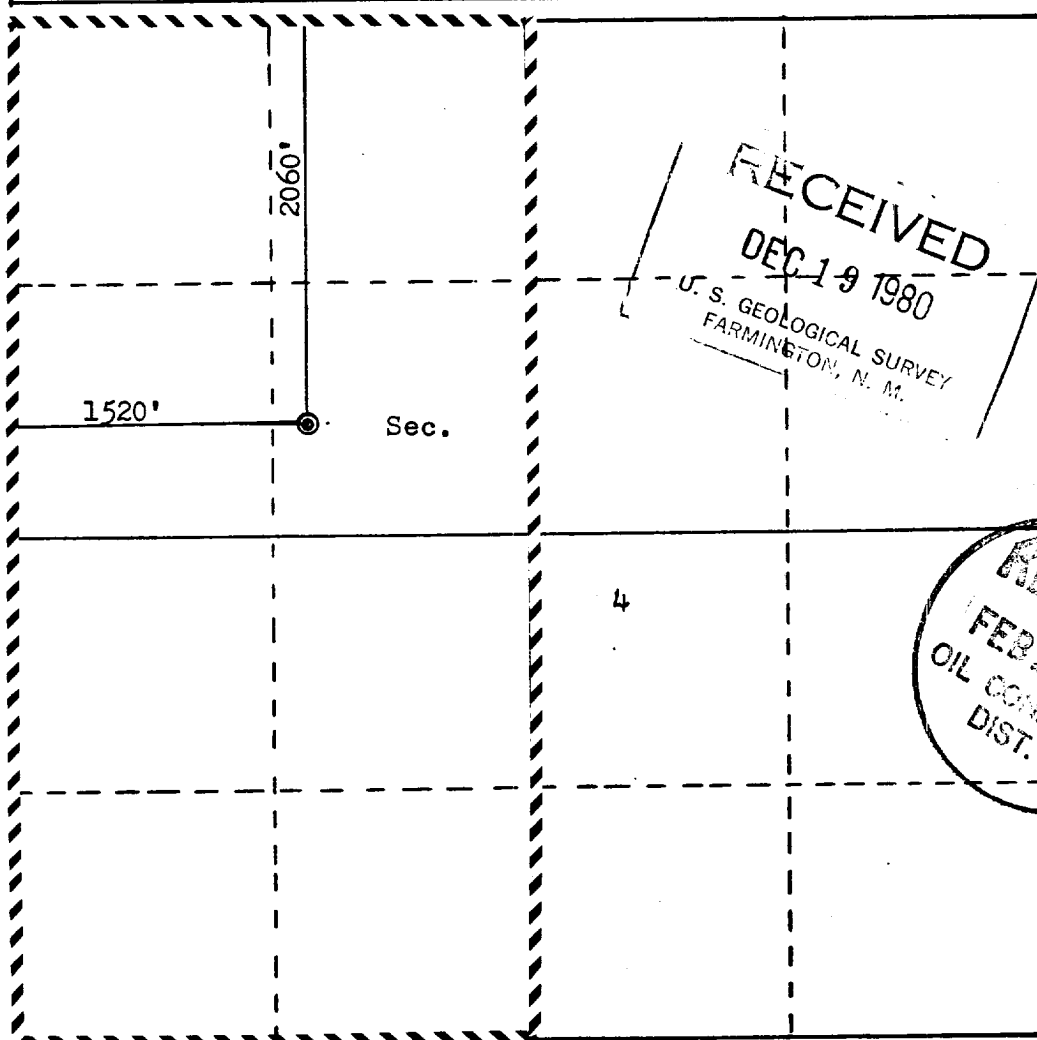
Operator <b>TENNECO OIL COMPANY</b>		Lease <b>NEAL</b>		Well No. <b>2E</b>
Unit Letter <b>F</b>	Section <b>4</b>	Township <b>31N</b>	Range <b>11W</b>	County <b>San Juan</b>
Actual Footage Location of Well: <b>2060</b> feet from the <b>North</b> line and <b>1520</b> feet from the <b>West</b> line				
Ground Level Elev: <b>6229</b>	Producing Formation <b>Dakota</b>	Pool <b>Basin Dakota</b>	Dedicated Acreage: <b>320</b> Acres	

1. Outline the acreage dedicated to the subject well by colored pencil or hatchure marks on the plat below.
2. If more than one lease is dedicated to the well, outline each and identify the ownership thereof (both as to working interest and royalty).
3. If more than one lease of different ownership is dedicated to the well, have the interests of all owners been consolidated by communitization, unitization, force-pooling, etc?

☐ Yes ☐ No If answer is "yes," type of consolidation \_\_\_\_\_

If answer is "no," list the owners and tract descriptions which have actually been consolidated. (Use reverse side of this form if necessary.) \_\_\_\_\_

No allowable will be assigned to the well until all interests have been consolidated (by communitization, unitization, forced-pooling, or otherwise) or until a non-standard unit, eliminating such interests, has been approved by the Commission.



Scale: 1"=1000'

CERTIFICATION

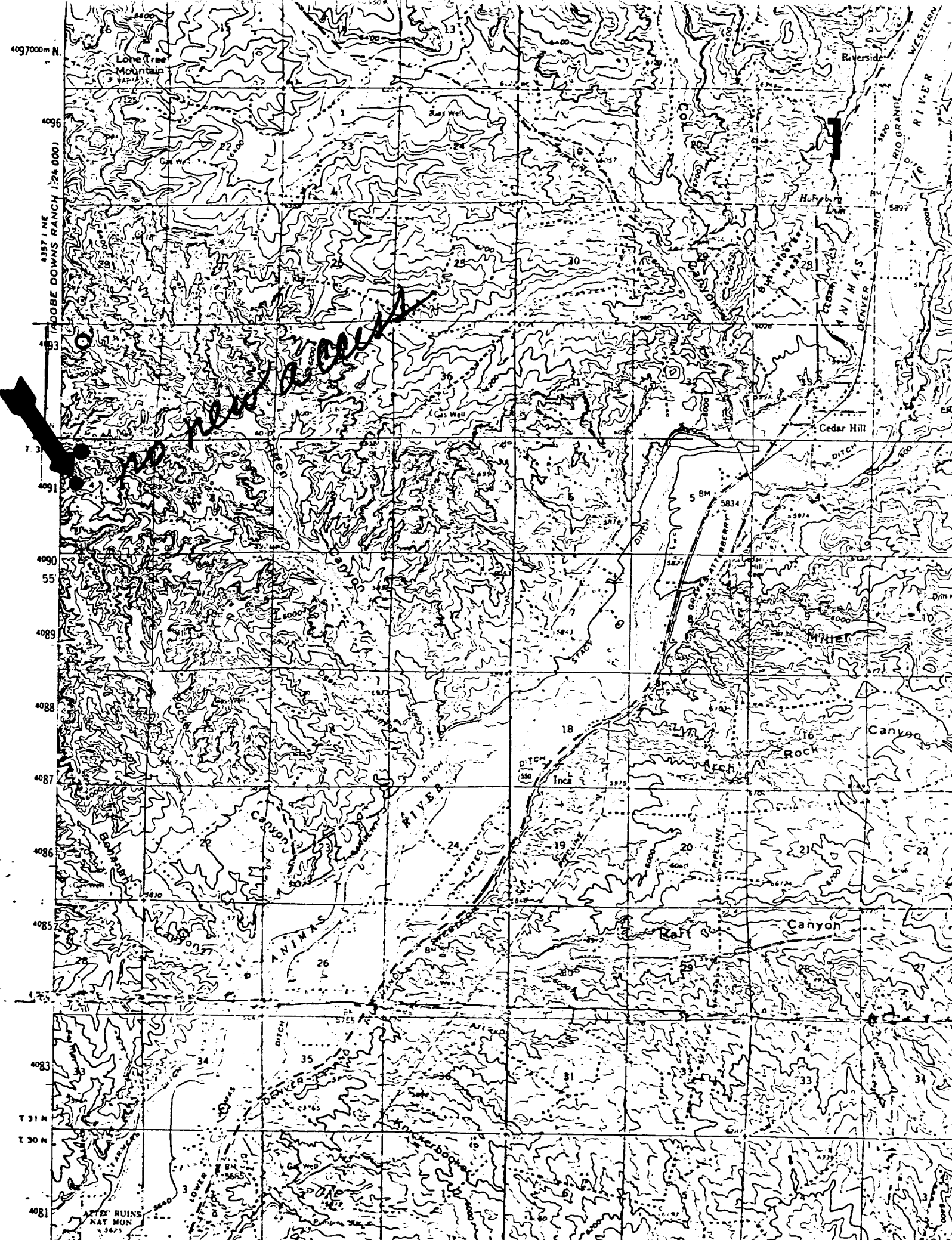
I hereby certify that the information contained herein is true and complete to the best of my knowledge and belief.

*R. A. Mishler*

Name **R. A. Mishler**  
Position **Sr. Production Analyst**  
Company **Tenneco Oil Company**  
Date **December 11, 1980**

I hereby certify that the well location shown on this plat was plotted from field notes of actual surveys made by me or under my supervision, and that the same is true and correct to the best of my knowledge and belief.

Date Surveyed **October 14, 1980**  
Registered Professional Engineer and Land Surveyor  
*Fred B. Kerr Jr.*  
Certificate No. **3950**



4097000m N  
4096  
4095  
4094  
4093  
4092  
4091  
4090  
4089  
4088  
4087  
4086  
4085  
4084  
4083  
4082  
4081  
T 31 N  
T 30 N

Lone Tree Mountain  
Riverside  
Holyoke  
Cedar Hill  
5 BM  
5834  
5821  
5820  
5819  
5818  
5817  
5816  
5815  
5814  
5813  
5812  
5811  
5810  
5809  
5808  
5807  
5806  
5805  
5804  
5803  
5802  
5801  
5800  
5799  
5798  
5797  
5796  
5795  
5794  
5793  
5792  
5791  
5790  
5789  
5788  
5787  
5786  
5785  
5784  
5783  
5782  
5781  
5780  
5779  
5778  
5777  
5776  
5775  
5774  
5773  
5772  
5771  
5770  
5769  
5768  
5767  
5766  
5765  
5764  
5763  
5762  
5761  
5760  
5759  
5758  
5757  
5756  
5755  
5754  
5753  
5752  
5751  
5750  
5749  
5748  
5747  
5746  
5745  
5744  
5743  
5742  
5741  
5740  
5739  
5738  
5737  
5736  
5735  
5734  
5733  
5732  
5731  
5730  
5729  
5728  
5727  
5726  
5725  
5724  
5723  
5722  
5721  
5720  
5719  
5718  
5717  
5716  
5715  
5714  
5713  
5712  
5711  
5710  
5709  
5708  
5707  
5706  
5705  
5704  
5703  
5702  
5701  
5700  
5699  
5698  
5697  
5696  
5695  
5694  
5693  
5692  
5691  
5690  
5689  
5688  
5687  
5686  
5685  
5684  
5683  
5682  
5681  
5680  
5679  
5678  
5677  
5676  
5675  
5674  
5673  
5672  
5671  
5670  
5669  
5668  
5667  
5666  
5665  
5664  
5663  
5662  
5661  
5660  
5659  
5658  
5657  
5656  
5655  
5654  
5653  
5652  
5651  
5650  
5649  
5648  
5647  
5646  
5645  
5644  
5643  
5642  
5641  
5640  
5639  
5638  
5637  
5636  
5635  
5634  
5633  
5632  
5631  
5630  
5629  
5628  
5627  
5626  
5625  
5624  
5623  
5622  
5621  
5620  
5619  
5618  
5617  
5616  
5615  
5614  
5613  
5612  
5611  
5610  
5609  
5608  
5607  
5606  
5605  
5604  
5603  
5602  
5601  
5600  
5599  
5598  
5597  
5596  
5595  
5594  
5593  
5592  
5591  
5590  
5589  
5588  
5587  
5586  
5585  
5584  
5583  
5582  
5581  
5580  
5579  
5578  
5577  
5576  
5575  
5574  
5573  
5572  
5571  
5570  
5569  
5568  
5567  
5566  
5565  
5564  
5563  
5562  
5561  
5560  
5559  
5558  
5557  
5556  
5555  
5554  
5553  
5552  
5551  
5550  
5549  
5548  
5547  
5546  
5545  
5544  
5543  
5542  
5541  
5540  
5539  
5538  
5537  
5536  
5535  
5534  
5533  
5532  
5531  
5530  
5529  
5528  
5527  
5526  
5525  
5524  
5523  
5522  
5521  
5520  
5519  
5518  
5517  
5516  
5515  
5514  
5513  
5512  
5511  
5510  
5509  
5508  
5507  
5506  
5505  
5504  
5503  
5502  
5501  
5500  
5499  
5498  
5497  
5496  
5495  
5494  
5493  
5492  
5491  
5490  
5489  
5488  
5487  
5486  
5485  
5484  
5483  
5482  
5481  
5480  
5479  
5478  
5477  
5476  
5475  
5474  
5473  
5472  
5471  
5470  
5469  
5468  
5467  
5466  
5465  
5464  
5463  
5462  
5461  
5460  
5459  
5458  
5457  
5456  
5455  
5454  
5453  
5452  
5451  
5450  
5449  
5448  
5447  
5446  
5445  
5444  
5443  
5442  
5441  
5440  
5439  
5438  
5437  
5436  
5435  
5434  
5433  
5432  
5431  
5430  
5429  
5428  
5427  
5426  
5425  
5424  
5423  
5422  
5421  
5420  
5419  
5418  
5417  
5416  
5415  
5414  
5413  
5412  
5411  
5410  
5409  
5408  
5407  
5406  
5405  
5404  
5403  
5402  
5401  
5400  
5399  
5398  
5397  
5396  
5395  
5394  
5393  
5392  
5391  
5390  
5389  
5388  
5387  
5386  
5385  
5384  
5383  
5382  
5381  
5380  
5379  
5378  
5377  
5376  
5375  
5374  
5373  
5372  
5371  
5370  
5369  
5368  
5367  
5366  
5365  
5364  
5363  
5362  
5361  
5360  
5359  
5358  
5357  
5356  
5355  
5354  
5353  
5352  
5351  
5350  
5349  
5348  
5347  
5346  
5345  
5344  
5343  
5342  
5341  
5340  
5339  
5338  
5337  
5336  
5335  
5334  
5333  
5332  
5331  
5330  
5329  
5328  
5327  
5326  
5325  
5324  
5323  
5322  
5321  
5320  
5319  
5318  
5317  
5316  
5315  
5314  
5313  
5312  
5311  
5310  
5309  
5308  
5307  
5306  
5305  
5304  
5303  
5302  
5301  
5300  
5299  
5298  
5297  
5296  
5295  
5294  
5293  
5292  
5291  
5290  
5289  
5288  
5287  
5286  
5285  
5284  
5283  
5282  
5281  
5280  
5279  
5278  
5277  
5276  
5275  
5274  
5273  
5272  
5271  
5270  
5269  
5268  
5267  
5266  
5265  
5264  
5263  
5262  
5261  
5260  
5259  
5258  
5257  
5256  
5255  
5254  
5253  
5252  
5251  
5250  
5249  
5248  
5247  
5246  
5245  
5244  
5243  
5242  
5241  
5240  
5239  
5238  
5237  
5236  
5235  
5234  
5233  
5232  
5231  
5230  
5229  
5228  
5227  
5226  
5225  
5224  
5223  
5222  
5221  
5220  
5219  
5218  
5217  
5216  
5215  
5214  
5213  
5212  
5211  
5210  
5209  
5208  
5207  
5206  
5205  
5204  
5203  
5202  
5201  
5200  
5199  
5198  
5197  
5196  
5195  
5194  
5193  
5192  
5191  
5190  
5189  
5188  
5187  
5186  
5185  
5184  
5183  
5182  
5181  
5180  
5179  
5178  
5177  
5176  
5175  
5174  
5173  
5172  
5171  
5170  
5169  
5168  
5167  
5166  
5165  
5164  
5163  
5162  
5161  
5160  
5159  
5158  
5157  
5156  
5155  
5154  
5153  
5152  
5151  
5150  
5149  
5148  
5147  
5146  
5145  
5144  
5143  
5142  
5141  
5140  
5139  
5138  
5137  
5136  
5135  
5134  
5133  
5132  
5131  
5130  
5129  
5128  
5127  
5126  
5125  
5124  
5123  
5122  
5121  
5120  
5119  
5118  
5117  
5116  
5115  
5114  
5113  
5112  
5111  
5110  
5109  
5108  
5107  
5106  
5105  
5104  
5103  
5102  
5101  
5100  
5099  
5098  
5097  
5096  
5095  
5094  
5093  
5092  
5091  
5090  
5089  
5088  
5087  
5086  
5085  
5084  
5083  
5082  
5081  
5080  
5079  
5078  
5077  
5076  
5075  
5074  
5073  
5072  
5071  
5070  
5069  
5068  
5067  
5066  
5065  
5064  
5063  
5062  
5061  
5060  
5059  
5058  
5057  
5056  
5055  
5054  
5053  
5052  
5051  
5050  
5049  
5048  
5047  
5046  
5045  
5044  
5043  
5042  
5041  
5040  
5039  
5038  
5037  
5036  
5035  
5034  
5033  
5032  
5031  
5030  
5029  
5028  
5027  
5026  
5025  
5024  
5023  
5022  
5021  
5020  
5019  
5018  
5017  
5016  
5015  
5014  
5013  
5012  
5011  
5010  
5009  
5008  
5007  
5006  
5005  
5004  
5003  
5002  
5001  
5000

no new access

