

OIL CONSERVATION DIVISION

P. O. BOX 2088

SANTA FE, NEW MEXICO 87501

Form C-107
Revised 10-1-78

STATE OF NEW MEXICO

ENERGY AND MINERALS DEPARTMENT

All distances must be from the outer boundaries of the Section.

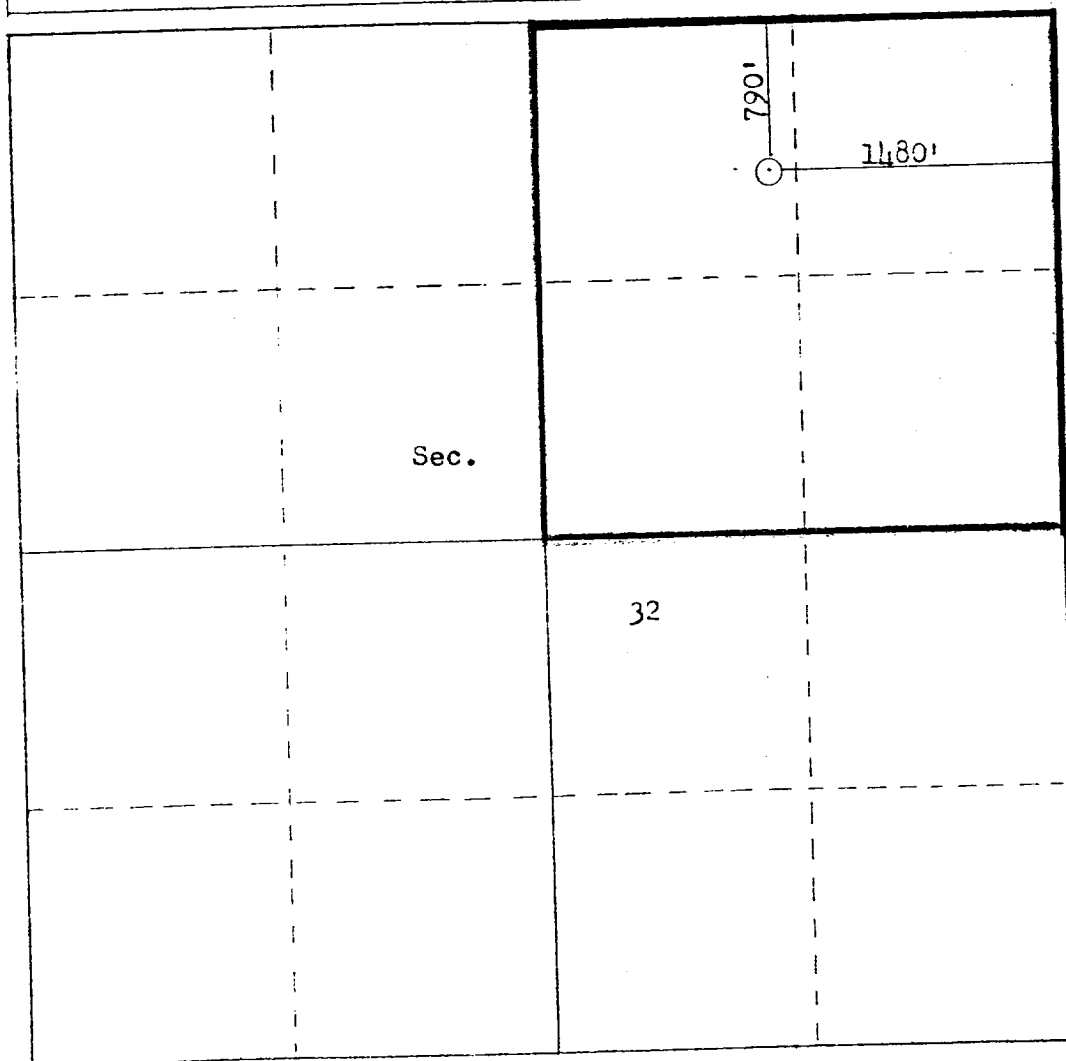
Operator AMOCO PRODUCTION COMPANY			Lease STATE GAS COM "EW"		Well No. 1
Unit Letter B	Section 32	Township 32N	Range 10W	County San Juan	
Actual Footage Location of Well: 790 feet from the North line and 1480 feet from the East line					
Ground Level Elev. 5919	Producing Formation Fruitland		Pool Undesignated Fruitland		Dedicated Acreage: 160 Acres

1. Outline the acreage dedicated to the subject well by colored pencil or hachure marks on the plat below.
2. If more than one lease is dedicated to the well, outline each and identify the ownership thereof (both as to working interest and royalty).
3. If more than one lease of different ownership is dedicated to the well, have the interests of all owners been consolidated by communitization, unitization, force-pooling, etc?

☐ Yes ☐ No If answer is "yes," type of consolidation _____

If answer is "no," list the owners and tract descriptions which have actually been consolidated. (Use reverse side of this form if necessary.) _____

No allowable will be assigned to the well until all interests have been consolidated (by communitization, unitization, forced-pooling, or otherwise) or until a non-standard unit, eliminating such interests, has been approved by the Commission.



Scale: 1"=1000'

CERTIFICATION

I hereby certify that the information contained herein is true and complete to the best of my knowledge and belief.

W. L. Peterson
Name
W. L. PETERSON
Per
MAR 26 1981
OIL CONSERVATION DIVISION
Company
AMOCO PRODUCTION COMPANY
Date
3/23/81

I hereby certify that the well location shown on this plat was plotted from field notes of actual surveys made by me or under my supervision, and that the same is true and correct to the best of my knowledge and belief.

Date Surveyed

March 18, 1981

Registered Professional Engineer
and Land Surveyor*Fred B. Kerr Jr.*
Fred B. Kerr Jr.

Certificate No.

3350

FORM 24-11