

UNITED STATES  
DEPARTMENT OF THE INTERIOR  
GEOLOGICAL SURVEY

## APPLICATION FOR PERMIT TO DRILL, DEEPEN, OR PLUG BACK

## 1a. TYPE OF WORK

DRILL ☒DEEPEN ☐PLUG BACK ☐

## b. TYPE OF WELL

OIL  
WELL ☐GAS  
WELL ☒

OTHER

SINGLE  
ZONE ☒MULTIPLE  
ZONE ☐

## 2. NAME OF OPERATOR

Southland Royalty Company

## 3. ADDRESS OF OPERATOR

P. O. Drawer 570, Farmington, New Mexico 87401

## 4. LOCATION OF WELL (Report location clearly and in accordance with any State requirements.)

At surface

1020' FSL &amp; 1610' FWL

At proposed prod. zone

## 14. DISTANCE IN MILES AND DIRECTION FROM NEAREST TOWN OR POST OFFICE\*

10 mile west of Aztec, New Mexico

## 15. DISTANCE FROM PROPOSED\*

LOCATION TO NEAREST  
PROPERTY OR LEASE LINE, FT.  
(Also to nearest drlg. unit line, if any)

1020'

## 16. NO. OF ACRES IN LEASE

2240.00

17. NO. OF ACRES ASSIGNED  
TO THIS WELL

320 w/318.79

18. DISTANCE FROM PROPOSED LOCATION\*  
TO NEAREST WELL, DRILLING, COMPLETED,  
OR APPLIED FOR, ON THIS LEASE, FT.

600'

## 19. PROPOSED DEPTH

7220'

## 20. ROTARY OR CABLE TOOLS

Rotary

## 21. ELEVATIONS (Show whether DF, RT, GR, etc.)

6039' GL

DRILLING PERMIT IS SUBJECT TO  
SUBJECT TO CONDITIONS ATTACHED

## 22. APPROX. DATE WORK WILL START\*

June 1, 1981

## 23. PROPOSED CASING AND CEMENTING PROGRAM

This action is subject to administrative

SIZE OF HOLE	SIZE OF CASING	WEIGHT PER FOOT	SETTING DEPTH	QUANTITY OF CEMENT
13-3/4"	10-3/4"	32.75#	200'	136 sxs - Circ to surface
9-7/8"	7-5/8"	26.40#	4750' Stge 1	170 sxs - Cover Cliff House
			Stge 2	310 sxs - Cover Ojo Alamo
6-3/4"	5-1/2"	15.5# & 17.0#	7220'	250 sxs - Circ to liner

Surface formation is Nacimiento.

Top of Ojo Alamo sand is at 1410'.

Top of Pictured Cliffs sand is at 2438'.

Fresh water mud will be used to drill from surface to intermediate total depth and air system from intermediate total depth to total depth.

It is anticipated that an IES will be run from intermediate total depth to surface casing, GR-Density from total depth to 1800' and GR-Induction from total depth to intermediate total depth.

No abnormal pressures or poisonous gases are anticipated in this well.

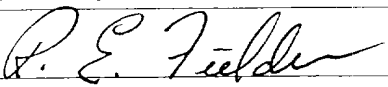
It is expected that this well will be drilled before September 1, 1981. This depends on time required for approvals, rig availability and the weather.

Gas is dedicated.

IN ABOVE SPACE DESCRIBE PROPOSED PROGRAM: If proposal is to deepen or plug back, give data on present productive zone and proposed new productive zone. If proposal is to drill or deepen directionally, give pertinent data on subsurface locations and measured and true vertical depths. Give blowout preventer program, if any.

24.

SIGNED



TITLE District Engineer

DATE April 8, 1981

(This space for Federal or State office use)

RECEIVED

PERMIT NO.

APPROVAL DATE

APPROVED BY

APR 13 1981

TITLE

CONDITIONS OF APPROVAL, IF ANY:

U. S. GEOLOGICAL SURVEY

APPROVED  
AS AMENDED

APR 29 1981

JAMES F. SIMS  
DISTRICT ENGINEER

## OIL CONSERVATION DIVISION

P. O. BOX 2088

Form C-107

Revised 10-1-78

STATE OF NEW MEXICO  
ENERGY AND MINERALS DEPARTMENT

SANTA FE, NEW MEXICO 87501

All distances must be from the outer boundaries of the Section.

Operator <b>SOUTHLAND ROYALTY COMPANY</b>			Lease <b>CULPEPPER-MARTIN</b>		Well No. <b>16E</b>
Unit Letter <b>N</b>	Section <b>4</b>	Township <b>31N</b>	Range <b>12W</b>	County <b>San Juan</b>	
Actual Footage Location of Well: <b>1020</b> feet from the <b>South</b> line and <b>1610</b> feet from the <b>West</b> line					
Ground Level Elev. <b>6039</b>	Producing Formation <b>Dakota</b>		Pool <b>Easin Dakota</b>		Dedicated Acreage: <b>320 5/8</b> Acres

1. Outline the acreage dedicated to the subject well by colored pencil or hachure marks on the plat below.
2. If more than one lease is dedicated to the well, outline each and identify the ownership thereof (both as to working interest and royalty).
3. If more than one lease of different ownership is dedicated to the well, have the interests of all owners been consolidated by communitization, unitization, force-pooling, etc?

☐ Yes ☐ No If answer is "yes," type of consolidation \_\_\_\_\_

If answer is "no," list the owners and tract descriptions which have actually been consolidated. (Use reverse side of this form if necessary.) \_\_\_\_\_

No allowable will be assigned to the well until all interests have been consolidated (by communitization, unitization, forced-pooling, or otherwise) or until a non-standard unit, eliminating such interests, has been approved by the Commission.

SF-078146

Sec. 4

1020'

1610'

Scale: 1"=1000'

## CERTIFICATION

I hereby certify that the information contained herein is true and complete to the best of my knowledge and belief.

*R. E. Fielder*

Name  
Robert E. Fielder

Position  
District Engineer

Company  
Southland Royalty Company

Date  
April 8, 1981

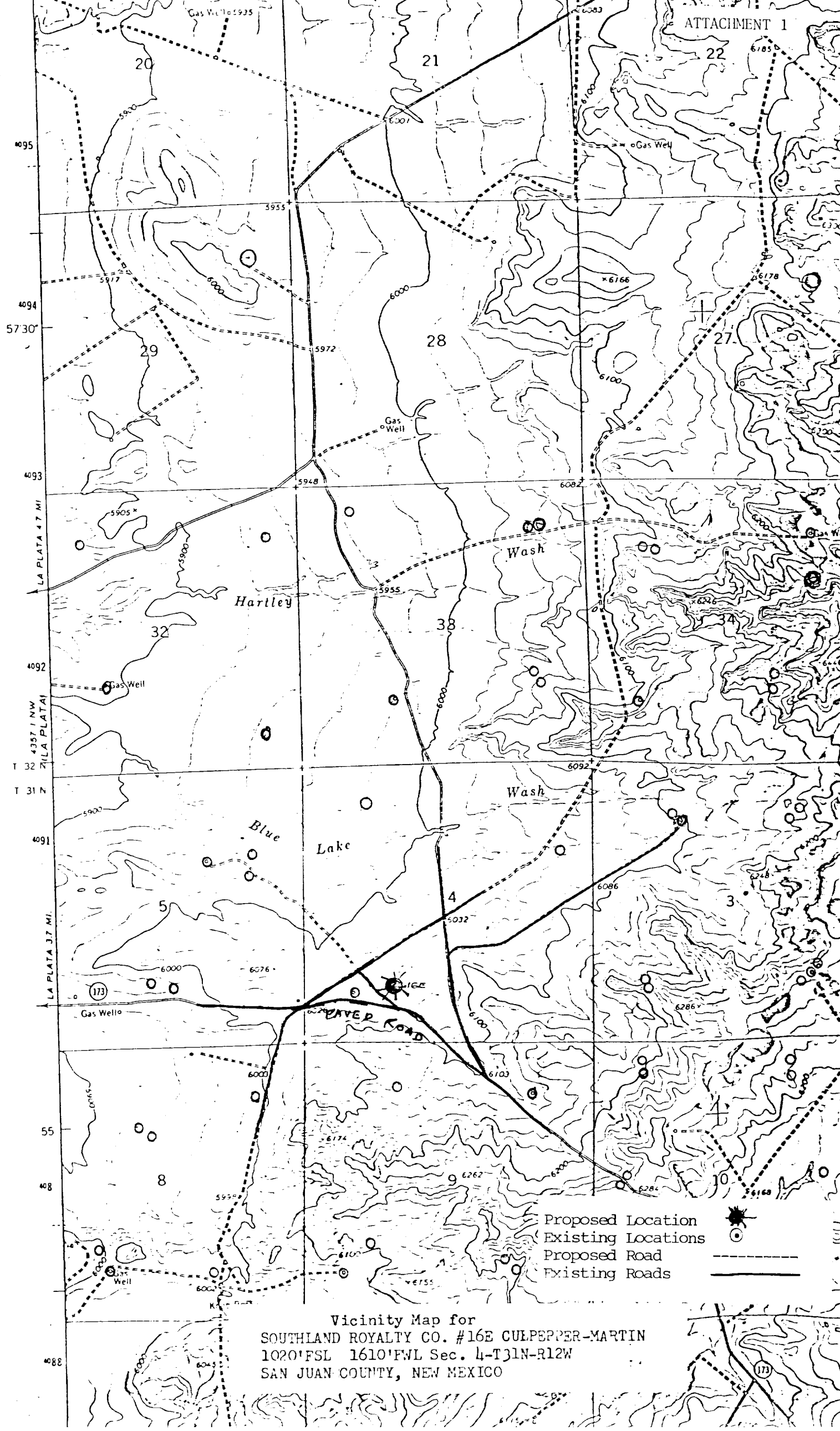
I hereby certify that the well location shown on this plat was plotted from field notes of actual surveys made by me or under my supervision, and that the same is true and correct to the best of my knowledge and belief.

Date Surveyed  
January 1981

Registered Professional Engineer  
and Land Surveyor

*Fred B. Kert*

Certificate No. 3950



Vicinity Map for  
SOUTHLAND ROYALTY CO. #16E CULPEPPER-MARTIN  
1020'FSL 1610'FWL Sec. 4-T31N-R12W  
SAN JUAN COUNTY, NEW MEXICO