

UNITED STATES
DEPARTMENT OF THE INTERIOR
GEOLOGICAL SURVEY

APPLICATION FOR PERMIT TO DRILL, DEEPEN, OR PLUG BACK

1a. TYPE OF WORK

DRILL ☒DEEPEN ☐PLUG BACK ☐

b. TYPE OF WELL

OIL
WELL ☐GAS
WELL ☒

OTHER

SINGLE
ZONE ☒MULTIPLE
ZONE ☐

2. NAME OF OPERATOR

Bixco, Inc., c/o K & A, Inc.

3. ADDRESS OF OPERATOR

2360 Anaconda Tower, 555-17th. Street, Denver, CO 80202

4. LOCATION OF WELL (Report location clearly and in accordance with any State requirements.*)

At surface

1,450' FSL and 1,140' FEL - Section 20-T32N-R8W

At proposed prod. zone

14. DISTANCE IN MILES AND DIRECTION FROM NEAREST TOWN OR POST OFFICE*

18 miles northwest of Navajo Lake State Park

15. DISTANCE FROM PROPOSED*

LOCATION TO NEAREST
PROPERTY OR LEASE LINE, FT.
(Also to nearest drlg. unit line, if any)

16. NO. OF ACRES IN LEASE

200

17. NO. OF ACRES ASSIGNED
TO THIS WELL

2/320

18. DISTANCE FROM PROPOSED LOCATION*
TO NEAREST WELL, DRILLING, COMPLETED,
OR APPLIED FOR, ON THIS LEASE, FT.

Only Well

19. PROPOSED DEPTH

5,900'

20. ROTARY OR CABLE TOOLS

Rotary

21. ELEVATIONS (Show whether DF, RT, GR, etc.)

6,357' GR

22. APPROX. DATE WORK WILL START*

July 15, 1979

23.

PROPOSED CASING AND CEMENTING PROGRAM

SIZE OF HOLE	SIZE OF CASING	WEIGHT PER FOOT	SETTING DEPTH	QUANTITY OF CEMENT
12 3/4"	8 5/8"	24#	300'	250 sx
7 7/8"	4 1/2"	10.5#	5,900'	700 sx

Operator proposes to drill to 5,900' to test the Mesa Verde Formation. The Wasach Formation is at the surface and the Pictured Cliffs is anticipated at 3,250', the Cliff House at 4,935', the Menefee at 5,300' and the Point Lookout at 5,645'. Gas production is to be from the Point Lookout. Pressure control equipment will be a double ram 10" - 900 Series (3,000 psi W.P.) blowout preventor tested to 1,000 psi before drilling from under surface pipe. A full opening drill pipe valve will be maintained on the floor. The well will be drilled with mud, with viscosity and weight controlled as required. A Dual Induction Laterolog will be run as the base log from TD to surface pipe. No abnormal temperature or pressure is anticipated. We plan to commence drilling on or about August, 1979.

gas is dedicated

IN ABOVE SPACE DESCRIBE PROPOSED PROGRAM: If proposal is to deepen or plug back, give data on present productive zone and proposed new productive zone. If proposal is to drill or deepen directionally, give pertinent data on subsurface locations and measured and true vertical depths. Give blowout preventer program, if any.

24.

SIGNED

W.E. Landry

TITLE

Asst. Mgr. Operations

DATE

May 29, 1979

(This space for Federal or State office use)

PERMIT NO.

APPROVAL DATE

APPROVED BY

TITLE

DATE

CONDITIONS OF APPROVAL, IF ANY:

Distribution: USGS - Orig. + 5 copies

K & A, Houston - 1

Mr. Spear - 1 copy

Bixco - 1 copy

File - 1

*See Instructions On Reverse Side

W.M.O.C.C.

All distances must be from the outer boundaries of the Section.

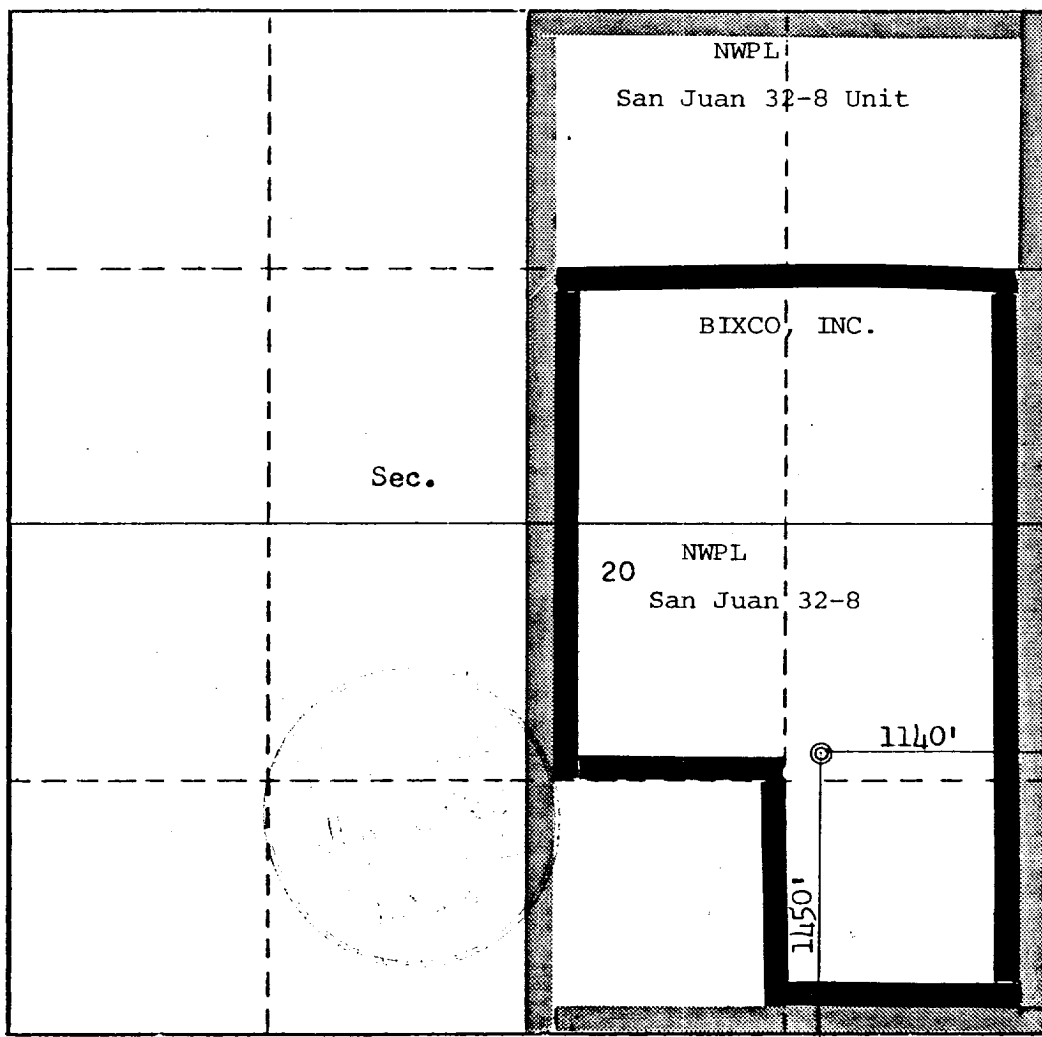
Operator BIXCO, INCORPORATED			Lease RATTLESNAKE CANYON		Well No. 1
Unit Letter I	Section 20	Township 32N	Range 8W	County San Juan	
Actual Footage Location of Well: 11450 feet from the South line and 1140 feet from the East line					
Ground Level Elev. 6357	Producing Formation Mesa Verde		Pool Blanco	Dedicated Acreage: 320 Acres	

1. Outline the acreage dedicated to the subject well by colored pencil or hachure marks on the plat below.
2. If more than one lease is dedicated to the well, outline each and identify the ownership thereof (both as to working interest and royalty).
3. If more than one lease of different ownership is dedicated to the well, have the interests of all owners been consolidated by communitization, unitization, force-pooling, etc?

☐ Yes ☒ No If answer is "yes," type of consolidation _____

If answer is "no," list the owners and tract descriptions which have actually been consolidated. (Use reverse side of this form if necessary.) Northwest Pipeline Corp.

No allowable will be assigned to the well until all interests have been consolidated (by communitization, unitization, forced-pooling, or otherwise) or until a non-standard unit, eliminating such interests, has been approved by the Commission.



CERTIFICATION

I hereby certify that the information contained herein is true and complete to the best of my knowledge and belief.

Name

W. E. Landry

Position

Asst. Mgr. Operations

Company

K & A, Inc.

Date

May 29, 1979

I hereby certify that the well location shown on this plat was plotted from field notes of actual surveys made by me or under my supervision, and that the same is true and correct to the best of my knowledge and belief.

Date Surveyed

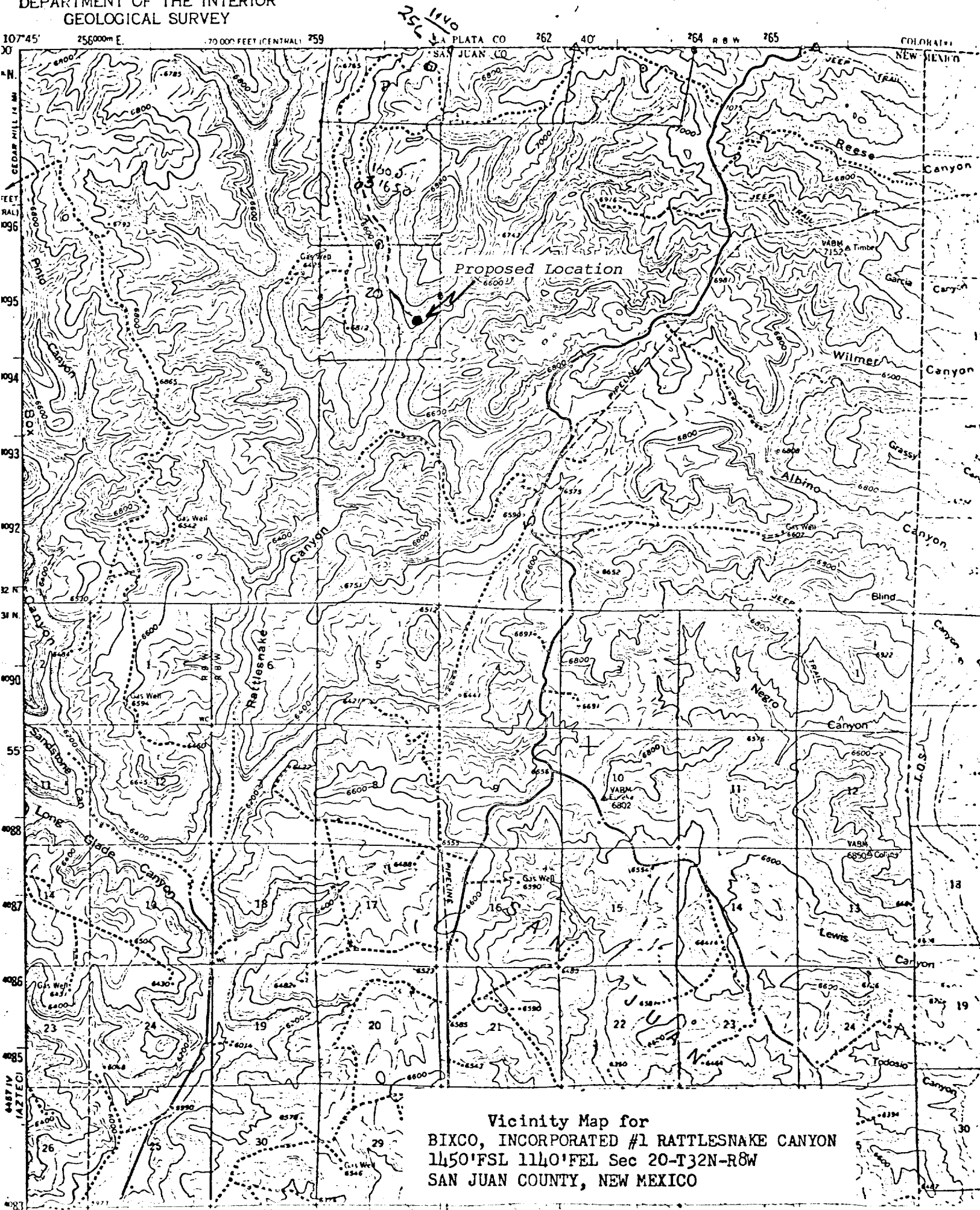
May 29, 1979

Registered Professional Engineer and/or Land Surveyor

Fred B. Kerr Jr.

Certificate No. 3950

UNITED STATES
DEPARTMENT OF THE INTERIOR
GEOLOGICAL SURVEY



107°45' 256000m E. 70000' FEET (CENTRAL) 259 262 40' 264 R B W 265

SA PLATA CO 40' 264 R B W 265

NEW MEXICO

Reese Canyon

Wilmer Canyon

Grassy Canyon

Albino Canyon

Blind Canyon

Negro Canyon

Lewis Canyon

Todoa Canyon

Rattlesnake Canyon

Lone Glade Canyon

Gas Well 6542

Gas Well 6594

Gas Well 6590

Gas Well 6546

Gas Well 6548

Gas Well 6549

Gas Well 6550

Gas Well 6551

Gas Well 6552

Gas Well 6553

Gas Well 6554

Gas Well 6555

Gas Well 6556

Gas Well 6557

Gas Well 6558

Gas Well 6559

Gas Well 6560

Gas Well 6561

Gas Well 6562

Gas Well 6563

Gas Well 6564

Gas Well 6565

Gas Well 6566

Gas Well 6567

Gas Well 6568

Gas Well 6569

Gas Well 6570

Gas Well 6571

Gas Well 6572

Gas Well 6573

Gas Well 6574

Gas Well 6575

Gas Well 6576

Gas Well 6577

Gas Well 6578

Gas Well 6579

Gas Well 6580

Gas Well 6581

Gas Well 6582

Gas Well 6583

Gas Well 6584

Gas Well 6585

Gas Well 6586

Gas Well 6587

Gas Well 6588

Gas Well 6589

Gas Well 6590

Gas Well 6591

Gas Well 6592

Gas Well 6593

Gas Well 6594

Gas Well 6595

Gas Well 6596

Gas Well 6597

Gas Well 6598

Gas Well 6599

Gas Well 6600

Gas Well 6601

Gas Well 6602

Gas Well 6603

Gas Well 6604

Gas Well 6605

Gas Well 6606

Gas Well 6607

Gas Well 6608

Gas Well 6609

Gas Well 6610

Gas Well 6611

Gas Well 6612

Gas Well 6613

Gas Well 6614

Gas Well 6615

Gas Well 6616

Gas Well 6617

Gas Well 6618

Gas Well 6619

Gas Well 6620

Gas Well 6621

Gas Well 6622

Gas Well 6623

Gas Well 6624

Gas Well 6625

Gas Well 6626

Gas Well 6627

Gas Well 6628

Gas Well 6629

Gas Well 6630

Gas Well 6631

Gas Well 6632

Gas Well 6633

Gas Well 6634

Gas Well 6635

Gas Well 6636

Gas Well 6637

Gas Well 6638

Gas Well 6639

Gas Well 6640

Gas Well 6641

Gas Well 6642

Gas Well 6643

Gas Well 6644

Gas Well 6645

Gas Well 6646

Gas Well 6647

Gas Well 6648

Gas Well 6649

Gas Well 6650

Gas Well 6651

Gas Well 6652

Gas Well 6653

Gas Well 6654

Gas Well 6655

Gas Well 6656

Gas Well 6657

Gas Well 6658

Gas Well 6659

Gas Well 6660

Gas Well 6661

Gas Well 6662

Gas Well 6663

Gas Well 6664

Gas Well 6665

Gas Well 6666

Gas Well 6667

Gas Well 6668

Gas Well 6669

Gas Well 6670

Gas Well 6671

Gas Well 6672

Gas Well 6673

Gas Well 6674

Gas Well 6675

Gas Well 6676

Gas Well 6677

Gas Well 6678

Gas Well 6679

Gas Well 6680

Gas Well 6681

Gas Well 6682

Gas Well 6683

Gas Well 6684

Gas Well 6685

Gas Well 6686

Gas Well 6687

Gas Well 6688

Gas Well 6689

Gas Well 6690

Gas Well 6691

Gas Well 6692

Gas Well 6693

Gas Well 6694

Gas Well 6695

Gas Well 6696

Gas Well 6697

Gas Well 6698

Gas Well 6699

Gas Well 6700

Gas Well 6701

Gas Well 6702

Gas Well 6703

Gas Well 6704

Gas Well 6705

Gas Well 6706

Gas Well 6707

Gas Well 6708

Gas Well 6709

Gas Well 6710

Gas Well 6711

Gas Well 6712

Gas Well 6713

Gas Well 6714

Gas Well 6715

Gas Well 6716

Gas Well 6717

Gas Well 6718

Gas Well 6719

Gas Well 6720

Gas Well 6721

Gas Well 6722

Gas Well 6723

Gas Well 6724

Gas Well 6725

Gas Well 6726

Gas Well 6727

Gas Well 6728

Gas Well 6729

Gas Well 6730

Gas Well 6731

Gas Well 6732

Gas Well 6733

Gas Well 6734

Gas Well 6735

Gas Well 6736

Gas Well 6737

Gas Well 6738

Gas Well 6739

Gas Well 6740

Gas Well 6741

Gas Well 6742

Gas Well 6743

Gas Well 6744

Gas Well 6745

Gas Well 6746

Gas Well 6747

Gas Well 6748

Gas Well 6749

Gas Well 6750

Gas Well 6751

Gas Well 6752

Gas Well 6753

Gas Well 6754

Gas Well 6755

Gas Well 6756

Gas Well 6757

Gas Well 6758

Gas Well 6759

Gas Well 6760

Gas Well 6761

Gas Well 6762

Gas Well 6763

Gas Well 6764

Gas Well 6765

Gas Well 6766

Gas Well 6767

Gas Well 6768

Gas Well 6769

Gas Well 6770

Gas Well 6771

Gas Well 6772

Gas Well 6773

Gas Well 6774

Gas Well 6775

Gas Well 6776

Gas Well 6777

Gas Well 6778

Gas Well 6779

Gas Well 6780

Gas Well 6781

Gas Well 6782

Gas Well 6783

Gas Well 6784

Gas Well 6785

Gas Well 6786

Gas Well 6787

Gas Well 6788

Gas Well 6789

Gas Well 6790

Gas Well 6791

Gas Well 6792

Gas Well 6793

Gas Well 6794

Gas Well 6795

Gas Well 6796

Gas Well 6797

Gas Well 6798

Gas Well 6799

Gas Well 6800

Gas Well 6801

Gas Well 6802

Gas Well 6803

Gas Well 6804

Gas Well 6805

Gas Well 6806

Gas Well 6807

Gas Well 6808

Gas Well 6809

Gas Well 6810

Gas Well 6811

Gas Well 6812

Gas Well 6813

Gas Well 6814

Gas Well 6815

Gas Well 6816

Gas Well 6817

Gas Well 6818

Gas Well 6819

Gas Well 6820

Gas Well 6821

Gas Well 6822

Gas Well 6823

Gas Well 6824

Gas Well 6825

Gas Well 6826

Gas Well 6827

Gas Well 6828

Gas Well 6829

Gas Well 6830

Gas Well 6831

Gas Well 6832

Gas Well 6833

Gas Well 6834

Gas Well 6835

Gas Well 6

Vicinity Map for
BIXCO, INCORPORATED #1 RATTLESNAKE CANYON
1450'FSL 1140'FEL Sec 20-T32N-R8W
SAN JUAN COUNTY, NEW MEXICO

UNITED STATES
DEPARTMENT OF THE INTERIOR
GEOLOGICAL SURVEY



Vicinity Map for
BIXCO, INCORPORATED #1 RATTLESNAKE CANYON
1450'FSL 1140'FEL Sec 20-T32N-R3W
SAN JUAN COUNTY, NEW MEXICO

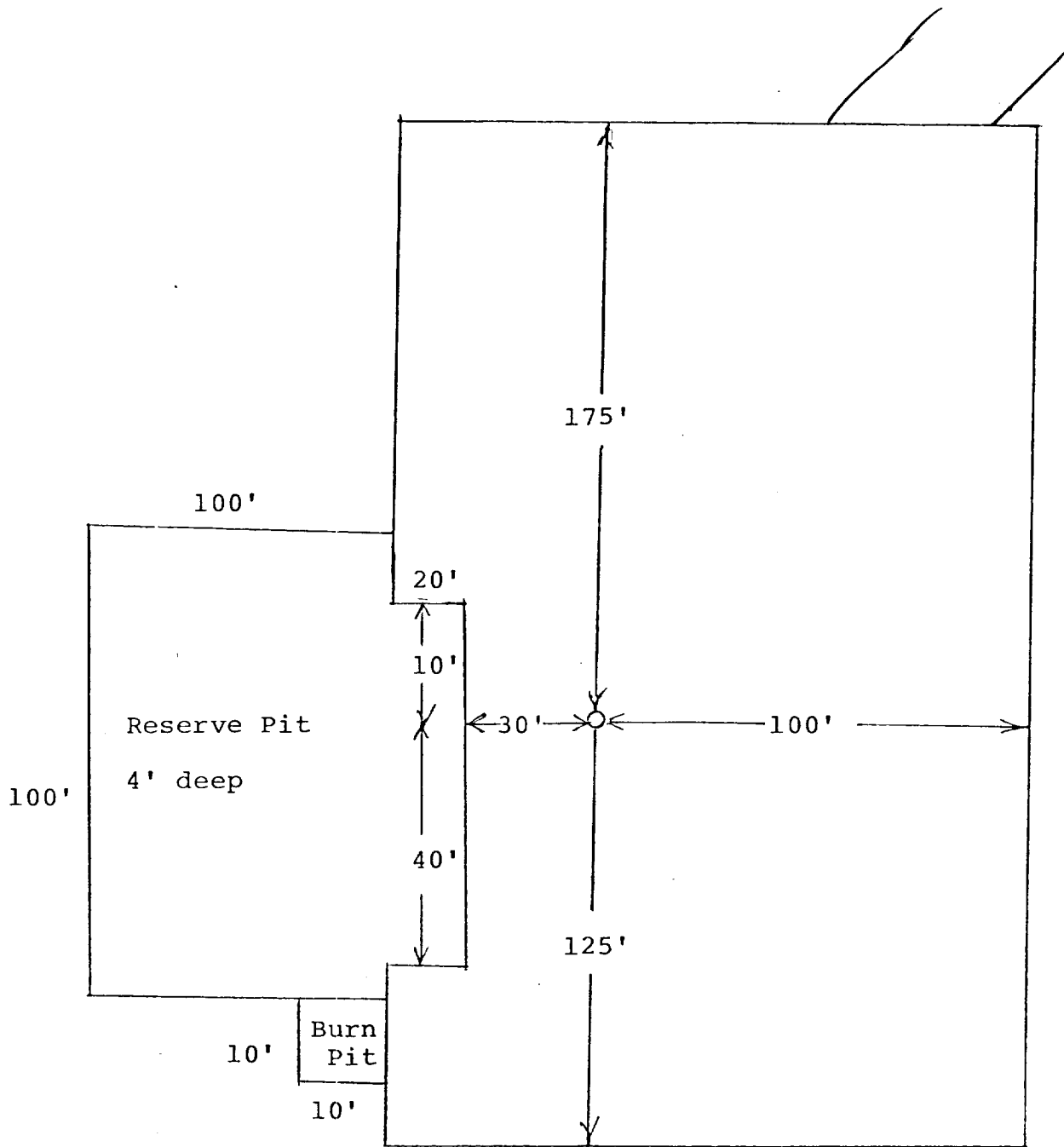
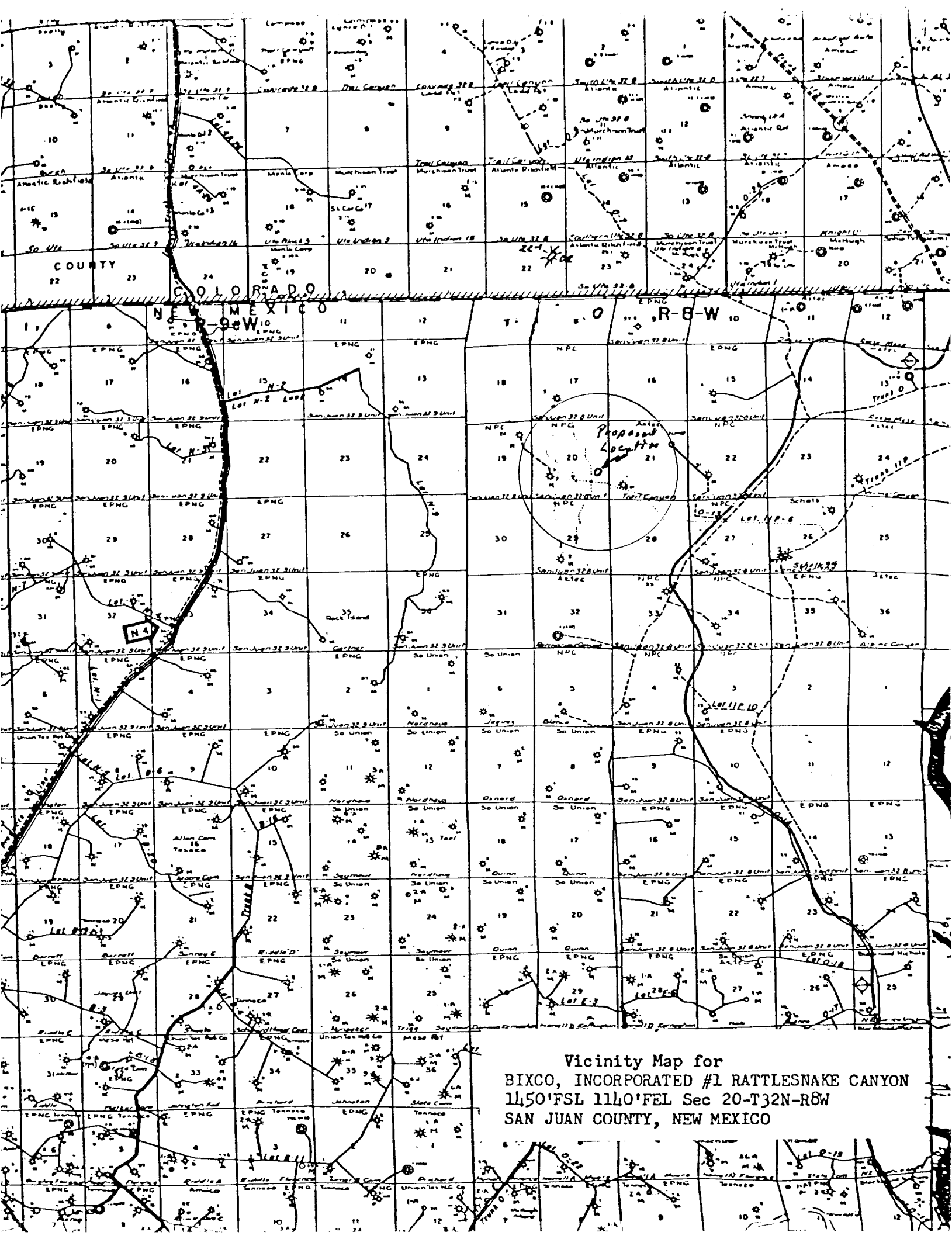


DIAGRAM OF WELL LOCATION

[Handwritten signature]



Vicinity Map for
BIXCO, INCORPORATED #1 RATTLESNAKE CANYON
11450' FSL 1140' FEL Sec 20-T32N-R8W
SAN JUAN COUNTY, NEW MEXICO

SURFACE USE AND OPERATIONS PLAN

BIXCO, INC.

RATTLESNAKE CANYON WELL NO. 1

SECTION 20-T32N-R8W

SAN JUAN COUNTY, NEW MEXICO

1. Existing Roads are New Mexico State Highway 511 from Navajo Dam toward Igancio, Colorado, and the service road from a point approximately 1 mile south of the Colorado-New Mexico border to the Northwest Pipeline Corporation San Juan 32-8 Unit Well No. 3 in the west half of Section 17-T32N-R8W. These are shown on the topographic vicinity map attached to the Form 9-331C
2. Planned Access Roads to the location will follow the canyon from the above San Juan Unit 32-8 Well No. 3 for 1 1/4 miles and then angle up to the location.
3. The locations of existing wells are shown on the attached vicinity map.
4. Location of Tank Batteries, Production Facilities and Production Gathering and Service Lines. No tank battery is proposed. Production facilities will consist of a horizontal separator on location, a safe distance from the wellhead. Gathering lines and meter station will be the responsibility of the connecting pipeline, Northwest Pipeline, approximately 200 feet to the south of the well location.

5. Water Supply

Water will be hauled to location from the San Juan River as it passes through the La Boca Ranch in La Plata County, Colorado.

6. Source of Construction Materials

Not applicable.

7. Methods of Handling Waste Disposal

All garbage and trash that can be burned shall be burned. All trash that cannot be burned will be contained in a trash pit and covered with a minimum of 4 feet of cover. All production waste such as cuttings, chemicals, overflows of oil, water, and drilling fluids shall be contained in the reserve pit and on completion of drilling activities buried with a minimum of 4 feet of cover. The reserve pit will be fenced until cleanup operations are commenced. A portable toilet will be provided for human waste.

8. Ancillary Facilities

There are no ancillary facilities planned for this location.

9. Wellsite Layout

See attached location layout plat.

10. Plans for Restoration of the Surface

Cleanup of the well location will commence immediately following the removal of the drilling equipment. The reserve pit will be fenced until restoration operations are commenced. The well location will be returned to approximate natural contour and the access road will be returned to original contour if the well is not productive. Both the road and the location will be restored and reseeded in accordance with BLM specifications.

11. Other Information

Impact on the environment will be minimal. The access road and well location is sparsely vegetated and minimal disturbance will be required.

12. Operator's Representative

K & A, Inc.
2360 Anaconda Tower
555 - 17th. Street
Denver, CO 80202

13. Certification

I hereby certify that I have inspected the proposed drillsite and access route; that I am familiar with the conditions which presently exist; that the statements made in this plan are, to the best of my knowledge, true and correct; and that the work associated with the operations proposed herein will be performed by Bixco, Inc. and its contractors and sub-contractors in conformity with this plan and the terms and conditions under which it is approved.

5-29-79
(Date)


W.E. Landry - Asst. Mgr. Operations

K & A, Inc.
(Company)