

UNITED STATES
DEPARTMENT OF THE INTERIOR
GEOLOGICAL SURVEY

30-045-25239

APPLICATION FOR PERMIT TO DRILL, DEEPEN, OR PLUG BACK

1a. TYPE OF WORK
DRILL ☒ DEEPEN ☐ PLUG BACK ☐

b. TYPE OF WELL
OIL WELL ☒ GAS WELL ☐ OTHER ☐ SINGLE ZONE ☒ MULTIPLE ZONE ☐

2. NAME OF OPERATOR
B.O.A. Oil & Gas Company

3. ADDRESS OF OPERATOR
3539 East 30th Street, Suite 108, Farmington, NM 87401

4. LOCATION OF WELL (Report location clearly and in accordance with any State requirements.)
At surface
1090' FNL & 2480' FEL
At proposed prod. zone

14. DISTANCE IN MILES AND DIRECTION FROM NEAREST TOWN OR POST OFFICE*
Waterflow, New Mexico - 8 Miles

15. DISTANCE FROM PROPOSED* LOCATION TO NEAREST PROPERTY OR LEASE LINE, FT.
(Also to nearest drlg. unit lhp, if any)

16. NO. OF ACRES IN LEASE
2560

17. NO. OF ACRES ASSIGNED TO THIS WELL
40

18. DISTANCE FROM PROPOSED LOCATION* TO NEAREST WELL, DRILLING COMPLETED, OR APPLIED FOR, ON THIS LEASE, FT.
2000

19. PROPOSED DEPTH
2000

20. ROTARY OR CABLE TOOLS
Rotary & Cable Tools

21. ELEVATIONS (Show whether DF, RT, GR, etc.)
5433

22. APPROX. DATE WORK WILL START*
11-1-81

5. LEASE DESIGNATION AND SERIAL NO.
14-20-604-90

6. IF INDIAN, ALLOTTEE OR TRIBE NAME
Ute Mountain

7. UNIT AGREEMENT NAME

8. FARM OR LEASE NAME
Ute "B"

9. WELL NO.
21

10. FIELD AND POOL, OR WILDCAT
Verde Gallup

11. SEC., T., R., M., OR BLK. AND SURVEY OR AREA
B
31-31N-15W

12. COUNTY OR PARISH
San Juan

13. STATE
New Mex.

PROPOSED CASING AND CEMENTING PROGRAM

SIZE OF HOLE	SIZE OF CASING	WEIGHT PER FOOT	SETTING DEPTH	QUANTITY OF CEMENT
12 3/4	8 5/8	20	100	75 sacks
6 3/4	5 1/2	14	1600	175 sacks 2% CACL
4 1/4	Open Hole		1800	



IN ABOVE SPACE DESCRIBE PROPOSED PROGRAM: If proposal is to deepen or plug back, give data on present productive zone and proposed new productive zone. If proposal is to drill or deepen directionally, give pertinent data on subsurface locations and measured and true vertical depths. Give blowout preventer program, if any.

24. SIGNED Paul E. Bodenberger TITLE Operator DATE 10-20-81
(This space for Federal or State office use)

PERMIT NO. _____ APPROVAL DATE _____
Original Signed - Paul E. Bodenberger JOHN L. PRICE
APPROVED BY _____ DISTRICT SUPERVISOR
CONDITIONS OF APPROVAL, IF ANY: _____ DATE NOV 6 1981

"APPROVAL TO PLANE GRANTED
WHILE DRILLING AND TESTING"

STIPULATIONS
ATTACHED

APPROVED FOR A PERIOD
NOT TO EXCEED 1 YEAR.

N.M. Oil & Gas Well 1046251

U. S. GEOLOGICAL SURVEY
OIL AND GAS OPERATIONS
RECEIVED

OCT 29 1981

GRAND JUNCTION, COLORADO

NEW MEXICO OIL CONSERVATION COMMISSION
WELL LOCATION AND ACREAGE DEDICATION PLAT

Form C-102
Supersedes C-128
Effective 1-1-65

All distances must be from the outer boundaries of the Section.

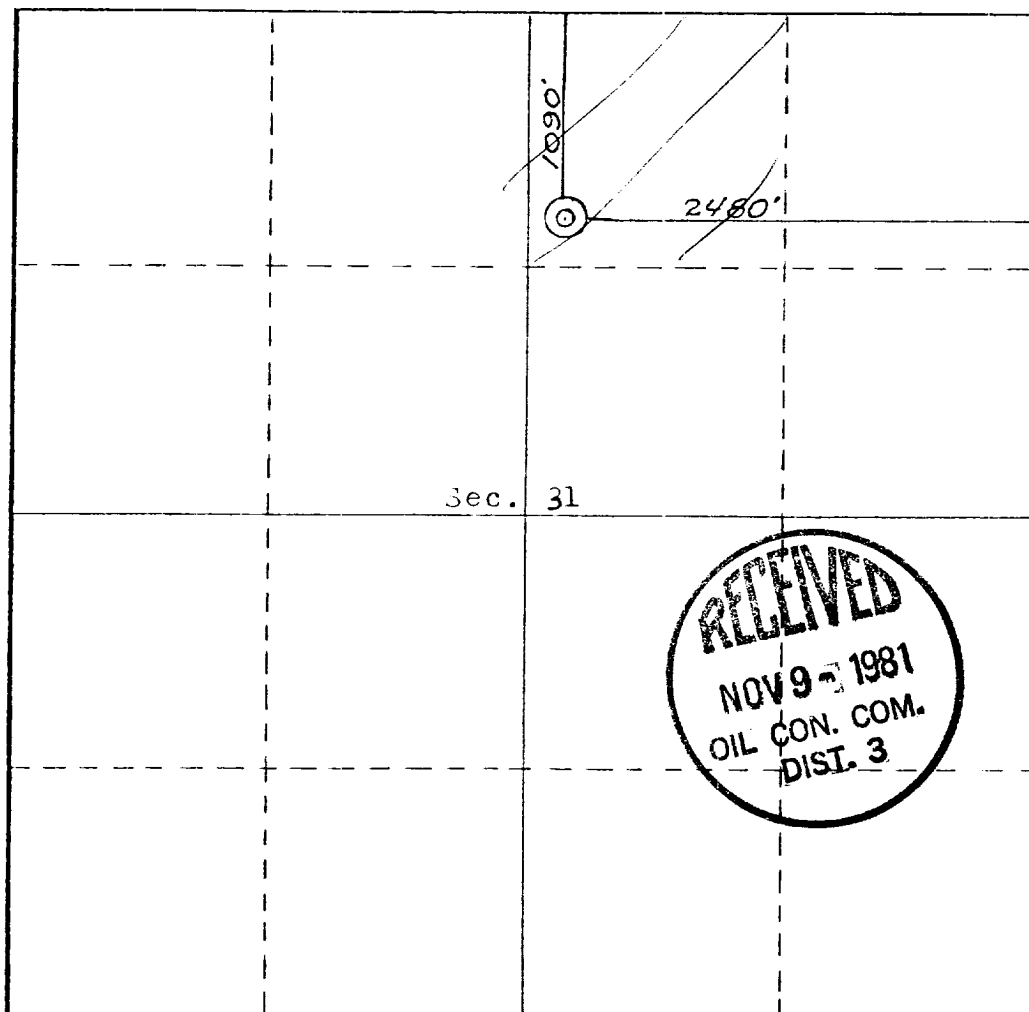
Operator B. O. A. OIL & GAS		Lease		Well No. 21
Unit Letter B	Section 31	Township 31 NORTH	Range 15 WEST	County SAN JUAN
Actual Footage Location of Well: 1090 feet from the NORTH line and 2480 feet from the EAST line				
Ground Level Elev. 5433	Producing Formation Gallup	Pool Verde Gallup	Dedicated Acreage: 40 Acres	

1. Outline the acreage dedicated to the subject well by colored pencil or hachure marks on the plat below.
2. If more than one lease is dedicated to the well, outline each and identify the ownership thereof (both as to working interest and royalty).
3. If more than one lease of different ownership is dedicated to the well, have the interests of all owners been consolidated by communitization, unitization, force-pooling, etc?

☐ Yes ☐ No If answer is "yes;" type of consolidation _____

If answer is "no," list the owners and tract descriptions which have actually been consolidated. (Use reverse side of this form if necessary.) _____

No allowable will be assigned to the well until all interests have been consolidated (by communitization, unitization, forced-pooling, or otherwise) or until a non-standard unit, eliminating such interests, has been approved by the Commission.



CERTIFICATION

I hereby certify that the information contained herein is true and complete to the best of my knowledge and belief.

Ralph C. Stockett
Name

General Partner

Position

B.O.A. Oil & Gas Co.

Company

October 26, 1981

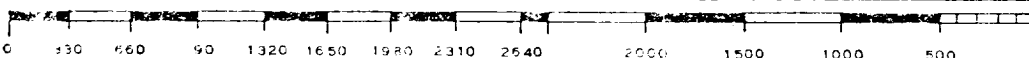
Date

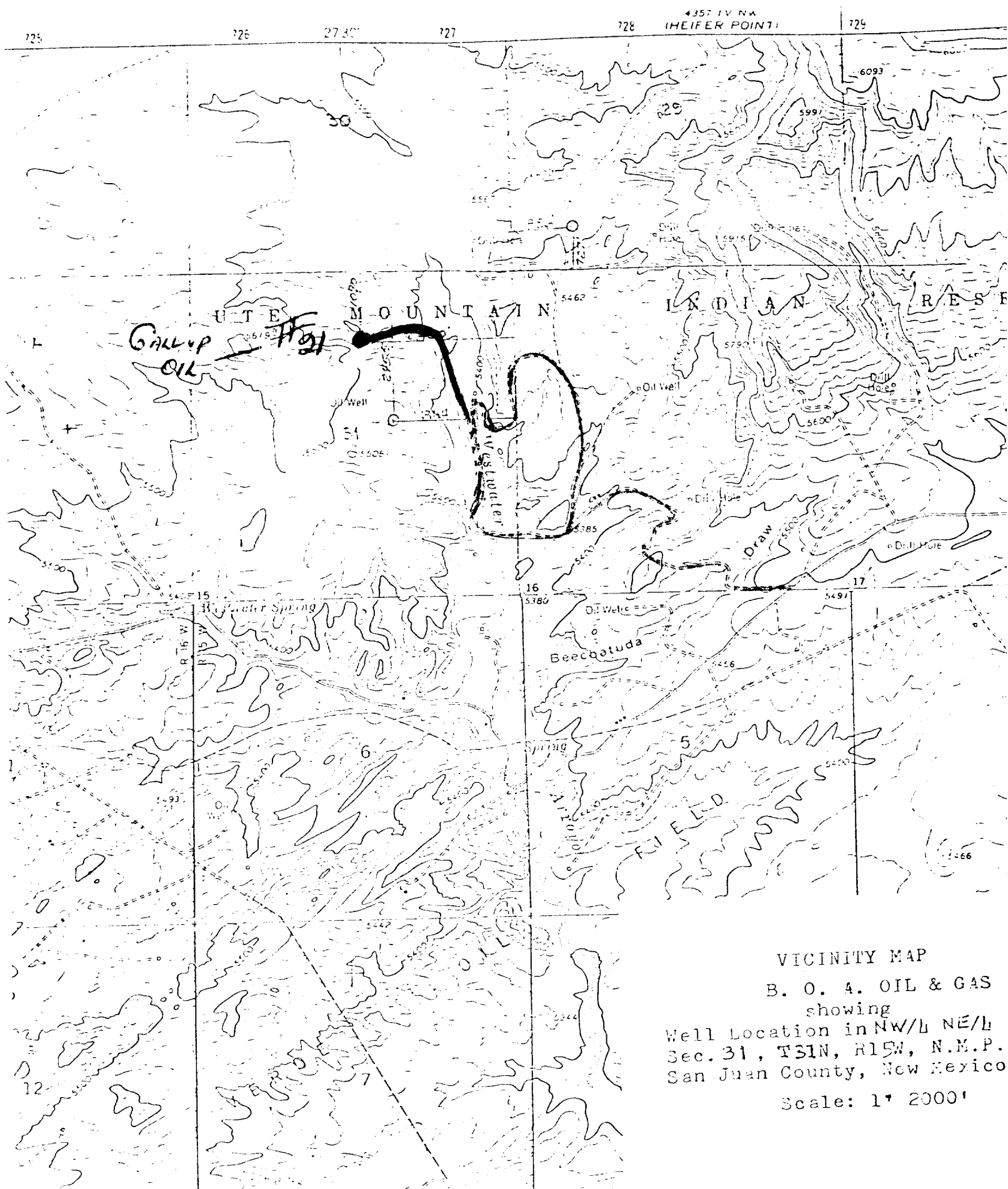
I hereby certify that the well location shown on this plat was plotted from field notes of actual surveys made by me or under my supervision, and that the same is true and correct to the best of my knowledge and belief.

Curtis C. Stockett
REGISTERED LAND SURVEYOR
No. 1581
Curtis C. Stockett
Registered Professional Engineer
and/or Land Surveyor
Curtis C. Stockett
C. Stockett

Certificate No.

5980 NMLS





VICINITY MAP
B. O. A. OIL & GAS
showing
Well Location in NW/4 NE/4
Sec. 31, T31N, R15W, N.M.P.
San Juan County, New Mexico
Scale: 1" = 2000'