

State of New Mexico  
Energy, Minerals and Natural Resources Department  
Oil Conservation Division

Sundry Notices and Reports on Wells

1. Type of Well  
GAS

2. Name of Operator

**BURLINGTON  
RESOURCES**

OIL & GAS COMPANY

3. Address & Phone No. of Operator

PO Box 4289, Farmington, NM 87499 (505) 326-9700

4. Location of Well, Footage, Sec., T, R, M

1165' FSL, 1000' FWL, Sec. 16, T-32-N, R-8-W, NMPM, San Juan County

API # (assigned by OCD)  
30-045-25278

5. Lease Number

6. State Oil & Gas Lease #  
V-88-1

7. Lease Name/Unit Name

Susco 16 State  
8. Well No.  
1

9. Pool Name or Wildcat  
Trail Canyon Gallup/  
Basin Dakota

10. Elevation:

Type of Submission

☒ Notice of Intent

☐ Subsequent Report

☐ Final Abandonment

Type of Action

☐ Abandonment

☐ Recompletion

☐ Plugging Back

☐ Casing Repair

☐ Altering Casing

☒ Other - Packer & tubing repair

☐ Change of Plans

☐ New Construction

☐ Non-Routine Fracturing

☐ Water Shut off

☐ Conversion to Injection

13. Describe Proposed or Completed Operations

It is intended to repair the tubing and packer in the subject well according to the attached procedure and wellbore diagram.

**RECEIVED**  
DEC 30 1996

**OIL CON. DIV.**  
DIST. 3

SIGNATURE

*[Signature]*

(KM6) Regulatory Administrator December 26, 1996

(This space for State Use)

Approved by

*[Signature]*

Title DEPUTY OIL & GAS INSPECTOR, DIST. #3 Date DEC 30 1996

**PACKER REPAIR / TUBING REPAIR**  
**Susco 16 State #1**  
**Gallup/Dakota**  
**DPNO: 15261A / 15262A**  
**Sec. 16, T32N, R08W, San Juan County, NM**  
**Lat/Long: 36.30.024720" - 108.68.18820"**

**Project Summary:**

The Susco 16 State #1 failed it's last packer leakage test. Thus, either the packer or Dakota tubing is leaking. Most likely it is the tubing. The Dakota production (45 MCFD) does not justify milling out the existing packer. We will determine whether the tubing or packer is leaking. If it is the packer we will set a new packer above the old one.

1. Test location rig anchors and prepare blow pit. Comply with all NMOCD, BLM, and BROGC safety regulations.
2. MIRU daylight PU. Kill well with 2% KCl water. ND wellhead, NU BOP. Send wellhead to A-1 Machine to be re-dressed and tested. POOH with Gallup tubing string (2-1/16" tbg. on casing valve side of wellhead). Lay down Gallup tubing.
3. POOH with 2-1/16" Dakota tubing. The seal unit is a straight pickup to pull out of the packer.
4. Replace the seals on the locator seal assembly. Add 5 jts. of additional tail pipe (use Gallup pipe). RIH with tailpipe, seal unit, and 2-1/16" tubing. Hydrotest tubing (above slips) while tripping in hole. Land tubing with 8000# compression (same as original setting). The tailpipe should hang at approximately 8350'.
5. If no leaks in the tubing were found, then POOH and RIH with a new Baker Model R-3 Double-Grip packer. Let the 2-1/16" tailpipe run through the Otis packer (3.00" ID Bore). Land the tubing at approximately 8350' with the new packer set at approximately 8160'.
6. ND BOP, NU wellhead (single string). Swab well in. RDMO PU. Turn well to production. Transport Gallup tubing to yard.

Approve:

 12/18/96  
Operations Engineer

Approve:

\_\_\_\_\_  
Drilling Superintendent

Concur:

\_\_\_\_\_  
Production Superintendent

Contact:	Kevin Midkiff	Operations Engineer	326-9807 (Office) 564-1653 (Pager)
	Cliff Brock	Production Foreman	326-9818 (Office) 326-8872 (Pager)

**SUSCO 16 STATE #1**  
Recommended Vendors

<u>Service</u>	<u>Vendor</u>	<u>Telephone #</u>
Packer Service	Halliburton Energy	325-3423
Hydro test	Wilson Service Company	327-2575
New packer	Baker	325-0216

# Susco 16 State #1

Current -- 11/15/96

DPNO: 15261A Dakota

15261B Gallup

1165' FSL, 1000' FWL

Unit M, Sec. 16, T32N, R08W, San Juan County, NM

Lat / Long.: 36° 30.024720", 108° 68.18820"

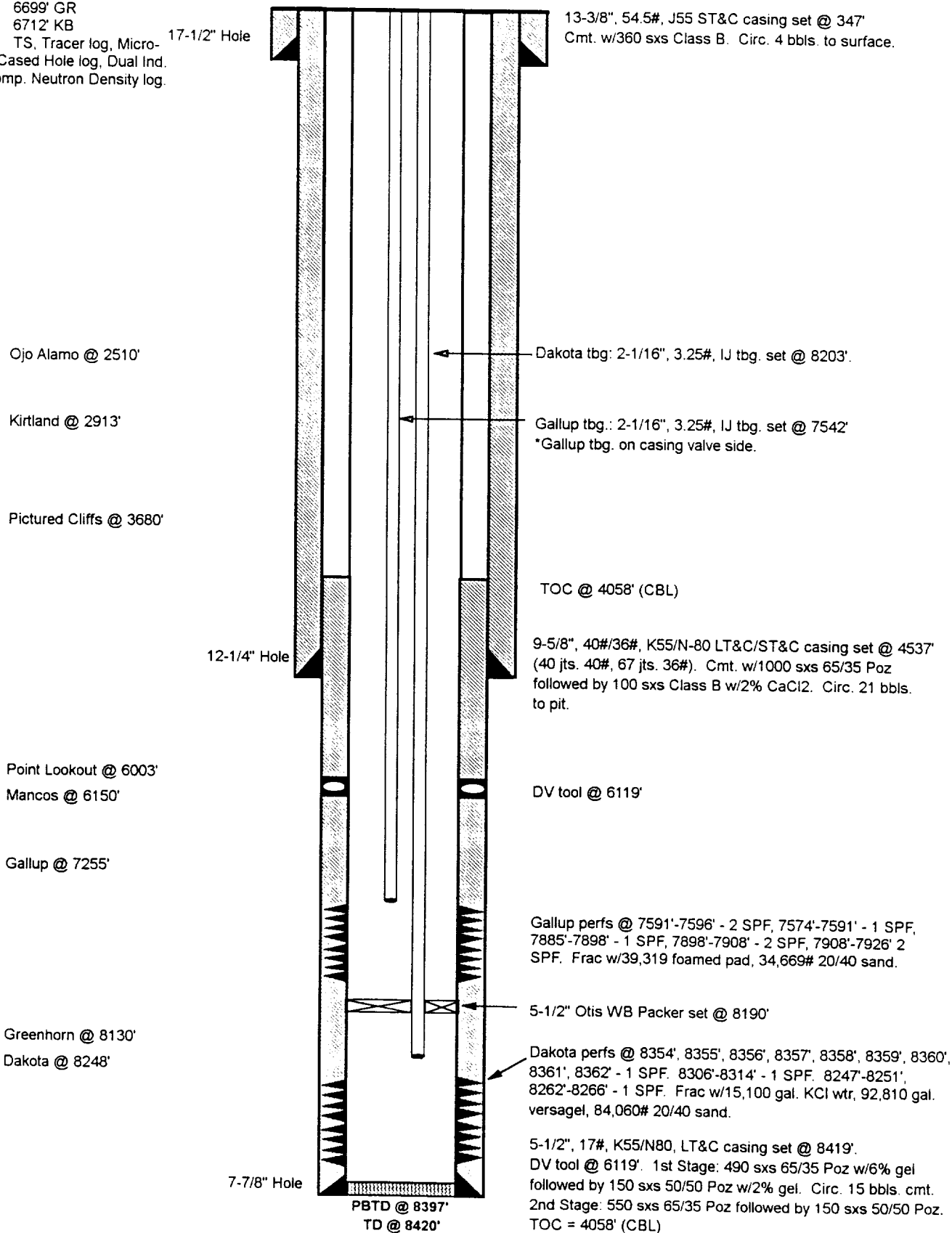
Spud: 1/15/82

Completed : 5/18/82

Elevation: 6699' GR

6712' KB

Logs: TS, Tracer log, Micro-Seismogram Cased Hole log, Dual Ind. Guard log, Comp. Neutron Density log.



WELLNAME: Susco 16 State #1		DP NUMBER: 15261A - Dakota 15262A - Gallup PROP. NUMBER: 071307500	
WELL TYPE: Dakota / Gallup		ELEVATION: GR 6699' KB 6712'	
LOCATION: 1165' FSL, 1000' FWL Unit M, Sec. 16, T32N, R08W San Juan County, New Mexico		INITIAL POTENTIAL: <u>GLP</u> 2885 MCFD 5/26/82 <u>DK</u> 2885 MCFD 6/2/82  INITIAL SICP: Psig	
OWNERSHIP: <u>DK/GLP</u> GWI: 100.0000% NRI: 83.3300% SJB: 0.0000%		DRILLING: SPUD DATE: 1/15/82 COMPLETED: 5/18/82 TOTAL DEPTH: 8420' PBD: 8397'	
CASING RECORD:			
<u>HOLE SIZE</u>	<u>SIZE</u>	<u>WEIGHT</u>	<u>GRADE</u>
17-1/2"	13-3/8"	54.5#	J55
			<u>DEPTH</u>
			347'
			<u>EQUIP.</u>
			ST&C Casing
			<u>CEMENT</u>
			360 sxs Class B w/1/4# Celloflake. Circ. 4 bbls. to surf.
			<u>TOC</u>
			Circ. to surface
12-1/4"	9-5/8"	40#/36#	K55/N80
			4537'
			LT&C/ST&C Casing
			40 jts. 40#
			67 jts. 36#
			<u>CEMENT</u>
			1000 sxs 65/35, followed by 100 sxs Class B w/2% CaCl2. Circ. 21 bbls. to pit.
			<u>TOC</u>
			Circ. to surface
7-7/8"	5-1/2"	17#	K55/N80
			8419'
			LT&C Casing
			DV tool @ 6119'
			<u>CEMENT</u>
			1st Stage: 490 sxs 65/35 Poz w/6% gel, followed by 150 sxs 50/50 Poz w/2% gel.
			4058' (CBL) (Reported)
Dakota tubing	2-1/16"	3.25#	
Gallup tubing	2-1/16"	3.25#	
			8203'
			7542'
Otis 5-1/2" WB Packer @ 8190'			(*Short string is on casing valve side)
FORMATION TOPS:			
	Ojo Alamo	2510'	Greenhorn
	Kirtland	2913'	Dakota
	Pictured Cliffs	3680'	
	Point Lookout	6003'	
	Mancos	6150'	
	Gallup	7255'	
LOGGING: TS, Tracer log, Micro-Seismogram Cased Hole log, Dual Ind. Guard log, Comp. Neutron Density log Good gas show (1300 units C1) in Pictured Cliffs			
PERFORATIONS			
Upper DK	8247'-8251', 8262'-8266 - 1 SPF		
Middle DK	8306'-8314' - 1 SPF		
Lower DK	8354', 8355', 8356', 8357', 8358', 8359', 8360', 8361', 8362' - 1 SPF.		
Upper Glp	7591'-7596' - 2 SPF, 7574'-7591' - 1 SPF		
Lower Glp	7885'-7898' - 1 SPF, 7898'-7908' - 2 SPF, 7908'-7920' - 1 SPF, 7920'-7926' - 2 SPF - 51 holes		
STIMULATION: See attached sheet.			
WORKOVER HISTORY: None			
PRODUCTION HISTORY:			
	<u>DK</u>	<u>GLP</u>	RESERVE INFORMATION:
Cumulative as of 9/96:	88 MMCF	51 MMCF	<u>DK</u> <u>GLP</u>
Current as of 11/96:	45 MCFD	Shut In 1/1/93	Gross EUR 270 MMCF 51 MMCF Gross Remaining Reserves 176 MMCF 0
PIPELINE: Williams Field Service			

**TUBING CONFIGURATION:** Dakota Pump out plug, 4' sub, Otis 2-1/16" IJ N nipple(1.448" ID), 6' sub, packer to tail pipe adapter, Otis 5-1/2" WB packer, seal assembly, 8 joints 2-1/16" IJ tbg, 3 blast joints, 234 joints 2-1/16" tbg., 6' pup joint, 10' pup joint, 1 joint 2-1/16" tbg. Packer has 3.00" ID bore, tubing set w/8,000# compression.

Gallup Otis 2-1/16" N nipple (1.448" ID), 234 joints 2-1/16" IJ tbg.  
 \* Note: Short string is on casing valve side.

**STIMULATION:**

DK Upper Acidize w/500 gal. 7-1/2% MCA. Frac w/5000 gal. 2% KCl wtr, 43,000 gal. versagel and 45,060 20/40 sand.

DK Middle Acidize w/500 gal. 7-1/2% MCA. Frac w/6,100 gal. KCl wtr, 30,000 gal. versagel and 31,000# 20/40 sand.

DK Lower Acidize w/500 gal. 7-1/2% MCA. Frac w/4,000 gal. prepad, 19,810 gal. versagel, 8,000# 20/40 sand

Upper Gallup Loaded tbg. w/2% KCl water followed by 1500 gal. 7-1/2% spearhead acid, displaced acid w/2% KCl water.  
 Frac w/1000 gal. 7-1/2% acid, 20,700 gal. 70% foam, 28,550# 20/40 sand. displaced w/1890 gal. 2% KCl wtr.

Lower Gallup 1000 gal. 7-1/2% spearhead acid down tbg. Frac w/18,619 gal. foamed pad, 6,119# 20/40 sand.

# OTIS PACKER INSTALLATION REPORT

OEL-450.8.1

INSTRUCTIONS: COMPLETE FOUR (4) COPIES. SEND 1st COPY TO DIVISION OFFICE, 2nd COPY TO DALLAS ACCOUNTING ATTACHED TO DELIVERY TICKET (M.S.O.), 3rd COPY TO DISTRICT OFFICE, 4th COPY TO CUSTOMER.



OTIS ENGINEERING CORPORATION  
General Offices: Belt Line Rd. at Webb Chapel  
P. O. Box 34380, Dallas, Texas 75234

COMPANY <i>Southern Union Exploration</i>		FIELD	SVC.
WELL NAME <i>Super 16 State #1</i>		COUNTY <i>San Juan</i>	STATE <i>N.M.</i>
CASING SIZE <i>5 1/2"</i>	WEIGHT <i>15.50</i>	GRADE	
LINER SIZE	WEIGHT	GRADE	

FLUID CONTENT AND CONDITION:

REMARKS:



TYPE PACKER		PART NO.		SERIAL NO.	
LONG STRING		BORE ID.	TUBING SIZE	TENSION	COMPRESSION
INTER-MEDIATE STRING		BORE ID.	TUBING SIZE	TENSION	COMPRESSION
SHORT STRING		BORE ID.	TUBING SIZE	TENSION	COMPRESSION

TYPE PACKER		PART NO.		SERIAL NO.	
LONG STRING		BORE ID.	TUBING SIZE	TENSION	COMPRESSION
SHORT STRING		BORE ID.	TUBING SIZE	TENSION	COMPRESSION

TYPE PACKER		PART NO.		SERIAL NO.	
LONG STRING		BORE ID.	TUBING SIZE	TENSION	COMPRESSION
SHORT STRING		BORE ID.	TUBING SIZE	TENSION	COMPRESSION

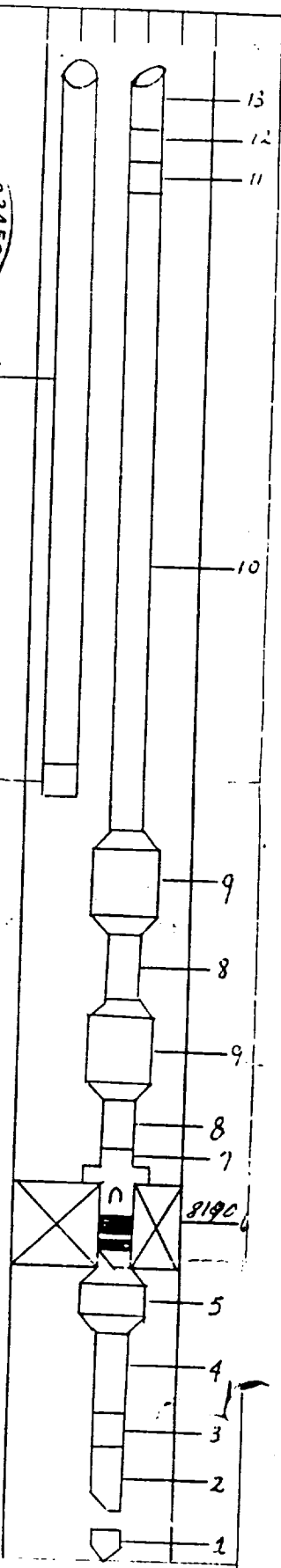
TYPE PACKER		PART NO.		SERIAL NO.	
TYPE SEALING UNIT		PART NO.		TENSION	COMPRESSION
		EXPENDABLE PLUG		FLAPPER VALVE	

TYPE PACKER		PART NO.		SERIAL NO.	
TYPE SEALING UNIT	<i>5 1/2" 13 to 12"</i>	BORE ID.	PART NO.	SERIAL NO.	
SIZE TENSION SLEEVE	<i>2nd Location</i>	PART NO.	TENSION	COMPRESSION	
		EXPENDABLE PLUG	FLAPPER VALVE		

ACCESSORY EQUIPMENT ON WELL DIAGRAM — NUMBER THE SYMBOL & IDENTIFY BELOW:	
1 <i>Pump Out Plug 2 1/4</i>	9 <i>3 2 1/4 Blast Joints</i>
2 <i>2 1/4 x 2 1/4 ft Sub</i>	10 <i>2 3/4 3 1/2 2 1/4 Tubing</i>
3 <i>OTIS 2 1/4 J.S. "N" Apple 148</i>	11 <i>2 1/4 x 6 ft Pop Joint</i>
4 <i>2 1/4 x 6 ft Sub</i>	12 <i>2 1/4 x 16 ft Pop Joint</i>
5 <i>Packer To Tail Pipe Adapter</i>	13 <i>One Joint 2 1/4 J.S. Tubing</i>
6 <i>OTIS 5 1/2 W.B. Packer</i>	14 <i>OTIS 2 1/4 "N" Apple w/ 1.4 x 8 ft</i>
7 <i>Seal Unit w/ 2 1/4 x 2 1/4 Sub</i>	15 <i>2 3/4 J.S. 2 1/4 J.S. Tubing</i>
8 <i>8 Joints 2 1/4 J.S. Tubing</i>	16

COMMENTS ON PACKER PERFORMANCE

DIVISION <i>Permian</i>	DISTRICT <i>408</i>	OPERATION NAME <i>E.L. Starnes</i>
----------------------------	------------------------	---------------------------------------



<input checked="" type="checkbox"/> NEW	<input type="checkbox"/> RERUN
---	--------------------------------

NO. PROD. ZONES	Agc ONLY
	<i>20 Connelley</i>
DATE <i>4/11/60</i>	M.S.O. NO.