

UNITED STATES  
DEPARTMENT OF THE INTERIOR  
GEOLOGICAL SURVEY

30-045-5416

APPLICATION FOR PERMIT TO DRILL, DEEPEN, OR PLUG BACK

1a. TYPE OF WORK  
DRILL ☒ DEEPEN ☐ PLUG BACK ☐

b. TYPE OF WELL  
OIL WELL ☒ GAS WELL ☐ OTHER ☐  
SINGLE ZONE ☒ MULTIPLE ZONE ☐

2. NAME OF OPERATOR

Solar Petroleum, Inc.

3. ADDRESS OF OPERATOR

One Denver Place, Suite 1300, 999 18th St. Denver, Col. 80202

4. LOCATION OF WELL (Report location clearly and in accordance with any State requirements.)\*

At surface 1425' FML, 2630' FEL

At proposed prod. zone  
same

14. DISTANCE IN MILES AND DIRECTION FROM NEAREST TOWN OR POST OFFICE\*

15 miles NE of Shiprock, New Mexico

15. DISTANCE FROM PROPOSED\*

LOCATION TO NEAREST  
PROPERTY OR LEASE LINE, FT.  
(Also to nearest drig. unit line, if any) 1425'

18. DISTANCE FROM PROPOSED LOCATION\*

TO NEAREST WELL, DRILLING, COMPLETED,  
OR APPLIED FOR, ON THIS LEASE, FT.

19. PROPOSED DEPTH

940'

21. ELEVATIONS (Show whether DF, RT, GR, etc.)

5199 G.L. 5207

23. PROPOSED CASING AND CEMENTING PROGRAM

SIZE OF HOLE	SIZE OF CASING	WEIGHT PER FOOT	SETTING DEPTH
12 1/4	8 5/8	23 #	60'
6 3/4	4 1/2	10.5#	940'

Propose to drill with mud, run mechanical fracture the Gallup formation. A BOP as per illustration will be used for blow out prevention checked for proper operation daily.

IN ABOVE SPACE DESCRIBE PROPOSED PROGRAM: If proposal is to deepen or plug back, give data on present productive zone. If proposal is to drill or deepen directionally, give pertinent data on subsurface locations and measured and/or estimated depths. Give blowout preventer program, if any.

24.

SIGNED

TITLE Agent

(This space for Federal or State office use)

PERMIT NO.

APPROVAL DATE

APPROVED BY

TITLE

CONDITIONS OF APPROVAL, IF ANY:

DRILLING OPERATIONS AUTHORIZED ARE  
SUBJECT TO COMPLIANCE WITH ATTACHED  
"GENERAL REQUIREMENTS"

This action is subject to administrative  
approval pursuant to 30 CFR 290

NMOCC

5. LEASE DESIGNATION AND SERIAL NO.

14-20-603-203

6. INDIAN ALLOTTEE OR TRIBE NAME

AGREEMENT NAME

7. NAME OF LEASEE

8. COUNTY

9. TOWNSHIP

10. RANGE

11. SECTION

12. QUARTER

13. SURVEY

14. FIELD AND POST OFFICE

15. COUNTY OR PARISH

16. STATE

17. NO. OF ACRES ASSIGNED TO THIS WELL

18. APPROX. DATE WORK WILL START\*

19. NO. OF ACRES IN LEASE

20. ROTARY OR OTHER DRILLING

21. APPROX. DATE WORK WILL START\*

22. APPROX. DATE WORK WILL START\*

23. APPROX. DATE WORK WILL START\*

24. APPROX. DATE WORK WILL START\*

25. APPROX. DATE WORK WILL START\*

26. APPROX. DATE WORK WILL START\*

27. APPROX. DATE WORK WILL START\*

28. APPROX. DATE WORK WILL START\*

29. APPROX. DATE WORK WILL START\*

30. APPROX. DATE WORK WILL START\*

31. APPROX. DATE WORK WILL START\*

32. APPROX. DATE WORK WILL START\*

33. APPROX. DATE WORK WILL START\*

34. APPROX. DATE WORK WILL START\*

35. APPROX. DATE WORK WILL START\*

36. APPROX. DATE WORK WILL START\*

37. APPROX. DATE WORK WILL START\*

38. APPROX. DATE WORK WILL START\*

39. APPROX. DATE WORK WILL START\*

40. APPROX. DATE WORK WILL START\*

41. APPROX. DATE WORK WILL START\*

42. APPROX. DATE WORK WILL START\*

43. APPROX. DATE WORK WILL START\*

44. APPROX. DATE WORK WILL START\*

45. APPROX. DATE WORK WILL START\*

46. APPROX. DATE WORK WILL START\*

47. APPROX. DATE WORK WILL START\*

48. APPROX. DATE WORK WILL START\*

49. APPROX. DATE WORK WILL START\*

50. APPROX. DATE WORK WILL START\*

51. APPROX. DATE WORK WILL START\*

52. APPROX. DATE WORK WILL START\*

53. APPROX. DATE WORK WILL START\*

54. APPROX. DATE WORK WILL START\*

55. APPROX. DATE WORK WILL START\*

56. APPROX. DATE WORK WILL START\*

57. APPROX. DATE WORK WILL START\*

58. APPROX. DATE WORK WILL START\*

59. APPROX. DATE WORK WILL START\*

60. APPROX. DATE WORK WILL START\*

61. APPROX. DATE WORK WILL START\*

62. APPROX. DATE WORK WILL START\*

63. APPROX. DATE WORK WILL START\*

64. APPROX. DATE WORK WILL START\*

65. APPROX. DATE WORK WILL START\*

66. APPROX. DATE WORK WILL START\*

67. APPROX. DATE WORK WILL START\*

68. APPROX. DATE WORK WILL START\*

69. APPROX. DATE WORK WILL START\*

70. APPROX. DATE WORK WILL START\*

71. APPROX. DATE WORK WILL START\*

72. APPROX. DATE WORK WILL START\*

73. APPROX. DATE WORK WILL START\*

74. APPROX. DATE WORK WILL START\*

75. APPROX. DATE WORK WILL START\*

76. APPROX. DATE WORK WILL START\*

77. APPROX. DATE WORK WILL START\*

78. APPROX. DATE WORK WILL START\*

79. APPROX. DATE WORK WILL START\*

80. APPROX. DATE WORK WILL START\*

## OIL CONSERVATION DIVISION

STATE OF NEW MEXICO  
ENERGY AND MINERALS DEPARTMENTP. O. BOX 2088  
SANTA FE, NEW MEXICO 87501Form C-102  
Revised 10-1-78

All distances must be from the outer boundaries of the Section.

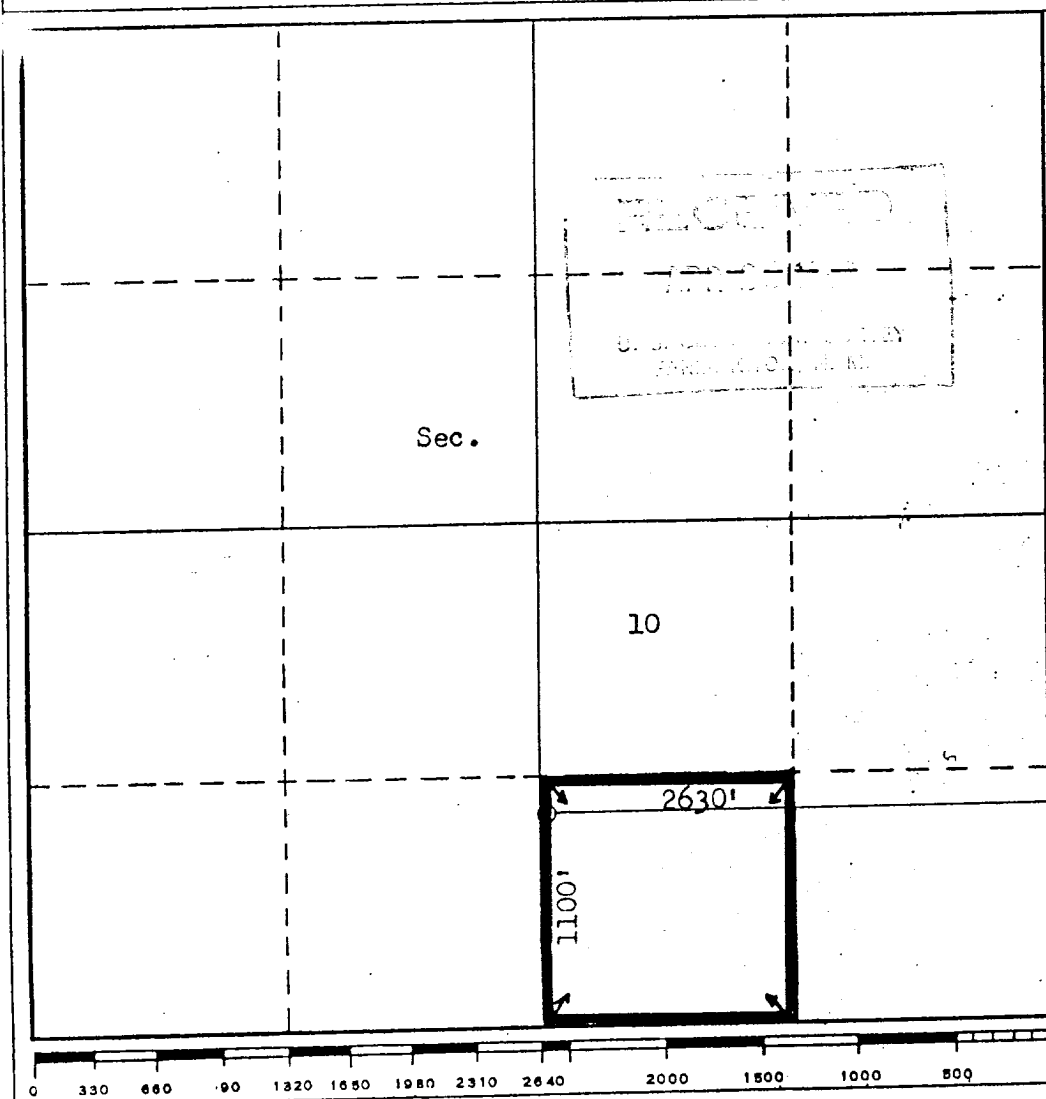
Operator <b>SOLAR PETROLEUM, INCORPORATED</b>			Lease <b>NAVAJO "F"</b>		Well No. <b>156</b>
Unit Letter <b>0</b>	Section <b>10</b>	Township <b>31N</b>	Range <b>17W</b>	County <b>San Juan</b>	
Actual Footage Location of Well: <b>1100</b> feet from the <b>South</b> line and <b>2630</b> feet from the <b>East</b> line					
Ground Level Elev. <b>5207</b>	Producing Formation <b>Gallup</b>		Pool <b>Horseshoe</b>	Dedicated Acreage: <b>40</b> Joint with #144 Acres	

1. Outline the acreage dedicated to the subject well by colored pencil or hachure marks on the plat below.
2. If more than one lease is dedicated to the well, outline each and identify the ownership thereof (both as to working interest and royalty).
3. If more than one lease of different ownership is dedicated to the well, have the interests of all owners been consolidated by communitization, unitization, force-pooling, etc?

☐ Yes ☐ No If answer is "yes," type of consolidation \_\_\_\_\_

If answer is "no," list the owners and tract descriptions which have actually been consolidated. (Use reverse side of this form if necessary.) \_\_\_\_\_

No allowable will be assigned to the well until all interests have been consolidated (by communitization, unitization, forced-pooling, or otherwise) or until a non-standard unit, eliminating such interests, has been approved by the Commission.



## CERTIFICATION

I hereby certify that the information contained herein is true and complete to the best of my knowledge and belief.

Name

Position

Agent

Company

Solar Petroleum, Inc.

Date

April 20, 1982

I hereby certify that the well location shown on this plat was plotted from field notes of actual surveys made by me or under my supervision, and that the same is true and correct to the best of my knowledge and belief.

Date Surveyed

April 14, 1982  
Registered Professional Engineer  
and/or Land Surveyor

Fred B. Kerr Jr.

Certificate No.

3950

B. KERR, JR.

NMOCC

