

UNITED STATES  
DEPARTMENT OF THE INTERIOR  
GEOLOGICAL SURVEY

APPLICATION FOR PERMIT TO DRILL, DEEPEN, OR PLUG BACK

1a. TYPE OF WORK  
DRILL ☒ DEEPEN ☐ PLUG BACK ☐

b. TYPE OF WELL  
OIL WELL ☐ GAS WELL ☒ OTHER ☐ SINGLE ZONE ☐ MULTIPLE ZONE ☐

2. NAME OF OPERATOR  
Robert L. Bayless

3. ADDRESS OF OPERATOR  
P.O. Box 1541, Farmington, NM 87401

4. LOCATION OF WELL (Report location clearly and in accordance with any State requirements)  
At surface 1100' FSL & 650' FWL  
At proposed prod. zone same

14. DISTANCE IN MILES AND DIRECTION FROM NEAREST TOWN OR POST OFFICE\*

10. DISTANCE FROM PROPOSED\* LOCATION TO NEAREST PROPERTY OR LEASE LINE, FT. (Also to nearest drlg. unit line, if any)

18. DISTANCE FROM PROPOSED LOCATION\* TO NEAREST WELL, DRILLING, COMPLETED, OR APPLIED FOR, ON THIS LEASE, FT.

21. ELEVATIONS (Show whether DF, RT, GR, etc.)  
5823' GL

23. PROPOSED CASING AND CEMENTING PROGRAM

SIZE OF HOLE	SIZE OF CASING	WEIGHT PER FOOT	SETTING DEPTH	QUANTITY OF CEMENT
12-1/4"	8-5/8"	23#	200	100 sx, 118 ft. <sup>3</sup> circ. to surface
7-7/8"	4-1/2"	10.5#	6495	900 sx, 1761 ft. <sup>3</sup> to cover Fruitland formation

Will drill 12-1/4" hole to 200 ft. and set 200 ft. of 8-5/8", 23#/ft., J-55 used casing and cement with 118 ft. <sup>3</sup> Class B cement w/2% CaCl. Cement will be circulated to surface. Will drill to 6215' and log well. If well appears productive, will run 6215' ft. of 4-1/2", 10.5#/ft., J-55 new casing with cement stage collar at 4550'. Will cement long string as follows: 1st stage: 413 ft. <sup>3</sup> Class B cement; 2nd stage: 1348 ft. <sup>3</sup> Class B w/2% D-79 extender to cover the Fruitland formation. Will perforate and stimulate well as required. No abnormal pressures or temperatures are anticipated. Circulation medium will be clear water, natural mud, and water loss additives. Blowout preventer schematic is attached. The gas from this formation is not dedicated.

ESTIMATED TOPS: Kirtland Surface Point Lookout - 4074'  
Fruitland - 1391' Gallup - 5398'  
Pict. Cliffs - 1670' Greenhorn - 6164'  
Cliff House - 3275' Dakota - 6276'

IN ABOVE SPACE DESCRIBE PROPOSED PROGRAM: If proposal is to deepen or plug back, give data on present productive zone and proposed new productive zone. If proposal is to drill or deepen directionally, give pertinent data on subsurface locations and measured and true vertical depths. Give blowout preventer program, if any.

24. SIGNED Robert L. Bayless TITLE Operator DATE 10/18/82

(This space for Federal or State office use)

PERMIT NO. APPROVAL DATE

APPROVED BY TITLE

CONDITIONS OF APPROVAL, IF ANY:

Hold C104 for NSL  
NSP from R 2046  
NSL

NMOC

31-145-25524

5. LEASE DESIGNATION AND SERIAL NO.  
NM 053822

6. IF INDIAN, ALLOTTEE OR TRIBE NAME

7. UNIT AGREEMENT NAME

8. FARM OR LEASE NAME  
Stribling

9. WELL NO.  
2

10. FIELD AND POOL, OR WILDCAT  
Basin Dakota

11. SEC., T. R., M., OR BLK. AND SURVEY OR AREA  
N Sec. 31 T31N, R13W

12. COUNTY OR PARISH  
San Juan

13. STATE  
NM

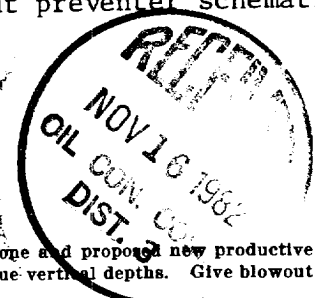
16. NO. OF ACRES IN LEASE  
w/2 31-31-13

17. NO. OF ACRES ASSIGNED TO THIS WELL  
322 321.99 Part of NW/4 G-30-13

19. PROPOSED DEPTH  
6495'

20. ROTARY OR CABLE TOOLS  
Rotary

22. APPROX. DATE WORK WILL START\*  
ASAP



APPROVED  
AS AMENDED  
NOV 12 1982  
JAMES F. SIMS  
DISTRICT ENGINEER

NEW MEXICO OIL CONSERVATION COMMISSION  
WELL LOCATION AND ACREAGE DEDICATION PLAT

Form C-102  
Supersedes C-128  
Effective 1-1-65

All distances must be from the outer boundaries of the Section.

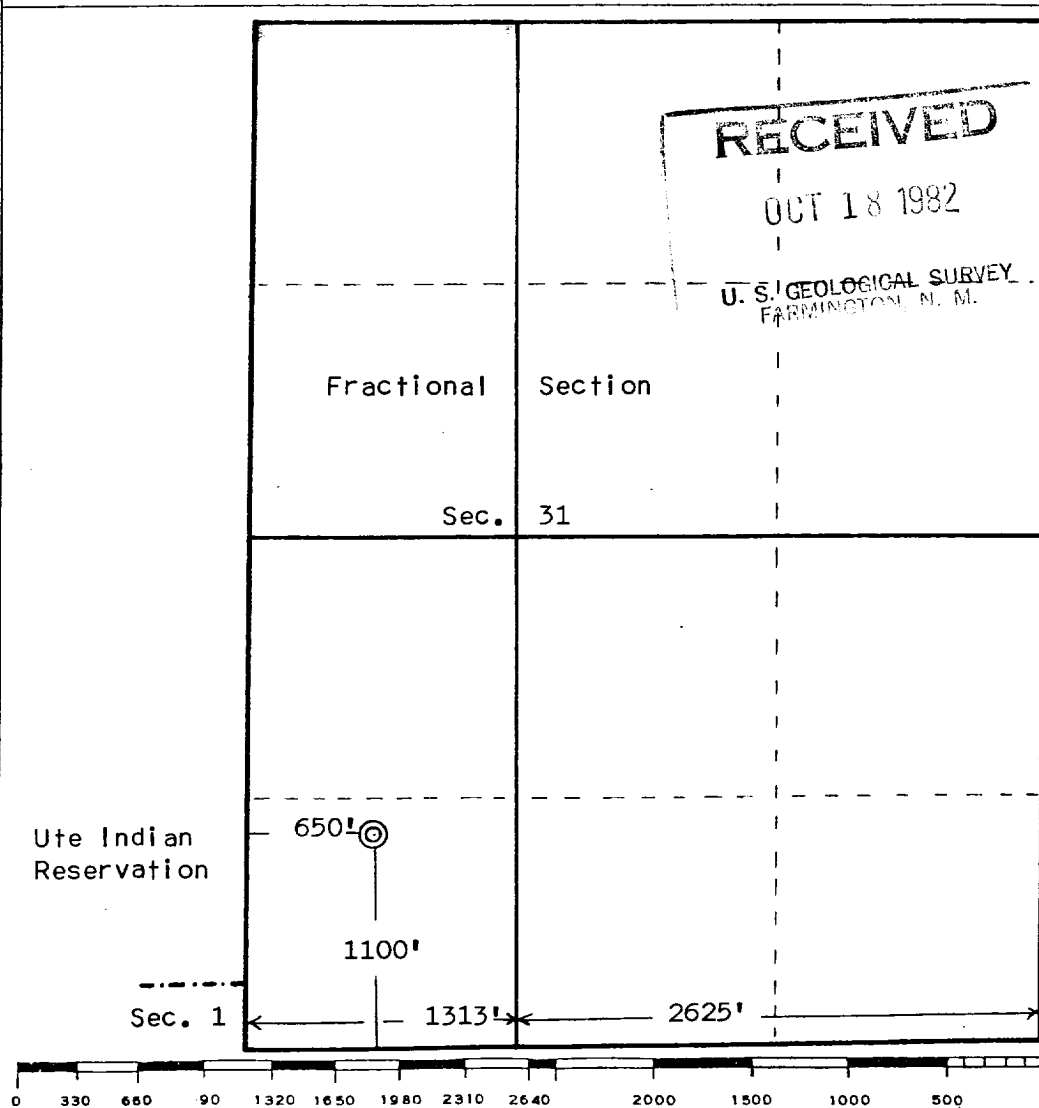
Operator <b>Robert L. Bayless</b>			Lease <b>Stribling</b>		Well No. <b>2</b>
Unit Letter <b>N</b>	Section <b>31</b>	Township <b>31 North</b>	Range <b>13 West</b>	County <b>San Juan</b>	
Actual Footage Location of Well: <b>1100</b> feet from the <b>South</b> line and <b>650</b> feet from the <b>West</b> line					
Ground Level Elev. <b>5823</b>	Producing Formation <b>Dakota</b>		Pool <b>Basin Dakota</b>		Dedicated Acreage: (See attached plat) <b>321.79</b> Acres

1. Outline the acreage dedicated to the subject well by colored pencil or hatchure marks on the plat below.
2. If more than one lease is dedicated to the well, outline each and identify the ownership thereof (both as to working interest and royalty).
3. If more than one lease of different ownership is dedicated to the well, have the interests of all owners been consolidated by communitization, unitization, force-pooling, etc?

☒ Yes    ☐ No    If answer is "yes," type of consolidation Communitization agreement

If answer is "no," list the owners and tract descriptions which have actually been consolidated. (Use reverse side of this form if necessary.) \_\_\_\_\_

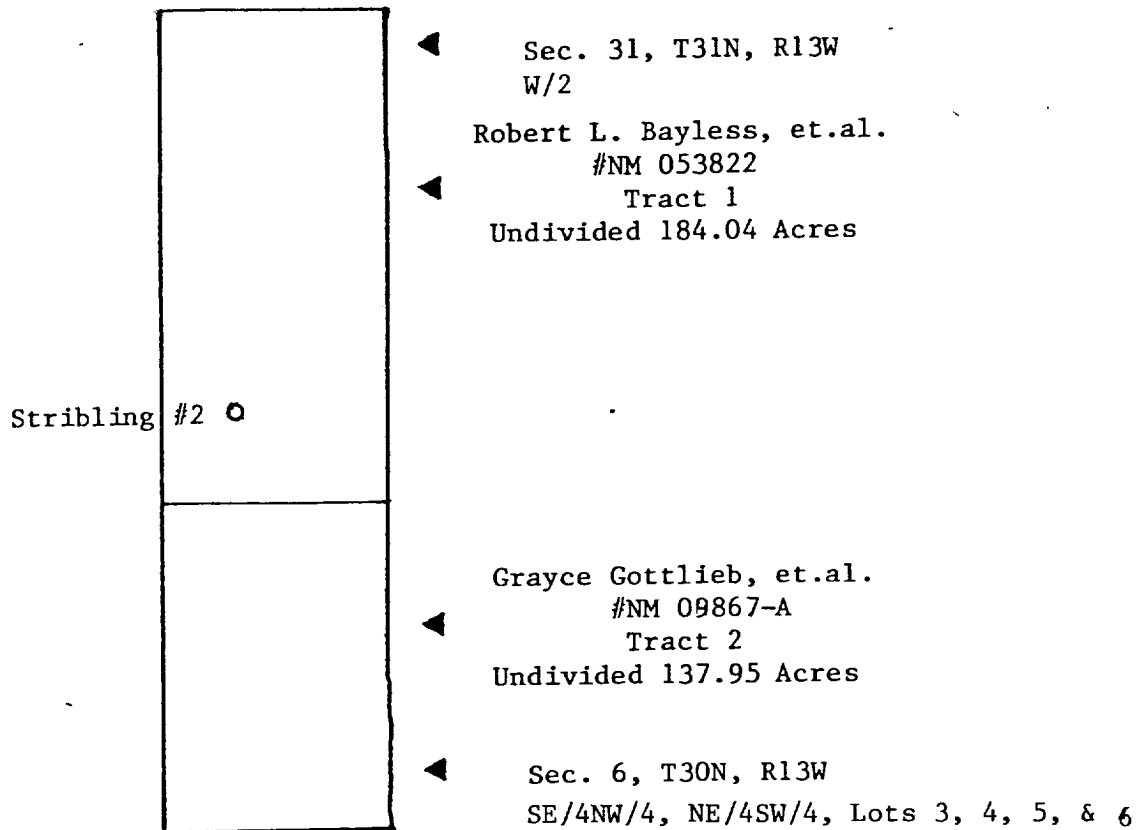
No allowable will be assigned to the well until all interests have been consolidated (by communitization, unitization, forced-pooling, or otherwise) or until a non-standard unit, eliminating such interests, has been approved by the Commission.



<b>CERTIFICATION</b>	
I hereby certify that the information contained herein is true and complete to the best of my knowledge and belief.	
Name	<b>Robert L. Bayless</b>
Position	<b>Owner</b>
Company	<b>Robert L. Bayless</b>
Date	<b>August 31, 1982</b>
I hereby certify that the well location shown on this plat was located from field notes of actual surveys made by me or under my supervision, and that the same is true and correct to the best of my knowledge and belief.	
Date Surveyed	<b>April 21, 1982</b>
Registered Professional Engineer and/or Land Surveyor	
<b>Edgar L. Risenhoover</b>	
Certificate No.	<b>5979</b>
<b>Edgar L. Risenhoover, L.S.</b>	

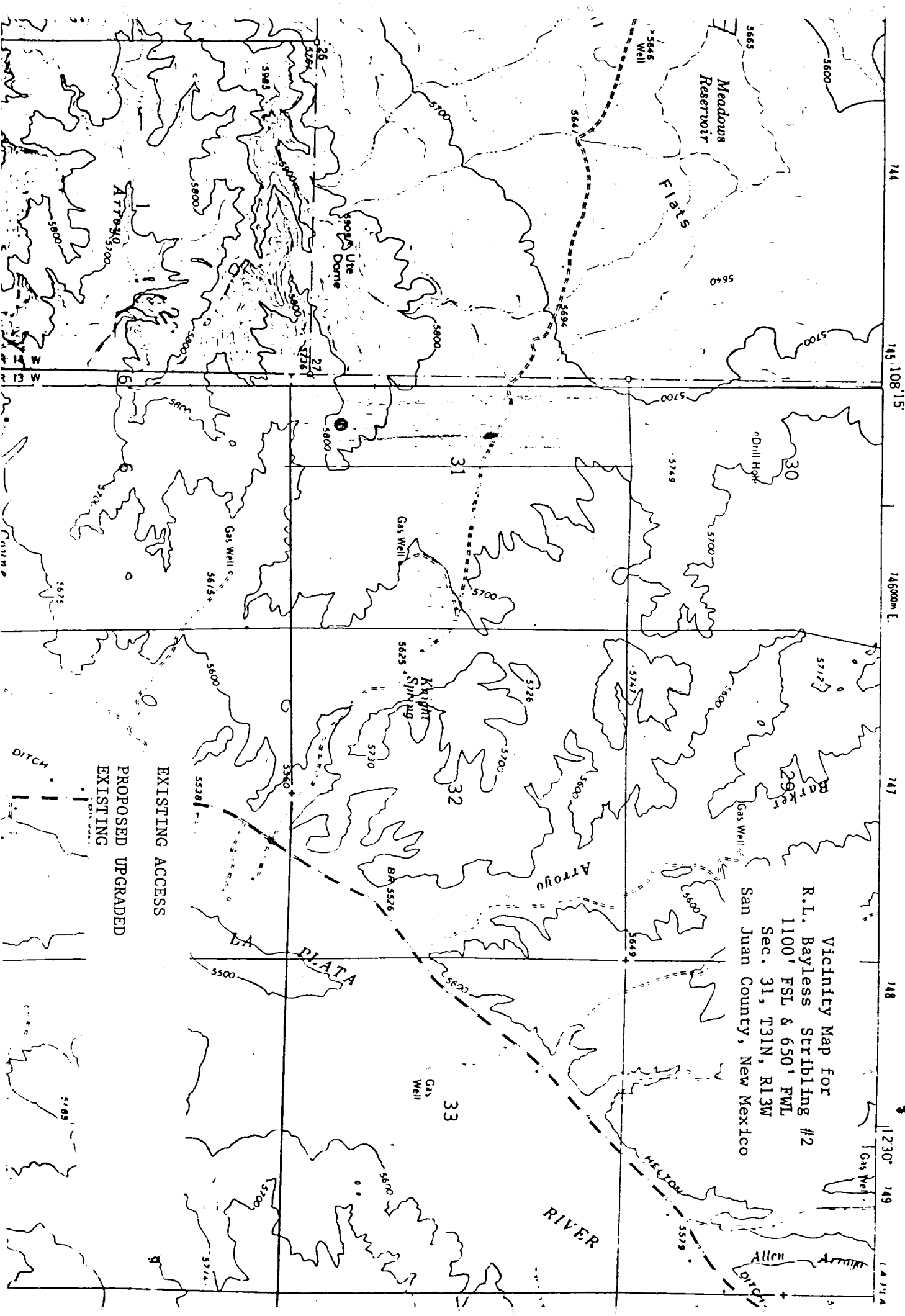
EXHIBIT A

Plat of communitized area covering W/2 Sec. 31, T. 31 N,  
R. 13 W, and W/2 Sec. 6, T. 30 N, R. 13 W, Basing Dakota  
field, San Juan County, New Mexico.



YOUNGS LAKE QUADRANGLE  
 NEW MEXICO-SAN JUAN CO.  
 75 MINUTE SERIES (TOPOGRAPHIC).

UNITED STATES  
 DEPARTMENT OF THE INTERIOR  
 GEOLOGICAL SURVEY



Vicinity Map for  
 R.L. Bayless Stribling #2  
 1100' FSL & 650' FWL  
 Sec. 31, T31N, R13W  
 San Juan County, New Mexico

EXISTING ACCESS  
 PROPOSED UPGRADED  
 EXISTING

RIVER

PLATA

DITCH