

APPROVED FOR	
DISTRIBUTION	
SANTA FE	
FILE	
INDEX	
LAND OFFICE	
COMPLETION	

5A. Indicate Type of Lease
STATE ☒ FEDERAL ☐
5. Indicate Oil & Gas Lease No.

APPLICATION FOR PERMIT TO DRILL, DEEPEN, OR PLUG BACK

1. Type of Well
a. Type of Well
DRILL ☒ DEEPEN ☐ PLUG BACK ☐
OIL WELL ☐ GAS WELL ☒ OTHER ☐
b. Number of Zones
SINGLE ZONE ☒ MULTIPLE ZONE ☐

7. Unit Agreement Name
8. Name of Lease Name
State Gas Com BC

2. Name of Operator
Amoco Production Company

9. Well No.
1E

3. Address of Operator
501 Airport Dr., Farmington, NM 87401

10. Field and Pool, or without
Basin Dakota

4. Well Location
UNIT LETTER G LOCATED 1520 FEET FROM THE North LINE
1565 FEET FROM THE East LINE OF SEC. 32 TWP. 31N. R. 12W. S. 12E.

11. County
San Juan

5. Well Depth
1565 FEET FROM THE East LINE OF SEC. 32 TWP. 31N. R. 12W. S. 12E.

12. County
San Juan

6. Well Diameter
6048" CL

13. Rotary or C/L.
Rotary

7. Well Status
6048" CL

14. Approx. Date Work will start
As soon as permitted.

PROPOSED CASING AND CEMENT PROGRAM

SIZE OF HOLE	SIZE OF CASING	WEIGHT PER FOOT	SETTING DEPTH	SACKS OF CEMENT	EST. TOP
12-1/4"	8-5/8"	32#	300'	300	Surface
7-7/8"	4-1/2"	10.5#	7040'	1200	Surface

This application to drill an infill Basin Dakota well is pursuant to Order No. R-1670-V approved by the NMOCDD on May 22, 1979. This well will qualify under Section 103 of the Natural Gas Policy Act under Order No. R-1670-V.

The well will be drilled to the surface casing point using native mud. The well will then be drilled to TD with a low solids nondispersed mud system. Completion design will be based on open hole logs. Copy of all logs will be filed upon completion. Amoco's standard blow-out prevention will be employed; see attached drawing for blowout prevention design.

Gas produced from this well is dedicated to El Paso Natural Gas Company under Contract No. 56742.

APPROVED BY 7/14/83
UNLESS OTHERWISE COMMENCED.
SPUD DATE MUST BE SUBMITTED
WITHIN 1 YEAR

RECEIVED

JAN 14 1983

OIL CON. DIV.

DIST. 3

1-10-83

IN ABOVE SPACE DESCRIBE PROPOSED PROGRAM IF PROPOSAL IS TO DEEPEN OR PLUG BACK. GIVE DATA ON PRESENT PRODUCTIVE ZONE AND PROPOSED NEW PRODUCTIVE ZONE. GIVE BLOWOUT PREVENTER PROGRAM, IF ANY.

I hereby certify that the information above is true and complete to the best of my knowledge and belief.

Original Signed By
D. H. SHOEMAKER

Title District Engineer

Signed [Signature]
(This space for State Use)

APPROVED BY [Signature]

TITLE

DATE

CONDITIONS OF APPROVAL, IF ANY:

OIL CONSERVATION DIVISION

P. O. BOX 2088

SANTA FE, NEW MEXICO 87501

Form C-102
Revised 10-1-72

STATE OF NEW MEXICO

ENERGY AND MINERALS DEPARTMENT

All distances must be from the outer boundaries of the Section.

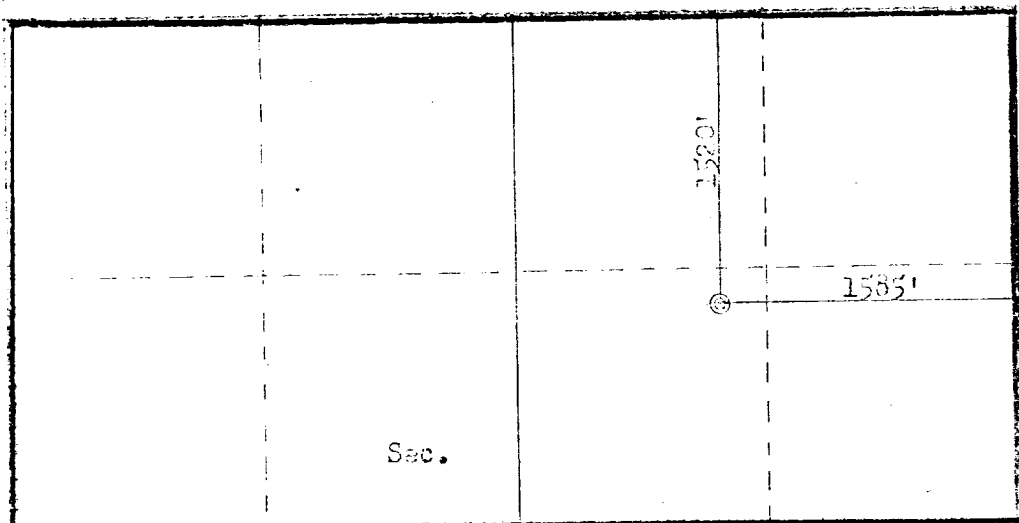
Operator AMOCO PRODUCTION COMPANY			Lease STATE GAS COM CO		Well No. 1E
Well Letter 0	Section 32	Township 31N	Range 12W	County San Juan	
Actual Footage Location of Well: 1520 feet from the North line and 1585 feet from the East line					
Ground Level Elev: 6043	Producing Formation Dakota		Pool Basin Dakota		Dedicated Acreage: N 320 Acres

1. Outline the acreage dedicated to the subject well by colored pencil or hatchure marks on the plat below.
2. If more than one lease is dedicated to the well, outline each and identify the ownership thereof (both as to working interest and royalty).
3. If more than one lease of different ownership is dedicated to the well, have the interests of all owners been consolidated by communitization, unitization, force-pooling, etc?

☒ Yes ☐ No If answer is "yes," type of consolidation Communitization

If answer is "no," list the owners and tract descriptions which have actually been consolidated. (Use reverse side of this form if necessary.)

No allowable will be assigned to the well until all interests have been consolidated (by communitization, unitization, forced-pooling, or otherwise) or until a non-standard unit, eliminating such interests, has been approved by the Commission.



32	
RECEIVED JAN 14 1983 OIL CON. DIV. DIST. 3	

CERTIFICATION

I hereby certify that the information contained herein is true and complete to the best of my knowledge and belief.

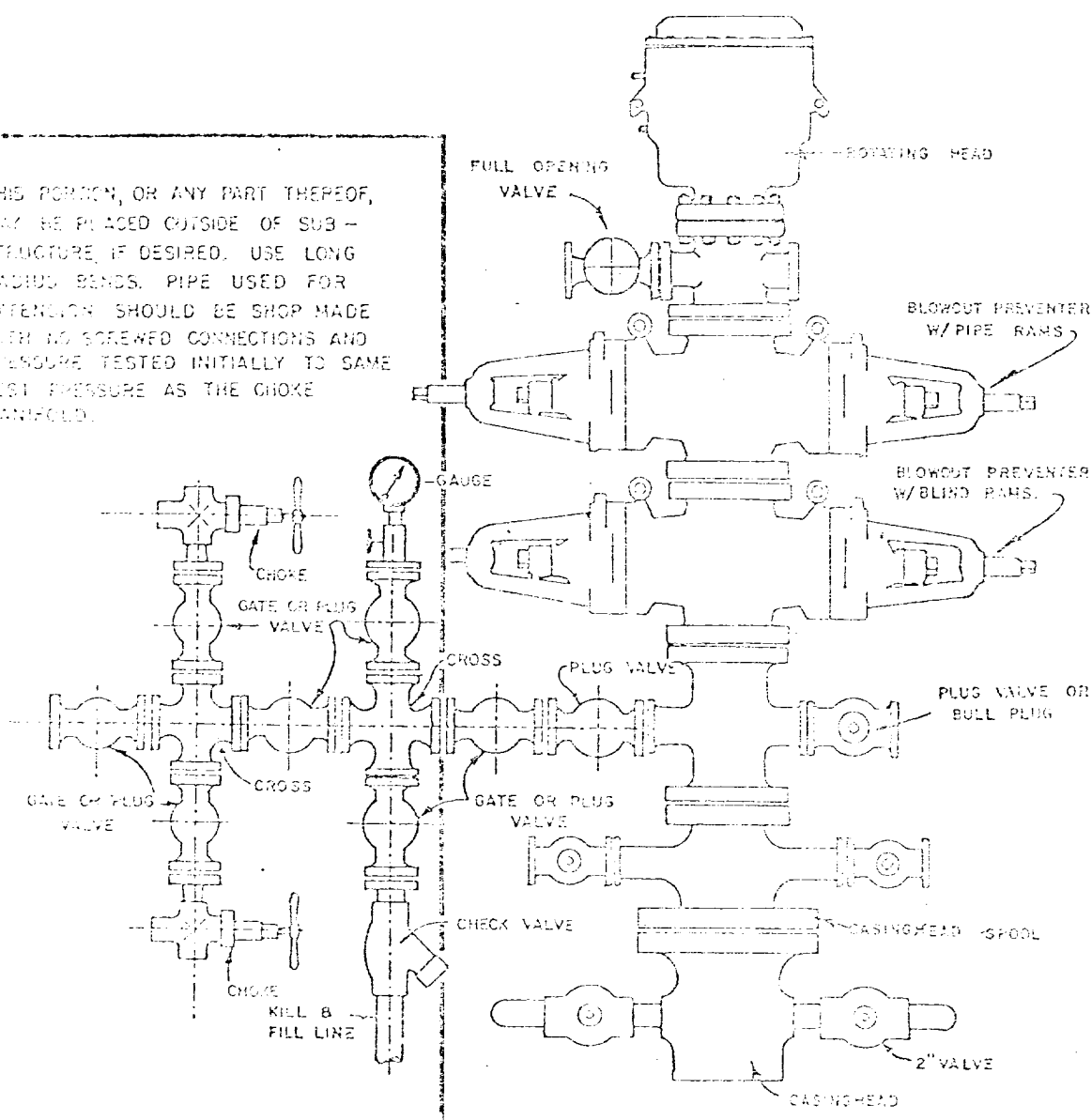
D. H. Shoemaker
Name
D. H. SHOEMAKER
Position
DISTRICT ENGINEER
Company
AMOCO PRODUCTION COMPANY
Date
JANUARY 5, 1983

I hereby certify that the well location shown on this plat was plotted from field notes of actual surveys made by me or under my supervision, and that the same is true and correct to the best of my knowledge and belief.

Date Surveyed
December 22, 1982
Registered Professional Engineer and Land Surveyor
Fred B. Ser Jr.
Fred B. Ser Jr.
Certification No. **10001**
3950

1. Blowout Preventers and Master Valve to be fluid operated, and all fittings must be in good condition.
2. Equipment through which bit must pass shall be as large as the inside diameter of the casing that is being drilled through.
3. Nipple above Blowout Preventer shall be same size or larger than BOP being drilled through.
4. All fittings to be flanged.
5. Omsco or comparable safety valve must be available on rig floor at all times with proper connection or sub. The I.D. of safety valve should be as great as I.D. of tool joints of drill pipe, or at least as great as I.D. of drill collars.

THIS PORTION, OR ANY PART THEREOF, MAY BE PLACED OUTSIDE OF SUB-STRUCTURE, IF DESIRED. USE LONG RADIUS BENDS. PIPE USED FOR EXTENSION SHOULD BE SHOP MADE WITH NO SCREWED CONNECTIONS AND ENSURE TESTED INITIALLY TO SAME TEST PRESSURE AS THE CHOKE MANIFOLD.



BLOWOUT PREVENTER HOOKUP

API Series # 900

EXHIBIT D-4

OCTOBER 16, 1959

Operation of BOP by closing both pipe and blind rams will be tested each trip on, on long bit runs, pipe rams will be closed once each 24 hours.