

UNITED STATES  
DEPARTMENT OF THE INTERIOR  
GEOLOGICAL SURVEY

30-045-25631

APPLICATION FOR PERMIT TO DRILL, DEEPEN, OR PLUG BACK

1a. TYPE OF WORK  
DRILL ☒ DEEPEN ☐ PLUG BACK ☐

b. TYPE OF WELL  
OIL WELL ☐ GAS WELL ☒ OTHER ☐  
SINGLE ZONE ☒ MULTIPLE ZONE ☐

2. NAME OF OPERATOR  
Tenneco Oil Company

3. ADDRESS OF OPERATOR  
Box 3249, Englewood, CO 80155

4. LOCATION OF WELL (Report location clearly and in accordance with any State requirements.)  
At surface 915' FNL, 2110' FWL

At proposed prod. zone

Same

14. DISTANCE IN MILES AND DIRECTION FROM NEAREST TOWN OR POST OFFICE\*

7 miles North of Aztec, New Mexico

10. DISTANCE FROM PROPOSED\*  
LOCATION TO NEAREST  
PROPERTY OR LEASE LINE, FT.  
(Also to nearest drlg. unit line, if any)

915'

18. DISTANCE FROM PROPOSED LOCATION\*  
TO NEAREST WELL, DRILLING, COMPLETED,  
OR APPLIED FOR, ON THIS LEASE, FT.

16. NO. OF ACRES ASSIGNED  
TO THIS WELL  
2201.83

19. PROPOSED DEPTH

7436'

17. NO. OF ACRES ASSIGNED  
TO THIS WELL

2312.58 320

20. ROTARY OR CABLE TOOLS

Rotary

21. ELEVATIONS (Show whether DF, RT, GR, etc.)

6124' GR

22. APPROX. DATE WORK WILL START\*

ASAP

23. PROPOSED CASING AND CEMENTING PROGRAM

SIZE OF HOLE	SIZE OF CASING	WEIGHT PER FOOT	SETTING DEPTH	QUANTITY OF CEMENT
12-1/4"	9-5/8"	36#	± 290'	Circ to surface
8-3/4"	7"	23#	± 5030'	2-stage - circ to surface
6-1/4"	4-1/2"	11.6#, 10.5#	± 7436'	Circ to liner top

See attached drilling procedure

Gas is dedicated

Approval for Unorthodox Location received from New Mexico Oil Conservation Div. 12/6/82

DRILLING OPERATIONS AUTHORIZED ARE  
SUBJECT TO COMPLIANCE WITH ATTACHED  
"GENERAL REQUIREMENTS"

This action is subject to administrative  
appeal pursuant to 30 CFR 290.

IN ABOVE SPACE DESCRIBE PROPOSED PROGRAM: If proposal is to deepen or plug back, give data on present productive zone and proposed new productive zone. If proposal is to drill or deepen directionally, give pertinent data on subsurface locations and measured and true vertical depths. Give blowout preventer program, if any.

24. SIGNED Ken Russell TITLE Sr. Production Analyst DATE Dec. 22, 1982

(This space for Federal or State office use)

PERMIT NO.

APPROVAL DATE

APPROVED BY  
CONDITIONS OF APPROVAL, IF ANY:

TITLE

APPROVED  
AS AMENDED

NSL 1626  
mS

NMOCC

MAR 14 1983  
JAMES F. SIMS  
DISTRICT ENGINEER

All distances must be from the outer boundaries of the Section.

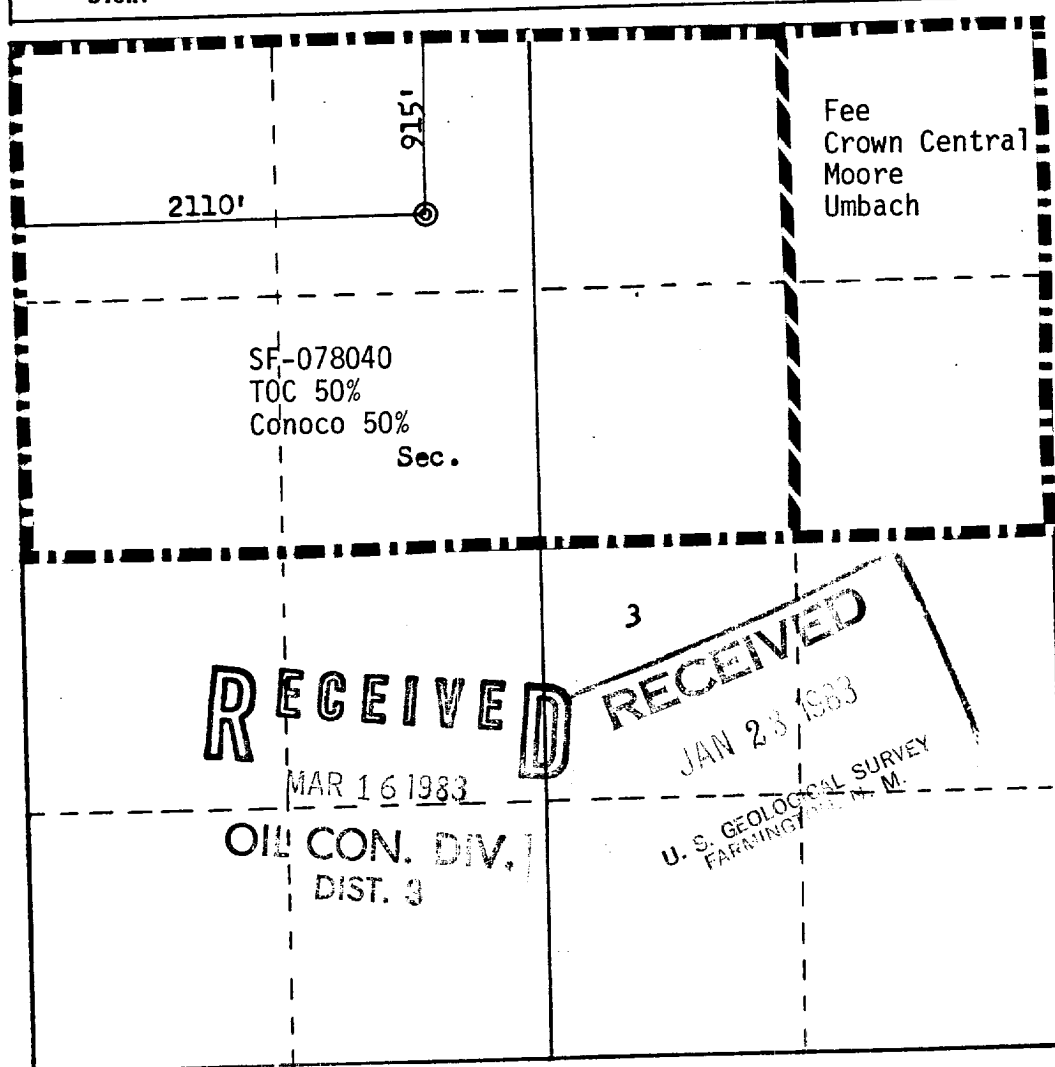
Operator: <b>TENNECO OIL COMPANY</b>		Lease: <b>CHILDERS COM</b>		Well No. <b>1</b>
Unit Letter <b>C</b>	Section <b>3</b>	Township <b>31N</b>	Range <b>11W</b>	County <b>San Juan</b>
Actual Footage Location of Well: <b>915</b> feet from the <b>North</b> line and <b>2110</b> feet from the <b>West</b> line				
Ground Level Elev: <b>6124</b>	Producing Formation <b>Dakota</b>	Pool <b>Basin Dakota</b>	Dedicated Acreage: <b>320 N. 312.50</b> acres	

1. Outline the acreage dedicated to the subject well by colored pencil or hachure marks on the plat below.
2. If more than one lease is dedicated to the well, outline each and identify the ownership thereof (both as to working interest and royalty).
3. If more than one lease of different ownership is dedicated to the well, have the interests of all owners been consolidated by communitization, unitization, force-pooling, etc?

☒ Yes ☐ No If answer is "yes," type of consolidation Communitization in progress

If answer is "no," list the owners and tract descriptions which have actually been consolidated. (Use reverse side of this form if necessary.) \_\_\_\_\_

No allowable will be assigned to the well until all interests have been consolidated (by communitization, unitization, forced-pooling, or otherwise) or until a non-standard unit, eliminating such interests, has been approved by the Commission.



#### CERTIFICATION

I hereby certify that the information contained herein is true and complete to the best of my knowledge and belief.

*Ken Russell*

Name

Ken Russell

Position

Sr. Production Analyst

Company

Tenneco Oil Co.

Date

January 24, 1983

I hereby certify that the well location shown on this plat was plotted from field notes of actual surveys made by me or under my supervision, and that the same is true and correct to the best of my knowledge and belief.

Date Surveyed

September 28, 1982

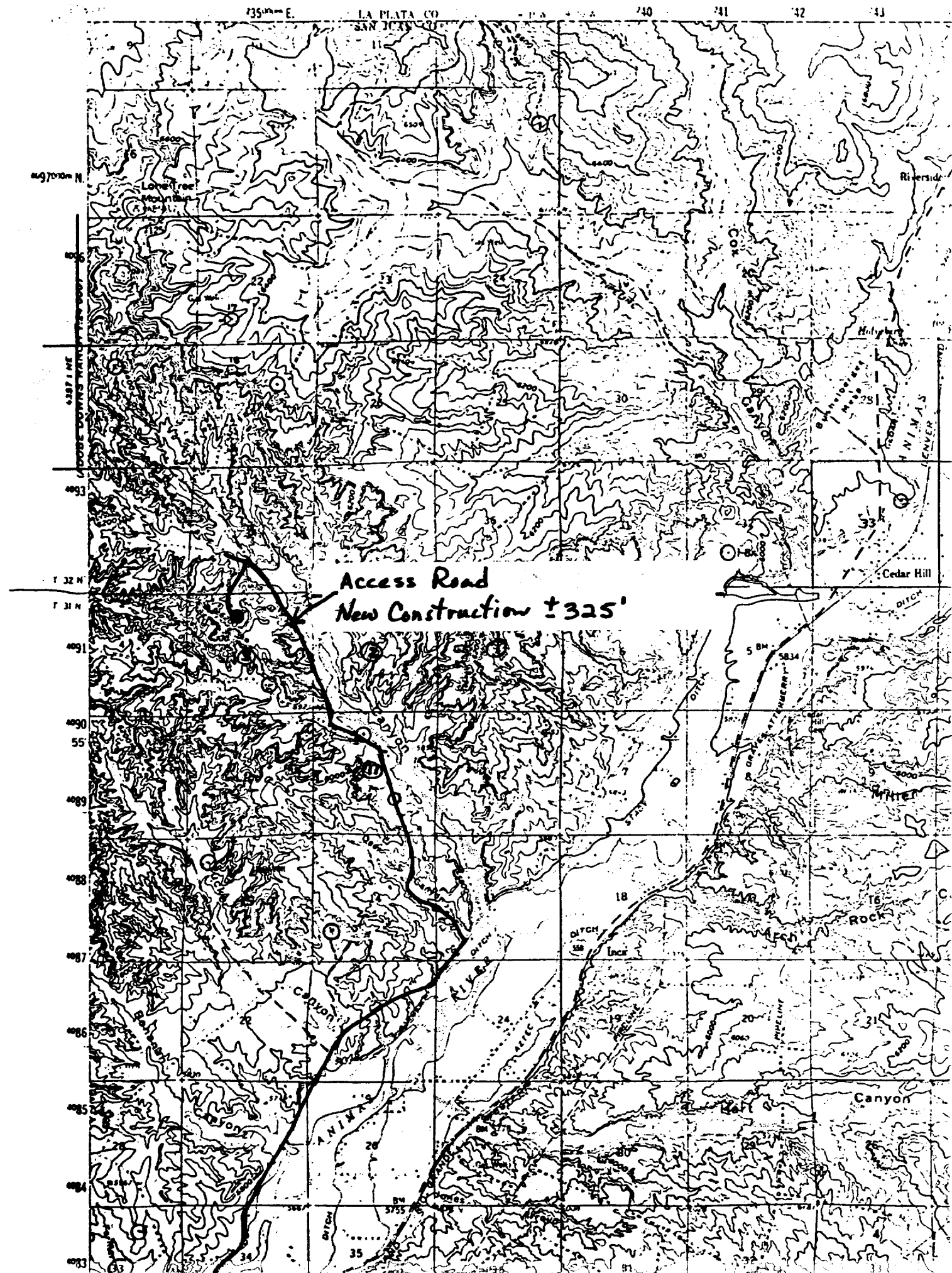
Registered Professional Engineer and Land Surveyor.

*Fred B. Kerr Jr.*  
Fred B. Kerr Jr.

Certificate No. 4222

1950

DEPARTMENT OF THE INTERIOR  
GEOLOGICAL SURVEY





STATE OF NEW MEXICO  
ENERGY AND MINERALS DEPARTMENT  
OIL CONSERVATION DIVISION

BRUCE KING  
GOVERNOR

LARRY KEHOE  
SECRETARY

December 6, 1982

POST OFFICE BOX 2088  
STATE LAND OFFICE BUILDING  
SANTA FE, NEW MEXICO 87501  
(505) 827-2434

Tenneco Oil Exploration  
and Production  
P. O. Box 3249  
Englewood, Colorado 80155

Attention: Ken Russell  
Senior Production Analyst

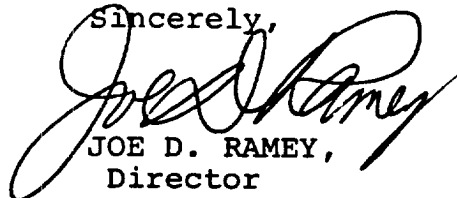
Administrative Order NSL-1626

Gentlemen:

Reference is made to your application for a non-standard location for your Childers Well No. 4 located 915 feet from the North line and 2110 feet from the West line of Section 3, Township 31 North, Range 11 West, NMPM, Basin Dakota Pool, San Juan County, New Mexico.

By authority granted me under the provisions of Rule 5(c)(3) of Order No. R-1670, the above-described unorthodox location is hereby approved.

Sincerely,



JOE D. RAMEY,  
Director

JDR/RLS/dr

cc: Oil Conservation Division - Aztec  
Oil & Gas Engineering Committee - Hobbs  
Minerals Management Service - Farmington



STATE OF NEW MEXICO  
ENERGY AND MINERALS DEPARTMENT  
OIL CONSERVATION DIVISION

BRUCE KING  
GOVERNOR

LARRY KEHOE  
SECRETARY

December 6, 1982

POST OFFICE BOX 2088  
STATE LAND OFFICE BUILDING  
SANTA FE, NEW MEXICO 87501  
(505) 827-2434

Tenneco Oil Exploration  
and Production  
P. O. Box 3249  
Englewood, Colorado 80155

Attention: Ken Russell  
Senior Production Analyst

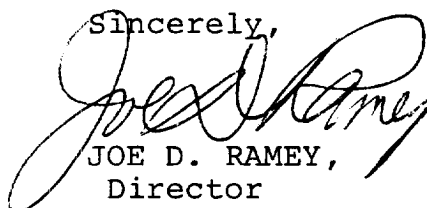
Administrative Order NSL-1626

Gentlemen:

Reference is made to your application for a non-standard location for your Childers Well No. 4 located 915 feet from the North line and 2110 feet from the West line of Section 3, Township 31 North, Range 11 West, NMPM, Basin Dakota Pool, San Juan County, New Mexico.

By authority granted me under the provisions of Rule 5(c)(3) of Order No. R-1670, the above-described unorthodox location is hereby approved.

Sincerely,



JOE D. RAMEY,  
Director

JDR/RLS/dr

cc: Oil Conservation Division - Aztec  
Oil & Gas Engineering Committee - Hobbs  
Minerals Management Service - Farmington



STATE OF NEW MEXICO  
ENERGY AND MINERALS DEPARTMENT

OIL CONSERVATION DIVISION  
AZTEC DISTRICT OFFICE

1000 RIO BRAZOS ROAD  
AZTEC, NEW MEXICO 87411  
(505) 334-6178

OIL CONSERVATION DIVISION  
BOX 2088  
SANTA FE, NEW MEXICO 87501

DATE 12-9-82

RE: Proposed MC \_\_\_\_\_  
Proposed DHC \_\_\_\_\_  
Proposed NSL ✓ \_\_\_\_\_  
Proposed SWD \_\_\_\_\_  
Proposed WFX \_\_\_\_\_  
Proposed PMX \_\_\_\_\_

Gentlemen:

I have examined the application dated 11-15-82  
for the Tenneco Childers #4 C-3-31N-11W  
Operator Lease and Well No. Unit, S-T-R

and my recommendations are as follows:

Approve  
\_\_\_\_\_  
\_\_\_\_\_  
\_\_\_\_\_  
\_\_\_\_\_  
\_\_\_\_\_

Yours truly,

Jeff A. Edmister

# Tenneco Oil Exploration and Production

A Tenneco Company

Western Rocky Mountain Division

P.O. Box 3249  
Englewood, Colorado 80155  
(303) 740-4800

Delivery Address:  
6061 South Willow Drive  
Englewood, Colorado

November 12, 1982

CERTIFIED MAIL  
Return Receipt Requested

New Mexico Oil Conservation Division  
P.O. Box 2088  
Santa Fe, NM 87501  
Attn: Joe D. Ramey

New Mexico Oil Conservation Division  
1000 Rio Brazos Road  
Aztec, NM 87401  
Attn: Frank Chavez

Application for Unorthodox Location  
Tenneco Childers #4  
915' FNL, 2110' FWL  
Sec. 3, T31N, R11W  
San Juan County, New Mexico

Gentlemen:

Attached in duplicate (to each office) are a well location plat (C-102) with an ownership plat for the above referenced well.

Due to steep topography, this well could not be located where it conforms to state spacing requirements. This is the only topographic and geologic site available.

A copy of this application is being submitted to all offset operators by certified mail with a request that they furnish your Santa Fe office with a waiver of objection.

Pursuant to the authority of Rule 104-F we respectfully request your approval of an exemption to the standard well location requirements.

Yours very truly,

TENNECO OIL COMPANY

*Ken Russell*  
Ken Russell  
Senior Production Analyst

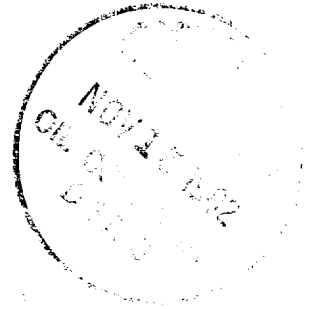
KR/ch  
Enclosures

## W A I V E R

\_\_\_\_\_ hereby waives objection to Tenneco Oil Company's application for unorthodox location for their Tenneco Childers #4, proposed above.

BY: \_\_\_\_\_

DATE: \_\_\_\_\_



OFFSET OPERATORS

Tenneco Childers #4  
915' FNL, 2110' FWL  
Sec. 3, T31N, R11W  
San Juan County, New Mexico

El Paso Natural Gas  
Box 990  
Farmington, New Mexico

Attention: Carl E. Matthews

Kimbark Oil & Gas Co.  
1580 Lincoln Street, Suite 700  
Denver, CO 80203

Attention: Bruce N. Burley

Southlans Royalty Co.  
Bloomfield Highway  
Farmington, NM 87401

Attention: C. C. Parsons



## OIL CONSERVATION DIVISION

P. O. BOX 2088

SANTA FE, NEW MEXICO 87501

Form C-107  
Revised 10-1-78

STATE OF NEW MEXICO

ENERGY AND MINERALS DEPARTMENT

All distances must be from the outer boundaries of the Section.

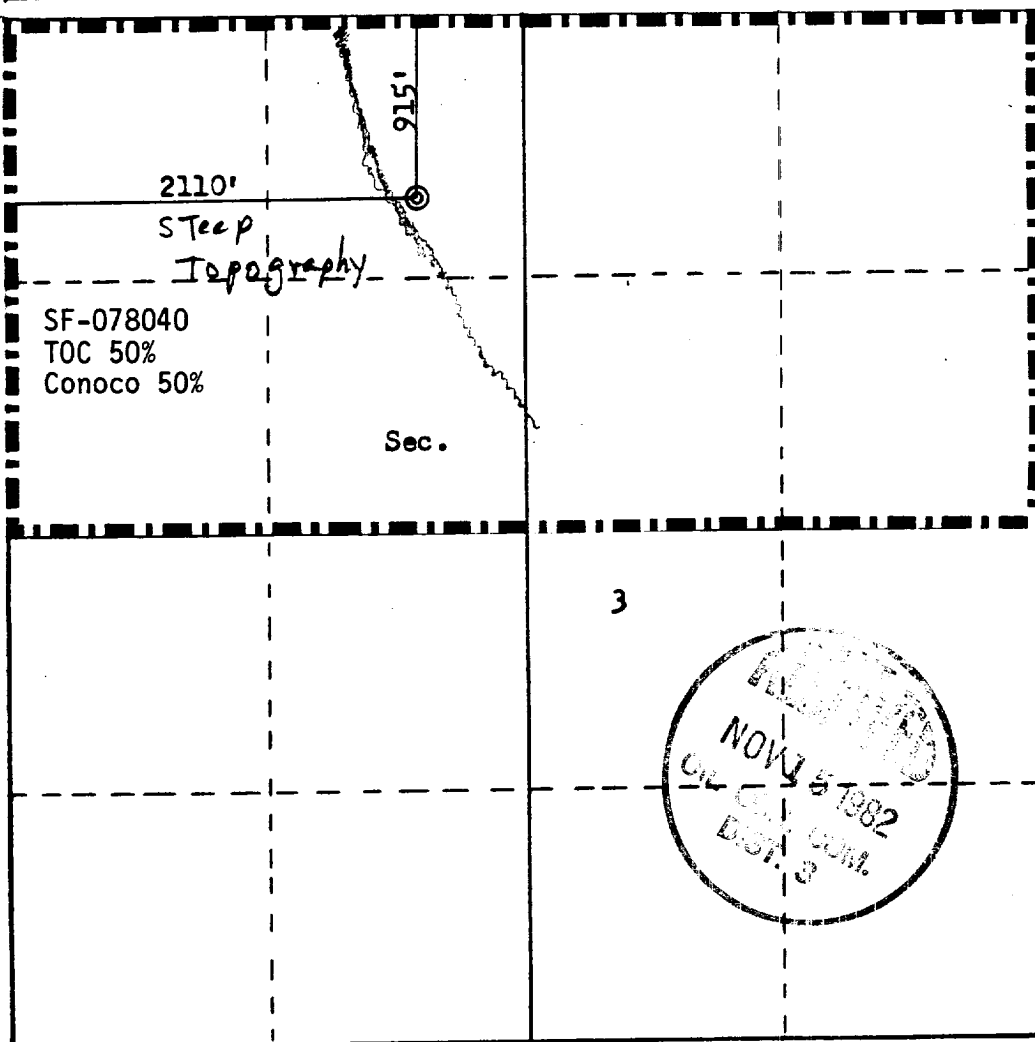
Operator <b>TENNECO OIL COMPANY</b>			Lease <b>CHILDERS</b>		Well No. <b>4</b>
Unit Letter <b>C</b>	Section <b>3</b>	Township <b>31N</b>	Range <b>11W</b>	County <b>San Juan</b>	
Actual Footage Location of Well: <b>915</b> feet from the <b>North</b> line and <b>2110</b> feet from the <b>West</b> line					
Ground Level Elev. <b>6124</b>	Producing Formation <b>Dakota</b>		Pool <b>Basin Dakota</b>		Dedicated Acreage: <b>320</b> Acres

1. Outline the acreage dedicated to the subject well by colored pencil or hachure marks on the plat below.
2. If more than one lease is dedicated to the well, outline each and identify the ownership thereof (both as to working interest and royalty).
3. If more than one lease of different ownership is dedicated to the well, have the interests of all owners been consolidated by communitization, unitization, force-pooling, etc?

☐ Yes ☐ No If answer is "yes," type of consolidation \_\_\_\_\_

If answer is "no," list the owners and tract descriptions which have actually been consolidated. (Use reverse side of this form if necessary.) \_\_\_\_\_

No allowable will be assigned to the well until all interests have been consolidated (by communitization, unitization, forced-pooling, or otherwise) or until a non-standard unit, eliminating such interests, has been approved by the Commission.



## CERTIFICATION

I hereby certify that the information contained herein is true and complete to the best of my knowledge and belief.

*Ken Russell*  
Name  
Ken Russell  
Position  
Sr. Production Analyst  
Company  
Tenneco Oil Company  
Date  
November 12, 1982

I hereby certify that the well location shown on this plat was plotted from field notes of actual surveys made by me or under my supervision, and that the same is true and correct to the best of my knowledge and belief.

Date Surveyed  
September 28, 1982  
Registered Professional Engineer and Land Surveyor  
*Fred B. Kerr Jr.*  
Fred B. Kerr Jr.  
Certificate No. 4000

