

NO. OF COPIES RECEIVED	
DISTRIBUTION	
SANTA FE	
FILE	
U.S.G.S.	
LAND OFFICE	
OPERATOR	

NEW MEXICO OIL CONSERVATION COMMISSION

RECEIVED

MAR 01 1984

OIL CON. DIV.
DIST. 3

Form C-101
Revised 1-1-65

5A. Indicate Type of Lease	
STATE <input type="checkbox"/>	FEE <input checked="" type="checkbox"/>
5. State Oil & Gas Lease No.	
7. Unit Agreement Name	
8. Farm or Lease Name Lawson	
9. Well No. 5	
10. Field and Pool, or Wildcat Basin Dakota	
12. County San Juan	
19. Proposed Depth 7160	19A. Formation Dakota
20. Rotary or C.T. Rotary	
21. Elevations (Show whether DF, RT, etc.) 5833' GL	21A. Kind & Status Plug. Bond ---
21B. Drilling Contractor ---	22. Approx. Date Work will start March 15, 1984

1a. Type of Work	
b. Type of Well DRILL <input checked="" type="checkbox"/> DEEPEN <input type="checkbox"/> PLUG BACK <input type="checkbox"/> OIL WELL <input type="checkbox"/> GAS WELL <input checked="" type="checkbox"/> OTHER <input type="checkbox"/> SINGLE ZONE <input checked="" type="checkbox"/> MULTIPLE ZONE <input type="checkbox"/>	
2. Name of Operator Southland Royalty Company	
3. Address of Operator P.O. Drawer 570, Farmington, New Mexico 87499	
4. Location of Well UNIT LETTER <u>L</u> LOCATED <u>1490</u> FEET FROM THE <u>South</u> LINE AND <u>1060</u> FEET FROM THE <u>West</u> LINE OF SEC. <u>12</u> TWP. <u>31N</u> RGE. <u>11W</u> NMPM	
21. Elevations (Show whether DF, RT, etc.) 5833' GL	
21A. Kind & Status Plug. Bond ---	
21B. Drilling Contractor ---	
22. Approx. Date Work will start March 15, 1984	

PROPOSED CASING AND CEMENT PROGRAM

SIZE OF HOLE	SIZE OF CASING	WEIGHT PER FOOT	SETTING DEPTH	SACKS OF CEMENT	EST. TOP
12-1/4"	New 9-5/8"	32.30#, H-40	220'	142 cu.ft.	Circ to surface
8-3/4"	New 7"	23#, K-55	4800'	Stge 1: 136 cf	Cover Cliff House
6-1/4"	New 4-1/2"	10.50#, K-55	4650'-6500'	Stge 2: 437 cf	Cover Ojo Alamo
6-1/4"	New 4-1/2"	11.60#, K-55	6500'-7160'	444 cu.ft.	Circ to liner

Surface formation is Nacimiento.

Top of Ojo Alamo sand is at 815'.

Top of Pictured Cliffs is at 2575'.

Fresh water mud will be used from surface to intermediate TD and an air system from intermediate TD to 5850', and from 5850' to total depth 50/50 air-nitrogen will be used.

It is anticipated that an IES will be run from intermediate TD to surface casing, an GR-Density will be run from intermediate TD to 2000', and an GR-Density and an GR-Induction will be run from total depth to intermediate total depth.

No abnormal pressures or poisonous gases are anticipated in this well.

It is expected that this well will be drilled before March 31, 1984.

This depends on time required for approvals, rig availability and the weather.
Gas is dedicated.

IN ABOVE SPACE DESCRIBE PROPOSED PROGRAM: IF PROPOSAL IS TO DEEPEN OR PLUG BACK, GIVE DATA ON PRESENT PRODUCTIVE ZONE AND PROPOSED NEW PRODUCTIVE ZONE. GIVE BLOWOUT PREVENTER PROGRAM, IF ANY.

I hereby certify that the information above is true and complete to the best of my knowledge and belief.

Signed R. E. Fields Title District Engineer Date 2-27-84

(This space for State Use)

APPROVED BY Frank J. King TITLE SUPERVISOR DISTRICT # 3 DATE MAR 1 1984

CONDITIONS OF APPROVAL, IF ANY:

APPROVAL EXPIRES 9-3-84
UNLESS DRILLING IS COMMENCED,
SPUD NOTICE MUST BE SUBMITTED
WITHIN 10 DAYS.

OIL CONSERVATION DIVISION

P. O. BOX 2088

SANTA FE, NEW MEXICO 87501

Form C-107
Revised 10-1-78STATE OF NEW MEXICO
ENERGY AND MINERALS DEPARTMENT

All distances must be from the outer boundaries of the Section.

Operator SOUTHLAND ROYALTY COMPANY			Lease LAWSON		Well No. 5
Unit Letter L	Section 12	Township 31N	Range 11W	County San Juan	
Actual Footage Location of Well: 11490 feet from the South line and 1060 feet from the West line					
Ground Level Elev: 5833' GL	Producing Formation Dakota		Pool Basin	Dedicated Acreage: 320 Acres	

1. Outline the acreage dedicated to the subject well by colored pencil or hatchure marks on the plat below.
2. If more than one lease is dedicated to the well, outline each and identify the ownership thereof (both as to working interest and royalty).
3. If more than one lease of different ownership is dedicated to the well, have the interests of all owners been consolidated by communitization, unitization, force-pooling, etc?

☐ Yes ☐ No If answer is "yes," type of consolidation Communitization

If answer is "no," list the owners and tract descriptions which have actually been consolidated. (Use reverse side of this form if necessary.) _____

No allowable will be assigned to the well until all interests have been consolidated (by communitization, unitization, forced-pooling, or otherwise) or until a non-standard unit, eliminating such interests, has been approved by the Commission.

SF-078040		RECEIVED MAR 01 1984 OIL CON. DIV. DIST. 3	
Sec.		12	
FEE 1060'		SF-078040	
11490'			

Scale: 1"=1000'

CERTIFICATION

I hereby certify that the information contained herein is true and complete to the best of my knowledge and belief.

R. E. Fielder

Name

R. E. Fielder

Position

District Engineer

Company

Southland Royalty Company

Date

2-27-84

I hereby certify that the well location shown on this plat was plotted from field notes of actual surveys made by me or under my supervision, and that the same is true and correct to the best of my knowledge and belief.

Date Surveyed

December 9, 1983

Registered Professional Engineer
and Land Surveyor

Fred B. Kerr Jr.
Fred B. Kerr Jr.

Certificate No.

3950

SOUTHLAND ROYALTY COMPANY - DRILLING SCHEDULE

LAWSON #5

1490' FSL & 1060' FWL
Section 12, T31N, R11W
San Juan County, New Mexico

Field: Basin Dakota Elevation: 5833' GL
5845' KB

Geology:

Formation Tops:	Ojo Alamo	815'	Point Lookout	4845'
	Fruitland	2145'	Gallup	5915'
	Pictured Cliffs	2575'	Graneros	6890'
	Cliff House	4235'	Dakota	6942'
	Intermediate TD	4800'	Total Depth	7160'

Logging Program: IES from intermediate total depth to surface casing.
GR-Density from intermediate total depth to 4100' and 2700' to 2000'.
GR-Induction and GR-Density from total depth to intermediate total depth.

Natural Gauges: Gauge any increase in gas flow.

Drilling:

Contractor:		Tool Pusher:	
SRC Rep:	Max Larsons	SRC Answering Service:	325-1841
		Dispatch Number:	325-7391

Mud Program: Fresh water mud from surface to intermediate total depth.
Air from intermediate total depth to 5850'. From 5850' to total depth use 50/50 air-nitrogen mixture.

Materials:

Casing Program:	<u>Hole Size</u>	<u>Depth Set</u>	<u>Casing Size</u>	<u>Weight & Grade</u>
	12-1/4"	220'	9-5/8"	32.30# H-40
	8-3/4"	4800'	7"	23# K-55
	6-1/4"	4650'-6500'	4-1/2"	10.50# K-55
	6-1/4"	6500'-7160'	4-1/2"	11.60# K-55

Float Equipment:

9-5/8" Surface Casing: Bakerline, Texas Pattern, Guide Shoe.

7" Intermediate Casing: Bakerline cement nosed guide shoe. Bakerline self-fill float collar. Run float 2 joints above shoe. Run (5) five centralizers one on shoe joint, then every other joint. Run stage collar at \pm 2750' with a cement basket below and five (5) centralizers every other joint above tool.

4-1/2" Liner: Bakerline guide shoe. Bakerline flapper float collar one joint above shoe. liner hanger with neoprene pack off.

Wellhead Equipment: 9-5/8" X 10", 2000# casing head with 7" casing hanger. 10", 2000# X 6", 3000# tubing head and tree.

Cement Program:

9-5/8" Surface Casing: 120 sacks (142 cu.ft.) of Class "B" with 1/4# flocele per sack and 3% CaCl_2 . WOC 12 hours. Test to 1000 psi prior to drilling out. (Volume is 100% excess to circulate.)

7" Intermediate Casing: Stage 1:
115 sacks (136 cu.ft.) of Class "H" neat with 2% CaCl_2 . (Volume is 50% excess to cover Cliff House.)

Stage 2:
225 sacks (378 cu.ft.) 65/35 Poz of Class "H" with 3% gel, 12-1/2# gilsonite per sack, 5.6# salt per sack and 8.2# Cal Seal per sack, follow with 50 sacks (59 cu.ft.) of Class "H" neat with 2% CaCl_2 . (Volume is 50% excess to cover Ojo Alamo.)

WOC 12 hours. Test to 1000 psi prior to drilling out.

4-1/2" Liner: 300 sacks (444 cu.ft.) of Class "B" 50/50 Poz with 6% gel, 1/4# flocele per sack, .6% Halad 9 and .5% CFR-2. (Volume is 70% excess to circulate liner.)

Precede cement with 20 bbls of chemical wash.

C. C. Parsons
District Production Manager

February 27, 1984



Mr. Frank Chavez
Oil Conservation Division
1000 Rio Brazos Road
Aztec, New Mexico 87410

RE: Blowout Preventer Plan

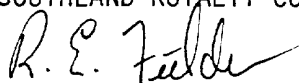
Dear Mr. Chavez:

All drilling and completion rigs will be equipped with 6" or larger double gate hydraulic blowout preventers and a hydraulic operated closing unit with steel lines.

The preventer is 3000# working pressure and 6000# test pressure. All crews will be thoroughly trained in the operation of this preventer. The preventer will be tested frequently enough to ensure proper operation.

Sincerely,

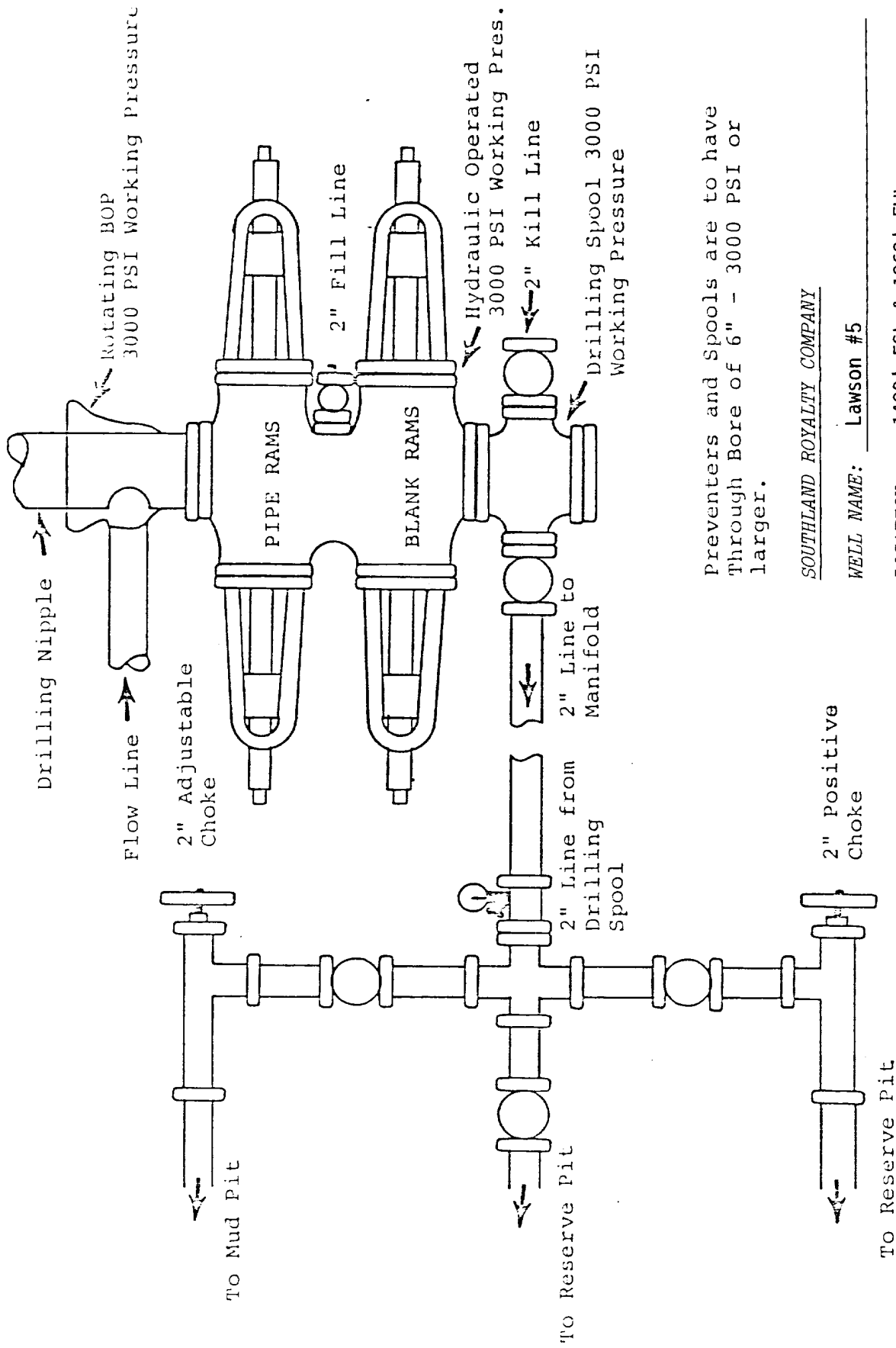
SOUTHLAND ROYALTY COMPANY



R. E. Fielder
District Engineer

REF/eg

Attachment



Preventers and Spools are to have Through Bore of 6" - 3000 PSI or larger.

SOUTHLAND ROYALTY COMPANY

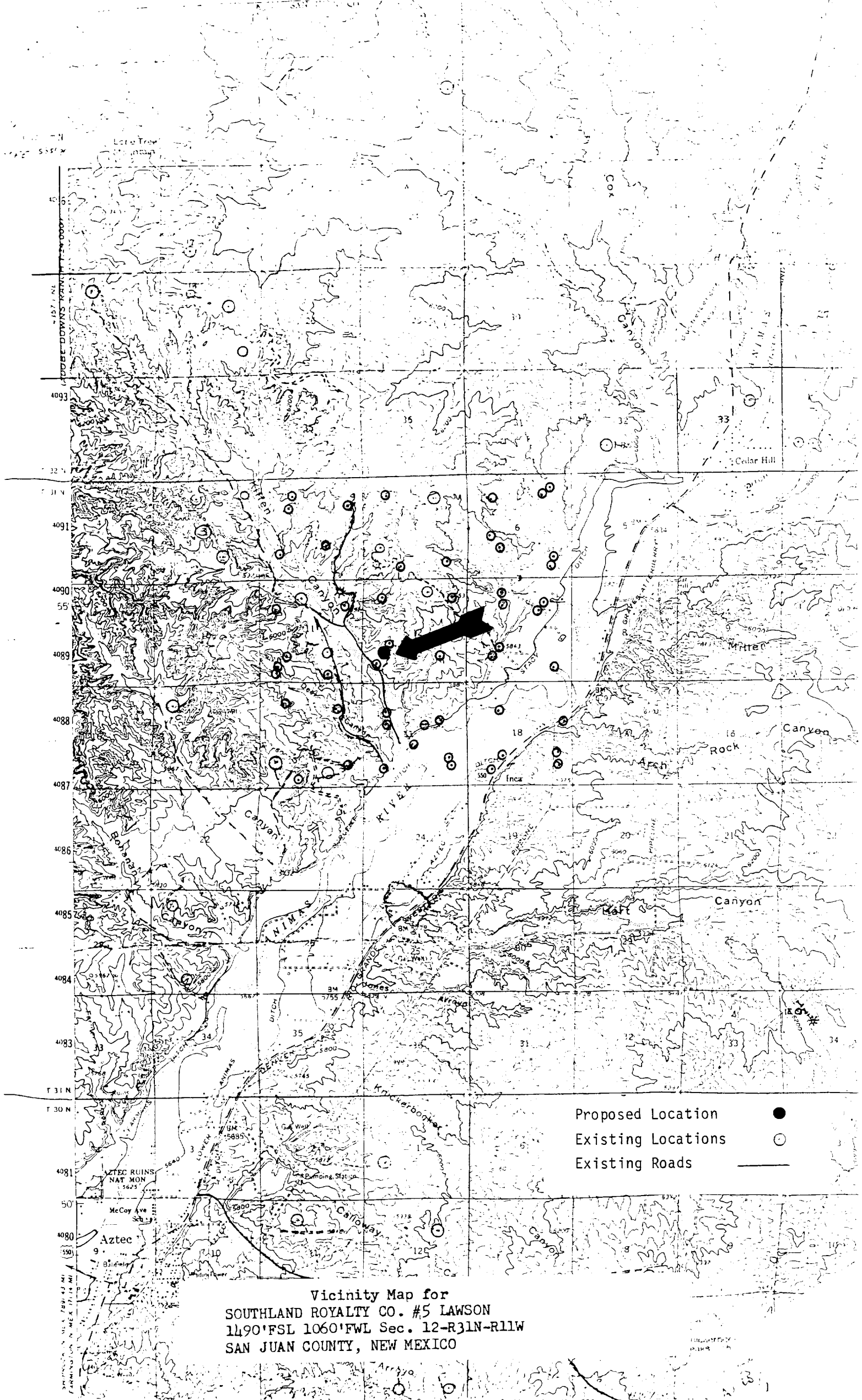
WELL NAME: Lawson #5

LOCATION: 1490' FSL & 1060' FWL

Section 12, T31N, R11W

COUNTY: San Juan

STATE: New Mexico



Vicinity Map for
SOUTHLAND ROYALTY CO. #5 LAWSON
1490'FSL 1060'FWL Sec. 12-R31N-R11W
SAN JUAN COUNTY, NEW MEXICO

Profile for
 SOUTHLAND ROYALTY CO. #5 LAWSON
 11,901 FSL 10601 FWL Sec. 12-T31N-R11W
 SAN JUAN COUNTY, NEW MEXICO

