

UNITED STATES
DEPARTMENT OF THE INTERIOR

GEOLOGICAL SURVEY

APPLICATION FOR PERMIT TO DRILL, DEEPEN, OR PLUG BACK

1a. TYPE OF WORK

DRILL ☒DEEPEN ☐PLUG BACK ☐

b. TYPE OF WELL

OIL
WELL ☐GAS
WELL ☒

OTHER

SINGLE
ZONE ☐MULTIPLE
ZONE ☐

2. NAME OF OPERATOR

BASIN MINERALS, INC.

3. ADDRESS OF OPERATOR c/o Walsh Engineering & Production Corp.

P.O. Drawer 419, Farmington, NM 87499

4. LOCATION OF WELL (Report location clearly and in accordance with any State requirements.)

At surface

950' FSL, 1005' FWL

At proposed prod. zone Same

14. DISTANCE IN MILES AND DIRECTION FROM NEAREST TOWN OR POST OFFICE*

3 miles NW of Aztec, New Mexico

15. DISTANCE FROM PROPOSED*

LOCATION TO NEAREST

PROPERTY OR LEASE LINE, FT.

(Also to nearest drlg. unit line, if any)

950'

18. DISTANCE FROM PROPOSED LOCATION*

TO NEAREST WELL, DRILLING, COMPLETED,
OR APPLIED FOR, ON THIS LEASE, FT.

3000'

21. ELEVATIONS (Show whether DF, RT, GR, etc.)

5801' G.R.

23.

DRILLING OPERATIONS AUTHORIZED ARE
SUBJECT TO COMPLIANCE WITH ATTACHED
"GENERAL REQUIREMENTS"

"GENERAL REQUIREMENTS"

This action is subject to administrative
appeal pursuant to 30 CFR 290.

SIZE OF HOLE	SIZE OF CASING	WEIGHT PER FOOT	SETTING DEPTH	QUANTITY OF CEMENT
12-1/4"	9-5/8"	36.0	250'	295 cu. ft.
8-3/4"	7"	20.0	2900'	770 cu. ft. (To surface)
6-1/4"	4-1/2"	10.50	2700'-5200'	350 cu. ft.

It is proposed to drill this well and complete in the Mesa Verde Formation.

EXHIBITS

"A" Location and elevation plat
"B" Ten Point Compliance Program
"C" Blowout Preventer Diagram
"D" Multi-Point Requirements for APD

"E" Access Road to location
"F" Radius Map of Field
"G" Drill Rig Layout
"I" Location Profile

The gas from this well is committed.

The W/2 of Section 27 is dedicated to this well.

IN ABOVE SPACE DESCRIBE PROPOSED PROGRAM: If proposal is to deepen or plug back, give data on present productive zone and proposed new productive zone. If proposal is to drill or deepen directionally, give pertinent data on subsurface locations and measured and true vertical depths. Give blowout preventer program, if any.

24. FOR: BASIN MINERALS, INC.

SIGNED

Ewell N. Walsh, P.E.

President, Walsh Engineering &
Production Corporation

TITLE

DATE July 6, 1984

(This space for Federal or State office use)

PERMIT NO.

APPROVAL DATE

APPROVED BY

TITLE

CONDITIONS OF APPROVAL, IF ANY:

APPROVED
AS AMENDED

JUL 16 1984

J. Stan McKee

M. MILLENBACH
AREA MANAGER

*See Instructions On Reverse Side

All distances must be from the outer boundaries of the Section.

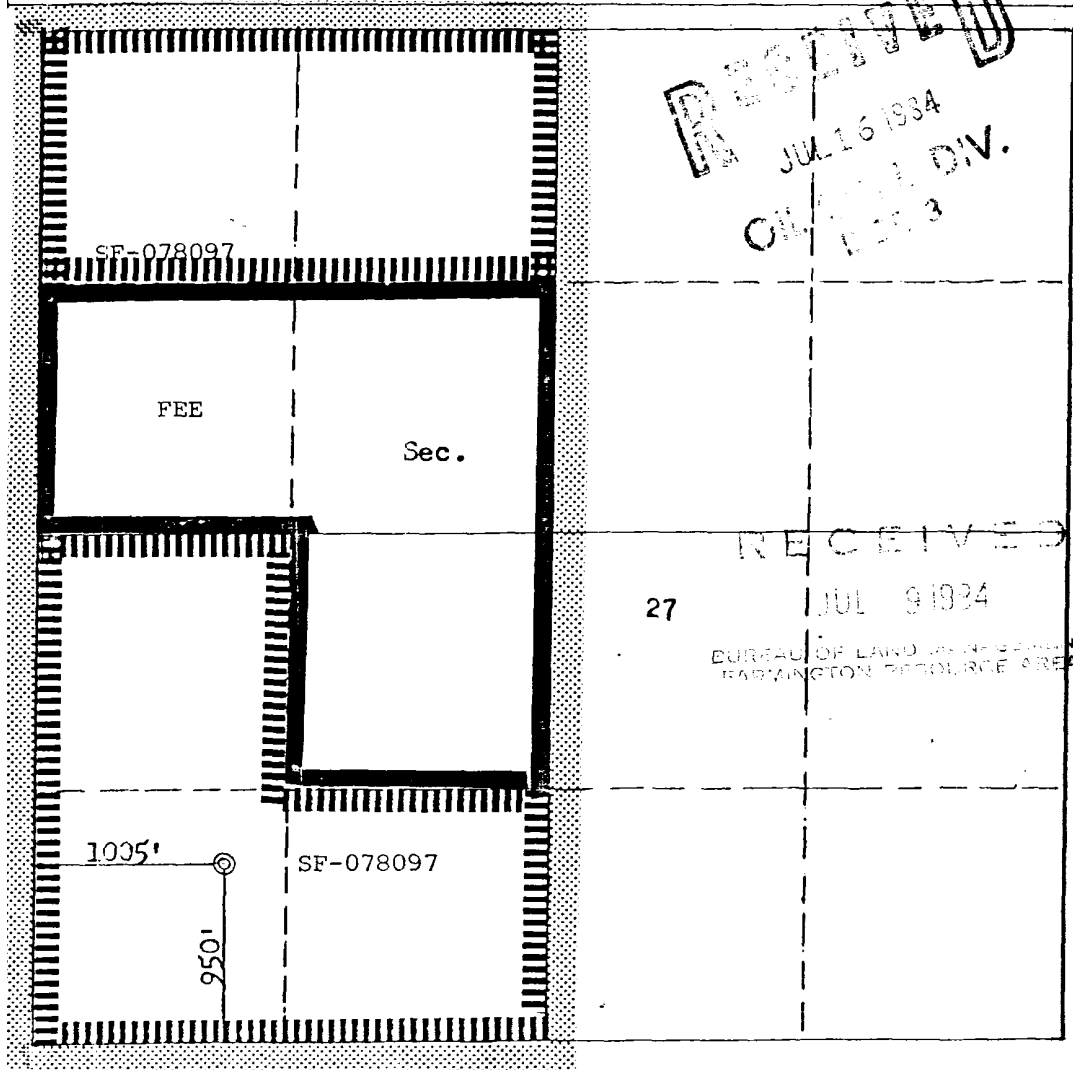
Operator BASIN MINERALS, INCORPORATED			Lease FEDERAL		Well No. 100-A
Unit Letter M	Section 27	Township 31N	Range 11W	County San Juan	
Actual Footage Location of Well: 950 feet from the South line and 1005 feet from the West line					
Ground Level Elev. 5801	Producing Formation Mesa Verde		Pool Blanco Mesa Verde		Dedicated Acreage 320 Acres

1. Outline the acreage dedicated to the subject well by colored pencil or hatchure marks on the plat below.
2. If more than one lease is dedicated to the well, outline each and identify the ownership thereof (both as to working interest and royalty).
3. If more than one lease of different ownership is dedicated to the well, have the interests of all owners been consolidated by communitization, unitization, force-pooling, etc?

☒ Yes ☐ No If answer is "yes," type of consolidation Force Pooling Order No. R-7311

If answer is "no," list the owners and tract descriptions which have actually been consolidated. (Use reverse side of this form if necessary.)

No allowable will be assigned to the well until all interests have been consolidated (by communitization, unitization, forced-pooling, or otherwise) or until a non-standard unit, eliminating such interests, has been approved by the Commission.



CERTIFICATION

I hereby certify that the information contained herein is true and complete to the best of my knowledge and belief.

FOR: **BASIN MINERALS, INC.**

SIGNED BY

EWELL N. WALSH

Name

Ewell N. Walsh, P.E.

Position

President

Company **Walsh Engineering & Production Corp.**

Date

July 5, 1984

I hereby certify that the well location shown on this plat was plotted from field notes of actual surveys made by me or under my supervision, and that the same is true and correct to the best of my knowledge and belief.

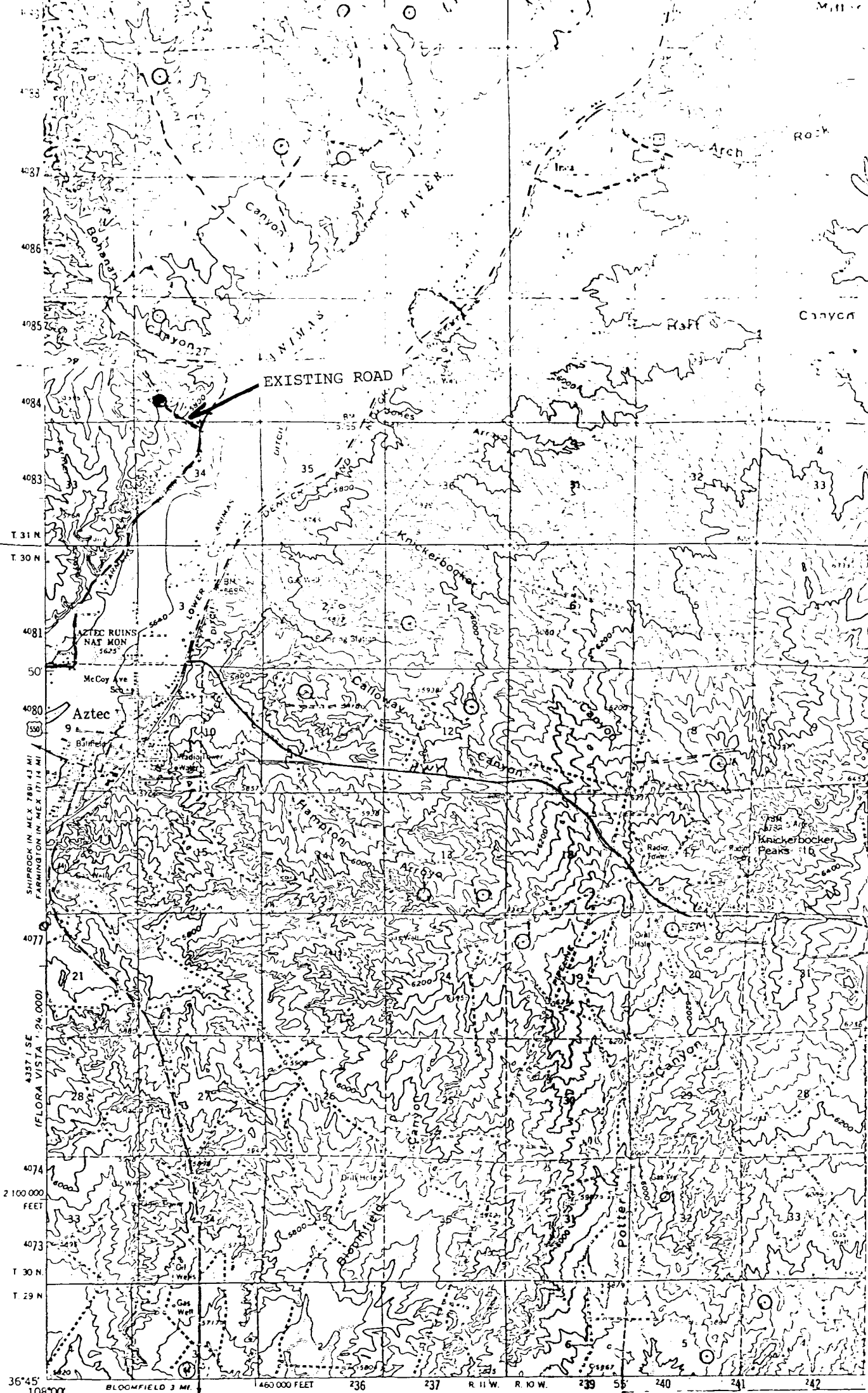
Date Surveyed

July 3, 1984

Registered Professional Engineer and Land Surveyor

Fred E. Kerr Jr.

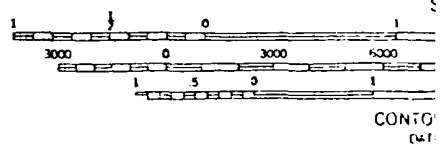
Certificate No. **4222**
2000



4357 II NE
HORN CANYON
1:24,000

Mapped, edited, and published by the Geological Survey
Control by USGS and USC&GS
Topography by photogrammetric methods from aerial
photographs taken 1955. Field checked 1959
Polyconic projection 1927 Nor
10,000 foot grid based on New
west zone
1000 meter Universal Transvers
zone 13 shown in blue
Red tint indicates area in which o
Land lines omitted in parts of T
because of insufficient data

EXHIBIT "E"
Vicinity Map for
BASIN MINERALS INCORPORATED #100a FEDERAL
950' FSL 1005' FWL Sec. 27-T31N-R11W
SAN JUAN COUNTY, NEW MEXICO



THIS MAP COMPLETES WITH
U. S. GEOLOGICAL SURVEY, I
A FOLDER DESCRIBING TOPOGRAPHY