

UNITED STATES  
DEPARTMENT OF THE INTERIOR  
BUREAU OF LAND MANAGEMENT

SUBMIT IN TRIPLICATE\*  
(Other instructions on  
reverse side)

Form approved.  
Budget Bureau No. 1004-0136  
Expires August 31, 1985

APPLICATION FOR PERMIT TO DRILL, DEEPEN, OR PLUG BACK

1a. TYPE OF WORK

DRILL ☒

DEEPEN ☐

PLUG BACK ☐

b. TYPE OF WELL

OIL  
WELL ☐

GAS  
WELL ☒

OTHER

SINGLE  
ZONE ☒

MULTIPLE  
ZONE ☐

2. NAME OF OPERATOR

Southland Royalty Company

3. ADDRESS OF OPERATOR

P. O. Drawer 570, Farmington, New Mexico 87499

4. LOCATION OF WELL (Report location clearly and in accordance with any State requirements.)\*

At surface

875' FNL & 1790' FEL

At proposed prod. zone

14. DISTANCE IN MILES AND DIRECTION FROM NEAREST TOWN OR POST OFFICE\*

6 miles South of Ignacio, Colorado

15. DISTANCE FROM PROPOSED\*

LOCATION TO NEAREST

PROPERTY OR LEASE LINE, FT.

(Also to nearest drlg. unit line, if any)

875'

18. DISTANCE FROM PROPOSED LOCATION\*

TO NEAREST WELL, DRILLING, COMPLETED,

OR APPLIED FOR, ON THIS LEASE, FT.

300'

21. ELEVATIONS (Show whether DF, RT, GR, etc.)

7017' GL

DRILLING OPERATIONS AUTHORIZED ARE  
SUBJECT TO COMPLIANCE WITH ATTACHED

"GENERAL REQUIREMENTS"  
PROPOSED CASING AND CEMENTING PROGRAM

23.

SIZE OF HOLE	SIZE OF CASING	WEIGHT PER FOOT	SETTING DEPTH	QUANTITY OF CEMENT
12-1/4"	New 8-5/8"	24#, K-55	300'	283 cu.ft. (Circ to surface)
7-7/8"	New 4-1/2"	10.5#, K-55	4130'	714 cu.ft. (Cover Ojo Alamo)

Surface formation is San Jose.

Top of Ojo Alamo sand is at 2300'.

Top of Pictured Cliffs sand is at 3750'.

Fresh water mud will be used to drill from surface to Total Depth.

It is anticipated that an IEL will be run from total depth to surface casing, and a GR-Density will be run from total depth to surface casing.

No abnormal pressures or poisonous gases are anticipated in this well.

It is expected that this well will be drilled before July 1, 1984.

This depends on time required for approvals, rig availability and the weather.

Gas is not dedicated.

IN ABOVE SPACE DESCRIBE PROPOSED PROGRAM: If proposal is to deepen or plug back, give data on present productive zone and proposed new productive zone. If proposal is to drill or deepen directionally, give pertinent data on subsurface locations and measured and true vertical depths. Give blowout preventer program, if any.

SIGNED

TITLE District Engineer

(This space for Federal or State office use)

PERMIT NO.

APPROVAL DATE

APPROVED BY

CONDITIONS OF APPROVAL

TITLE

FARMINGTON COPY

\*See Instructions On Reverse Side

APPROVED JUN 22 1984

AS AMENDED

JUN 26 1984

SP James E. Edwards Jr.  
Acting AREA MANAGER  
FARMINGTON RESOURCE AREA

OIL CON. DIV.  
DIST. 3

RECEIVED  
SEP 13 1984

## OIL CONSERVATION DIVISION

NEW MEXICO  
MINERALS DEPARTMENT

P. O. BOX 2088

SANTA FE, NEW MEXICO 87501

Form C-107  
Revised 10-1-78

All distances must be from the outer boundaries of the Section.

Operator Southland Royalty Company			Lease Reese Mesa		Well No. 10
Well Letter J(101 11)	Section 10	Township 32N	Range 8W	County San Juan	
Actual Footage Location of Well: 875 feet from the North line and 1790 feet from the East line					
Ground Level Elev. 7017' GL	Producing Formation Pictured Cliffs	Pool Albino		Dedicated Acreage 158.35 Acres	

1. Outline the acreage dedicated to the subject well by colored pencil or hatchure marks on the plat below.
2. If more than one lease is dedicated to the well, outline each and identify the ownership thereof (both as to working interest and royalty).
3. If more than one lease of different ownership is dedicated to the well, have the interests of all owners been consolidated by communitization, unitization, force-pooling, etc?

☐ Yes ☐ No If answer is "yes," type of consolidation \_\_\_\_\_

If answer is "no," list the owners and tract descriptions which have actually been consolidated. (Use reverse side of this form if necessary.) \_\_\_\_\_

No allowable will be assigned to the well until all interests have been consolidated (by communitization, unitization, forced-pooling, or otherwise) or until a non-standard unit, eliminating such interests, has been approved by the Commission.

## CERTIFICATION

I hereby certify that the information contained herein is true and complete to the best of my knowledge and belief.

Name  
C. Terry Hobbs  
Position  
District Engineer  
Company  
Southland Royalty Company  
Date  
May 22, 1984

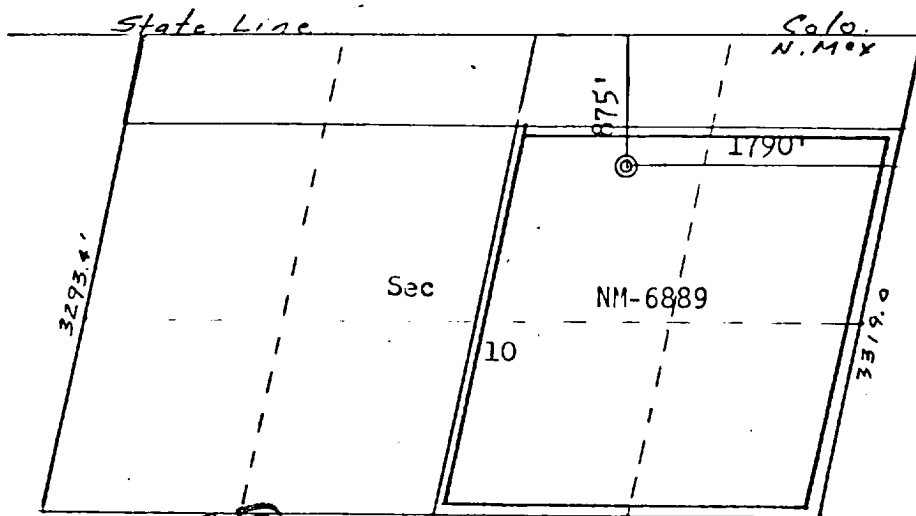
I hereby certify that the well location shown on this plat was plotted from field notes of actual surveys made by me or under my supervision, and that the same is true and correct to the best of my knowledge and belief.

Date Surveyed  
April 13, 1984

Registered Professional Engineer  
and Land Surveyor

Fred E. Kerr Jr.

Certificate No. 3950



RECEIVED  
SEP 13 1984

OIL CON. DIST. 3

RECEIVED

MAY 23 1984

BUREAU OF LAND MANAGEMENT  
FARMINGTON RESOURCE AREA