

UNITED STATES  
DEPARTMENT OF THE INTERIOR  
GEOLOGICAL SURVEY

## APPLICATION FOR PERMIT TO DRILL, DEEPEN, OR PLUG BACK

## 1a. TYPE OF WORK

DRILL ☒DEEPEN ☐PLUG BACK ☐

## b. TYPE OF WELL

OIL  
WELL ☐GAS  
WELL ☒OTHER ☐SINGLE  
ZONE ☒MULTIPLE  
ZONE ☐

## 2. NAME OF OPERATOR

Tenneco Oil Company

## 3. ADDRESS OF OPERATOR

P. O. Box 3249, Englewood, CO 80155

## 4. LOCATION OF WELL (Report location clearly and in accordance with any State requirements.)

At surface

1065' FNL, 900' FWL

At proposed prod. zone

NOV 13 1984

## 14. DISTANCE IN MILES AND DIRECTION FROM NEAREST TOWN OR POST OFFICE

Approximately 7 miles NE of Blanco, New Mexico

## 15. DISTANCE FROM PROPOSED\*

LOCATION TO NEAREST  
PROPERTY OR LEASE LINE, FT.  
(Also to nearest drlg. unit line, if any)

900'

## 16. NO. OF ACRES IN LEASE

1284

17. NO. OF ACRES ASSIGNED  
TO THIS WELL

320 W 315, 47

## 18. DISTANCE FROM PROPOSED LOCATION\*

TO NEAREST WELL, DRILLING, COMPLETED,  
OR APPLIED FOR, ON THIS LEASE, FT.

## 19. PROPOSED DEPTH

± 7550'

## 20. ROTARY OR CABLE TOOLS

Rotary

## 21. ELEVATIONS (Show whether DF, RT, GR, etc.)

6109' GR

## 22. APPROX. DATE WORK WILL START\*

ASAP

23. "GENERAL RECORDING AND CEMENTING PROGRAM  
PROPOSED REQUIREMENTS"This action is subject to administrative  
appeal pursuant to 30 CFR 290.

SIZE OF HOLE	SIZE OF CASING	WEIGHT PER FOOT	SETTING DEPTH	
12-1/4"	9-5/8"	36.0#	± 325'	Circ cmt to surface.
8-3/4"	7"	23.0#	± 3490'	Circ cmt to surface.
6-1/4"	4-1/2"	11.60 & 10.50#	± 7550'	Circ cmt to liner top.

See attached drilling procedure.

Gas is dedicated.

The referenced location was inspected by Jack Spears with the BLM on April 20, 1983. Due to a change in the drilling schedule, the APD was never submitted. We now plan to drill this well in the first quarter of 1985.

IN ABOVE SPACE DESCRIBE PROPOSED PROGRAM: If proposal is to deepen or plug back, give data on present productive zone and proposed new productive zone. If proposal is to drill or deepen directionally, give pertinent data on subsurface locations and measured and true vertical depths. Give blowout preventer program, if any.

## 24.

SIGNED

*Scott McKinnis*

TITLE

Sr. Regulatory Analyst

APPROVED

(This space for Federal or State office use)

PERMIT NO.

APPROVAL DATE

AS AMENDED

NOV 28 1984

APPROVED BY

TITLE

CONDITIONS OF APPROVAL, IF ANY:

627

APPROVED  
AS AMENDED  
NOV 28 1984  
*Robert L. Jones*  
For

NMOCC

## OIL CONSERVATION DIVISION

P. O. BOX 2088

Form C-107  
Revised 10-1-78STATE OF NEW MEXICO  
GEOLOGY AND MINERALS DEPARTMENT

SANTA FE, NEW MEXICO 87501

All distances must be from the outer boundaries of the Section.

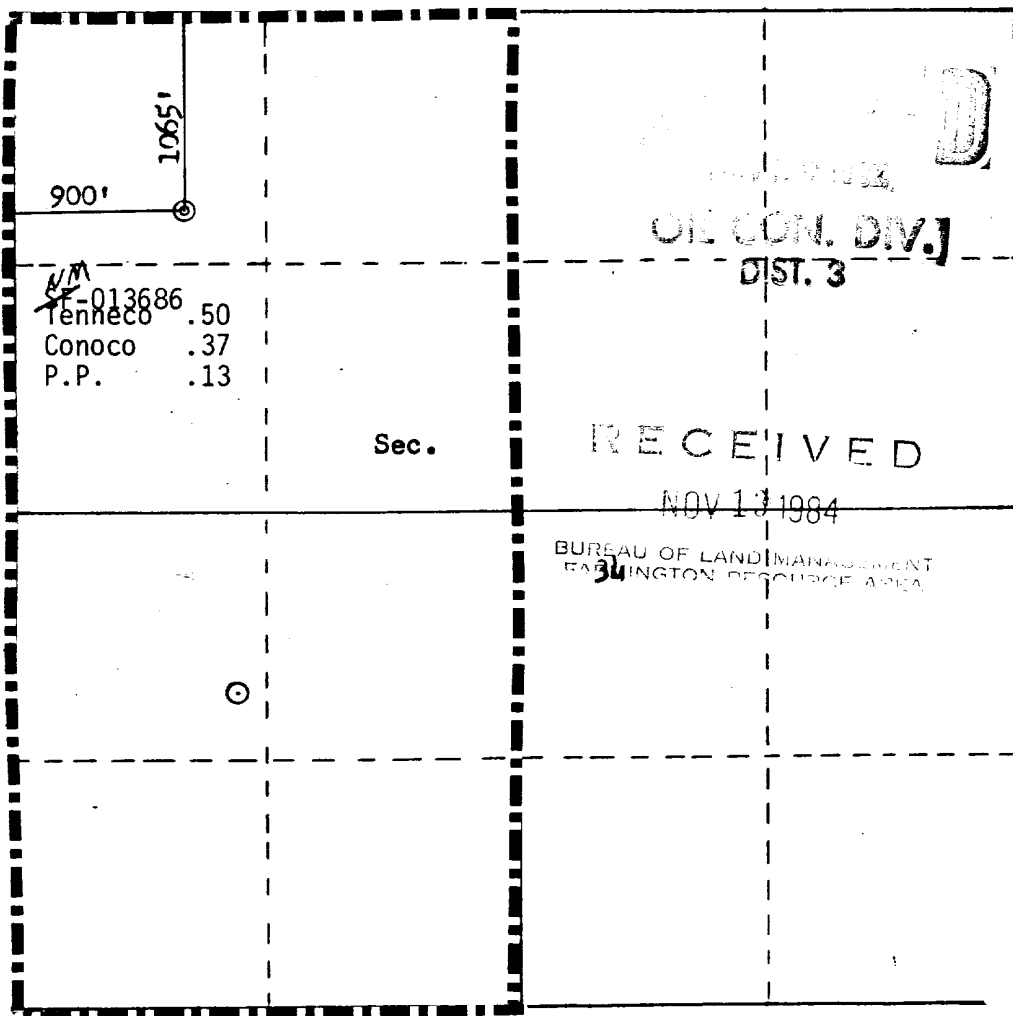
Operator: <b>TENNECO OIL COMPANY</b>			Lease: <b>PRITCHARD</b>		Well No. <b>6E</b>
Unit Letter <b>D</b>	Section <b>34</b>	Township <b>31N</b>	Range <b>9W</b>	County <b>San Juan</b>	
Actual Footage Location of Well: <b>1065</b> feet from the <b>North</b> line and <b>900</b> feet from the <b>West</b> line					
Ground Level Elev. <b>6109</b>	Producing Formation <b>Dakota</b>		Pool <b>Basin Dakota</b>		Dedicated Acreage: <b>315.45 320</b> Acres

1. Outline the acreage dedicated to the subject well by colored pencil or hatchure marks on the plat below.
2. If more than one lease is dedicated to the well, outline each and identify the ownership thereof (both as to working interest and royalty).
3. If more than one lease of different ownership is dedicated to the well, have the interests of all owners been consolidated by communitization, unitization, force-pooling, etc?

☐ Yes ☒ No If answer is "yes," type of consolidation \_\_\_\_\_

If answer is "no," list the owners and tract descriptions which have actually been consolidated. (Use reverse side of this form if necessary.) \_\_\_\_\_

No allowable will be assigned to the well until all interests have been consolidated (by communitization, unitization, forced-pooling, or otherwise) or until a non-standard unit, eliminating such interests, has been approved by the Commission.



## CERTIFICATION

I hereby certify that the information contained herein is true and complete to the best of my knowledge and belief.

Name  
**Scott McKinney**

Position  
**Sr, Regulatory Analyst**

Company  
**Tenneco Oil Co.**

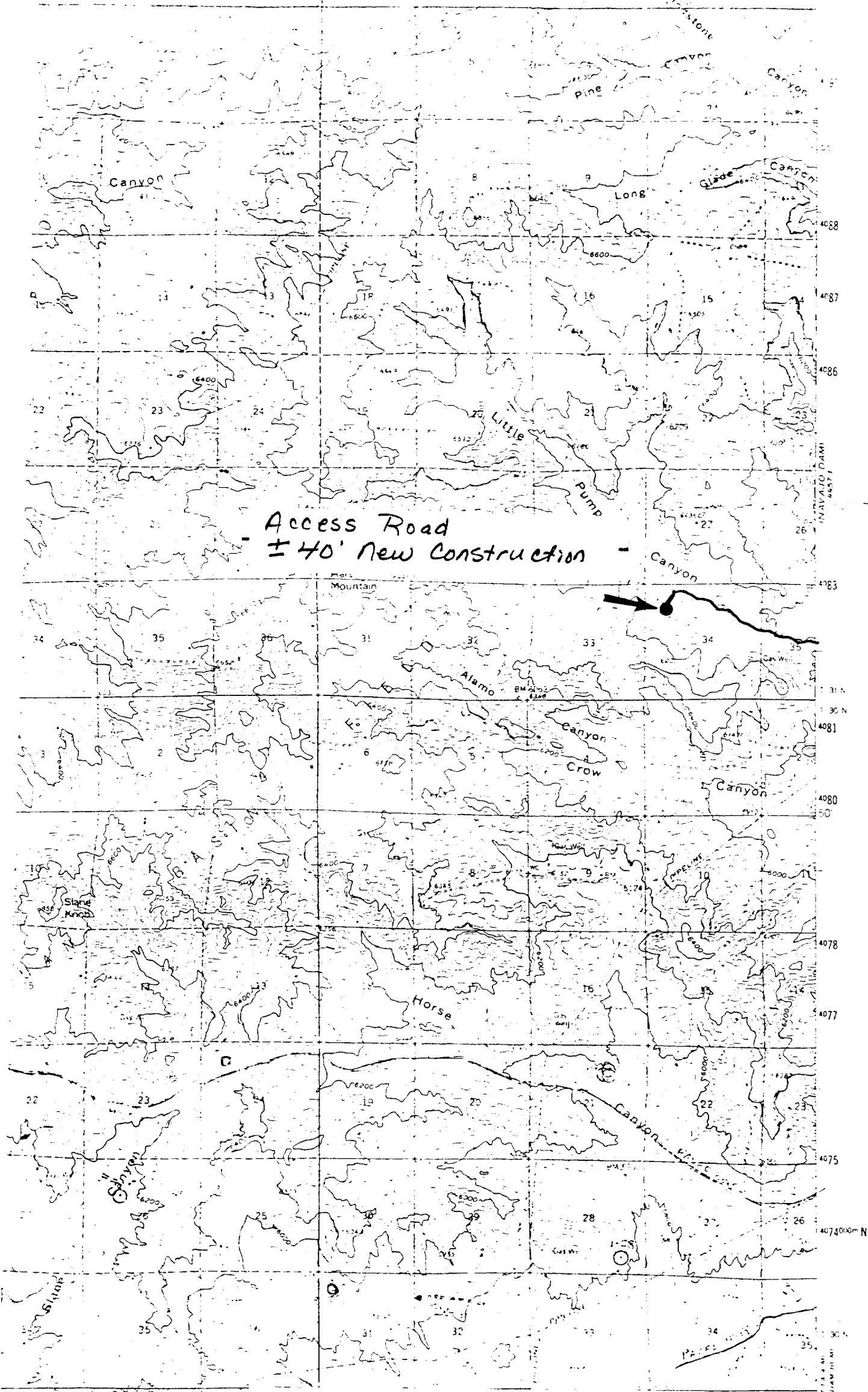
Date  
**November 6, 1984**

I hereby certify that the well location shown on this plat was plotted from field notes of actual surveys made by me or under my supervision, and that the same is true and correct to the best of my knowledge and belief.

Date Surveyed  
**March 8, 1983**

Registered Professional Engineer  
and  
Land Surveyor  
**Fred B. Kery Jr.**

Certificate No. **3950**



Access Road  
± 40' New Construction

Vicinity Map for  
TENNECO OIL COMPANY #6E PRITCHARD  
1065' FNL 900' FWL Sec. 34-T31N-R9W  
SAN JUAN COUNTY, NEW MEXICO

MAP #1