

NEW MEXICO OIL CONSERVATION COMMISSION
WELL LOCATION AND ACREAGE DEDICATION PLAT

Form C-102
Supersedes C-101
Effective 1-1-65

All distances must be from the outer boundaries of the Section.

Operator TENNECO OIL CO.			Lease RIDDLE C			Well No. 6		
Unit Letter K	Section 29	Township 31 N	Range 9 W	County San Juan				
Actual Footage Location of Well: 1535 feet from the South line and 2015 feet from the West line								
Ground Level Elev: 6276	Producing Formation Pictured Cliffs		Pool Blanco EXT			Dedicated Acreage: 157.466 Acres		

1. Outline the acreage dedicated to the subject well by colored pencil or hachure marks on the plat below.
2. If more than one lease is dedicated to the well, outline each and identify the ownership thereof (both as to working interest and royalty).
3. If more than one lease of different ownership is dedicated to the well, have the interests of all owners been consolidated by communitization, unitization, force-pooling, etc?

☐ Yes ☐ No If answer is "yes," type of consolidation _____

If answer is "no," list the owners and tract descriptions which have actually been consolidated. (Use reverse side of this form if necessary.) _____

No allowable will be assigned to the well until all interests have been consolidated (by communitization, unitization, forced-pooling, or otherwise) or until a non-standard unit, eliminating such interests, has been approved by the Commission.

Fd.		RECEIVED APR 28 1987 BUREAU OF LAND MANAGEMENT FARMINGTON RESOURCE AREA	
Fd.		Fd.	
SF-078319-A Tenneco 50% Conoco 50%		RECEIVED MAY 12 1987 OIL CON. DIV. DIST. 3	
2015' 1535'			

Scale: 1"=1000'

CERTIFICATION

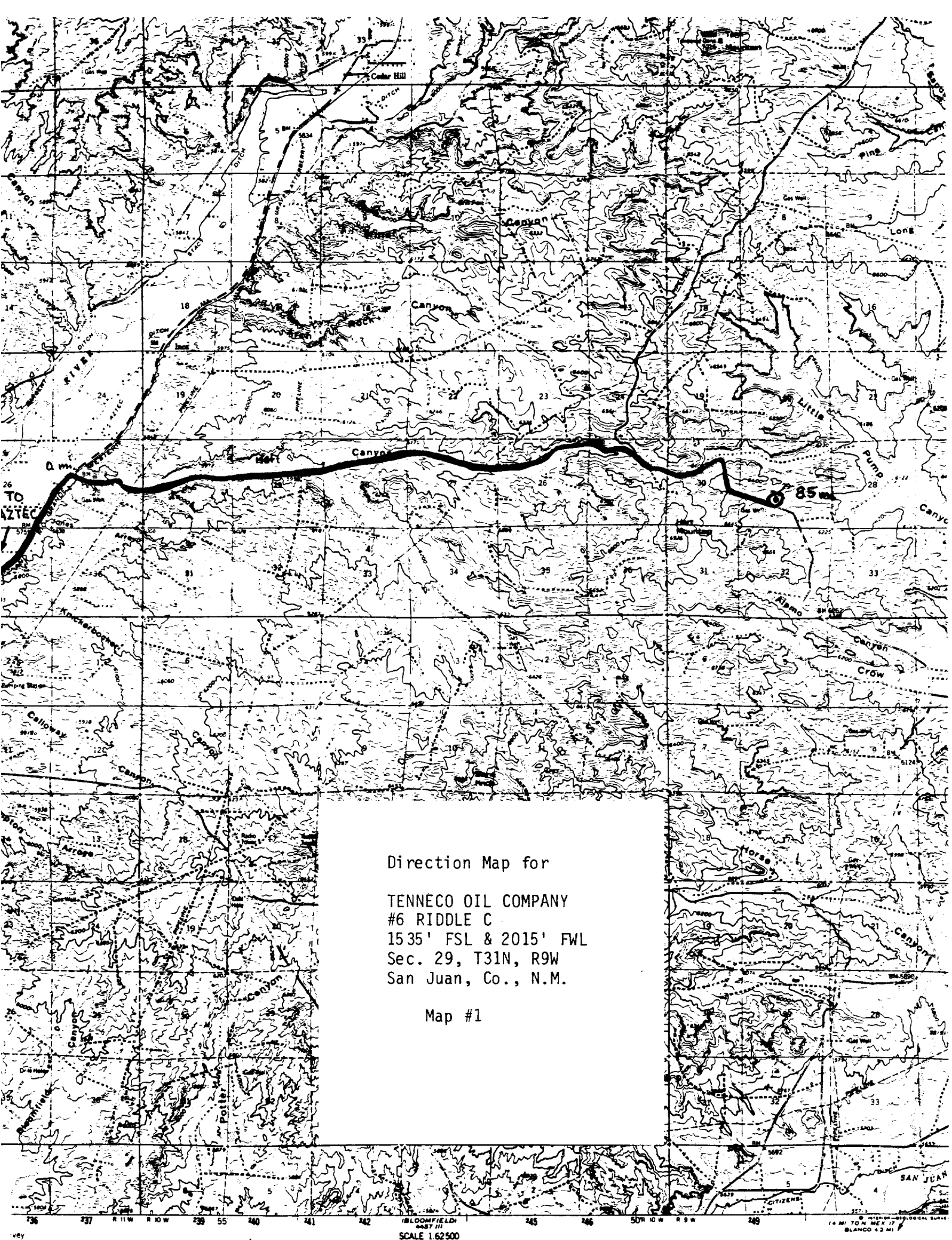
I hereby certify that the information contained herein is true and complete to the best of my knowledge and belief.

Mike M. McCredie

Name
Mike M. McCredie
Position
Administrative Analyst
Company
Tenneco Oil Company
Date
4/24/87

I hereby certify that the well location shown on this plat was plotted from field notes of actual surveys made by me or under my supervision, and that the same is true and correct to the best of my knowledge and belief.

4-3-87
Date Surveyed
William E. Mahoney
Registered Professional Engineer and Land Surveyor
#8466
Professional Land Surveyor



Direction Map for

TENNECO OIL COMPANY
#6 RIDDLE C
1535' FSL & 2015' FWL
Sec. 29, T31N, R9W
San Juan, Co., N.M.

Map #1

SCALE 1:62500