

NO. OF COPIES RECEIVED	
DISTRIBUTION	
SANTA FE	
FILE	
U.S.G.S.	
LAND OFFICE	
OPERATOR	

NEW MEXICO OIL CONSERVATION COMMISSION

Form C-101
Revised 1-4-65

5A. Indicate Type of Lease	
STATE <input checked="" type="checkbox"/>	FEE <input type="checkbox"/>
5. State Oil & Gas Lease No.	
B-10405-61	

APPLICATION FOR PERMIT TO DRILL, DEEPEN, OR PLUG BACK

1a. Type of Work		7. Unit Agreement Name	
b. Type of Well DRILL <input checked="" type="checkbox"/> DEEPEN <input type="checkbox"/> PLUG BACK <input type="checkbox"/>		8. Farm or Lease Name	
OIL WELL <input type="checkbox"/> GAS WELL <input checked="" type="checkbox"/> OTHER <input type="checkbox"/> SINGLE ZONE <input checked="" type="checkbox"/> MULTIPLE ZONE <input type="checkbox"/>		Farmington Com B	
2. Name of Operator		9. Well No.	
Meridian Oil Inc.		1E	
3. Address of Operator		10. Field and Pool, or Wildcat	
PO Box 4289, Farmington, NM 87499		Basin Dakota	
4. Location of Well UNIT LETTER J LOCATED 1550 FEET FROM THE South LINE AND 1450 FEET FROM THE East LINE OF SEC. 36 TWP. 31N RGE. 13W NMPM		12. County	
		San Juan	
19. Proposed Depth		19A. Formation	20. Rotary or C.T.
6950'		Dakota	Rotary
21. Elevations (Show whether DF, RT, etc.)	21A. Kind & Status Plug. Bond	21B. Drilling Contractor	22. Approx. Date Work will start
6000' GL	statewide		

23.

PROPOSED CASING AND CEMENT PROGRAM

SIZE OF HOLE	SIZE OF CASING	WEIGHT PER FOOT	SETTING DEPTH	SACKS OF CEMENT	EST. TOP
12 1/4"	8 5/8"	24.0#	200'	180 cu.ft.	circ. surface
7 7/8"	4 1/2"	10.5# & 11.6#	6950'	2032 cu.ft.	circulated-3 stages

1st stage - 346 cu.ft. to cover Gallup
2nd stage - 540 cu.ft. to cover Mesa Verde
3rd stage - 1146 cu.ft. to cover surface

Selectively perforate and sand water fracture the Dakota formation. A 3000 psi WP and 6000 psi test double gate preventer equipped with blind and pipe rams will be used for blow out prevention on this well. This gas is dedicated.

The E/2 of Section 36 is dedicated to this well.

APPROVAL EXPIRES 3-14-88
UNLESS DRILLING IS COMMENCED.
SPUD NOTICE MUST BE SUBMITTED
WITHIN 10 DAYS.

RECEIVED
SEP 14 1987
OIL CON. DIV.
DIST. 3

IN ABOVE SPACE DESCRIBE PROPOSED PROGRAM: IF PROPOSAL IS TO DEEPEN OR PLUG BACK, GIVE DATA ON PRESENT PRODUCTIVE ZONE AND PROPOSED NEW PRODUCTIVE ZONE. GIVE BLOWOUT PREVENTER PROGRAM, IF ANY.

I hereby certify that the information above is true and complete to the best of my knowledge and belief.

Signed Deputy Clerk Title Drilling Clerk Date 9-11-87

(This space for State Use)

APPROVED BY Ernie Bunch TITLE DEPUTY OIL & GAS INSPECTOR, DIST. 3 DATE SEP 14 1987

CONDITIONS OF APPROVAL, IF ANY:

All distances must be from the outer boundaries of the Section.

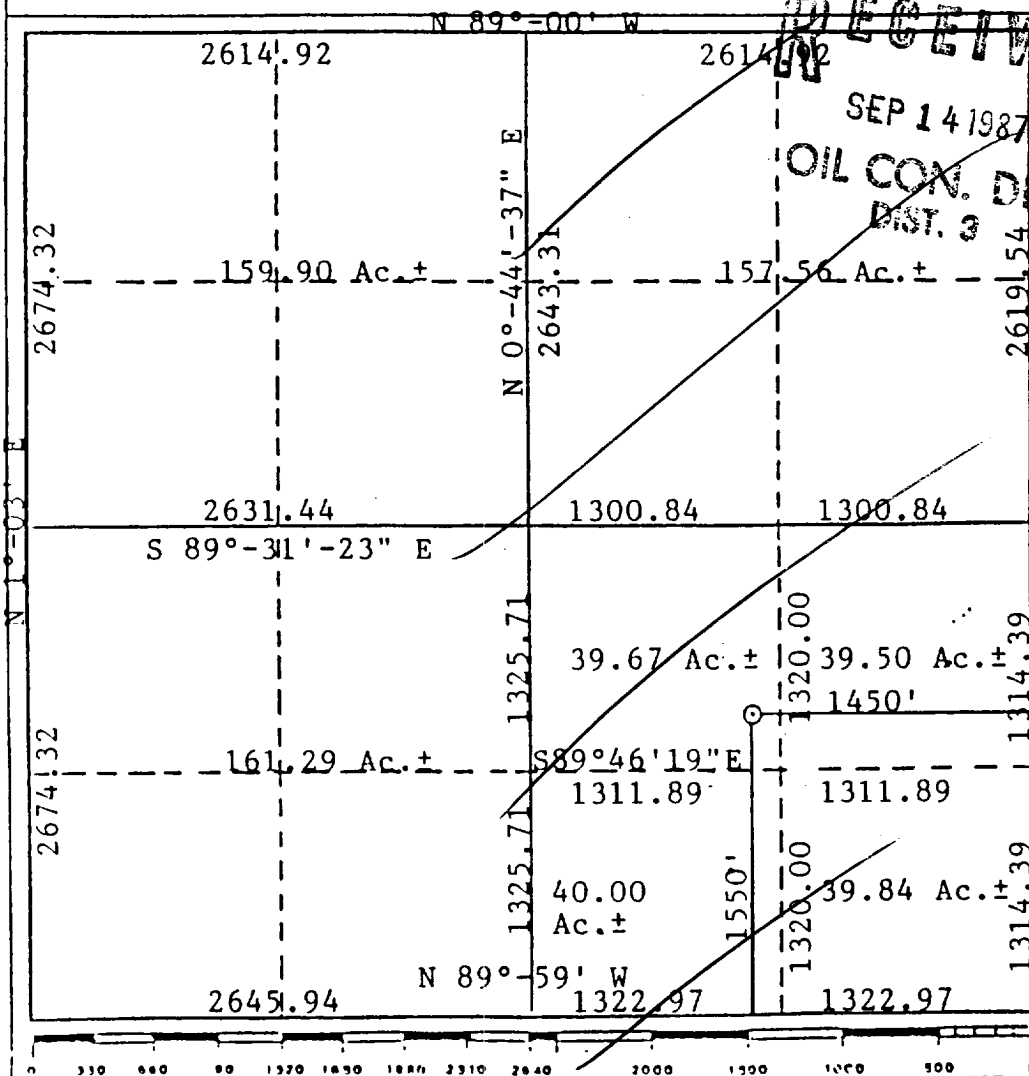
Operator MERIDIAN OIL INC.			Lease FARMINGTON COM "B" (B-10405-61)		Well No. 1-E
Unit Letter J	Section 36	Township 31N	Range R13W	County San Juan	
Actual Postage Location of Well: 1550 feet from the South line and 1450 feet from the East line					
Ground Level Elev. 6000	Producing Formation Dakota		Pool Basin	Dedicated Acreages 320.00 Acres	

1. Outline the acreage dedicated to the subject well by colored pencil or hatchure marks on the plat below.
2. If more than one lease is dedicated to the well, outline each and identify the ownership thereof (both as to working interest and royalty).
3. If more than one lease of different ownership is dedicated to the well, have the interests of all owners been consolidated by communitization, unitization, force-pooling, etc?

☒ Yes ☐ No If answer is "yes," type of consolidation communitization

If answer is "no," list the owners and tract descriptions which have actually been consolidated. (Use reverse side of this form if necessary.)

No allowable will be assigned to the well until all interests have been consolidated (by communitization, unitization, forced-pooling, or otherwise) or until a non-standard unit, eliminating such interests, has been approved by the Division.



RECEIVED
SEP 14 1987
OIL CON. DIV.
DIST. 3

CERTIFICATION

I hereby certify that the information contained herein is true and complete to the best of my knowledge and belief.

Name
Drilling Clerk
Position
Meridian Oil Inc.
Company
9-11-87

Date

I hereby certify that the well location shown on this plat was located from field notes of actual surveys made by me or under my supervision, and that the same is true and correct to the best of my knowledge and belief.

Date Surveyed
August 25, 1987
Registered Land Surveyor

Cecil B. Tullis

Certificate No.
9672