

Title 18 U.S.C. Section 1001, makes it a crime for any person knowingly and willfully to make to any department or agency of the United States any false, fictitious or fraudulent statements or representations as to any matter within its jurisdiction.

NEW MEXICO OIL CONSERVATION COMMISSION
WELL LOCATION AND ACREAGE DEDICATION PLAT

Form C-102
Supersedes C-12h
Effective 1-1-67

All distances must be from the outer boundaries of the Section.

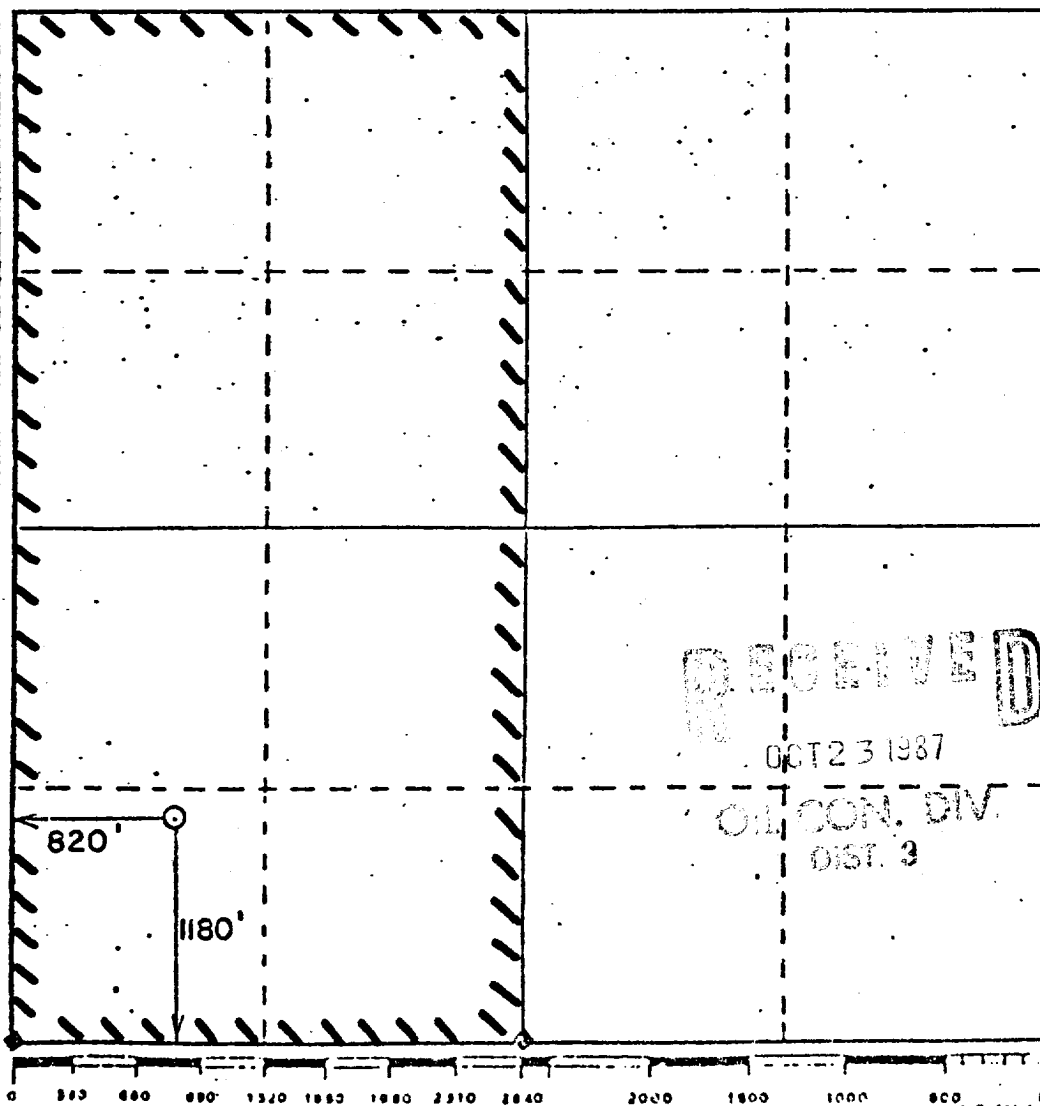
Operator WINTERSHALL CORPORATION		Lease M00-C-1420-4387 <i>Ute Mountain Ute 33</i>		Well No. 33-14	
Unit Letter M	Section 33	Township 31 North	Range 14 West	County San Juan	
Actual Footage Location of Well: 1180 feet from the South line and 820 feet from the West line					
Ground Level Elev. 5498	Producing Formation Dakota	Pool Basin Dakota Gas		Dedicated Acreage 320 Acres	

1. Outline the acreage dedicated to the subject well by colored pencil or hachure marks on the plat below.
2. If more than one lease is dedicated to the well, outline each and identify the ownership thereof (both as to working interest and royalty).
3. If more than one lease of different ownership is dedicated to the well, have the interests of all owners been consolidated by communitization, unitization, force-pooling, etc?

☐ Yes ☐ No If answer is "yes," type of consolidation _____

If answer is "no," list the owners and tract descriptions which have actually been consolidated. (Use reverse side of this form if necessary.) _____

No allowable will be assigned to the well until all interests have been consolidated (by communitization, unitization, forced-pooling, or otherwise) or until a non-standard unit, eliminating such interests, has been approved by the Commission.



CERTIFICATION

I hereby certify that the information contained herein is true and complete to the best of my knowledge and belief.

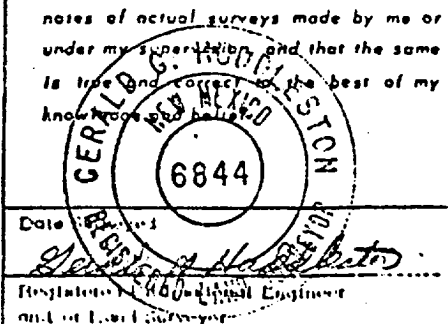
Name **Brian Wood**

Position **Consultant**

Company **Wintershall Corporation**

Date **August 25, 1987**

I hereby certify that the well location shown on this plat was plotted from field notes of actual surveys made by me or under my supervision and that the same is true and correct to the best of my knowledge and belief.

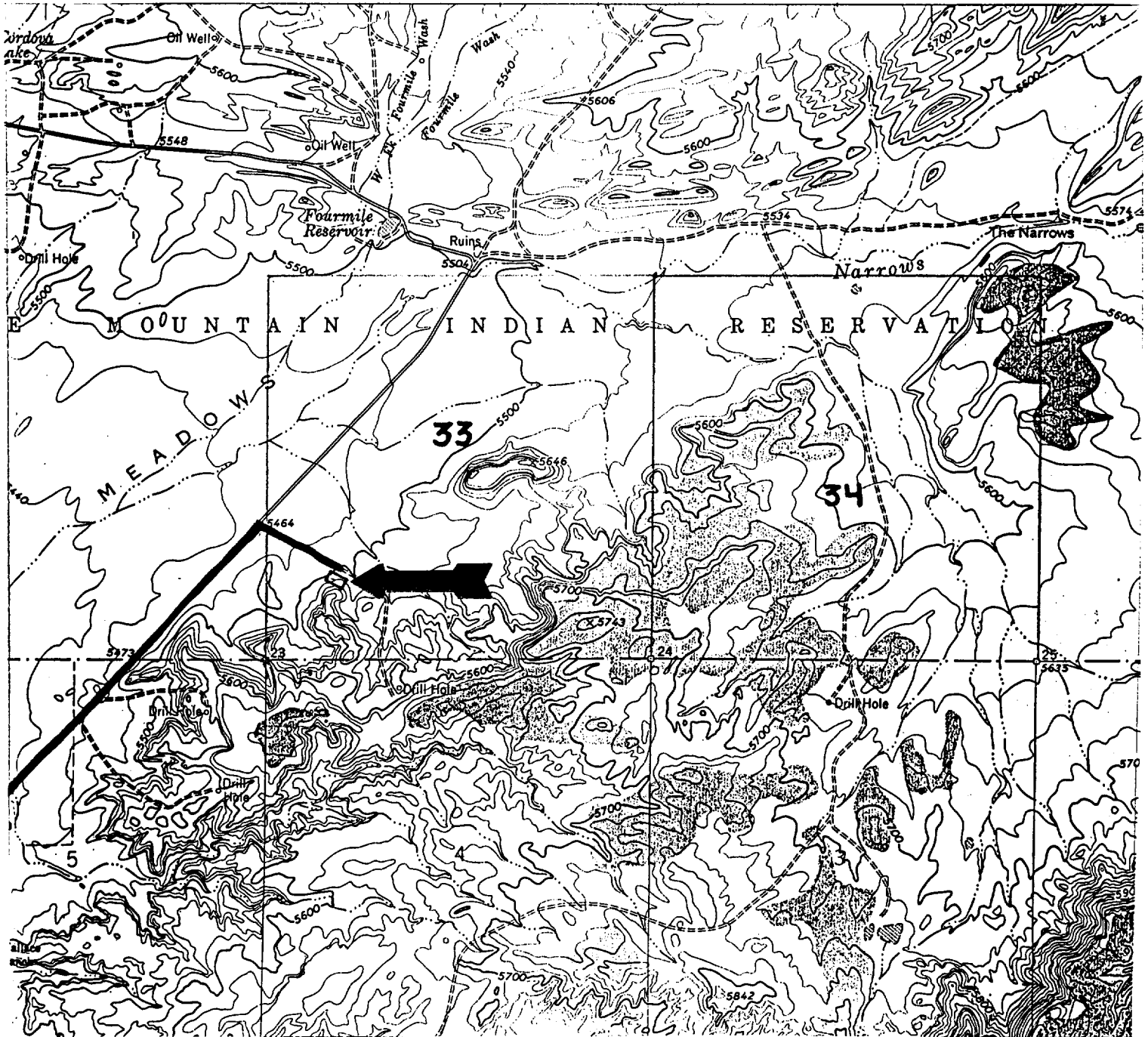



Date **August 25, 1987**
Signature **[Signature]**
Registration No. **6844**
and of Land Surveyor

Certificate No. **6844**

Wintershall Corporation
Ute Mtn. Ute 33-14
1180' FSL & 820' FWL
Sec. 33, T. 31 N., R. 14 W.
San Juan County, New Mexico

PAGE 14



Ute Mtn. Ute 33-14 Well: 

Existing Access: 