

NO. OF COPIES RECEIVED	
DISTRIBUTION	
SANTA FE	
FILE	
U.S.G.S.	
LAND OFFICE	
OPERATOR	

NEW MEXICO OIL CONSERVATION COMMISSION

Form C-101
Revised 1-1-65

5A. Indicate Type of Lease
STATE <input checked="" type="checkbox"/> FEE <input type="checkbox"/>
5. State Oil & Gas Lease No.
E-286-22

APPLICATION FOR PERMIT TO DRILL, DEEPEN, OR PLUG BACK

1a. Type of Work		7. Unit Agreement Name	
b. Type of Well OIL WELL <input type="checkbox"/> GAS WELL <input checked="" type="checkbox"/> OTHER <input type="checkbox"/>		8. Farm or Lease Name EPNG Com C	
2. Name of Operator Meridian Oil Inc.		9. Well No. 100	
3. Address of Operator PO Box 4289, Farmington, NM 87499		10. Field and Pool, or Withcat CEDAR HILL, FRUITLAND EXT	
4. Location of Well UNIT LETTER K LOCATED 1850 FEET FROM THE South LINE AND 1487 FEET FROM THE West LINE OF SEC. 16 TWP. 32N RGE. 10W NMPM		12. County San Juan	
19. Proposed Depth 3555		19A. Formation Fruitland	
20. Rotary or C.T. Rotary		21. Elevations (Show whether DF, RT, etc.) 6767' GL	
21A. Kind & Status Plug. Bond statewide		21B. Drilling Contractor	
22. Approx. Date Work will start			

PROPOSED CASING AND CEMENT PROGRAM

SIZE OF HOLE	SIZE OF CASING	WEIGHT PER FOOT	SETTING DEPTH	SACKS OF CEMENT	EST. TOP
12 1/4"	9 5/8"	32.3#	200'	130 cu.ft.	circ.surface
8 3/4"	7"	20.0#	3270'	1030 cu.ft.	circ.surface
6 1/4"	5 1/2"	23.0#	3555'	do not cement	

The Fruitland formation will be completed.

A 3000 psi WP and 6000 psi test double gate preventer equipped with blind and pipe rams will be used for blow out prevention on this well.

This gas is dedicated.

The SW/4 of Section 16 is dedicated to this well.

APPROVED BY 11-10-88
UNLESS DRILLING IS COMMENCED,
SPUD NOTICE MUST BE SUBMITTED
WITHIN 10 DAYS.

IN ABOVE SPACE DESCRIBE PROPOSED PROGRAM: IF PROPOSAL IS TO DEEPEN OR PLUG BACK, GIVE DATA ON PRESENT PRODUCTIVE ZONE AND PROPOSED NEW PRODUCTIVE ZONE. GIVE BLOWOUT PREVENTER PROGRAM, IF ANY.

I hereby certify that the information above is true and complete to the best of my knowledge and belief.

Signed Peggy Doak Title Drilling Clerk Date 4-25-88

(This space for State Use)

APPROVED BY [Signature] TITLE DEPUTY OIL & GAS INSPECTOR, DIST. #3

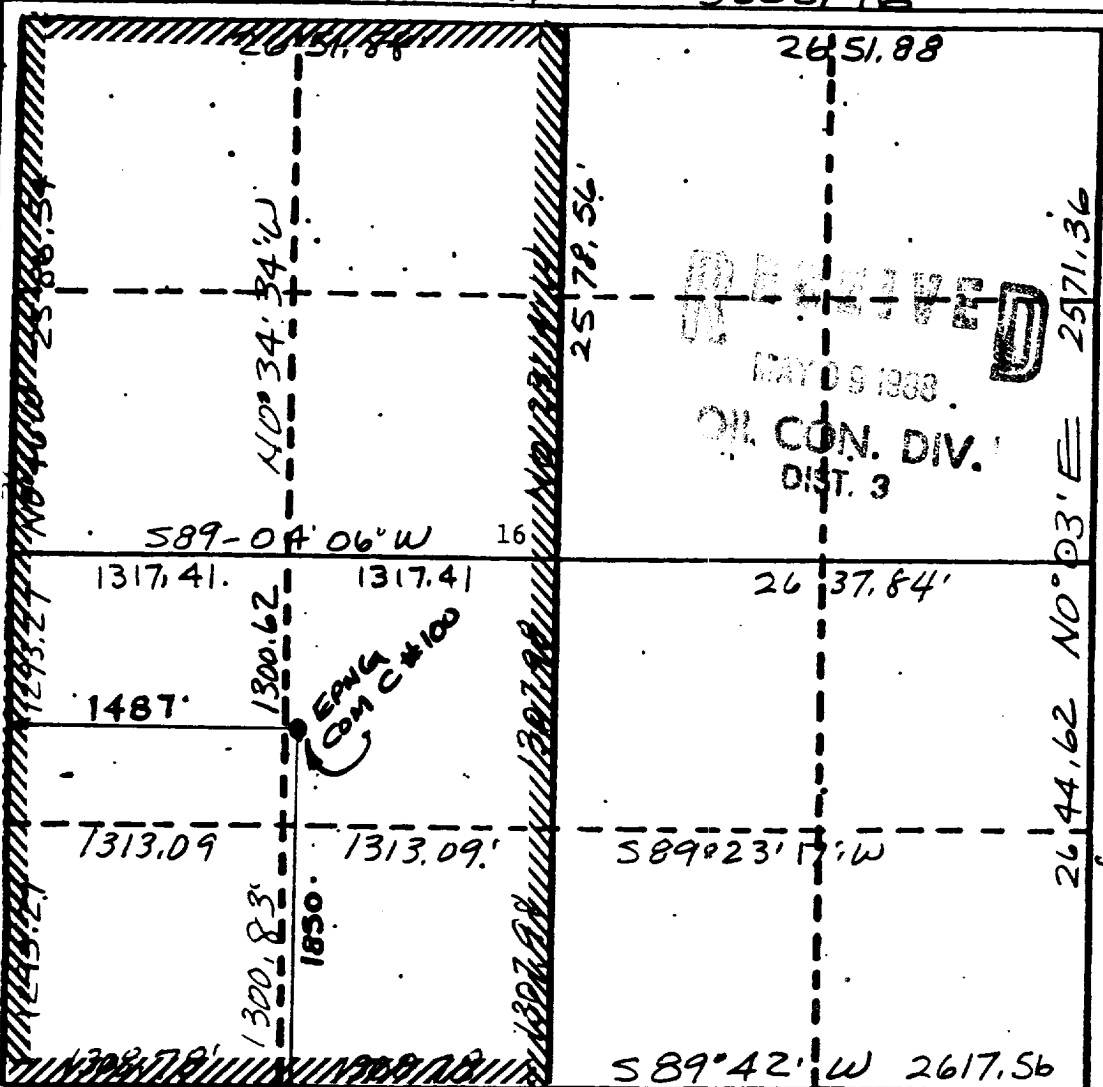
CONDITIONS OF APPROVAL, IF ANY:

DATE MAY 10 1988

Form C-102
Supersedes C-1
Effective 3-1-61

Operator MERIDIAN OIL INC.		Lease EPNG COM C (E-286-22)		Well No. 100
Unit Letter K	Section 16	Township 32 NORTH	Range 10 WEST	County SAN JUAN
Actual Footage Location of Well				
1850 feet from the SOUTH line and		1487 feet from the WEST line		
Ground Level Elev. 6767	Producing Formation Fruitland EXT.	Pool Cedar Hill Fruitland Basal EXT.	Dedicated Acres 320	

- 5890 14' W . 5303, 76 .



Certificate No.
.6857