

UNITED STATES
DEPARTMENT OF THE INTERIOR
BUREAU OF LAND MANAGEMENT

APPLICATION FOR PERMIT TO DRILL, DEEPEN, OR PLUG BACK

1a. TYPE OF WORK

DRILL ☒

DEEPEN ☐

PLUG BACK ☐

b. TYPE OF WELL

OIL
WELL ☐

GAS
WELL ☒

SINGLE
ZONE ☒

MULTIPLE
ZONE ☐

2. NAME OF OPERATOR

Meridian Oil Inc.

3. ADDRESS OF OPERATOR

PO Box 4289, Farmington, NM 87499

4. LOCATION OF WELL (Report location clearly and in accordance with any State requirements.)

At surface 150' N, 1175' E

At proposed prod. zone

14. DISTANCE IN MILES AND DIRECTION FROM NEAREST TOWN OR POST OFFICE*

5 miles from Cedar Hill

10. DISTANCE FROM PROPOSED*

LOCATION TO NEAREST
PROPERTY OR LEASE LINE, FT.
(Also to nearest drig. unit line, if any)

1155'

16. NO. OF ACRES IN LEASE

160 636

17. NO. OF ACRES ASSIGNED

TO THIS WELL 160 00

18. DISTANCE FROM PROPOSED LOCATION*

TO NEAREST WELL, DRILLING, COMPLETED, 600
OR APPLIED FOR, ON THIS LEASE, FT.

19. PROPOSED DEPTH

3070'

20. ROTARY OR CABLE TOOLS

Rotary

21. ELEVATIONS (Show whether DP, RT, GR, etc.)

6329' GL

DRILLING PROPOSED AUTHORIZED ARE
SUBJECT TO STATE AND FEDERAL LAWS

22. APPROX. DATE WORK WILL START*

23. GENERAL REQUIREMENTS FOR CASING AND CEMENTING PROGRAM

SIZE OF HOLE	SIZE OF CASING	WEIGHT PER FOOT	SETTING DEPTH	QUANTITY OF CEMENT
12 1/4"	9 5/8"	32.3#	200'	125 cf. circulated
8 3/4"	7"	20.0#	2810'	499 cf to cover Ojo Alamo
6 1/4"	5 1/2" inner	23.0#	3070'	do not cement

The Fruitland formation will be completed.

A 3000 psi WP and 6000 psi test double gate preventer equipped with blind and pipe rams will be used for blow out prevention on this well.

This gas is dedicated.

The NE/4 of Section 18 is dedicated to this well

IN ABOVE SPACE DESCRIBE PROPOSED PROGRAM: If proposal is to deepen or plug back, give data on present productive zone and proposed new productive zone. If proposal is to drill or deepen directionally, give pertinent data on subsurface locations and measured and true vertical depths. Give blowout preventer program, if any.

24.

SIGNED

[Signature]

TITLE

Drilling Clerk

DATE

03-08-88

(This space for Federal or State office use)

APPROVED
AS AMENDED

PERMIT NO.

"Approval of this action does not

APPROVAL DATE

APR 26 1988

APPROVED BY

TITLE

DATE

CONDITIONS OF APPROVAL, IF ANY:

hold legal or equitable right
or title to this land."

*See Instructions On Reverse Side

AREA MANAGER

/Orig. Sgt. Linda S. C. Rundell

Acting Area Manager

Title 18 U.S.C. Section 1001, makes it a crime for any person knowingly and willfully to make to any department or agency of the United States any false, fictitious or fraudulent statements or representations as to any matter within its jurisdiction.

OIL CONSERVATION DIVISION

P. O. BOX 2088

STATE OF NEW MEXICO
ENERGY AND MINERALS DEPARTMENT

SANTA FE, NEW MEXICO 87501

Form C-102
Revised 10-1-78

All distances must be from the outer boundaries of the Section.

Operator MERIDIAN OIL, INC.		Lease VANDERSLICE (SF-078215A)		Well No. 100
Unit Letter A	Section 18	Township 32-N	Range 10-W	County SAN JUAN

Actual Footage Location of Well:

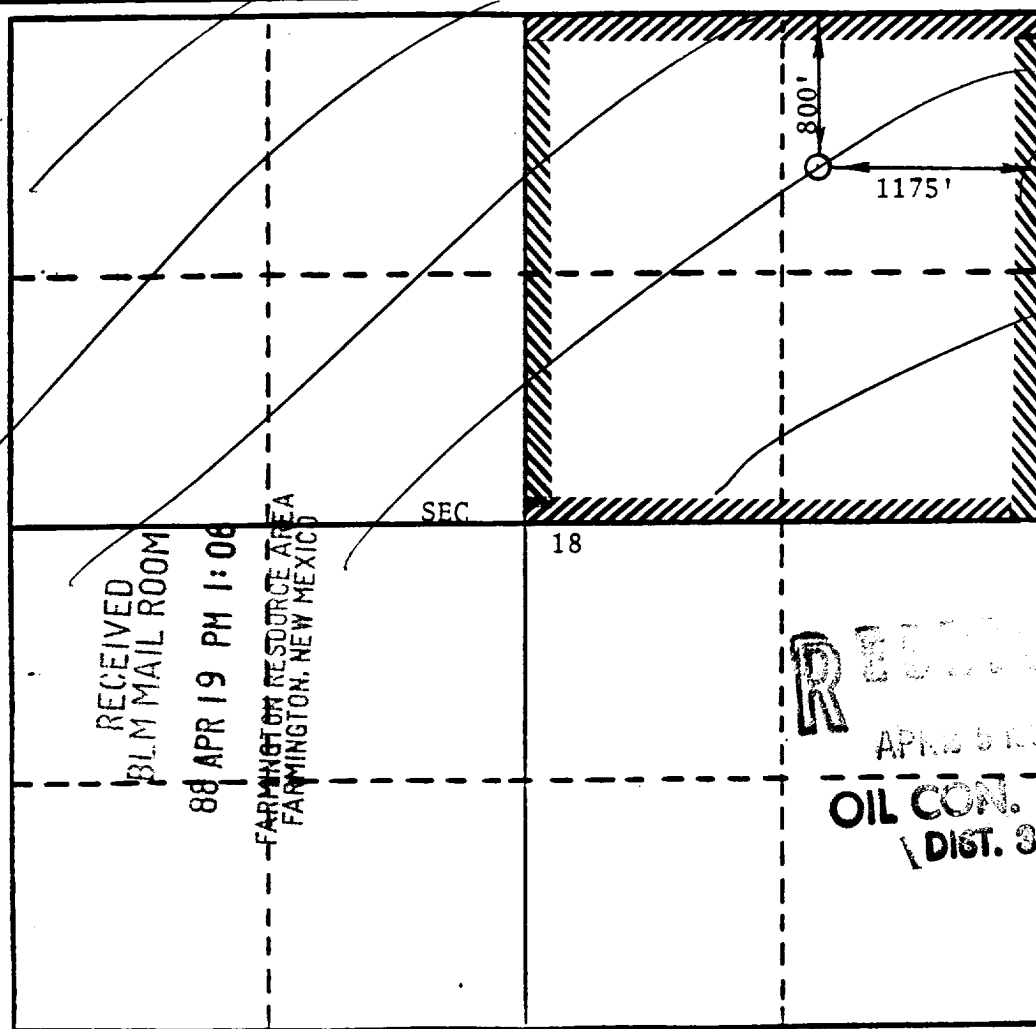
800	feet from the	NORTH	line and	1175	feet from the	EAST	line
Ground Level Elev. 6330	Producing Formation Fruitland		Pool Cedar Hill Fruitland Basal		Dedicated Acreage 318.29		Acres

1. Outline the acreage dedicated to the subject well by colored pencil or hatchure marks on the plat below.
2. If more than one lease is dedicated to the well, outline each and identify the ownership thereof (both as to working interest and royalty).
3. If more than one lease of different ownership is dedicated to the well, have the interests of all owners been consolidated by communitization, unitization, force-pooling, etc?

☐ Yes ☐ No If answer is "yes," type of consolidation _____

If answer is "no," list the owners and tract descriptions which have actually been consolidated. (Use reverse side of this form if necessary.) _____

No allowable will be assigned to the well until all interests have been consolidated (by communitization, unitization, forced-pooling, or otherwise) or until a non-standard unit, eliminating such interests, has been approved by the Division.



CERTIFICATION

I hereby certify that the information contained herein is true and complete to the best of my knowledge and belief.

Name
Drilling Clerk

Position
Meridian Oil Inc.

Company
4-6-88

Date

I hereby certify that the well location shown on this plat was plotted from field notes of actual surveys made by me or under my supervision, and that the same is true and correct to the best of my knowledge and belief.

MARCH 16, 1988

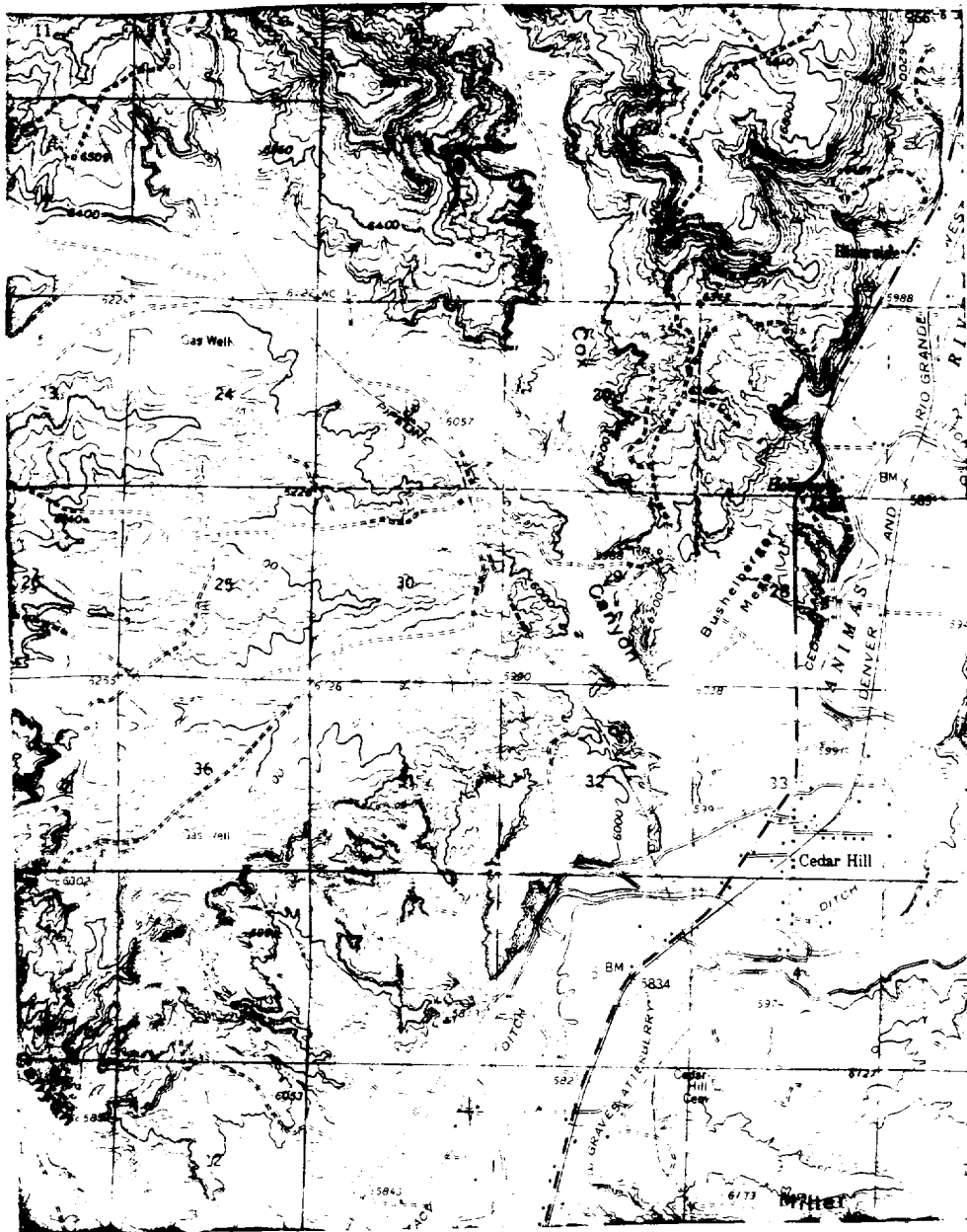
Date Surveyed

ISAAC L. WEAVER

Registered Professional Engineer
and/or Land Surveyor

Certificate No.
8966

Vanderslice 100
NE 18-32-10



Map #2

LEGEND OF RIGHT-OF-WAYS

- EXISTING ROADS —————
- EXISTING PIPELINES + + +
- EXISTING ROAD & PIPELINE + + + +
- PROPOSED ROADS ————
- PROPOSED PIPELINES - - - -
- PROPOSED ROAD & PIPELINE - - - - + + + +