

UNITED STATES
DEPARTMENT OF THE INTERIOR

BUREAU OF LAND MANAGEMENT

APPLICATION FOR PERMIT TO DRILL, DEEPEN, OR PLUG BACK

1a. TYPE OF WORK DRILL <input checked="" type="checkbox"/> DEEPEN <input type="checkbox"/> PLUG BACK <input type="checkbox"/>				5. LEASE DESIGNATION AND SERIAL NO. SF 076554	
b. TYPE OF WELL OIL WELL <input type="checkbox"/> GAS WELL <input checked="" type="checkbox"/> OTHER <input type="checkbox"/>				6. IF INDIAN, ALLOTTEE OR TRIBE NAME	
2. NAME OF OPERATOR MESA OPERATING LIMITED PARTNERSHIP				7. UNIT AGREEMENT NAME	
3. ADDRESS OF OPERATOR P.O. BOX 2009, AMARILLO, TEXAS 79189				8. FARM OR LEASE NAME HAMILTON	
4. LOCATION OF WELL (Report location clearly and in accordance with any State requirements.) At surface 1184' FSL/1112' FWL At proposed prod. zone Same				9. WELL NO. #3	
14. DISTANCE IN MILES AND DIRECTION FROM NEAREST TOWN OR POST OFFICE* 3 miles NW from Cedar Hill, New Mexico				10. FIELD AND POOL, OR WILDCAT Undesignated Cedar Hill-Fruitland Basal	
13. DISTANCE FROM PROPOSED* LOCATION TO NEAREST PROPERTY OR LEASE LINE, FT. (Also to nearest drlg. unit line, if any) 1112'		16. NO. OF ACRES IN LEASE 640		11. SEC., T., R., M., OR BLK. Coal Gas AND SURVEY OR AREA M Sec. 30-32N-10W	
18. DISTANCE FROM PROPOSED LOCATION* TO NEAREST WELL, DRILLING, COMPLETED, OR APPLIED FOR, ON THIS LEASE, FT. 200'		19. PROPOSED DEPTH 3100'		12. COUNTY OR PARISH San Juan	
21. ELEVATIONS (Show whether DF, RT, GR, etc.) 6099' DRILLING OPERATIONS AUTHORIZED ARE		17. NO. OF ACRES ASSIGNED TO THIS WELL 320/323-89		13. STATE NM	
23. PROPOSED CASING AND CEMENTING PROGRAM				22. APPROX. DATE WORK WILL START* 4-25-88	
This action is subject to technical and procedural review pursuant to 40 CFR 161.104 and approval of the BLM.					
SIZE OF HOLE	SIZE OF CASING	WEIGHT PER FOOT	SETTING DEPTH	QUANTITY OF CEMENT	
12 1/4"	8 5/8"	24#	200'	150 sx "B" + 2% CaCl(surface)	
7 7/8"	5 1/2"	17#	3100'	400 Poz/300 "B" (surface)	

Propose to spud well with 12 1/4" hole and drill to 200' and set 8 5/8" surface casing. Will cement with 150 sx of Class "B" and raise cement to surface. Will nipple up 3000 psi BOP assembly and drill 7 7/8" hole to TD of $\pm 3100'$ with fresh water mud system. Will then log well and evaluate for possible commercial production. If successful, will then run 5 1/2" casing to $\pm 3100'$ and cement with 400 sx Pozmix followed by 300 sx Class "B" cement. Will move off drilling rig and move in completion unit.

RECEIVED

APR 12 1988

OIL CON. DIV.

xc: BLM-Farmington (0+5), NMOCD-Aztec (1), WF, Reg. Land, Expl., Partners
IN ABOVE SPACE DESCRIBE PROPOSED PROGRAM: If proposal is to deepen or plug back, give data on present productive zone. If proposal is to drill or deepen directionally, give pertinent data on subsurface locations and measured and true vertical depths. Give blowout preventer program, if any.

24. SIGNED R.L. Mathis TITLE Regulatory Agent DATE 3/21/88

(This space for Federal or State office use)

PERMIT NO. _____ APPROVAL DATE _____

APPROVED BY _____ TITLE _____ DATE APR 12 1988

CONDITIONS OF APPROVAL, IF ANY:

APPROVED
AS AMENDED

APR 12 1988
AREA MANAGER

HOLD C-104 TO VERIFY THAT ONLY BASAL COAL IS OPERATED
5/6 OK

*See Instructions On Reverse Side

NEW MEXICO OIL CONSERVATION COMMISSION
WELL LOCATION AND ACREAGE DEDICATION PLAT

Form C-102
Supersedes C-128
Effective 1-1-65

All distances must be from the outer boundaries of the Section.

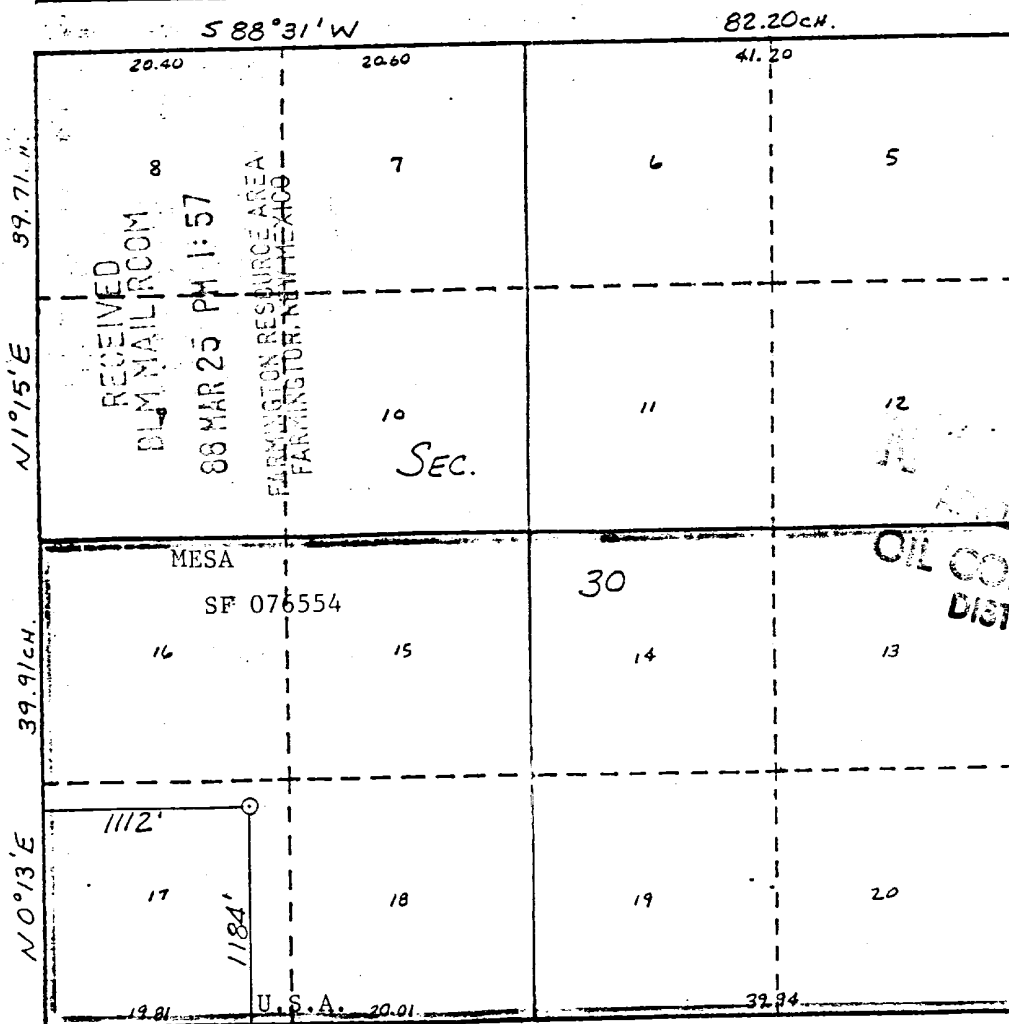
Operator MESA OPERATING LIMITED PARTNERSHIP			Lease HAMILTON		Well No. 3
Unit Letter M	Section 30	Township 32 N	Range 10 W	County San Juan	
Actual Footage Location of Wells: 1184 feet from the South line and 1112 feet from the West line					
Ground Level Elev: 6099	Producing Formation Fruitland Coal		Pool Cedar Hill-Fruitland Basal Coa		Dedicated Acreage: 223.87 S/2 320 Acres

1. Outline the acreage dedicated to the subject well by colored pencil or hatchure marks on the plat below.
2. If more than one lease is dedicated to the well, outline each and identify the ownership thereof (both as to working interest and royalty).
3. If more than one lease of different ownership is dedicated to the well, have the interests of all owners been consolidated by communitization, unitization, force-pooling, etc?

☐ Yes ☒ No If answer is "yes," type of consolidation _____

If answer is "no," list the owners and tract descriptions which have actually been consolidated. (Use reverse side of this form if necessary.) _____

No allowable will be assigned to the well until all interests have been consolidated (by communitization, unitization, forced-pooling, or otherwise) or until a non-standard unit, eliminating such interests, has been approved by the Commission.



CERTIFICATION

I hereby certify that the information contained herein is true and complete to the best of my knowledge and belief.

R. E. Mathis

Name
R. E. Mathis
Position
Regulatory Agent
Company
Mesa Operating Ltd Partnership
Date
3/21/88

I hereby certify that the well location shown on this plat was plotted from field notes of actual surveys made by me or under my supervision, and that the same is true and correct to the best of my knowledge and belief.

Date Surveyed
12-2-87
William E. Mahne, II
Registered Professional Engineer
and Land Surveyor
#8466
Certificate No. 8466
PROFESSIONAL LAND SURVEYOR

Via Dril. 1.15 Reg. J. Harlan, Excl. Land, Const. Partners

