

# WELL LOCATION AND ACREAGE DEDICATION PLAT

Form C-102  
Supersedes C-32  
Effective 1-1-88

Distances must be from the outer boundaries of the section.

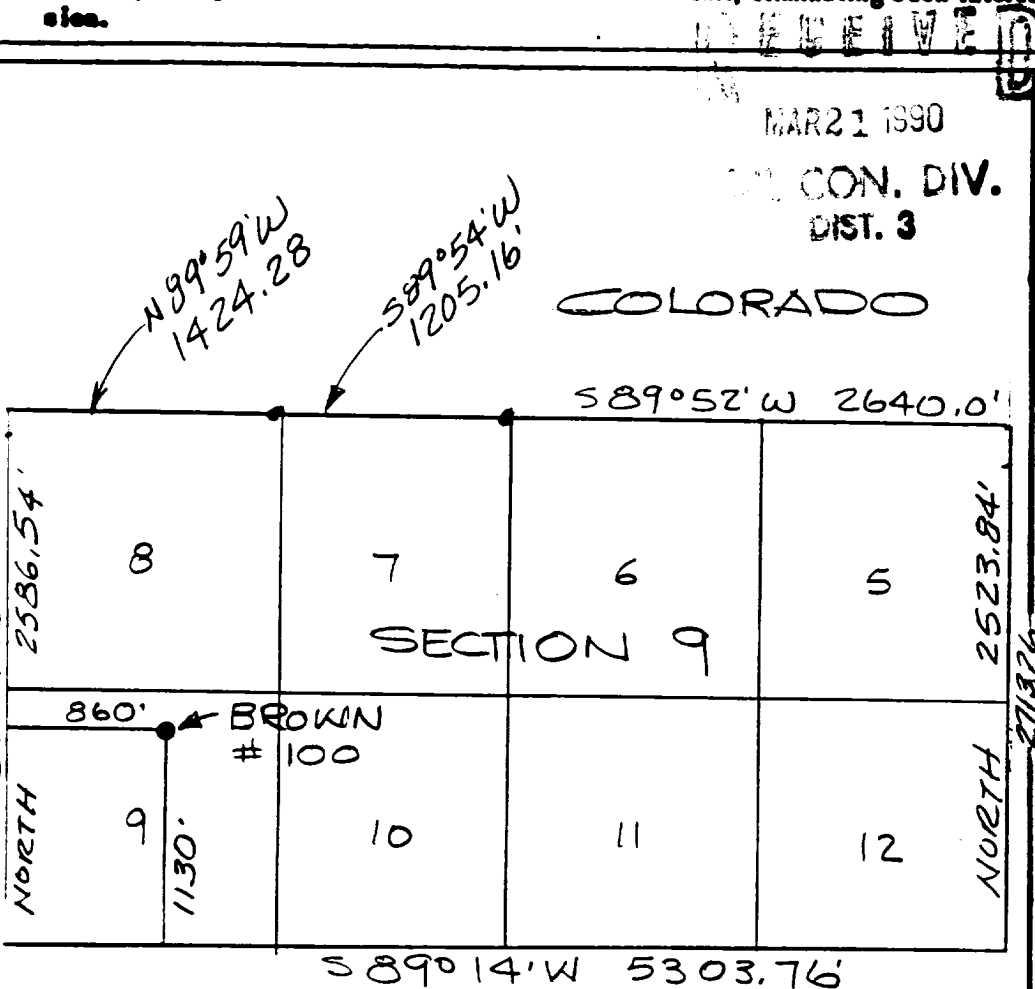
Operator <b>MERIDIAN OIL INC.</b>			Lease <b>BROWN (NM-013367)</b>		Well No. <b>100</b>
Unit Letter <b>G</b>	Section <b>9</b>	Township <b>32 NORTH</b>	Range <b>10 WEST</b>	County <b>SAN JUAN</b>	
Actual Footage Location of Well: 1130 feet from the SOUTH line and 860 feet from the WEST line					
Ground Level Elev. <b>6781</b>	Producing Formation <b>Fruitland Coal</b>		Pool <b>Basin</b>		Dedicated Acreage <b>334.06</b> Acres

1. Outline the acreage dedicated to the subject well by colored pencil or hatchure marks on the plat below.
2. If more than one lease is dedicated to the well, outline each and identify the ownership thereof (both as to working interest and royalty).
3. If more than one lease of different ownership is dedicated to the well, have the interests of all owners been consolidated by communitization, unitization, force-pooling, etc?

☒ Yes ☐ No If answer is "yes," type of consolidation communitization agreement #NM-80052

If answer is "no," list the owners and tract descriptions which have actually been consolidated. (Use reverse side of this form if necessary.)

No allowable will be assigned to the well until all interests have been consolidated (by communitization, unitization, forced-pooling, or otherwise) or until a non-standard unit, eliminating such interests, has been approved by the Commission.



## CERTIFICATION

I hereby certify that the information contained herein is true and complete to the best of my knowledge and belief.

*Neale C. Edwards*

Name

Drilling Clerk

Position

Meridian Oil Inc.

Company

3-19-90

Date

NEALE C. EDWARDS  
NEW MEXICO  
REGISTERED LAND SURVEYOR  
I hereby certify that the well location shown on this plat is based on field notes of official surveys made by me or under my supervision, and that the same is true and correct to the best of my knowledge and belief.

*Neale C. Edwards*

Date Surveyed

APRIL 7, 1988

Registered Professional Engineer and/or Land Surveyor

NEALE C. EDWARDS