

UNITED STATES
DEPARTMENT OF THE INTERIOR
BUREAU OF LAND MANAGEMENT

20-042-26442

APPLICATION FOR PERMIT TO DRILL, DEEPEN, OR PLUG BACK

1a. TYPE OF WORK
 DRILL DEEPEN PLUG BACK

b. TYPE OF WELL
 OIL WELL GAS WELL OTHER SINGLE ZONE MULTIPLE ZONE

2. NAME OF OPERATOR
 Meridian Oil Inc.

3. ADDRESS OF OPERATOR
 PO Box 4289, Farmington, NM 87499

4. LOCATION OF WELL (Report location clearly and in accordance with any State requirements.)
 At surface 1505'S, 795'W
 At proposed prod. zone

14. DISTANCE IN MILES AND DIRECTION FROM NEAREST TOWN OR POST OFFICE*
 7 miles from Aztec, NM

15. DISTANCE FROM PROPOSED* LOCATION TO NEAREST PROPERTY OR LEASE LINE, FT. (Also to nearest drpg. unit line, if any) 795'

16. NO. OF ACRES IN LEASE 2066.44

17. NO. OF ACRES ASSIGNED TO THIS WELL 160.00 159.80

18. DISTANCE FROM PROPOSED LOCATION* TO NEAREST WELL, DRILLING COMPLETED, OR APPLIED FOR, ON THIS LEASE, FT. 250'

19. PROPOSED DEPTH 3010'

20. ROTARY OR CABLE TOOLS Rotary

21. ELEVATIONS (Show whether DF, RT, GR, etc.) 6260' GL
 DRILLING OPERATIONS AUTHORIZED ARE SUBJECT TO COMPLIANCE WITH ATTACHED "GENERAL REQUIREMENTS"

22. APPROX. DATE WORK WILL START* This action is subject to technical and procedural review pursuant to 43 CFR 3160.8 and approval pursuant to 43 CFR 3162.4.

23. PROPOSED CASING AND CEMENTING PROGRAM

| SIZE OF HOLE | SIZE OF CASING | WEIGHT PER FOOT | SETTING DEPTH | QUANTITY OF CEMENT |
|--------------|----------------|-----------------|---------------|----------------------|
| 12 1/4" | 9 5/8" | 32.3# | 200' | 130 cf, circulated |
| 8 3/4" | 7" | 20.0# | 2833' | 890 cf circ. surface |
| 6 1/4" | 5 1/2" liner | 23.0# | 3010' | do not cement |

The Fruitland coal formation will be completed.
 A 3000 psi WP and 6000 psi test double gate preventer equipped with blind and pipe rams will be used for blow out prevention on this well.
 This gas is dedicated.
 The SW/4 of Section 22 is dedicated to this well.

RECEIVED
 AUG 22 1988
 OIL CON. DIV.
 BLM

IN ABOVE SPACE DESCRIBE PROPOSED PROGRAM: If proposal is to deepen or plug back, give data on present productive zone and proposed new productive zone. If proposal is to drill or deepen directionally, give pertinent data on subsurface locations and measured and true vertical depths. Give blowout preventer program, if any.

24. SIGNER [Signature] TITLE Regulatory Affairs DATE 07-22-88

(This space for Federal or State office use)

PERMIT NO. _____ APPROVAL DATE _____

APPROVED BY _____ TITLE _____

CONDITIONS OF APPROVAL, IF ANY:

dx
30

RECEIVED
 AUG 01 1988
 OIL CON. DIV.
 BLM
 [Signature]

*See Instructions On Reverse Side

All distances must be from the outer boundaries of the Section.

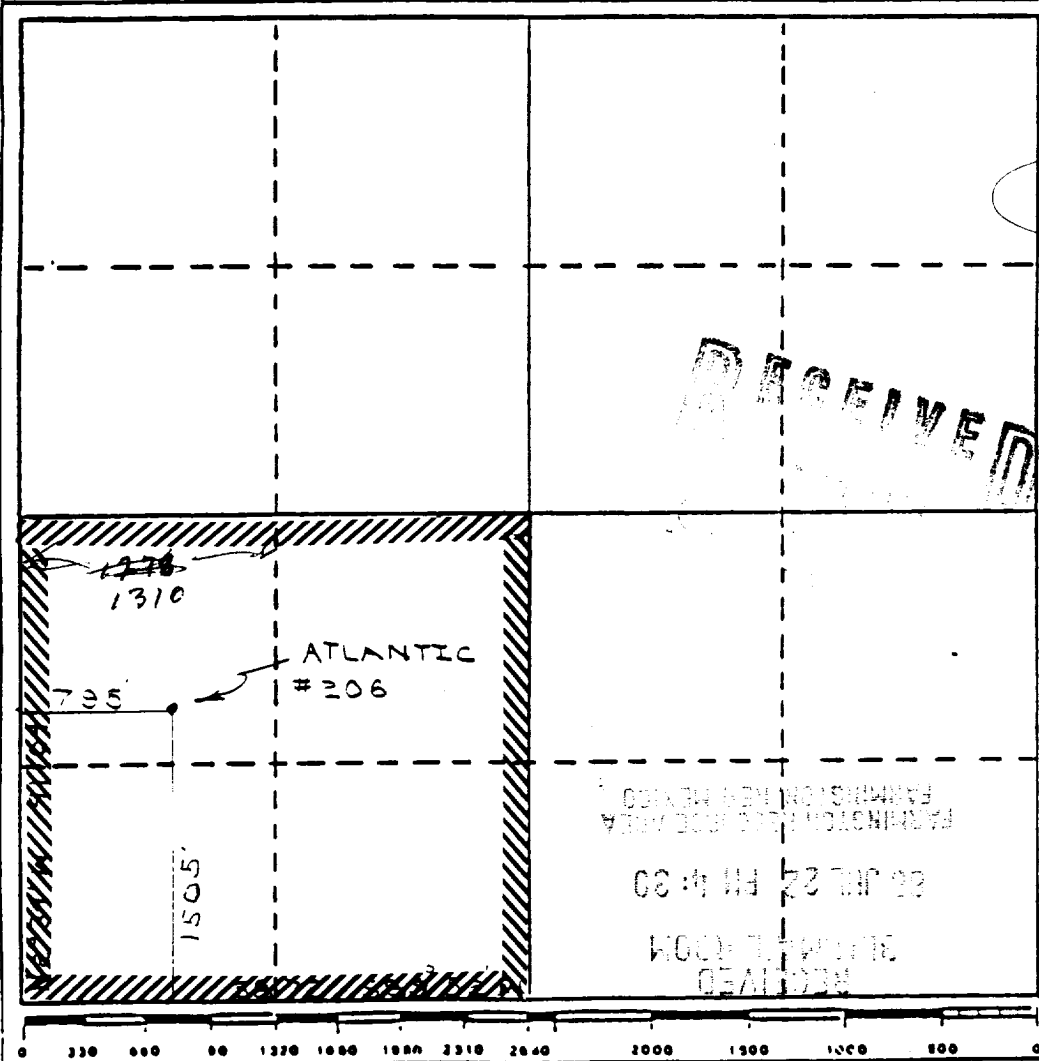
| | | | | |
|---|---------------------------------------|-----------------------------|---------------------------------------|---------------------------|
| Operator Meridian Oil Co. | | Lease Atlantic NM-013688 | | Well No. 206 |
| Unit Letter L | Section 22 | Township T31N | Range R10W | County San Juan County |
| Actual Footage Location of Wells 1505 feet from the South line and 795 feet from the West line | | | | |
| Ground Level Elev. 6260 | Producing Formation Fruitland Coal | Pool Undesignated | Dedicated Acreage 160 157.89 Acres | |

1. Outline the acreage dedicated to the subject well by colored pencil or hachure marks on the plat below.
2. If more than one lease is dedicated to the well, outline each and identify the ownership thereof (both as to working interest and royalty).
3. If more than one lease of different ownership is dedicated to the well, have the interests of all owners been consolidated by communitization, unitization, force-pooling, etc?

Yes No If answer is "yes," type of consolidation _____

If answer is "no," list the owners and tract descriptions which have actually been consolidated. (Use reverse side of this form if necessary.) _____

No allowable will be assigned to the well until all interests have been consolidated (by communitization, unitization, forced-pooling, or otherwise) or until a non-standard unit, eliminating such interests, has been approved by the Division.



CERTIFICATION

I hereby certify that the information contained herein is true and complete to the best of my knowledge and belief.

R. Howard Daggett
Name

Drilling Clerk

Position

Meridian Oil Inc.

Company

7-22-88

Date

I hereby certify that the location shown on this plat was plotted from field notes and actual surveys made by me or under my supervision, and that the same is true and correct to the best of my knowledge and belief.

Registered Professional

Date Surveyed

June 9, 1988

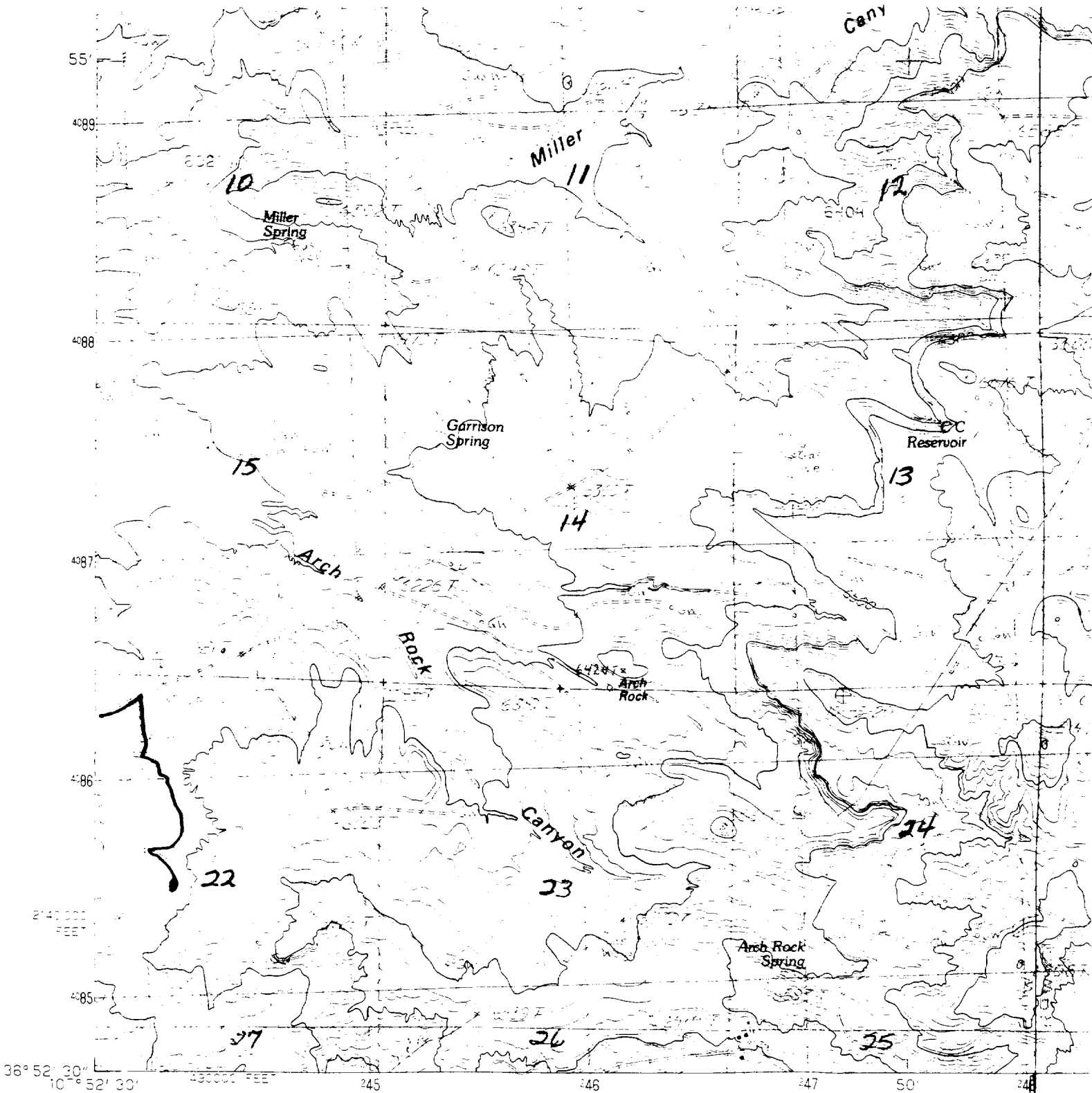
Registered Land Surveyor

R. Howard Daggett

R. Howard Daggett
Certificate No.

9679





PRODUCED BY THE UNITED STATES GEOLOGICAL SURVEY
 CONTROL BY USGS, NOS/NOAA
 COMPILED FROM AERIAL PHOTOGRAPHS TAKEN 1981
 FIELD CHECKED 1981 MAP EDITED 1985
 PROJECTION: TRANSVERSE MERCATOR
 GRID: 1000-METER UNIVERSAL TRANSVERSE MERCATOR ZONE 13
 10,000-FOOT STATE GRID TICKS NEW MEXICO, WEST ZONE
 COLORADO, SOUTH ZONE

UTM GRID DECLINATION 1'41" WEST
 1985 MAGNETIC NORTH DECLINATION 12' EAST
 VERTICAL DATUM NATIONAL GEODETIC VERTICAL DATUM OF 1929
 HORIZONTAL DATUM 1927 NORTH AMERICAN DATUM
 To place on the predicted North American Datum of 1983,
 move the projection lines as shown by dashed corner ticks
 (2 meters north and 55 meters east)

There may be private inholdings within the boundaries of any
 Federal and State Reservations shown on this map
 All marginal data and lettering generated and positioned by
 automated type placement procedures

R-10-W

PROVISIONAL MAP
 Produced from original
 manuscript drawings. Informa-
 tion shown as of date of
 field check.