

UNITED STATES
DEPARTMENT OF THE INTERIOR
BUREAU OF LAND MANAGEMENT

APPLICATION FOR PERMIT TO DRILL, DEEPEN, OR PLUG BACK

1a. TYPE OF WORK

DRILL ☒

DEEPEN ☐

PLUG BACK ☐

b. TYPE OF WELL

OIL
WELL ☐

GAS
WELL ☒

OTHER

2. NAME OF OPERATOR

Southland Royalty Company

3. ADDRESS OF OPERATOR

PO Box 4289, Farmington, NM 87499

4. LOCATION OF WELL (Report location clearly and in accordance with any State requirements.)*

At surface
1120'S, 1450'W

At proposed prod. zone

14. DISTANCE IN MILES AND DIRECTION FROM NEAREST TOWN OR POST OFFICE*

6 miles from Cedar Hill, NM

15. DISTANCE FROM PROPOSED*

LOCATION TO NEAREST
PROPERTY OR LEASE LINE, FT. 1120'
(Also to nearest drig. unit line, if any)

16. NO. OF ACRES IN LEASE

320

17. NO. OF ACRES ASSIGNED
TO THIS WELL

160.00 320

18. DISTANCE FROM PROPOSED LOCATION*
TO NEAREST WELL, DRILLING, COMPLETED, 400'
OR APPLIED FOR, ON THIS LEASE, FT.

19. PROPOSED DEPTH
3110'

20. ROTARY OR CABLE TOOLS
Rotary

21. ELEVATIONS (Show whether DF, RT, GR, etc.)
6344' GL

DRILLING AND TESTING OPERATIONS ARE
SUBJECT TO COMPLIANCE WITH ATTACHED

22. APPROX. DATE WORK WILL START*

23. PROPOSED CASING AND CEMENTING PROGRAM

This action is subject to technical and
procedural review pursuant to 43 CFR 3166.3
and appeal pursuant to 43 CFR 3166.4.

SIZE OF HOLE	SIZE OF CASING	WEIGHT PER FOOT	SETTING DEPTH	QUANTITY OF CEMENT
12 1/4"	9 5/8"	32.3#	200'	130 cf. circulated
8 3/4"	7"	20.0#	2855'	900 cf circ. surface
6 1/4"	5 1/2" line	23.0#	3110'	do not cement

The Fruitland coal formation will be completed.

A 3000 psi WP and 6000 psi test double gate preventer equipped with
blind and pipe rams will be used for blow out prevention on this well.

This gas is dedicated.

The SW/4 of Section 24 is dedicated to this well.

RECEIVED
JUL 27 1988

OIL CON. DIV.

IN ABOVE SPACE DESCRIBE PROPOSED PROGRAM: If proposal is to deepen or plug back, give data on present productive zone and proposed new productive zone. If proposal is to drill or deepen directionally, give pertinent data on subsurface locations and measured and true vertical depths. Give blowout preventer program, if any.

24. SIGNED Peggy Dosh TITLE Regulatory Affairs DATE 07-11-88

(This space for Federal or State office use)

PERMIT NO. _____ APPROVAL DATE _____

APPROVED BY _____ TITLE _____ DATE _____

CONDITIONS OF APPROVAL, IF ANY:

NMOCC

*See Instructions On Reverse Side

APPROVED
AS AMENDED
JUL 28 1988
AREA MANAGER

WELL LOCATION AND ACREAGE DEDICATION PLAT

Form C-103
Supersedes C-120
Effective 1-4-65

All distances must be from the outer boundaries of the Section.

Operator MERIDIAN OIL INC.			Lease PRIMO MUDGE (SF-078039A)		Well No. 100
Unit Letter N	Section 24	Township 32 NORTH	Range 11 WEST	County SAN JUAN	
Actual Postage Location of Wells 1120 feet from the SOUTH line and 1450 feet from the WEST line					
Ground Level Elev. 6344	Producing Formation Fruitland Basal Coa		Pool Cedar Hill EXT		Dedicated Acreage 320 Acres

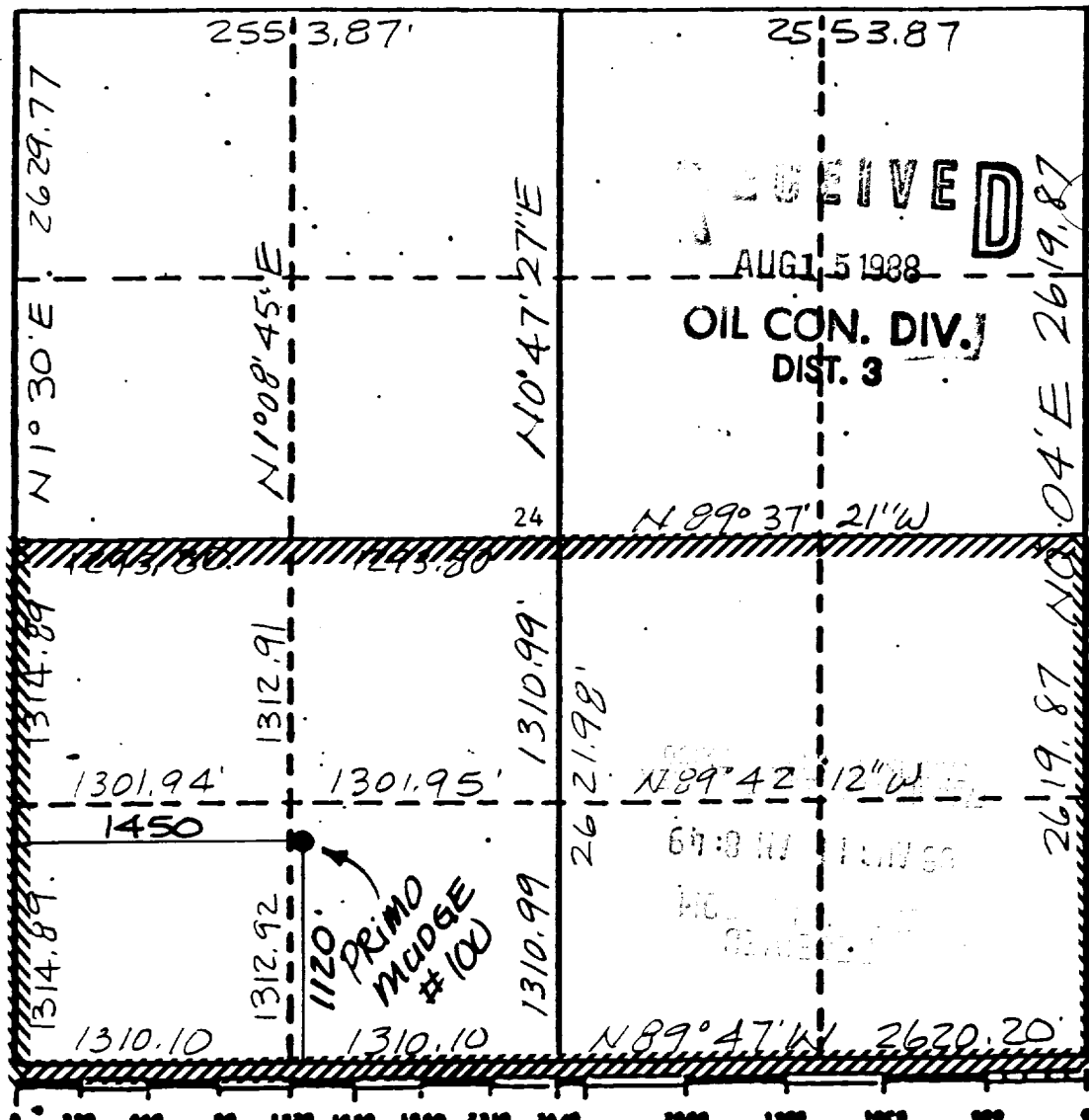
1. Outline the acreage dedicated to the subject well by colored pencil or hachure marks on the plat below.
2. If more than one lease is dedicated to the well, outline each and identify the ownership thereof (both as to working interest and royalty).
3. If more than one lease of different ownership is dedicated to the well, have the interests of all owners been consolidated by communitization, unitization, force-pooling, etc?

☐ Yes ☐ No If answer is "yes," type of consolidation _____

If answer is "no," list the owners and tract descriptions which have actually been consolidated. (Use reverse side of this form if necessary.) _____

No allowable will be assigned to the well until all interests have been consolidated (by communitization, unitization, forced-pooling, or otherwise) or until a non-standard unit, eliminating such interests, has been approved by the Commission.

N 89° 31' W 5107.74' NOTE: reissued to show corrected



pool and dedication.
8-10-88 CERTIFICATION

I hereby certify that the information contained herein is true and complete to the best of my knowledge and belief.

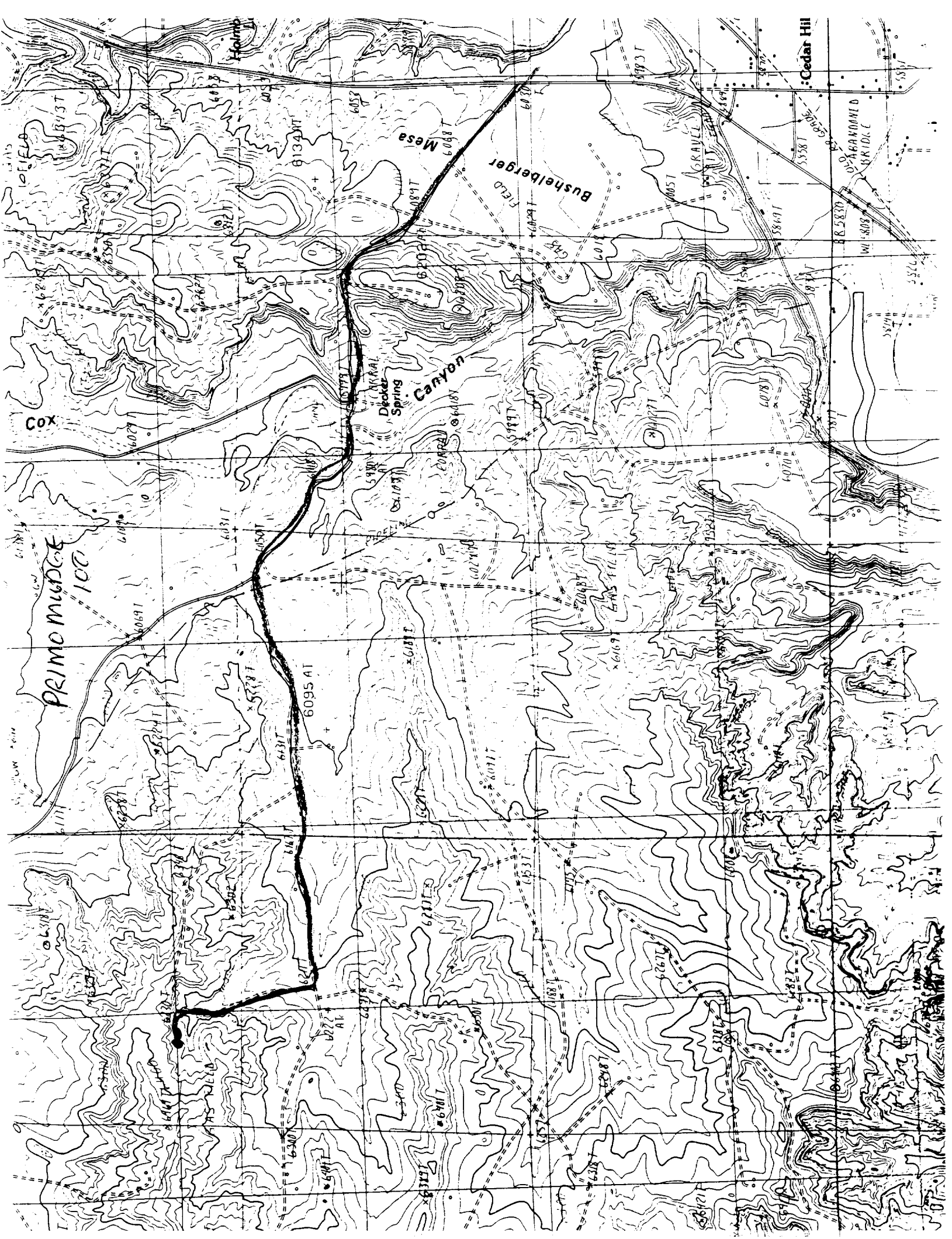
Name
Drilling Clerk
Position
Meridian Oil Inc.
Company
Date

I hereby certify that the well location shown on this plat was plotted from field notes of actual surveys made by me or under my supervision, and that the same is true and correct to the best of my knowledge.

Date Surveyed
APRIL 9, 1988
Registered Professional Engineer
and/or Land Surveyor

NEALE C. EDWARDS

Certificate No.
6857



PRIMO MUDCE
100

Mesa

Canyon

Bushelberger

Cedar Hill

ABANDONED
BRIDGE