

UNITED STATES
DEPARTMENT OF THE INTERIOR
BUREAU OF LAND MANAGEMENT

RECEIVED
BLM MAIL ROOM

APPLICATION FOR PERMIT TO DRILL, DEEPEN, OR PLUG BACK

1a. TYPE OF WORK

DRILL ☒

DEEPEN ☐

PLUG BACK ☐

b. TYPE OF WELL

OIL
WELL ☐

GAS
WELL ☒

OTHER ☐

FARMINGTON RESERVOIR AREA
FARMINGTON, NEW MEXICO
SINGLE ZONE ☒ MULTIPLE ZONE ☐

2. NAME OF OPERATOR

Meridian Oil Inc.

3. ADDRESS OF OPERATOR

PO Box 4289, Farmington, NM 87499

4. LOCATION OF WELL (Report location clearly and in accordance with any State requirements.)
At surface

1485'S, 1460'W

At proposed prod. zone

14. DISTANCE IN MILES AND DIRECTION FROM NEAREST TOWN OR POST OFFICE*

9 miles to Aztec, NM

15. DISTANCE FROM PROPOSED*

LOCATION TO NEAREST
PROPERTY OR LEASE LINE, FT.
(Also to nearest drlg. unit line, if any)

1460'

18. DISTANCE FROM PROPOSED LOCATION*

TO NEAREST WELL, DRILLING, COMPLETED,
OR APPLIED FOR, ON THIS LEASE, FT.

300'

16. NO. OF ACRES IN LEASE

861.59

19. PROPOSED DEPTH

2885'

17. NO. OF ACRES ASSIGNED
TO THIS WELL

160.00/158.48

20. ROTARY OR CABLE TOOLS

Rotary

21. ELEVATIONS (Show whether DF, RT, GR, etc.)

6207' GL

DRILLING OPERATIONS AUTHORIZED ARE
SUBJECT TO COMPLIANCE WITH ATTACHED
"GENERAL REQUIREMENTS"
PROPOSED CASING AND CEMENTING PROGRAM

22. APPROX. DATE WORK WILL START*

This action is subject to technical and
procedural review pursuant to 43 CFR 3160.3
and appeal pursuant to 43 CFR 3165.4.

SIZE OF HOLE	SIZE OF CASING	WEIGHT PER FOOT	SETTING DEPTH	
12 1/4"	9 5/8"	32.3#	200'	130 cf. circulated
8 3/4"	7"	20.0#	2766'	890 cf circ. surface
6 1/4"	5 1/2" liner	23.0#	2885'	do not cement

The Fruitland coal formation will be completed.

A 3000 psi WP and 6000 psi test double gate preventer equipped with
blind and pipe rams will be used for blow out prevention on this well.

This gas is dedicated.

The SW/4 of Section 15 is dedicated to this well.

RECEIVED
SEP 18 1988

OIL CON. DIV
DIST. 3

IN ABOVE SPACE DESCRIBE PROPOSED PROGRAM: If proposal is to deepen or plug back, give data on present productive zone and proposed new productive zone. If proposal is to drill or deepen directionally, give pertinent data on subsurface locations and measured and true vertical depths. Give blowout preventer program, if any.

24.

SIGNED

[Signature]

TITLE

Regulatory Affairs DATE 08-18-88

(This space for Federal or State office use)

"Approval of this action does

PERMIT NO.

not warrant that the applicant

APPROVAL DATE

APPROVED BY: *[Signature]* TITLE

DATE

CONDITIONS OF APPROVAL, IF ANY:

of title to this lease."

*See Instructions On Reverse Side

Title 18 U.S.C. Section 1001, makes it a crime for any person knowingly and willfully to make to any department or agency of the United States any false, fictitious or fraudulent statements or representations as to any matter within its jurisdiction.

All distances must be from the outer boundaries of the Section.

Operator Meridian Oil Inc.			Lease Kelly A Com. (NM-01594)		Well No. 205
Unit Letter K	Section 15	Township 31 N.	Range 10 W	County San Juan	
Actual Footage Location of Wells: 1485 feet from the South line and 1460 feet from the West line					
Ground Level Elev. 6207	Producing Formation Fruitland Coal		Pool Undesignated		Dedicated Acreage: 160.15848 AC

1. Outline the acreage dedicated to the subject well by colored pencil or hachure marks on the plat below.
2. If more than one lease is dedicated to the well, outline each and identify the ownership thereof (both as to working interest and royalty).
3. If more than one lease of different ownership is dedicated to the well, have the interests of all owners been consolidated by communitization, unitization, force-pooling, etc?

☒ Yes ☐ No If answer is "yes," type of consolidation communitization

If answer is "no," list the owners and tract descriptions which have actually been consolidated. (Use reverse side of this form if necessary.)

No allowable will be assigned to the well until all interests have been consolidated (by communitization, unitization, forced-pooling, or otherwise) or until a non-standard unit, eliminating such interests, has been approved by the Division.

CERTIFICATION

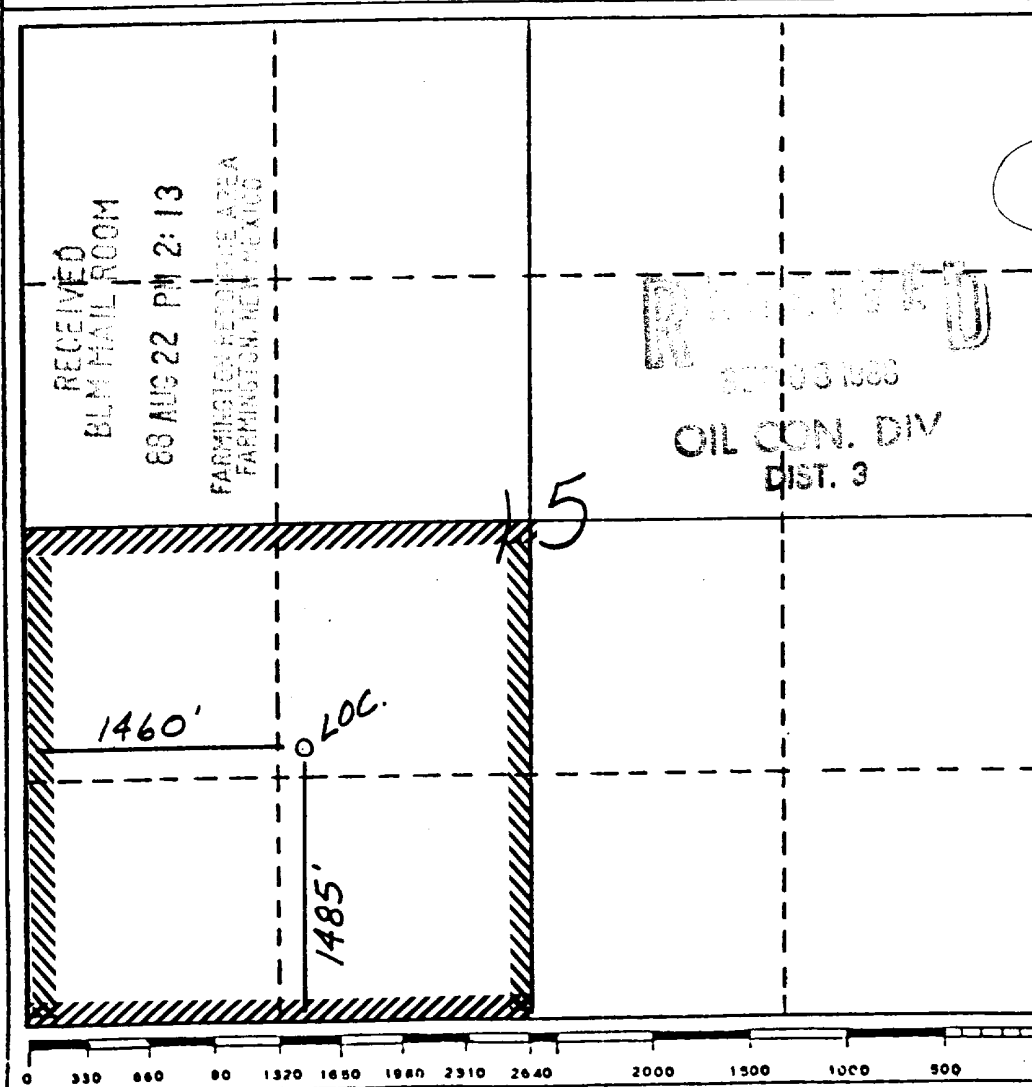
I hereby certify that the information contained herein is true and complete to the best of my knowledge and belief.

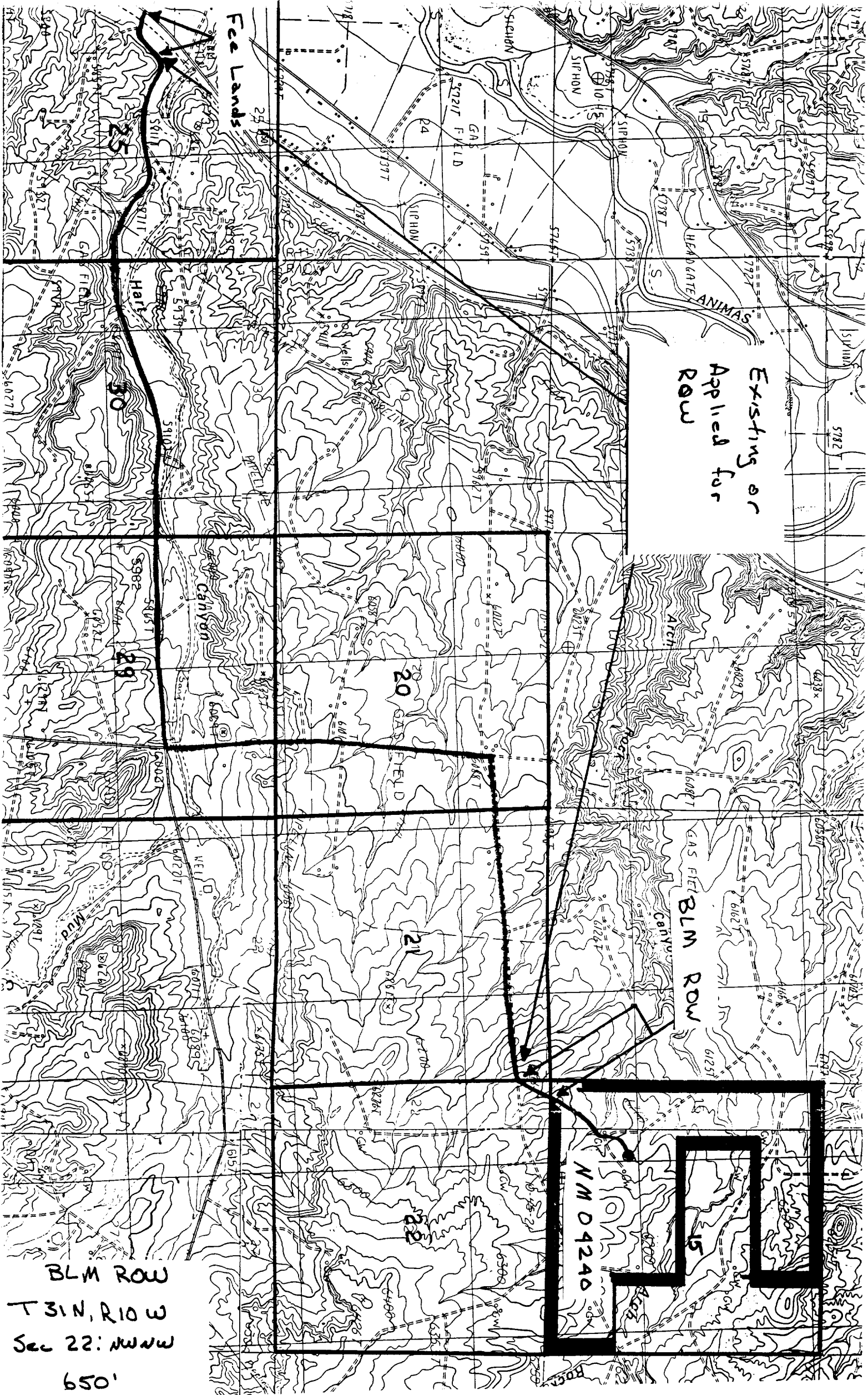
Name
Drilling Clerk
Position
Meridian Oil Inc.
Company
2-19-88
Date

I hereby certify that the well location shown on this plat is plotted from the notes of actual surveys made by me under my supervision, and that the same is true and correct to the best of my knowledge and belief.

Date Surveyed
7/23/88
Registered Professional Engineer and/or Land Surveyor

Neale C. Edwards
Certificate No.





Existing or
Applied for
ROW

BLM ROW

NM 04240

BLM ROW
T31N, R10W
Sec 22: NWNW
650'

Map 2