

STATE OF NEW MEXICO
ENERGY AND MINERALS DEPARTMENT

OIL CONSERVATION DIVISION
P. O. BOX 2088
SANTA FE, NEW MEXICO 87501
Change Loc.

NSC
Form C-102
Revised 10-1-7

All distances must be from the outer boundaries of the Section.

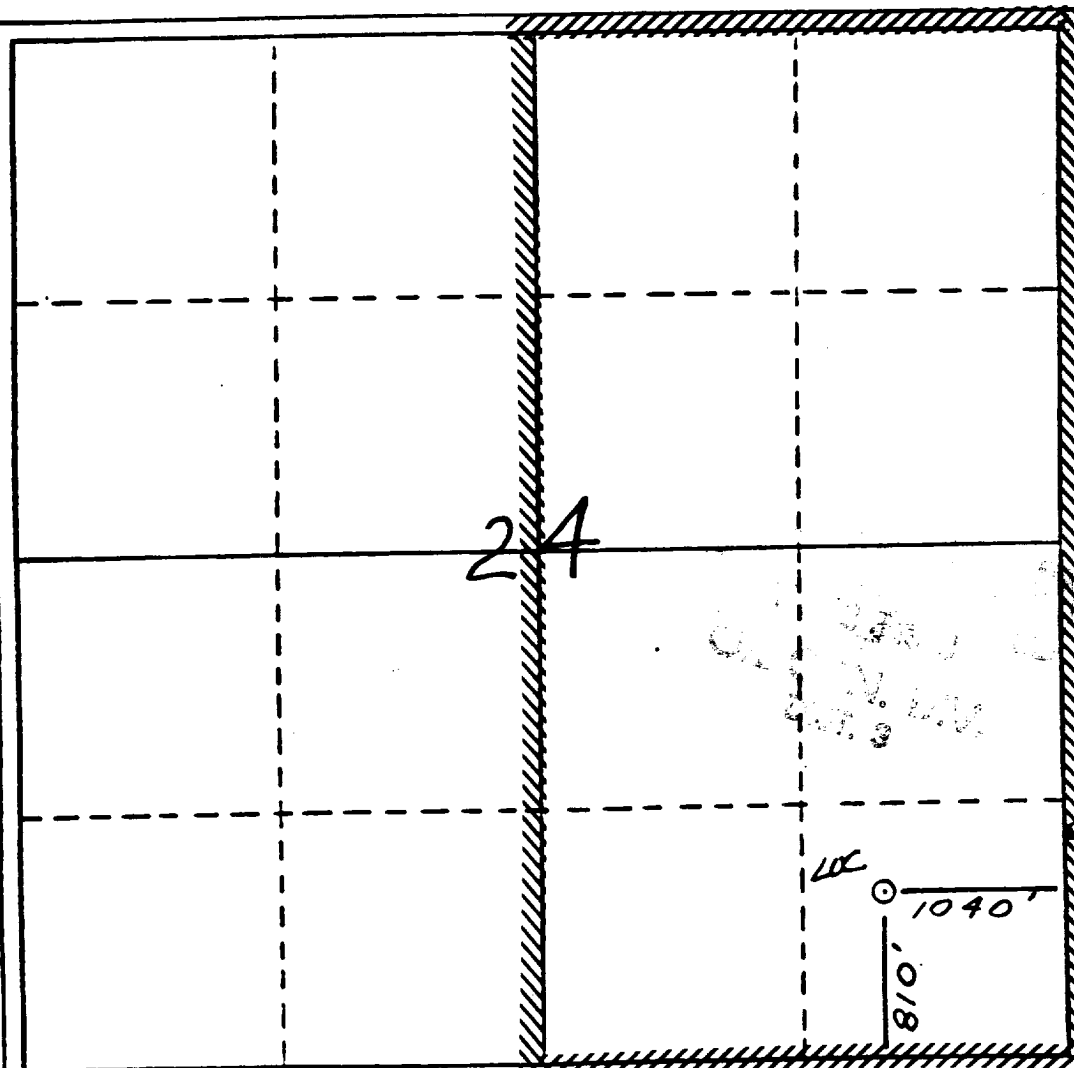
Operator Meridian Oil Inc.		Lease Allison Unit (Fee)		Well No. 130
Unit Letter P	Section 24	Township 32 North	Range 7 West	County San Juan
Actual Passage Location of Wells 810 feet from the South line and 1040 feet from the East line				
Ground Level Elev. 6442'	Producing Formation Fruitland Coal	Pool Undesignated	Dedicated Acreage: 320 Acres	

1. Outline the acreage dedicated to the subject well by colored pencil or hachure marks on the plat below.
2. If more than one lease is dedicated to the well, outline each and identify the ownership thereof (both as to working interest and royalty).
3. If more than one lease of different ownership is dedicated to the well, have the interests of all owners been consolidated by communitization, unitization, force-pooling, etc?

☒ Yes ☐ No If answer is "yes," type of consolidation unitization

If answer is "no," list the owners and tract descriptions which have actually been consolidated. (Use reverse side of this form if necessary.)

No allowable will be assigned to the well until all interests have been consolidated (by communitization, unitization, forced-pooling, or otherwise) or until a non-standard unit, eliminating such interests, has been approved by the Division



CERTIFICATION

I hereby certify that the information contained herein is true and complete to the best of my knowledge and belief.

[Signature]
Name

Regulatory Affairs

Position
Meridian Oil Inc.

Company
11-22-88

Date

I hereby certify that the location shown on this plat was obtained from field notes of actual surveys made by me or under my supervision, and that the same is true and correct to the best of my knowledge and belief.

[Signature]
One Surveyed

9-30-88

Registered Professional Engineer and/or Land Surveyor

Neale C. Edwards

Certificate No.

6257