

CONFIDENTIAL

SUBMIT IN TRIPLICATE*
(Other instructions on
reverse side)

Form approved.
Budget Bureau No. 1004-0136
Expires August 31, 1985

UNITED STATES
DEPARTMENT OF THE INTERIOR
BUREAU OF LAND MANAGEMENT

APPLICATION FOR PERMIT TO DRILL, DEEPEN, OR PLUG BACK

1a. TYPE OF WORK

DRILL ☒

DEEPEN ☐

PLUG BACK ☐

b. TYPE OF WELL

OIL
WELL ☐

GAS
WELL ☒

OTHER ☐

2. NAME OF OPERATOR

El Paso Natural Gas Company

3. ADDRESS OF OPERATOR

PO Box 4289, Farmington, NM 87499

4. LOCATION OF WELL (Report location clearly and in accordance with any State requirements.)

At surface 1630'S, 790'E

At proposed prod. zone

14. DISTANCE IN MILES AND DIRECTION FROM NEAREST TOWN OR POST OFFICE*

10miles from Allison, Colorado

15. DISTANCE FROM PROPOSED*

LOCATION TO NEAREST
PROPERTY OR LEASE LINE, FT.
(Also to nearest drlg. unit line, if any)

790

18. DISTANCE FROM PROPOSED LOCATION*
TO NEAREST WELL, DRILLING, COMPLETED,
OR APPLIED FOR, ON THIS LEASE, FT.

500'

16. NO. OF ACRES IN LEASE

1872.99

19. PROPOSED DEPTH

3113'

17. NO. OF ACRES ASSIGNED
TO THIS WELL

160

20. ROTARY OR CABLE TOOLS

Rotary

21. ELEVATIONS (Show whether DF, BT, GR, etc.)

6450' GL

DEEDS, GRANTS, AND AUTHORIZED ARE
SUBJECT TO THE FOLLOWING ATTACHED

22. APPROX. DATE WORK WILL START*

23.

PROPOSED CASING AND CEMENTING PROGRAM

SIZE OF HOLE	SIZE OF CASING	WEIGHT PER FOOT	SETTING DEPTH	QUANTITY OF CEMENT
12 1/4"	9 5/8"	32.3#	200'	130 cf. circulated
8 3/4"	7"	20.0#	3030'	231 cf cover Ojo Alamo
6 1/4"	5 1/2" liner	23.0#	3113'	do not cement

The Fruitland coal formation will be completed.

A 3000 psi WP and 6000 psi test double gate preventer equipped with blind and pipe rams will be used for blow out prevention on this well.

This gas is dedicated.

The SE/4 of Section 19 is dedicated to this well.

CONFIDENTIAL

OIL CON. DIV
DIST. 5

IN ABOVE SPACE DESCRIBE PROPOSED PROGRAM: If proposal is to deepen or plug back, give data on present productive zone and proposed new productive zone. If proposal is to drill or deepen directionally, give pertinent data on subsurface locations and measured and true vertical depths. Give blowout preventer program, if any.

24.

SIGNED

TITLE

Regulatory Affairs

APPROVED 11-14-88

(This space for Federal or State office use)

AS AMENDED

PERMIT NO.

APPROVAL DATE

NOV 17 1988

APPROVED BY

TITLE

AREA MANAGER

CONDITIONS OF APPROVAL, IF ANY:

*See Instructions On Reverse Side

Title 18 U.S.C. Section 1001, makes it a crime for any person knowingly and willfully to make to any department or agency of the United States any false, fictitious or fraudulent statements or representations as to any matter within its jurisdiction.

All distances must be from the outer boundaries of the Section.

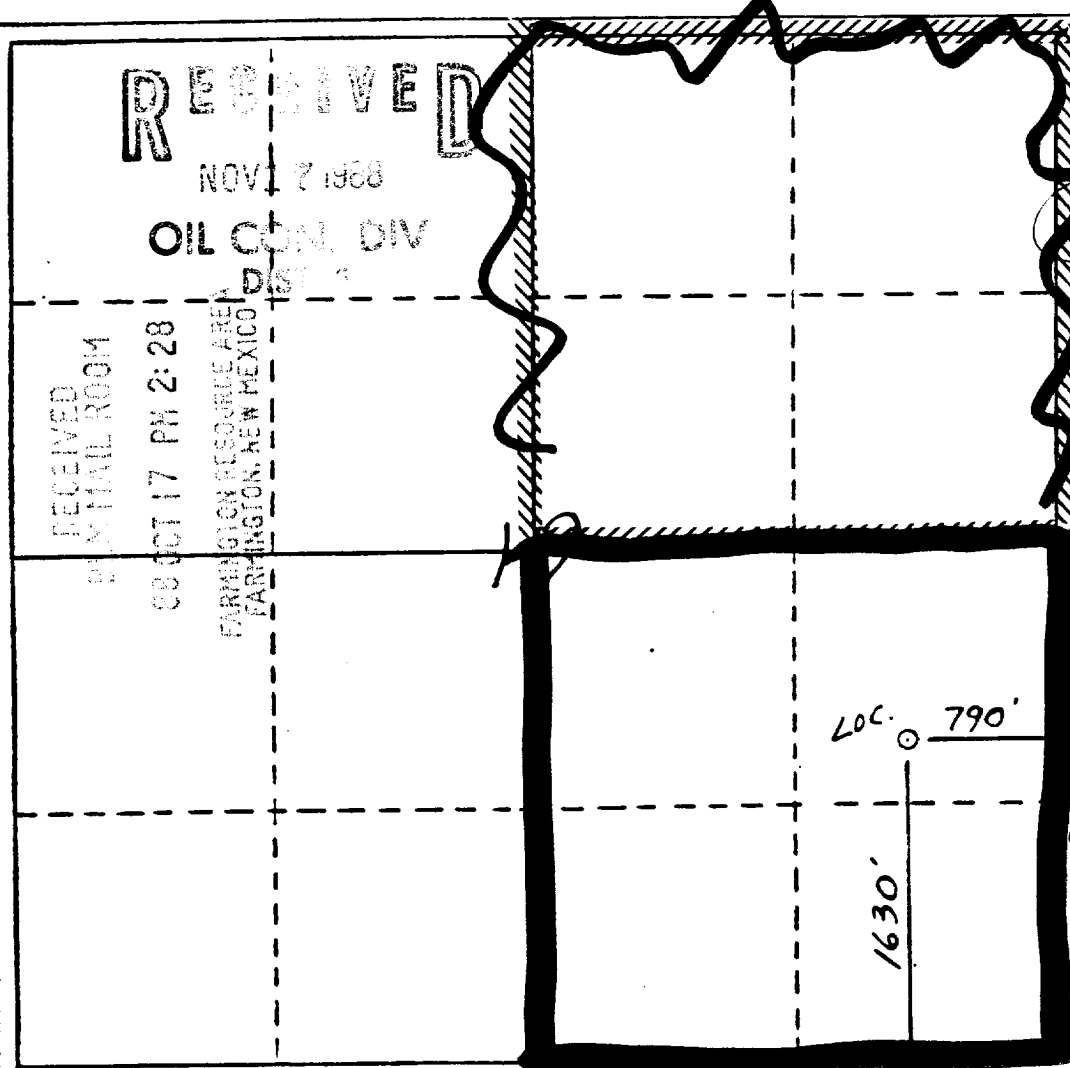
Operator <u>El Paso Natural Gas</u>		Lease <u>Allison Unit (SF-081155)</u>		Well No. <u>114</u>
Unit Letter <u>I</u>	Section <u>19</u>	Township <u>32 North</u>	Range <u>6 West</u>	County <u>San Juan</u>
Actual Footage Location of Well <u>1630</u> feet from the <u>South</u> line and <u>790</u> feet from the <u>East</u> line				
Ground Level Elev. <u>6450'</u>	Producing Formation <u>Fruitland Coal</u>	Pool <u>Undesignated</u>	Dedicated Acreage: <u>160</u> Acres	

1. Outline the acreage dedicated to the subject well by colored pencil or hatchure marks on the plat below.
2. If more than one lease is dedicated to the well, outline each and identify the ownership thereof (both as to working interest and royalty).
3. If more than one lease of different ownership is dedicated to the well, have the interests of all owners been consolidated by communitization, unitization, force-pooling, etc?

☒ Yes ☐ No If answer is "yes," type of consolidation unitization

If answer is "no," list the owners and tract descriptions which have actually been consolidated. (Use reverse side of this form if necessary.)

No allowable will be assigned to the well until all interests have been consolidated (by communitization, unitization, forced-pooling, or otherwise) or until a non-standard unit, eliminating such interests, has been approved by the Division



CERTIFICATION

I hereby certify that the information contained herein is true and complete to the best of my knowledge and belief.

Walter C. Edwards
Name

Regulatory Affairs

Position
El Paso Natural Gas

Company
10-15-78

Date

I hereby certify that the location shown on this plat was plotted from field notes of actual surveys made by me or under my supervision, and the same is true and correct to the best of my knowledge and belief.

Walter C. Edwards
Date Surveyed

10-1-68

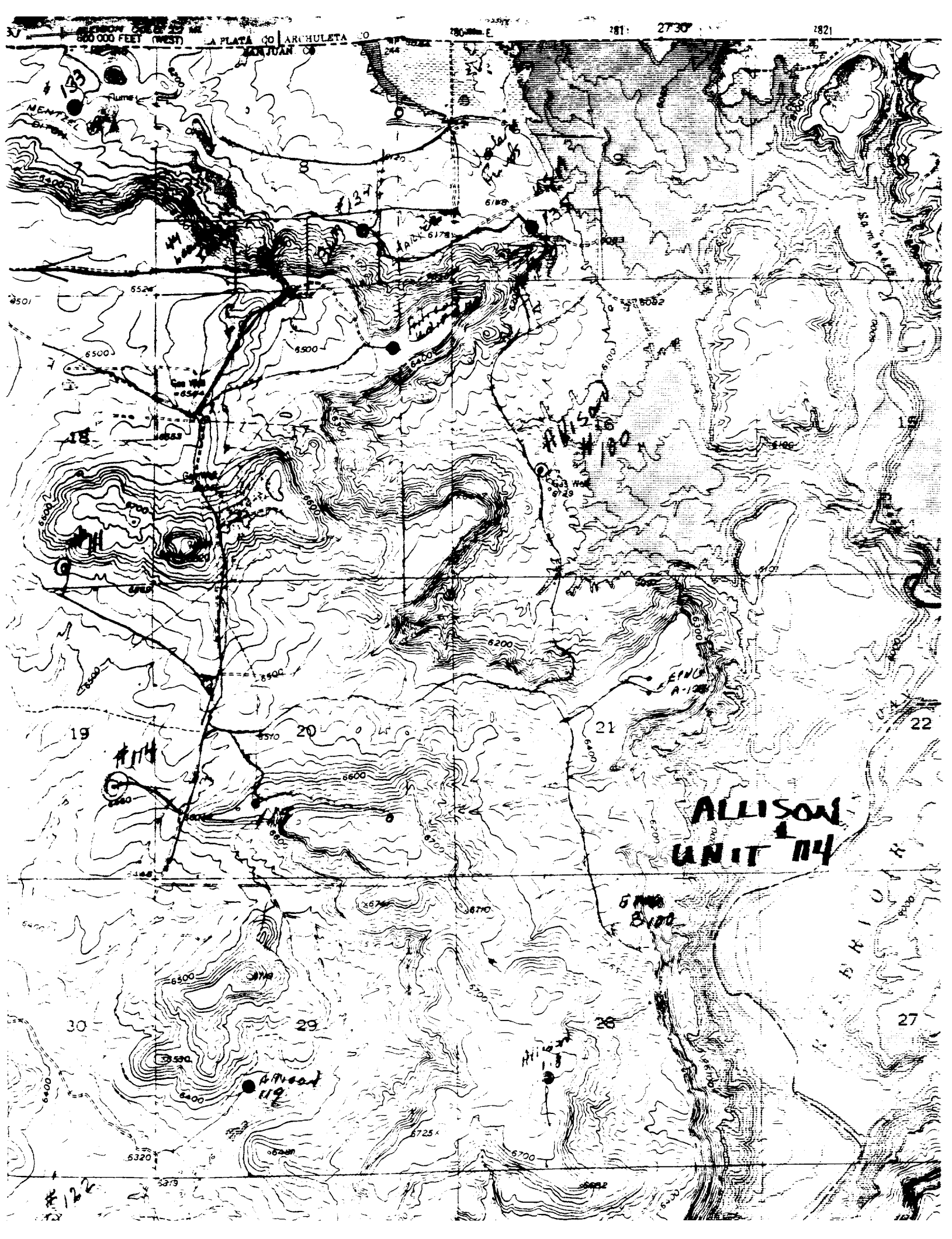
Registered Professional Engineer
and/or Land Surveyor

Walter C. Edwards

Certificate No.

657





CONFIDENTIAL

SUBMIT IN TRIPPLICATE*
(Other instructions on
reverse side)

Form approved.
Budget Bureau No. 1004-0136
Expires August 31, 1985

UNITED STATES
DEPARTMENT OF THE INTERIOR
BUREAU OF LAND MANAGEMENT

APPLICATION FOR PERMIT TO DRILL, DEEPEN, OR PLUG BACK

1a. TYPE OF WORK

DRILL ☒

DEEPEN ☐

PLUG BACK ☐

b. TYPE OF WELL

OIL
WELL ☐

GAS
WELL ☒

OTHER ☐

FARMINGTON RESOURCE AREA
FARMINGTON, NEW MEXICO

2. NAME OF OPERATOR

El Paso Natural Gas Company

3. ADDRESS OF OPERATOR

PO Box 4289, Farmington, NM 87499

4. LOCATION OF WELL (Report location clearly and in accordance with any State requirements.)*

At surface
1630'S, 790'E

At proposed prod. zone

14. DISTANCE IN MILES AND DIRECTION FROM NEAREST TOWN OR POST OFFICE*

10 miles from Allison, Colorado

15. DISTANCE FROM PROPOSED*

LOCATION TO NEAREST
PROPERTY OR LEASE LINE, FT.
(Also to nearest drilg. unit line, if any)

790

19. DISTANCE FROM PROPOSED LOCATION*

TO NEAREST WELL, DRILLING, COMPLETED,
OR APPLIED FOR, ON THIS LEASE, FT.

500'

16. NO. OF ACRES IN LEASE

1572.99

17. NO. OF ACRES ASSIGNED

TO THIS WELL
160

20. ROTARY OR CABLE TOOLS

Rotary

21. ELEVATIONS (Show whether DF, BT, GR, etc.)

6450' GL

DEEDS, MAPS, AND AUTHORIZED ARE
SERIALIZED AND INDEXED IN THE ATTACHED

22. APPROX. DATE WORK WILL START*

23. PROPOSED CASING AND CEMENTING PROGRAM

SIZE OF HOLE	SIZE OF CASING	WEIGHT PER FOOT	SETTING DEPTH	QUANTITY OF CEMENT
12 1/4"	9 5/8"	32.3#	200'	130 cf. circulated
8 3/4"	7"	20.0#	3030'	231 cf cover Ojo Alamo
6 1/4"	5 1/2" liner	23.0#	3113'	do not cement

The Fruitland coal formation will be completed.

A 3000 psi WP and 6000 psi test double gate preventer equipped with blind and pipe rams will be used for blow out prevention on this well.

This gas is dedicated.

The SE/4 of Section 19 is dedicated to this well.

RECEIVED

NOV 17 1988

OIL CON. DIV
DIST. 2

IN ABOVE SPACE DESCRIBE PROPOSED PROGRAM: If proposal is to deepen or plug back, give data on present productive zone and proposed new productive zone. If proposal is to drill or deepen directionally, give pertinent data on subsurface locations and measured and true vertical depths. Give blowout preventer program, if any.

24. SIGNED [Signature] TITLE Regulatory Affairs APPROVED 11-14-88

(This space for Federal or State office use)

PERMIT NO. _____

APPROVAL DATE _____

APPROVED BY _____

TITLE _____

CONDITIONS OF APPROVAL, IF ANY:

AS AMENDED

NOV 17 1988

AREA MANAGER

*See Instructions On Reverse Side