

Amended Location

ok
Q

Form C-102
Revised 1-1-89

Submit to Appropriate
District Office
State Lease - 4 copies
Fee Lease - 3 copies

State of New Mexico
Energy, Minerals and Natural Resources Department

OIL CONSERVATION DIVISION
P.O. Box 2088
Santa Fe, New Mexico 87504-2088

DISTRICT I
P.O. Box 1980, Hobbs, NM 88240

DISTRICT II
P.O. Drawer DD, Artesia, NM 88210

DISTRICT III
1000 Rio Brazos Rd., Aztec, NM 87410

WELL LOCATION AND ACREAGE DEDICATION PLAT
All Distances must be from the outer boundaries of the section

Operator GREAT WESTERN DRILLING COMPANY		Lease J. E. DECKER		Well No. 10
Unit Letter K	Section 7	Township 32 N	Range 11 W	County San Juan
Actual Footage Location of Well: 1690 feet from the South line and 1775 feet from the West line				
Ground level Elev. 6479	Producing Formation FRUITLAND COAL	Pool <i>Biden</i> FRUITLAND COAL	Dedicated Acreage: 332.27 Acres	

- Outline the acreage dedicated to the subject well by colored pencil or hatchure marks on the plat below.
- If more than one lease is dedicated to the well, outline each and identify the ownership thereof (both as to working interest and royalty).
- If more than one lease of different ownership is dedicated to the well, have the interest of all owners been consolidated by communitization, unitization, force-pooling, etc.?
 Yes No If answer is "yes" type of consolidation _____
 If answer is "no" list the owners and tract descriptions which have actually been consolidated. (Use reverse side of this form if necessary.)
 No allowable will be assigned to the well until all interests have been consolidated (by communitization, unitization, forced-pooling, or otherwise) or until a non-standard unit, eliminating such interest, has been approved by the Division.

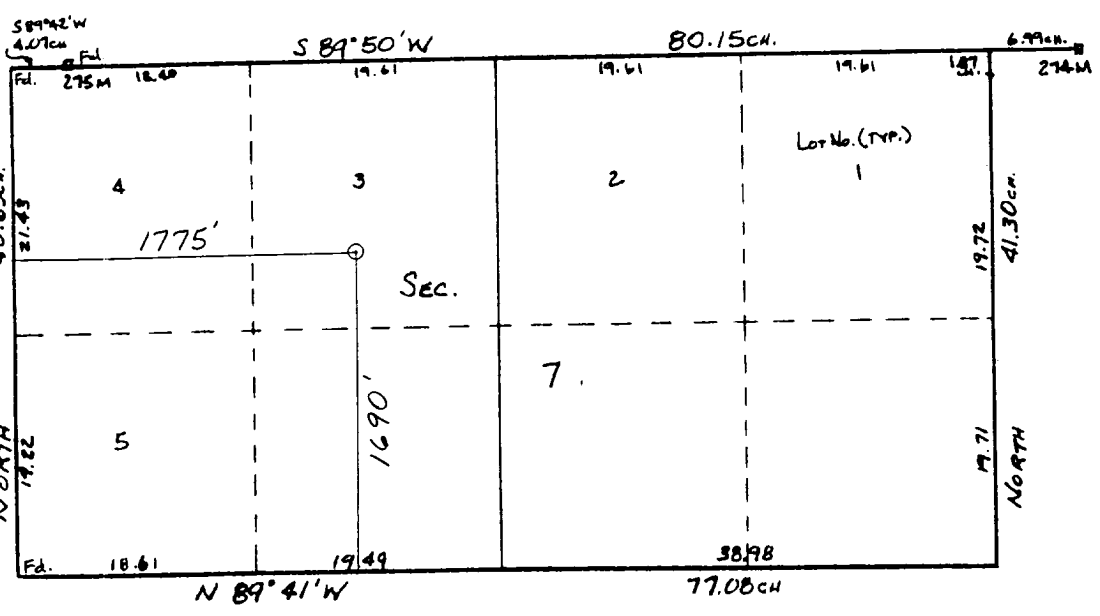
OPERATOR CERTIFICATION
I hereby certify that the information contained herein is true and complete to the best of my knowledge and belief.

Signature: *D. E. Baxter*
 Printed Name: **D. E. Baxter**
 Position: **Superintendent**
 Company: **Great Western Drlg. Co.**
 Date: **October 24, 1989**

SURVEYOR CERTIFICATION
I hereby certify that the well location shown on this plat was plotted from field notes of actual surveys made by me or under my supervision, and that the same is true and correct to the best of my knowledge and belief.
10-20-89

Date Surveyed
William E. Mahnke II

Signature of Surveyor: *William E. Mahnke II*
 Professional Surveyor
WILLIAM E. MAHNKE II
NEW MEXICO
#8466
 Certified City No. **8466**
PROFESSIONAL LAND SURVEYOR



1"=1000'

RECEIVED

OCT 25 1989

OIL CON. DIV.
DIST. 3