

UNITED STATES  
DEPARTMENT OF THE INTERIOR  
BUREAU OF LAND MANAGEMENT

APPLICATION FOR PERMIT TO DRILL, DEEPEN, OR PLUG BACK

1a. TYPE OF WORK

DRILL ☒

DEEPEN ☐

PLUG BACK ☐

b. TYPE OF WELL

OIL  
WELL ☐

GAS  
WELL ☒

OTHER

SINGLE  
ZONE ☐

MULTIPLE  
ZONE ☐

2. NAME OF OPERATOR

Northwest Pipeline Corporation

3. ADDRESS OF OPERATOR

3539 East 30th Street - Farmington, NM 87401

4. LOCATION OF WELL (Report location clearly and in accordance with any State requirements.)\*

At surface

940' FSL & 2020' FWL SE/4 SW/4

At proposed prod. zone

Same

14. DISTANCE IN MILES AND DIRECTION FROM NEAREST TOWN OR POST OFFICE\*

12 miles northwest of Navajo Dam

15. DISTANCE FROM PROPOSED\*

LOCATION TO NEAREST  
PROPERTY OR LEASE LINE, FT.  
(Also to nearest drlg. unit line, if any)

940'

16. NO. OF ACRES IN LEASE

1720

17. NO. OF ACRES ASSIGNED  
TO THIS WELL

320

18. DISTANCE FROM PROPOSED LOCATION\*  
TO NEAREST WELL, DRILLING, COMPLETED,  
OR APPLIED FOR, ON THIS LEASE, FT.

200'

19. PROPOSED DEPTH

3265'

20. ROTARY OR CABLE TOOLS

Rotary

21. ELEVATIONS (Show whether DE, PT, GR, etc.)  
6271' GR  
**DRILLING OPERATIONS AUTHORIZED ARE  
SUBJECT TO COMPLIANCE WITH ATTACHED  
"GENERAL REQUIREMENTS"**

22. APPROX. DATE WORK WILL START\*

8-23-89

23. PROPOSED CASING AND CEMENTING PROGRAM

This action is subject to technical and  
procedural review pursuant to 43 CFR 3165.3  
and appeal pursuant to 43 CFR 3165.4.

SIZE OF HOLE	SIZE OF CASING	WEIGHT PER FOOT	SETTING DEPTH	
13-1/2"	9-5/8"	36# K-55	200'	195 cu.ft.
8-3/4"	7"	20# K-55	2710'	174 cu.ft.
6-1/4"	5-1/2"	23# P110	2610'-3265'	None

- 1) Plan to drill Fruitland Formation from 2730' to 3265' and complete open hole with a perforated liner in coal zones.
- 2) The west half of Section 29 is dedicated to this well.
- 3) Because of existing well pads and topography it was necessary to stake this well unorthodox.

**RECEIVED**  
OCT 02 1989

**OIL CON. DIV.**  
DIST. 3

IN ABOVE SPACE DESCRIBE PROPOSED PROGRAM: If proposal is to deepen or plug back, give data on present productive zone and proposed new productive zone. If proposal is to drill or deepen directionally, give pertinent data on subsurface locations and measured and true vertical depths. Give blowout preventer program, if any.

24.

SIGNED

*J.P. Vaughan*  
J.P. Vaughan

TITLE Prod. & Drlg. Engineer

DATE

8-1-89

(This space for Federal or State office use)

**APPROVED  
AS AMENDED**

PERMIT NO.

APPROVAL DATE

APPROVED BY

TITLE

CONDITIONS OF APPROVAL, IF ANY:

DATE

SEP 28 1989

**AREA MANAGER**

\*See Instructions On Reverse Side

OIL CONSERVATION DIVISION

P.O. Box 2088  
Santa Fe, New Mexico 87504-2088

RECEIVED  
OCT 02 1989

DISTRICT I  
P.O. Box 1980, Hobbs, NM 88240

DISTRICT II  
P.O. Drawer DD, Artesia, NM 88210

DISTRICT III  
1000 Rio Brazos Rd., Aztec, NM 87410

WELL LOCATION AND ACREAGE DEDICATION PLAT

All Distances must be from the outer boundaries of the section

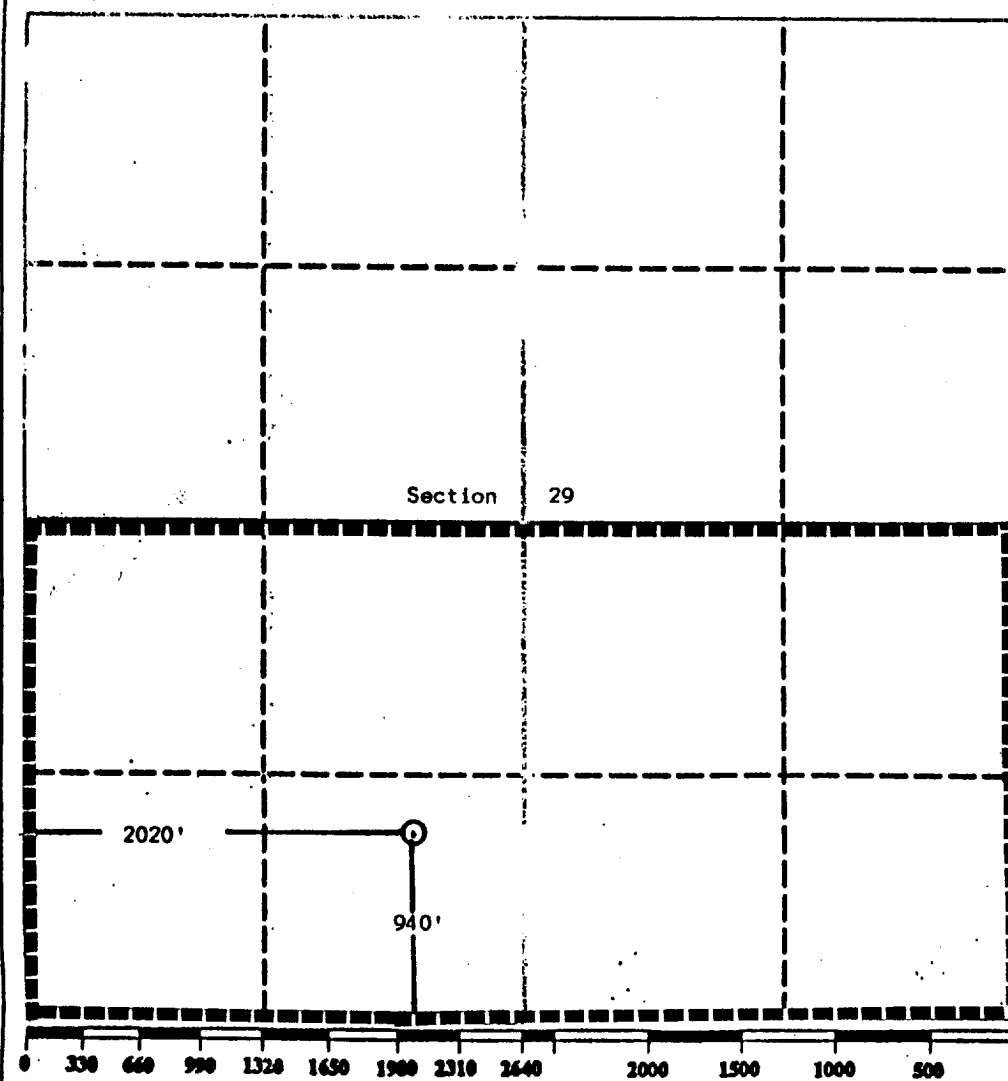
OIL CON. DIV.  
DIST. 3

Operator Northwest Pipeline Corporation			Lease San Juan 32-8		Well No. 208
Unit Letter N	Section 29	Township 32 North	Range 8 West	County San Juan	

Actual Footage Location of Well:

940 feet from the South line and 2020 feet from the West line	Producing Formation Fruitland	Pool Basin Fruitland Pool	Dedicated Acreage: 320 Acres
---	----------------------------------	------------------------------	---------------------------------

1. Outline the acreage dedicated to the subject well by colored pencil or hatchure marks on the plat below.
2. If more than one lease is dedicated to the well, outline each and identify the ownership thereof (both as to working interest and royalty).
3. If more than one lease of different ownership is dedicated to the well, have the interest of all owners been consolidated by communitization, unitization, force-pooling, etc.?  
☒ Yes ☐ No If answer is "yes" type of consolidation Unitization  
If answer is "no" list the owners and tract descriptions which have actually been consolidated. (Use reverse side of this form if necessary).  
No allowable will be assigned to the well until all interests have been consolidated (by communitization, unitization, forced-pooling, or otherwise) or until a non-standard unit, eliminating such interest, has been approved by the Division.



OPERATOR CERTIFICATION

I hereby certify that the information contained herein is true and complete to the best of my knowledge and belief.

Signature  
Jeff Vaughan  
Printed Name  
Jeff Vaughan  
Position  
Prod. & Drilg. Eng.  
Company  
Northwest Pipeline Corp.  
Date  
7/31/89

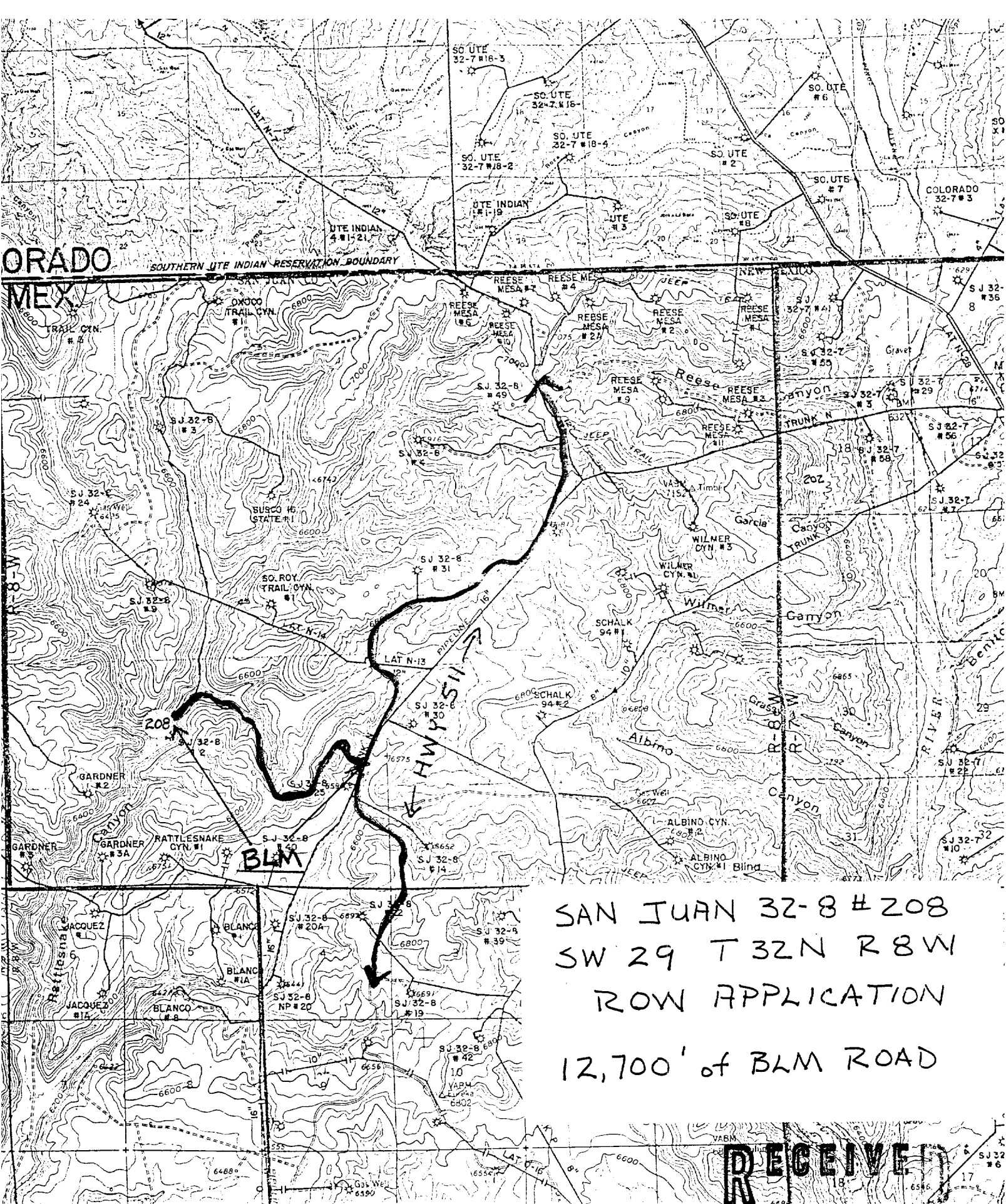
SURVEYOR CERTIFICATION

I hereby certify that the well location shown on this plat was plotted from field notes of actual surveys made by me or under my supervision, and that the same is true and correct to the best of my knowledge and belief.

Date Surveyed  
May 23, 1989  
Signature & Seal of Professional Surveyor  
EDGAR L. RISENHOVER  
NEW MEXICO  
5979  
Edgar L. Risenhoover

ORADO  
MEX.

SOUTHERN UTE INDIAN RESERVATION BOUNDARY



SAN JUAN 32-8 #208  
SW 29 T 32N R 8W  
ROW APPLICATION  
12,700' of BLM ROAD

RECEIVED

OCT 02 1989

OIL CON. DIV.  
DIST. 2