

UNITED STATES
DEPARTMENT OF THE INTERIOR
BUREAU OF LAND MANAGEMENT

SUBMIT TO
(Other instructions on
reverse side)

Budget Bureau No. 1004-0-100
Expires August 31, 1985

APPLICATION FOR PERMIT TO DRILL, DEEPEN, OR PLUG BACK

1a. TYPE OF WORK
DRILL ☒ DEEPEN ☐ PLUG BACK ☐

b. TYPE OF WELL
OIL WELL ☐ GAS WELL ☒ OTHER ☐

SINGLE ZONE ☒ MULTIPLE ZONE ☐

2. NAME OF OPERATOR
NORTHWEST PIPELINE CORP.

3. ADDRESS OF OPERATOR

4. LOCATION OF WELL (Report location clearly and in accordance with any State requirements.)
3539 EAST 30TH ST. FARMINGTON, NM 87401
At surface 1248' FSL UNIT N
1653' FWL
At proposed prod. zone SAME

14. DISTANCE IN MILES AND DIRECTION FROM NEAREST TOWN OR POST OFFICE
APPROXIMATELY 8 MILES TO CEDAR HILL, NM

15. DISTANCE FROM PROPOSED LOCATION TO NEAREST PROPERTY OR LEASE LINE, FT.
(Also to nearest drilg. unit line, if any) 1248'

18. DISTANCE FROM PROPOSED LOCATION TO NEAREST WELL, DRILLING, COMPLETED, OR APPLIED FOR, ON THIS LEASE, FT.
± 140'

21. ELEVATIONS (Show whether DF, RT, GR, etc.)

16. NO. OF ACRES IN LEASE
480

19. PROPOSED DEPTH
3420' KB

17. NO. OF ACRES ASSIGNED TO THIS WELL
N/2 320 ACRES

20. ROTARY OR CABLE TOOLS
ROTARY

22. APPROX. DATE WORK WILL START
JUNE 15, 1990

THIS ACTION IS SUBJECT TO TECHNICAL AND procedural review pursuant to 43 CFR 3105.5 and appeal pursuant to 43 CFR 3105.6

PROPOSED CASING AND CEMENTING PROGRAM

	WEIGHT PER FOOT	SETTING DEPTH
12 1/4"	36# K-55	200'
8 3/4"	23# K-55	3165'
6 1/4"	23# P-110	3420'

DRILLING OPERATIONS AUTHORIZED ARE SUBJECT TO COMPLIANCE WITH ATTACHED QUANTITY OF CEMENT
"GENERAL REQUIREMENTS"
120 SK (143 cu ft)
435 SK (834 cu ft)
NONE - OPEN HOLE

1) PLAN TO DRILL THE FRUITLAND COAL FROM 3187' TO 3417' AND SET LINER IN OPEN HOLE. IF OPEN HOLE PROVES UNPRODUCTIVE, THE 5 1/2" LINER WILL BE CHANGED TO 15.5# K-55, CEMENTED AND HYDRAULICALLY STIMULATED AS NECESSARY.

2) THE WEST HALF OF SECTION 17 IS DEDICATED TO THIS WELL

RECEIVED

JUN 18 1990

OIL CON. DIV

DIST. 3

IN ABOVE SPACE DESCRIBE PROPOSED PROGRAM: If proposal is to deepen or plug back, give data on present productive zone and present productive zone. If proposal is to drill or deepen directionally, give pertinent data on subsurface locations and measured and true vertical depths. Give blowout preventer program, if any.

24. SIGNED Mark McCallister

TITLE PRODUCTION & DRILLING ENGINEER

DATE 4/24/90

(This space for Federal or State office use)

PERMIT NO.

APPROVAL DATE

APPROVED BY
CONDITIONS OF APPROVAL, IF ANY:

TITLE

APPROVED

DATE JUN 13 1990

AREA MANAGER

*See Instructions On Reverse Side

Title 18 U.S.C. Section 1001, makes it a crime for any person knowingly and willfully to make to any department or agency of the United States any false, fictitious or fraudulent statements or representations as to any matter within its jurisdiction.

Submit to Appropriate
District Office
State Lease - 4 copies
Fee Lease - 3 copies

State of New Mexico
Energy, Minerals and Natural Resources Department

Form C-102
Revised 1-1-89

OIL CONSERVATION DIVISION

P.O. Box 2088
Santa Fe, New Mexico 87504-2088

DISTRICT I
P.O. Box 1980, Hobbs, NM 88240

DISTRICT II
P.O. Drawer DD, Artesia, NM 88210

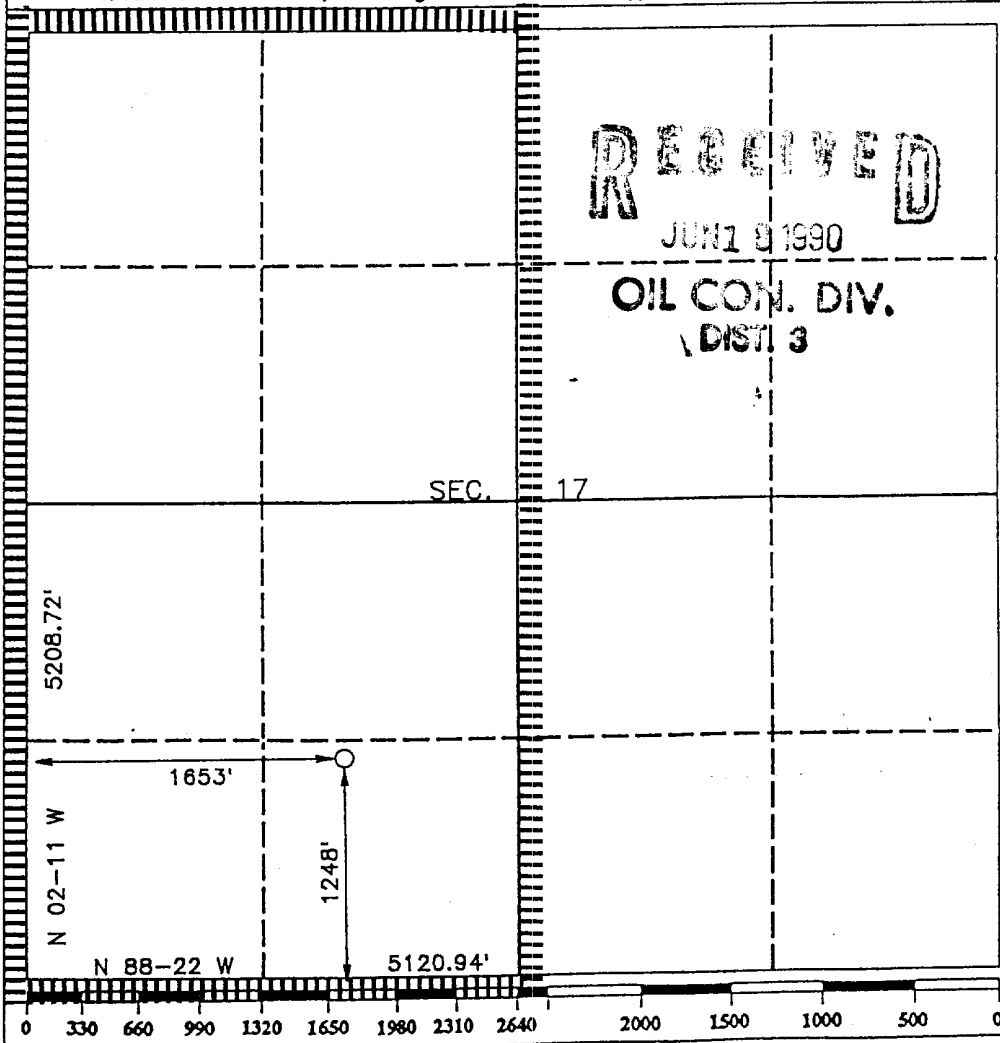
DISTRICT III
1000 Rio Brazos Rd., Aztec, NM 87410

WELL LOCATION AND ACREAGE DEDICATION PLAT

All Distances must be from the outer boundaries of the section

Operator NORTHWEST PIPELINE CORP.			Lease COX CANYON UNIT		Well No. 204
Unit Letter N	Section 17	Township T.32 N.	Range R.11 W.	County SAN JUAN COUNTY	
Actual Footage Location of Well: 1248 feet from the SOUTH line and 1653 feet from the WEST line					
Ground level Elev. 6766	Producing Formation FRUITLAND		Pool BASIN FRUITLAND COAL	Dedicated Acreage: W/2 320 Acres	

- Outline the acreage dedicated to the subject well by colored pencil or hatchure marks on the plat below.
- If more than one lease is dedicated to the well, outline each and identify the ownership thereof (both as to working interest and royalty).
- If more than one lease of different ownership is dedicated to the well, have the interest of all owners been consolidated by communization, unitization, force-pooling, etc.?
☒ Yes ☐ No If answer is "yes" type of consolidation **UNITIZED**
If answer is "no" list the owners and tract descriptions which have actually been consolidated. (Use reverse side of this form if necessary.)
No allowable will be assigned to the well until all interests have been consolidated (by communization, unitization, forced-pooling, or otherwise) or until a non-standard unit, eliminating such interest, has been approved by the Division.



OPERATOR CERTIFICATION

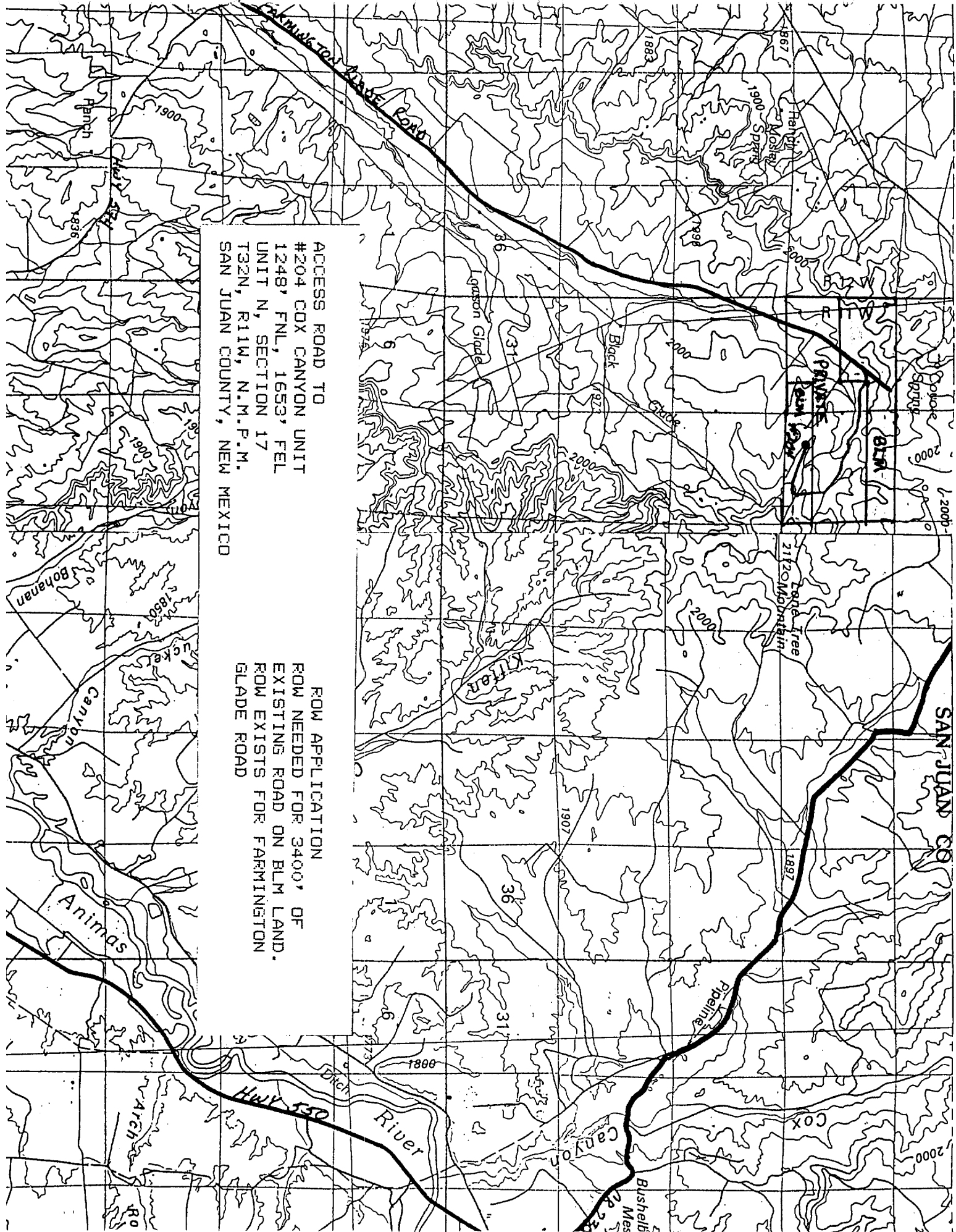
I hereby certify that the information contained herein is true and complete to the best of my knowledge and belief.

Signature *Mark McCallister*
Printed Name **MARK MCCALLISTER**
Position **PROD. & DRILG. ENGINEER**
Company **NORTHWEST PIPELINE CORP.**
Date **APRIL 24, 1990**

SURVEYOR CERTIFICATION

I hereby certify that the well location shown on this plat was plotted from field notes of actual surveys made by me or under my supervision, and that the same is true and correct to the best of my knowledge and belief.

Date Surveyed **APRIL 20, 1990**
Signature & Seal of Professional Surveyor
R. HOWARD DAGGETT
Certificate No. **9670**
Registered Professional Land Surveyor



ACCESS ROAD TO
#204 COX CANYON UNIT
1248' FNL, 1653' FEL
UNIT N, SECTION 17
T32N, R11W, N.M.P.M.
SAN JUAN COUNTY, NEW MEXICO

ROW APPLICATION
ROW NEEDED FOR 3400' OF
EXISTING ROAD ON BLM LAND.
ROW EXISTS FOR FARMINGTON
GLADE ROAD