

UNITED STATES
DEPARTMENT OF THE INTERIOR
BUREAU OF LAND MANAGEMENT

(Other instructions on reverse side)

With approved...
Budget Bureau No. 1004-0136
Expires August 31, 1985

APPLICATION FOR PERMIT TO DRILL, DEEPEN, OR PLUG BACK

1a. TYPE OF WORK
 DRILL DEEPEN PLUG BACK
 b. TYPE OF WELL
 OIL WELL GAS WELL OTHER SINGLE ZONE MULTIPLE ZONE
 2. NAME OF OPERATOR
 NORTHWEST PIPELINE CORPORATION
 3. ADDRESS OF OPERATOR
 3539 EAST 30TH ST, FARMINGTON, NM 87401
 4. LOCATION OF WELL (Report location clearly and in accordance with any State requirements.)
 At surface: 1144' FNL, 1068' FEL, UNIT A
 At proposed prod. zone: SAME
 14. DISTANCE IN MILES AND DIRECTION FROM NEAREST TOWN OR POST OFFICE*
 APPROXIMATELY 6.25 MILES NW OF CEDAR HILL, NM
 15. DISTANCE FROM PROPOSED LOCATION TO NEAREST PROPERTY OR LEASE LINE, FT. (Also to nearest drlg. unit line, if any)
 1068'
 16. NO. OF ACRES IN LEASE
 1384.60
 17. NO. OF ACRES ASSIGNED TO THIS WELL
 E/2 320 ACRES
 18. DISTANCE FROM PROPOSED LOCATION TO NEAREST WELL, DRILLING, COMPLETED, OR APPLIED FOR, ON THIS LEASE, FT.
 ± 173'
 19. PROPOSED DEPTH
 3245' KB
 20. ROTARY OR CABLE TOOLS
 ROTARY
 21. ELEVATIONS (Show whether DF, RT, GR, etc.)
 6539 GR

5. LEASE DESIGNATION AND SERIAL NO.
 NW-03189
 6. IF INDIAN, ALLOTTEE OR TRIBE NAME
 7. UNIT AGREEMENT NAME
 COX CANYON UNIT
 8. FARM OR LEASE NAME
 COX CANYON UNIT
 9. WELL NO.
 # 206
 10. FIELD AND POOL, OR WILDCAT
 BASIN FRUITLAND COAL
 11. SEC., T., R., M., OR BLK. AND SURVEY OR AREA
 SECTION 21, T32N R11W
 12. COUNTY OR PARISH
 SAN JUAN
 13. STATE
 NM

This action is subject to technical and procedural review pursuant to 43 CFR 3105.3 and appeal pursuant to 43 CFR 3105.4

PROPOSED CASING AND CEMENTING PROGRAM

WEIGHT PER FOOT	SETTING DEPTH	QUANTITY OF CEMENT
12 1/4" 36# K-55	200'	120 SX (143 cu ft)
8 3/4" 23# K-55	2960'	410 SX (782 cu ft)
5 1/2" 23#	2860' to 3255'	NONE - OPEN HOLE

OPERATIONS AUTHORIZED ARE SUBJECT TO COMPLIANCE WITH ATTACHED GENERAL REQUIREMENTS

1) PLAN TO DRILL FRUITLAND FROM 2984' TO 3247' AND SET LINER IN OPEN HOLE. IF OPEN HOLE PROVES UNPRODUCTIVE, THE 5 1/2" LINER WILL BE CHANGED TO 15.5# K-55, CEMENTED AND HYDRAULICALLY STIMULATED AS NECESSARY.

2) THE E/2 HALF OF SECTION 21 IS DEDICATED TO THIS WELL

RECEIVED
JUN 18 1990

IN ABOVE SPACE DESCRIBE PROPOSED PROGRAM: If proposal is to deepen or plug back, give data on present productive zone and proposed new productive zone. If proposal is to drill or deepen directionally, give pertinent data on subsurface locations and measured and true vertical depths. Give blowout preventer program, if any.

24. SIGNED Mark McAdams TITLE PRODUCTION & DRILLING ENGINEER DATE 4/20/90

(This space for Federal or State office use)

PERMIT NO. _____ APPROVAL DATE _____

APPROVED

APPROVED BY _____ TITLE _____ DATE JUN 14 1990

CONDITIONS OF APPROVAL, IF ANY:

AREA MANAGER

OK
E

*See Instructions On Reverse Side

Submit to Appropriate District Office
State Lease - 4 copies
Fee Lease - 3 copies

State of New Mexico
Energy, Minerals and Natural Resources Department

Form C-102
Revised 1-1-89

OIL CONSERVATION DIVISION

P.O. Box 2088
Santa Fe, New Mexico 87504-2088

DISTRICT I
P.O. Box 1980, Hobbs, NM 88240

DISTRICT II
P.O. Drawer DD, Artesia, NM 88210

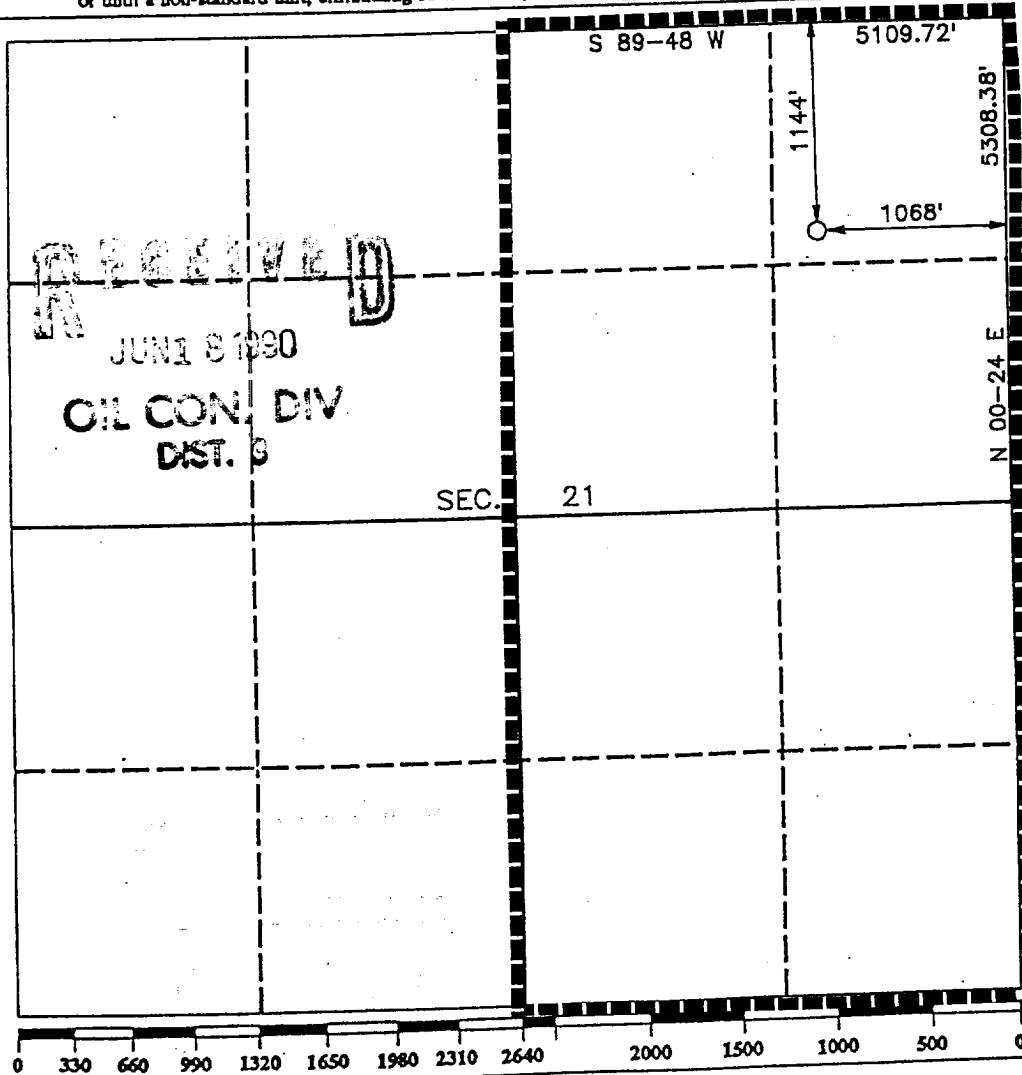
DISTRICT III
1000 Rio Brazos Rd., Aztec, NM 87410

WELL LOCATION AND ACREAGE DEDICATION PLAT

All Distances must be from the outer boundaries of the section

Operator NORTHWEST PIPELINE CORP.			Lease COX CANYON UNIT		Well No. 206
Unit Letter A	Section 21	Township T.32 N.	Range R.11 W.	County SAN JUAN COUNTY	NMPM
Actual Footage Location of Well: 1144 feet from the NORTH line and 1068 feet from the EAST line					
Ground level Elev. 6539	Producing Formation FRUITLAND		Pool BASIN FRUITLAND COAL		Dedicated Acreage: E/2 320 Acres

- Outline the acreage dedicated to the subject well by colored pencil or hachure marks on the plat below.
- If more than one lease is dedicated to the well, outline each and identify the ownership thereof (both as to working interest and royalty).
- If more than one lease of different ownership is dedicated to the well, have the interest of all owners been consolidated by communitization, unitization, force-pooling, etc.?
 Yes No If answer is "yes" type of consolidation UNITIZED
 If answer is "no" list the owners and tract descriptions which have actually been consolidated. (Use reverse side of this form if necessary.)
 No allowable will be assigned to the well until all interests have been consolidated (by communitization, unitization, forced-pooling, or otherwise) or until a non-standard unit, eliminating such interest, has been approved by the Division.



OPERATOR CERTIFICATION

I hereby certify that the information contained herein is true and complete to the best of my knowledge and belief.

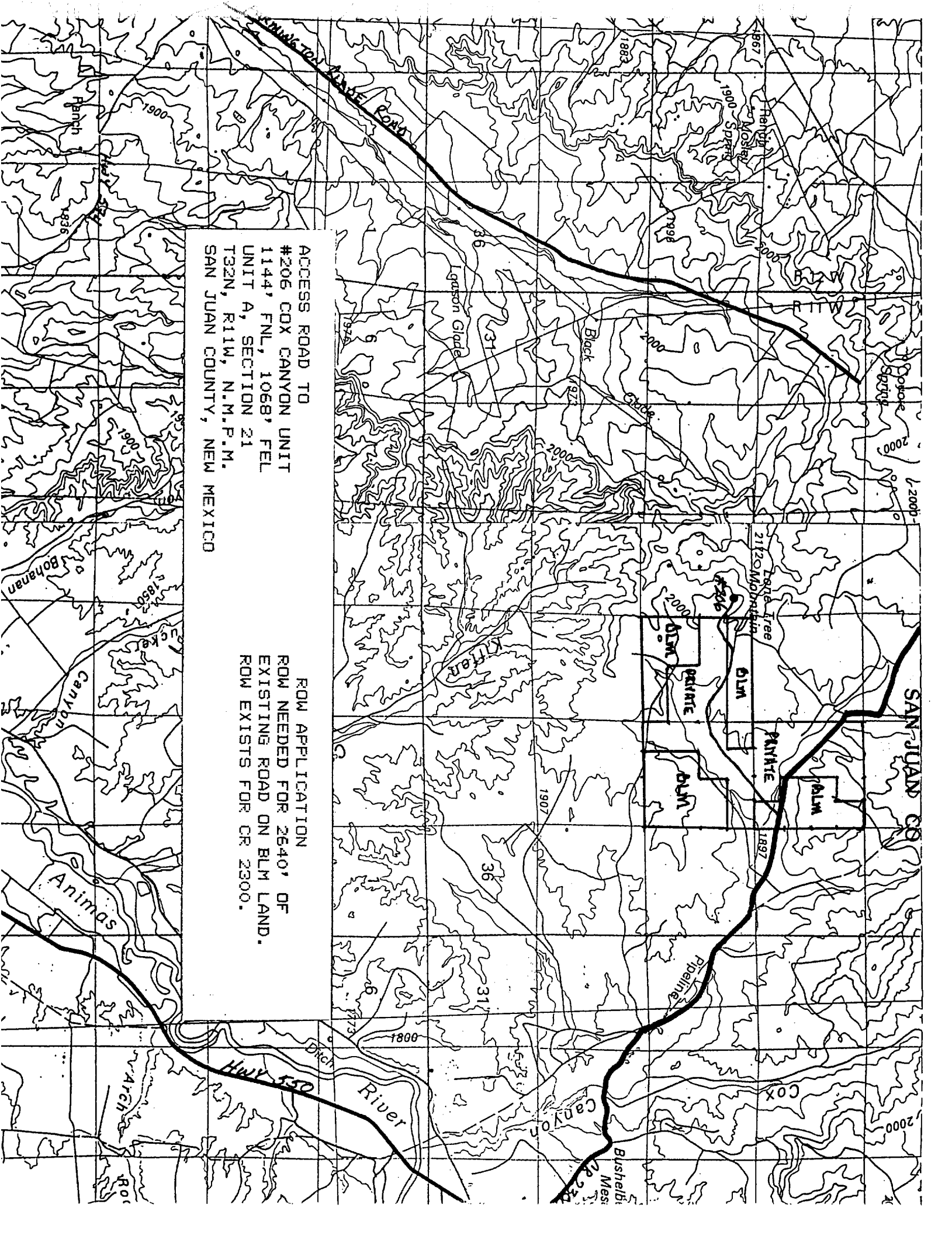
Signature: *Mark McCallister*
 Printed Name: **MARK MCCALLISTER**
 Position: **PROD. & DRLG. ENGINEER**
 Company: **NORTHWEST PIPELINE CORP.**
 Date: **APRIL 17, 1990**

SURVEYOR CERTIFICATION

I hereby certify that the well location shown on this plat was plotted from field notes of actual surveys made by me or under my supervision, and that the same is true and correct to the best of my knowledge and belief.

Date Surveyed: **APRIL 16, 1990**
 Signature & Seal of Professional Surveyor:
R. Howard Daugert
R. HOWARD DAUGERT
9879
 Certificate No. **9879**
 Registered Professional Land Surveyor

RECEIVED
JUN 8 1990
OIL CON. DIV.
DIST. 3



ACCESS ROAD TO
 #206 COX CANYON UNIT
 1144' FNL, 1068' FEL
 UNIT A, SECTION 21
 T32N, R11W, N.M.P.M.
 SAN JUAN COUNTY, NEW MEXICO

ROW APPLICATION
 ROW NEEDED FOR 2640' OF
 EXISTING ROAD ON BLM LAND.
 ROW EXISTS FOR CR 2300.