

UNITED STATES
DEPARTMENT OF THE INTERIOR
BUREAU OF LAND MANAGEMENT

APPLICATION FOR PERMIT TO DRILL, DEEPEN, OR PLUG BACK

1a. TYPE OF WORK

DRILL ☒

DEEPEN ☐

PLUG BACK ☐

b. TYPE OF WELL

OIL
WELL ☐

GAS
WELL ☒

OTHER

SINGLE
ZONE ☒

MULTIPLE
ZONE ☐

2. NAME OF OPERATOR

NORTHWEST PIPELINE CORP

3. ADDRESS OF OPERATOR

3539 EAST 30TH ST. FARMINGTON, NM 87401

4. LOCATION OF WELL (Report location clearly and in accordance with any State requirements.)

At surface 1568 FSL UNIT L
1237 FWL
At proposed prod. zone SAME

14. DISTANCE IN MILES AND DIRECTION FROM NEAREST TOWN OR POST OFFICE*

APPROXIMATELY 7 MILES NW OF CEDAR HILL, NEW MEXICO

15. DISTANCE FROM PROPOSED*

16. NO. OF ACRES IN LEASE

LOCATION TO NEAREST
PROPERTY OR LEASE LINE, FT.
(Also to nearest drilg. unit line, if any)

1084

1384.60

18. DISTANCE FROM PROPOSED LOCATION*
TO NEAREST WELL, DRILLING, COMPLETED,
OR APPLIED FOR, ON THIS LEASE, FT.

±174'

3210

17. NO. OF ACRES ASSIGNED
TO THIS WELL

N/376.40
ALL OF SECTION 9 - 386 ACRES

20. ROTARY OR CABLE TOOLS

ROTARY

22. APPROX. DATE WORK WILL START*

JUNE 15, 1990

21. ELEVATIONS (Show whether DF, RT, GR, etc.)

6541' BR

This action is subject to technical and
procedural review pursuant to 43 CFR 3105.3
and appeal pursuant to 43 CFR 3105.4.

PROPOSED CASING AND CEMENTING PROGRAM

	WEIGHT PER FOOT	SETTING DEPTH
12 1/4	36# K-55	200'
8 3/4	23# K-55	2940'
6 1/4	23# P-110	2840' to 3210'

DRILLING OPERATIONS AUTHORIZED ARE
SUBJECT TO COMPLIANCE WITH ATTACHED
QUANTITY OF CEMENT
"GENERAL REQUIREMENTS"

120 SX (193 cu ft)
405 SX (772 cu ft)
OPEN HOLE - NO CEMENT

1) PLAN TO DRILL FRUITLAND COAL FROM 2964' to 3204' and SET LINER IN
OPEN HOLE. IF OPEN HOLE PROVES UNPRODUCTIVE, THE 5 1/2" LINER WILL
CHANGED TO GRADE K-55 AND CEMENTED AND STIMULATED AS NECESSARY.

2) ALL OF SECTION 9 IS DEDICATED TO THIS WELL.

RECEIVED

JUN 18 1990

OIL CON. DIV
DIST. 3

IN ABOVE SPACE DESCRIBE PROPOSED PROGRAM: If proposal is to deepen or plug back, give data on present productive zone and proposed new productive zone. If proposal is to drill or deepen directionally, give pertinent data on subsurface locations and measured and true vertical depths. Give blowout preventer program, if any.

24.

SIGNED

Mark R. Carls

TITLE

PRODUCTION & DRILLING ENGINEER

DATE

4/20/90

(This space for Federal or State office use)

PERMIT NO.

APPROVAL DATE

APPROVED BY

TITLE

CONDITIONS OF APPROVAL, IF ANY:

APPROVED

DATE

JUN 13 1990

AREA MANAGER

*See Instructions On Reverse Side

Title 18 U.S.C. Section 1001, makes it a crime for any person knowingly and willfully to make to any department or agency of the United States any false, fictitious or fraudulent statements or representations as to any matter within its jurisdiction.

APR 19 1990

PRODUCTION AND DRILLING

State of New Mexico
Energy, Minerals and Natural Resources Department

OIL CONSERVATION DIVISION

P.O. Box 2088
Santa Fe, New Mexico 87504-2088Submit to Appropriate
District Office
State Lease - 4 copies
Fee Lease - 3 copiesDISTRICT I
P.O. Box 1980, Hobbs, NM 88240DISTRICT II
P.O. Drawer DD, Artesia, NM 88210DISTRICT III
1000 Rio Brazos Rd., Aztec, NM 87410

WELL LOCATION AND ACREAGE DEDICATION PLAT

All Distances must be from the outer boundaries of the section

Operator NORTHWEST PIPELINE CORP.		Lease COX CANYON UNIT		Well No. 200
Unit Letter L	Section 9	Township T.32 N.	Range R.11 W.	County SAN JUAN COUNTY
Actual Footage Location of Well: 1568 feet from the SOUTH line and 1237 feet from the WEST line				
Ground level Elev. 6541	Producing Formation FRUITLAND	Pool BASIN FRUITLAND COAL		Dedicated Acreage ALL 336.40 Acres

- Outline the acreage dedicated to the subject well by colored pencil or hatchure marks on the plat below.
- If more than one lease is dedicated to the well, outline each and identify the ownership thereof (both as to working interest and royalty).
- If more than one lease of different ownership is dedicated to the well, have the interest of all owners been consolidated by communitization, unitization, force-pooling, etc.?
☒ Yes ☐ No If answer is "yes" type of consolidation UNITIZED
If answer is "no" list the owners and tract descriptions which have actually been consolidated. (Use reverse side of this form if necessary.)
No allowable will be assigned to the well until all interests have been consolidated (by communitization, unitization, forced-pooling, or otherwise) or until a non-standard unit, eliminating such interest, has been approved by the Division.

OPERATOR CERTIFICATION

I hereby certify that the information contained herein is true and complete to the best of my knowledge and belief.

Signature

Printed Name

MARK MCCALLISTER

Position

PROD. & DRIG. ENGINEER

Company

NORTHWEST PIPELINE CORP.

Date

APRIL 18, 1990

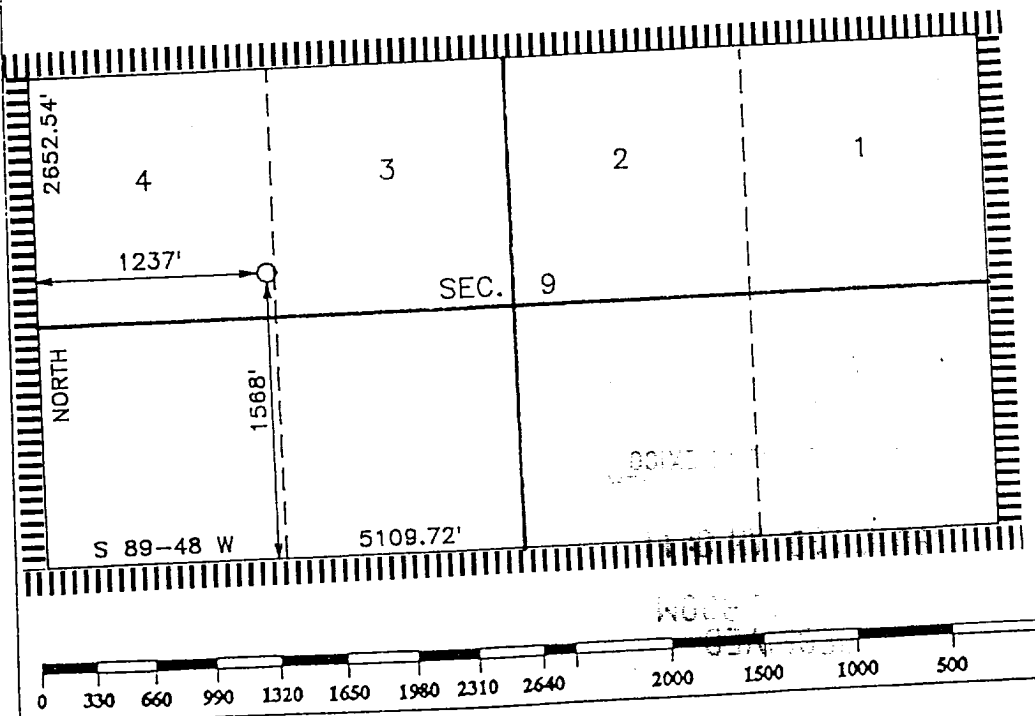
SURVEYOR CERTIFICATION

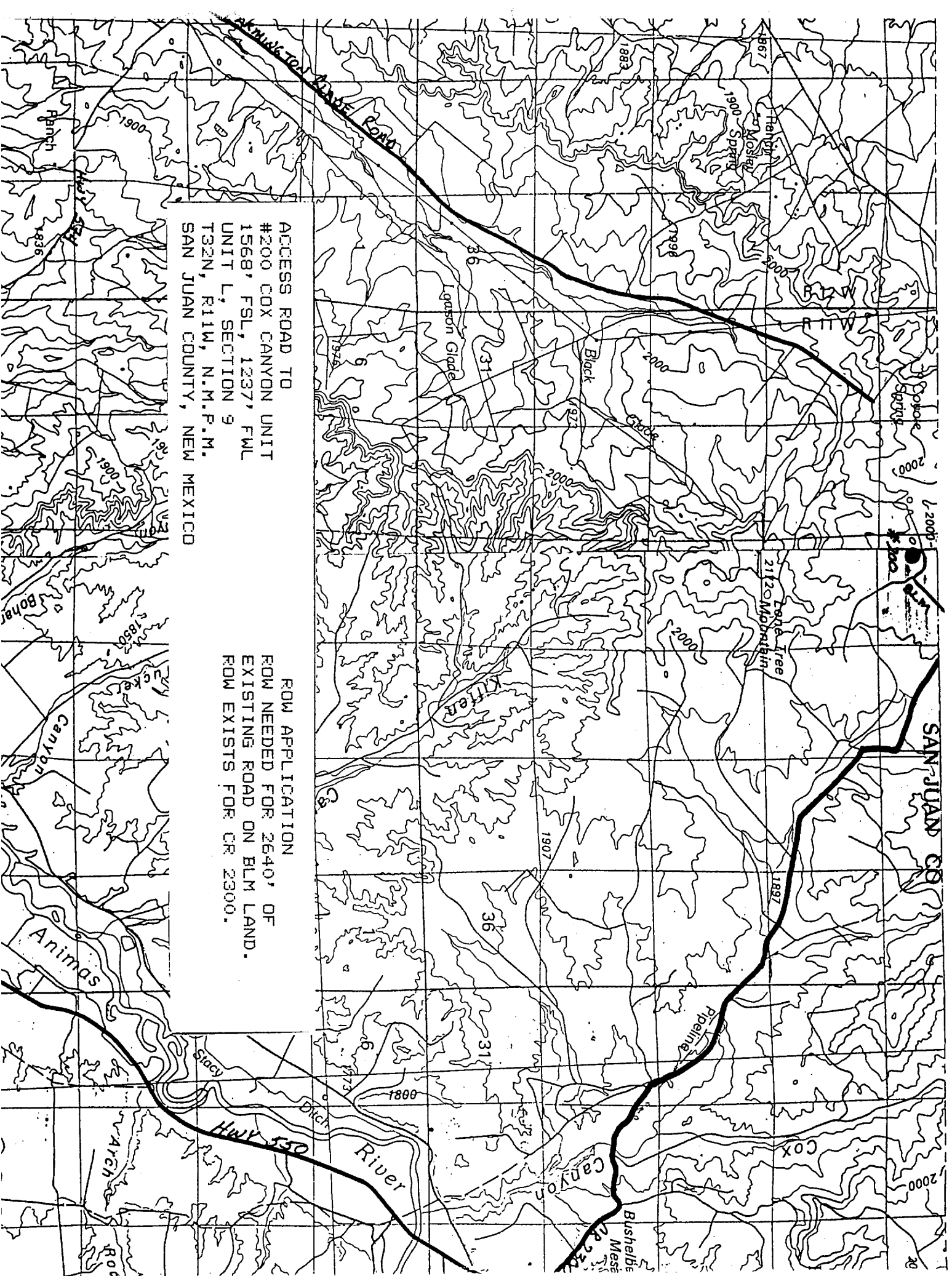
I hereby certify that the well location shown on this plat was plotted from field notes of actual surveys made by me or under my supervision, and that the same is true and correct to the best of my knowledge and belief.

Date Surveyed

Signature of Seal
Professional SurveyorR. EDWARD DAUGE
9679

Certificate No.

Registered Professional
Land Surveyor



ACCESS ROAD TO
#200 COX CANYON UNIT
1568' FSL, 1237' FWL
UNIT L, SECTION 9
T32N, R11W, N.M.P.M.
SAN JUAN COUNTY, NEW MEXICO

ROW APPLICATION
ROW NEEDED FOR 2640' OF
EXISTING ROAD ON BLM LAND.
ROW EXISTS FOR CR 2300.