

UNITED STATES  
DEPARTMENT OF THE INTERIOR  
BUREAU OF LAND MANAGEMENT

APPLICATION FOR PERMIT TO DRILL, DEEPEN, OR PLUG BACK

1a. TYPE OF WORK

DRILL ☒

DEEPEN ☐

PLUG BACK ☐

b. TYPE OF WELL

OIL  
WELL ☐

GAS  
WELL ☒

OTHER

SINGLE  
ZONE ☒

MULTIPLE  
ZONE ☐

2. NAME OF OPERATOR

Koch Exploration Company

3. ADDRESS OF OPERATOR

3605 N.dustin, Farmington, New Mexico 87401

4. LOCATION OF WELL (Report location clearly and in accordance with any State requirements.)\*

At surface

1115' FNL. & 1130' FEL.

At proposed prod. zone

Letter-A

14. DISTANCE IN MILES AND DIRECTION FROM NEAREST TOWN OR POST OFFICE\*

10 Miles NE. of Aztec, New Mexico

15. DISTANCE FROM PROPOSED\*

LOCATION TO NEAREST  
PROPERTY OR LEASE LINE, FT.  
(Also to nearest drlg. unit line, if any) 1115'

18. DISTANCE FROM PROPOSED LOCATION\*  
TO NEAREST WELL, DRILLING, COMPLETED,  
OR APPLIED FOR, ON THIS LEASE, FT.

100'

16. NO. OF ACRES IN LEASE

320 402 310

19. PROPOSED DEPTH

3350' + OR -

17. NO. OF ACRES ASSIGNED  
TO THIS WELL

E 320 277.56

20. ROTARY OR CABLE TOOLS

Rotary

21. ELEVATIONS (Show whether DF, RT, GR, etc.)

GR. 6568'

22. APPROX. DATE WORK WILL START\*

When Approved

23. PROPOSED CASING AND CEMENTING PROGRAM

SIZE OF HOLE	SIZE OF CASING	WEIGHT PER FOOT	SETTING DEPTH
10-1/4"	8-5/8"	24#	200'
7-3/4"	5-1/2"	17#	3350'

DRILLING OPERATIONS AUTHORIZED ARE
SUBJECT QUANTITY OF CEMENT WITH ATTACHED
66.92 CU. FT. 100% Excess
8170 CU. FT. Circulate

- 1-Set new or tested 8-5/8" J-55-ST&C.CSG.@ 200'.Cement with enough cement to circulate to surface.WOC.12 HRS.Test CSG.to 1000 PSI.before drilling out from under the shoe.
- 2-Drill out with water and native mud to 2000',then mud up with benex type mud, drill through the Basin Fruitland Coal Zone.(3350'more or less.)Set 5-1/2"17# J-55-ST&C.CSG.Cement with enough cement to circulate into the surface pipe.
- 3-3000#Double pipe and blind ram BOP'S will be used.Pipe rams will be tested each tour,and the blind rams will be tested each trip.
- 4-Well Head Equipment Will Consist Of 3000 PSI.Screw Type Larkin Head.

IN ABOVE SPACE DESCRIBE PROPOSED PROGRAM: If proposal is to deepen or plug back, give data on present productive zone and proposed new productive zone. If proposal is to drill or deepen directionally, give pertinent data on subsurface locations and measured and true vertical depths. Give blowout preventer program, if any.

24.

SIGNED

Delvin B. Echard

TITLE Dist.Prod.Supt.

DATE 7-7-90

(This space for Federal or State use)

PERMIT NO.

APPROVAL DATE

APPROVED BY

JUL 9 1990

TITLE

CONDITIONS OF APPROVAL, IF ANY:

OIL CON. DIV.  
DIST. 3

NMOCD

AREA MANAGER

Submit to Appropriate  
District Office  
State Lease - 4 copies  
Fee Lease - 3 copies

State of New Mexico  
Energy, Minerals and Natural Resources Department

Form C-102  
Revised 1-1-89

OIL CONSERVATION DIVISION

P.O. Box 2088  
Santa Fe, New Mexico 87504-2088

RECEIVED

MAY 10 1990

DISTRICT I  
P.O. Box 1980, Hobbs, NM 88240

DISTRICT II  
P.O. Drawer DD, Artesia, NM 88210

DISTRICT III  
1000 Rio Brazos Rd., Aztec, NM 87410

WELL LOCATION AND ACREAGE DEDICATION PLAT

All Distances must be from the outer boundaries of the section

BUREAU OF LAND MANAGEMENT  
FARMINGTON, NEW MEXICO

Operator Koch Exploration Company			Lease Walker C		Well No. 528
Unit Letter A	Section 13	Township 31 North	Range 10 West	County NMPM San Juan	

Actual Footage Location of Well:

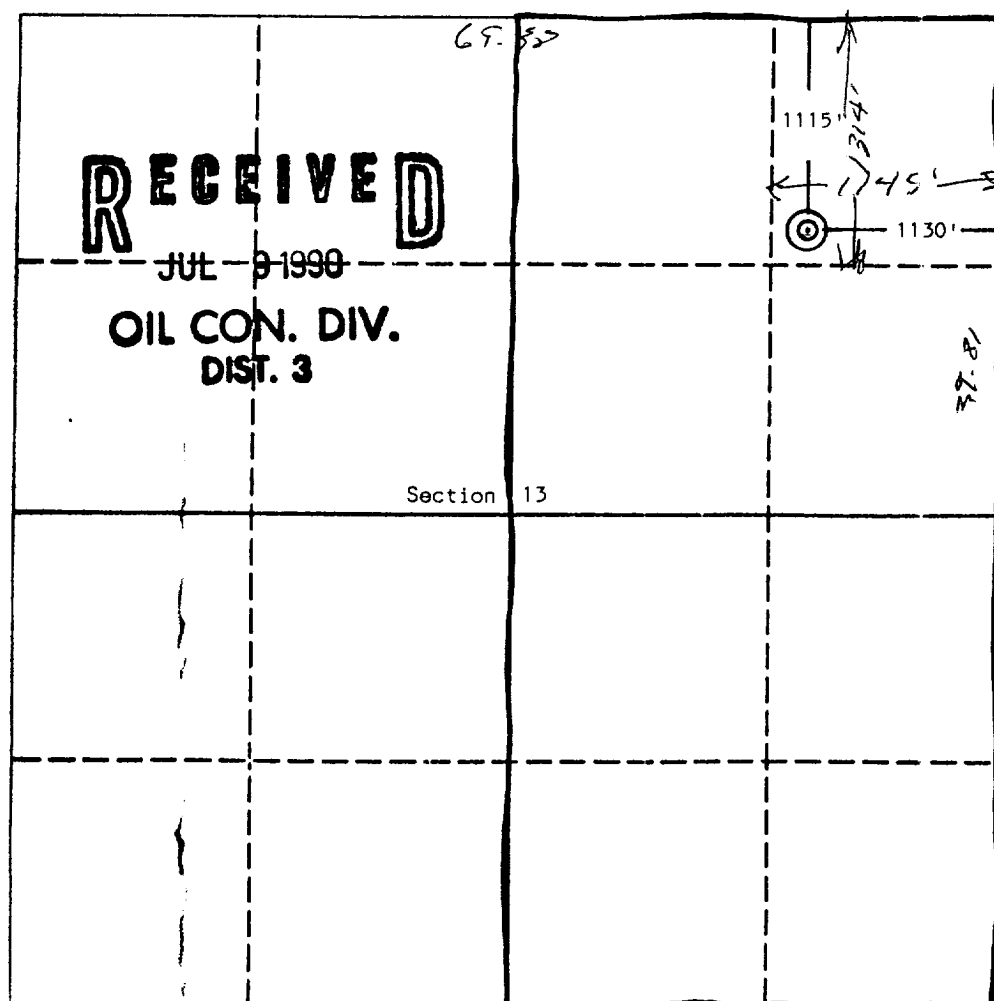
1115 feet from the North line and 1130 feet from the East line

Ground level Elev. 6568	Producing Formation Basin Fruitland Coal	Pool Basin Fruitland Coal	Dedicated Acreage: 320 277.56 Acres
----------------------------	---	------------------------------	--

1. Outline the acreage dedicated to the subject well by colored pencil or hatchure marks on the plat below.
2. If more than one lease is dedicated to the well, outline each and identify the ownership thereof (both as to working interest and royalty).
3. If more than one lease of different ownership is dedicated to the well, have the interest of all owners been consolidated by communitization, unitization, force-pooling, etc.?  
☐ Yes ☐ No If answer is "yes" type of consolidation \_\_\_\_\_

If answer is "no" list the owners and tract descriptions which have actually been consolidated. (Use reverse side of this form if necessary.)

No allowable will be assigned to the well until all interests have been consolidated (by communitization, unitization, forced-pooling, or otherwise) or until a non-standard unit, eliminating such interest, has been approved by the Division.



OPERATOR CERTIFICATION

I hereby certify that the information contained herein is true and complete to the best of my knowledge and belief.

Signature  
*Delvin H. Echard*  
Printed Name  
Delvin H. Echard  
Position  
Dist. Prod. Supt.  
Company  
Koch Exploration CO.  
Date  
3-7-90

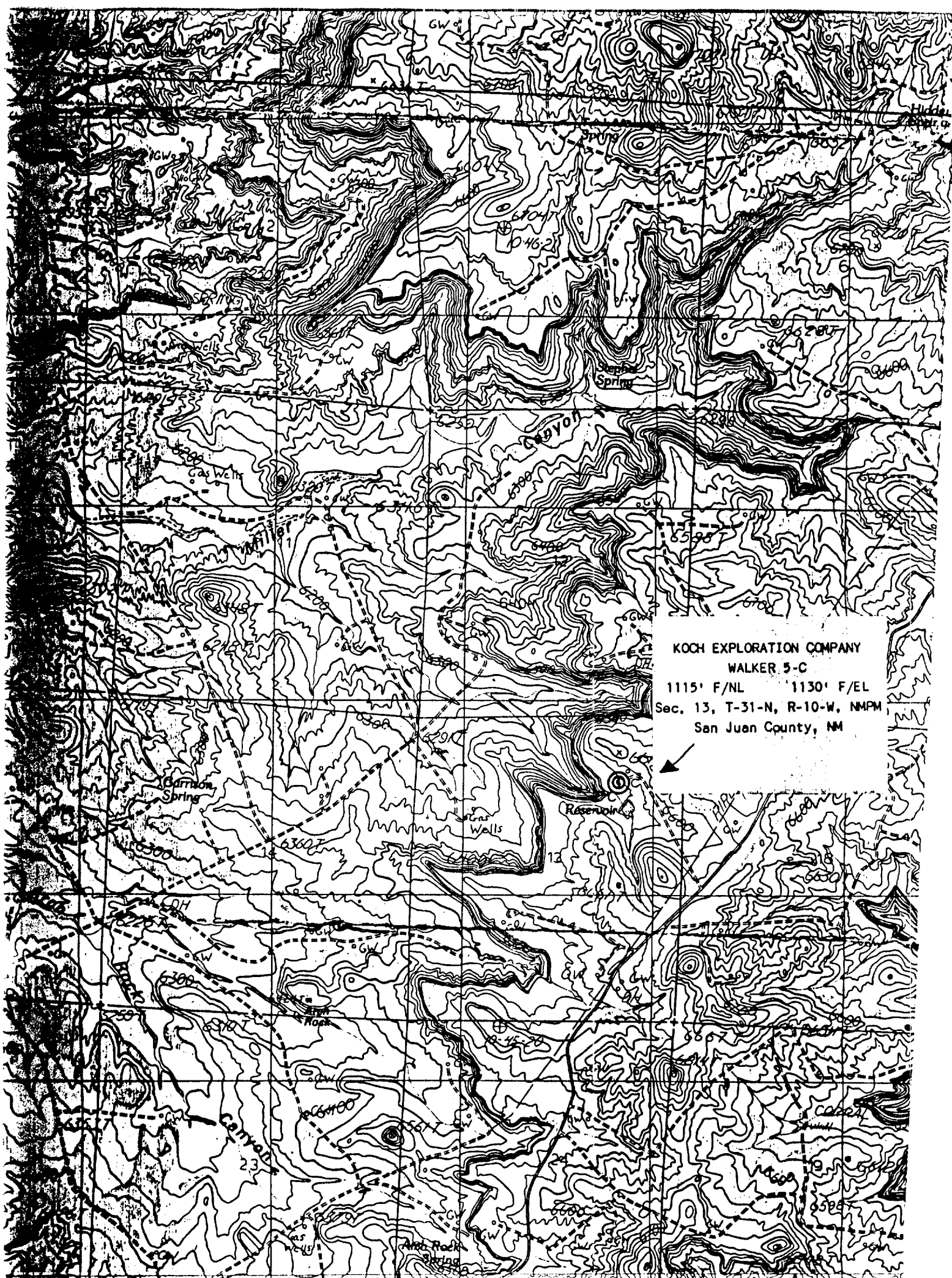
SURVEYOR CERTIFICATION

I hereby certify that the well location shown on this plat was plotted from field notes of actual surveys made by me or under my supervision, and that the same is true and correct to the best of my knowledge and belief.

Date Surveyed  
February 21, 1990

Signature & Seal of  
Professional Surveyor  
*Edgar L. Risenhoover*  
Certificate No. 5979  
Edgar L. Risenhoover, P.S.





KOCH EXPLORATION COMPANY  
WALKER 5-C  
1115' F/NL    1130' F/EL  
Sec. 13, T-31-N, R-10-W, NMPM  
San Juan County, NM

