

UNITED STATES
DEPARTMENT OF THE INTERIOR
BUREAU OF LAND MANAGEMENT

20-045-28560

APPLICATION FOR PERMIT TO DRILL, DEEPEN, OR PLUG BACK

1A. TYPE OF WORK

DRILL ☒

DEEPEN ☐

PLUG BACK ☐

B. TYPE OF WELL

OIL
WELL ☐

GAS
WELL ☒

OTHER

SINGLE
ZONE ☒

MULTIPLE
ZONE ☐

2. NAME OF OPERATOR

CNG Producing Company

3. ADDRESS OF OPERATOR

Crosswind Corporate Park, Route 2, Box 698, Bridgeport,
WV 26330

4. LOCATION OF WELL (Report location clearly and in accordance with any State requirements.)*

At surface
634 507'
At proposed prod. zone
- FSL FWL

14. DISTANCE IN MILES AND DIRECTION FROM NEAREST TOWN OR POST OFFICE*

26 miles NE of Aztec, New Mexico

15. DISTANCE FROM PROPOSED*

LOCATION TO NEAREST
PROPERTY OR LEASE LINE, FT.
(Also to nearest drig. unit line, if any) 890'

16. NO. OF ACRES IN LEASE

1131'

17. NO. OF ACRES ASSIGNED

TO THIS WELL

5/310 49

18. DISTANCE FROM PROPOSED LOCATION*

TO NEAREST WELL, DRILLING, COMPLETED,
OR APPLIED FOR, ON THIS LEASE, FT. 2850'

19. PROPOSED DEPTH

3571'

20. ROTARY OR CABLE TOOLS

Rotary

21. ELEVATIONS (Show whether DF, RT, GR, etc.)

2930 6000 GR

This action is subject to technical and
procedural review pursuant to 42 CFR 31.155.

22. APPROX. DATE WORK WILL START*

July 1, 1990

23. PROPOSED CASING AND CEMENTING PROGRAM

DRILLING OPERATIONS AUTHORIZED ARE
SUBJECT TO COMPLIANCE WITH ATTACHED

SIZE OF HOLE	SIZE OF CASING	WEIGHT PER FOOT	SETTING DEPTH	DISBURSEMENT
12 1/4"	9 5/8"	36#	300'	236 cuft/ circulate to surface
8 3/4"	7"	23#	3265'	890 cuft/ circulate to surface
6 1/4"	5 1/2 "	17#	3151 - 3571'	39 cuft/ circulate to top of liner

Drill 12 1/4" hole to + 300'. Run surface casing cement to surface. WOC 12 hours. Pressure test to 600 psi/30 mins. Drill @ 8 3/4" hole to 3265' with fresh water mud. No poisonous gases or abnormal pressures are anticipated. Run intermediate casing and cement to surface WOC 12 hours. Pressure test to 1500 psi/30 minutes. Drill a 6 1/4" hole to T.D. using air or air/water combination. Run a mud logging unit while drilling this interval, run the production liner. The liner will be cemented if the wells natural flow capacity indicates the need for further stimulation.

RECEIVED
JUL 08 1991

RECEIVED
JUN 19 1991

OIL CON. DIV
DIST. 3

OIL CON. DIV
DIST. 3

IN ABOVE SPACE DESCRIBE PROPOSED PROGRAM. If proposal is to deepen or plug back, give data on present productive zone and proposed new productive zone. If proposal is to drill or deepen directly, give pertinent data on subsurface locations and measured and true vertical depths. Give blowout preventer program, if any.

24.

SIGNED W.B. Martin Jr.

TITLE Operator Representative

DATE 5/23/90

(This space for Federal or State office use)

PERMIT NO. _____

APPROVAL DATE _____

APPROVED BY _____
CONDITIONS OF APPROVAL, IF ANY:

TITLE _____

APPROVED
AS AMENDED

JUN 18 1991

Shane W. Spence
AREA MANAGER

*See Instructions On Reverse Side

Submit to Appropriate
District Office
State Lease - 4 copies
Fee Lease - 3 copies

DISTRICT I
P.O. Box 1980, Hobbs, NM 88240

DISTRICT II
P.O. Drawer DD, Artesia, NM 88210

DISTRICT III
1000 Rio Brazos Rd., Aztec, NM 87410

State of New Mexico
Energy, Minerals and Natural Resources Department

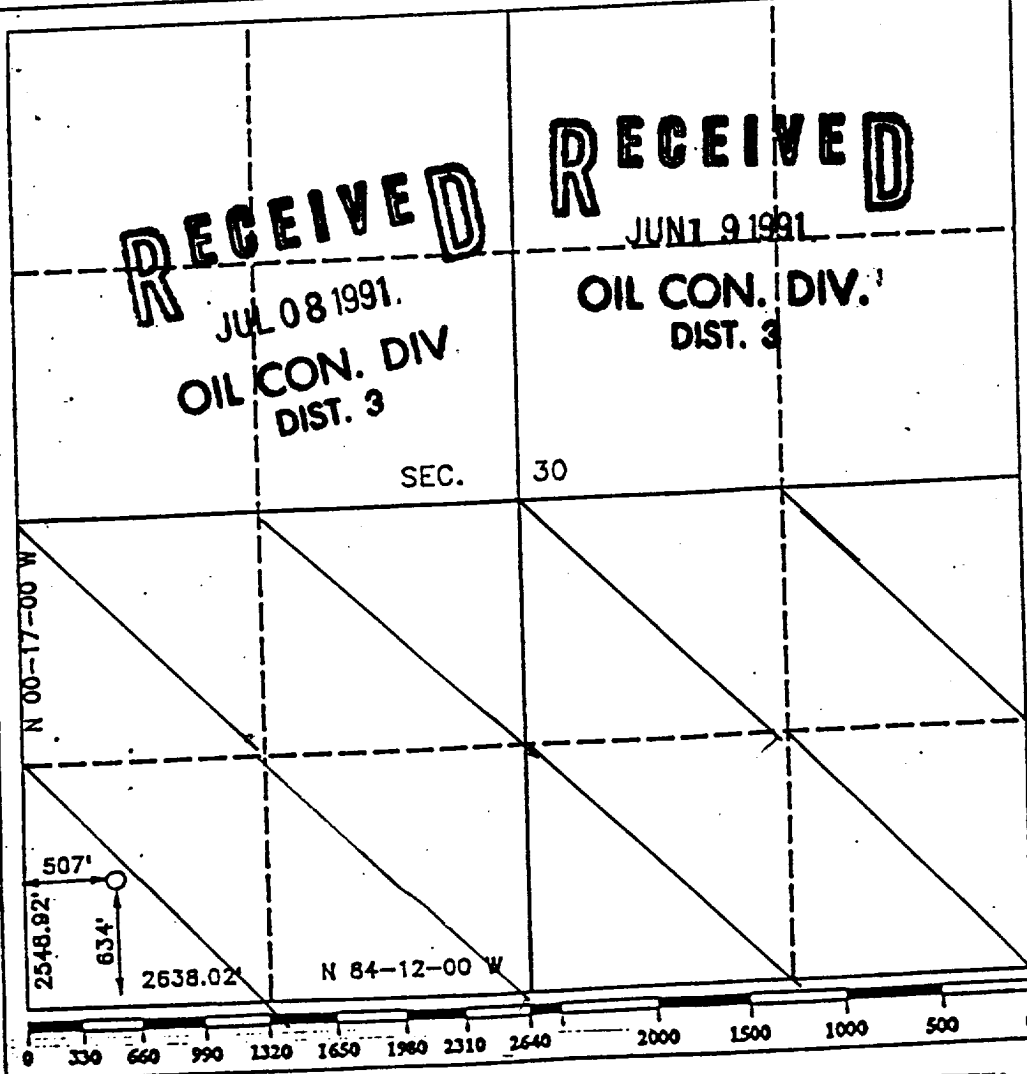
Form C-102
Revised 1-1-89

OIL CONSERVATION DIVISION
P.O. Box 2088
Santa Fe, New Mexico 87504-2088

WELL LOCATION AND ACREAGE DEDICATION PLAT
All Distances must be from the outer boundaries of the section

Operator C.N.G. DEVELOPMENT CO.			Lease GRASSY CANYON	Well No. 2
Unit Letter M	Section 30	Township T.32 N.	Range R.7 W.	County SAN JUAN COUNTY
Actual Footage Location of Well: 634 feet from the SOUTH line and 507 feet from the WEST line				
Ground level Elev. 6930		Producing Formation FRUITLAND FORMATION	Pool Basin Fruitland Coal	Dedicated Acreage: 310.49 Acres

- Outline the acreage dedicated to the subject well by colored pencil or hatchure marks on the plat below.
- If more than one lease is dedicated to the well, outline each and identify the ownership thereof (both as to working interest and royalty).
- If more than one lease of different ownership is dedicated to the well, have the interest of all owners been consolidated by communization, unitization, force-pooling, etc?
☐ Yes ☐ No If answer is "yes" type of consolidation _____
If answer is "no" list the owners and tract descriptions which have actually been consolidated. (Use reverse side of this form if necessary.)
No allowable will be assigned to the well until all interests have been consolidated (by communization, unitization, forced-pooling, or otherwise) or until a non-standard unit, eliminating such interest, has been approved by the Division.



OPERATOR CERTIFICATION
I hereby certify that the information contained herein is true and complete to the best of my knowledge and belief.

Signature
W.B. Martin Jr.
Printed Name
W.B. Martin Jr.
Position
Operators Representative
Company

Date
11/9/10

SURVEYOR CERTIFICATION
I hereby certify that the well location shown on this plat was plotted from field notes of actual surveys made by me or under my supervision, and that the same is true and correct to the best of my knowledge and belief.

Date Surveyed
SEPTEMBER 21, 1990
Signature & Seal of Professional Surveyor
R. HOWARD DUGGETT
R. Howard Duggett
Certificate No. **8670**
Registered Professional Land Surveyor

UNITED STATES
DEPARTMENT OF THE INTERIOR
BUREAU OF LAND MANAGEMENT

RECEIVED
BLM

FORM APPROVED
Budget Bureau No. 1004-0135
Expires: March 31, 1993

SUNDRY NOTICES AND REPORTS ON WELLS

Do not use this form for proposals to drill or to deepen or reentry to a different reservoir.
Use "APPLICATION FOR PERMIT—" for such proposals.

9 FEB 28 PM 1:15
016 FARMINGTON, N.M.

SUBMIT IN TRIPLICATE

1. Type of Well
☐ Oil Well ☒ Gas Well ☐ Other

2. Name of Operator

CNG Development Company

3. Address and Telephone No.

P.O. Box 15746 Pittsburg PA 15244 (412) 727-4109

4. Location of Well (Footage, Sec., T., R., M., or Survey Description)

634' FSL and 507' FWL Sec. 30 T. 32N. R. 7W.

5. Lease Designation and Serial No.

NM NM 83503

6. If Indian, Allottee or Tribe Name

7. If Unit or CA, Agreement Designation

8. Well Name and No.

Grassy Canyon #2

9. API Well No.

10. Field and Pool, or Exploratory Area

Basin Fruit and Coal

11. County or Parish, State

San Juan NM

12. CHECK APPROPRIATE BOX(S) TO INDICATE NATURE OF NOTICE, REPORT, OR OTHER DATA

TYPE OF SUBMISSION

- ☒ Notice of Intent
☐ Subsequent Report
☐ Final Abandonment Notice

TYPE OF ACTION

- ☐ Abandonment
☐ Recompletion
☐ Plugging Back
☐ Casing Repair
☐ Altering Casing
☐ Other Change Name & Operator
☐ Change of Plans
☐ New Construction
☐ Non-Routine Fracturing
☐ Water Shut-Off
☐ Conversion to Injection
☐ Dispose Water

(Note: Report results of multiple completion on Well Completion or Recompletion Report and Log form.)

13. Describe Proposed or Completed Operations (Clearly state all pertinent details, and give pertinent dates, including estimated date of starting any proposed work. If well is directionally drilled, give subsurface locations and measured and true vertical depths for all markers and zones pertinent to this work.)*

2/21/90 : Change operator from CNG Development to CNG Producing Company

Contact: Greg Seibert Drilling and Production Engineer

CNG Producing Company

Crosswind Corporate Park

Route 2, Box 698

Bridgeport, W.V. 26330

Phone (304) 623-8840

14. I hereby certify that the foregoing is true and correct

Signed

W.B. Matyja

Title

Operator Representative

Date

2/26/90

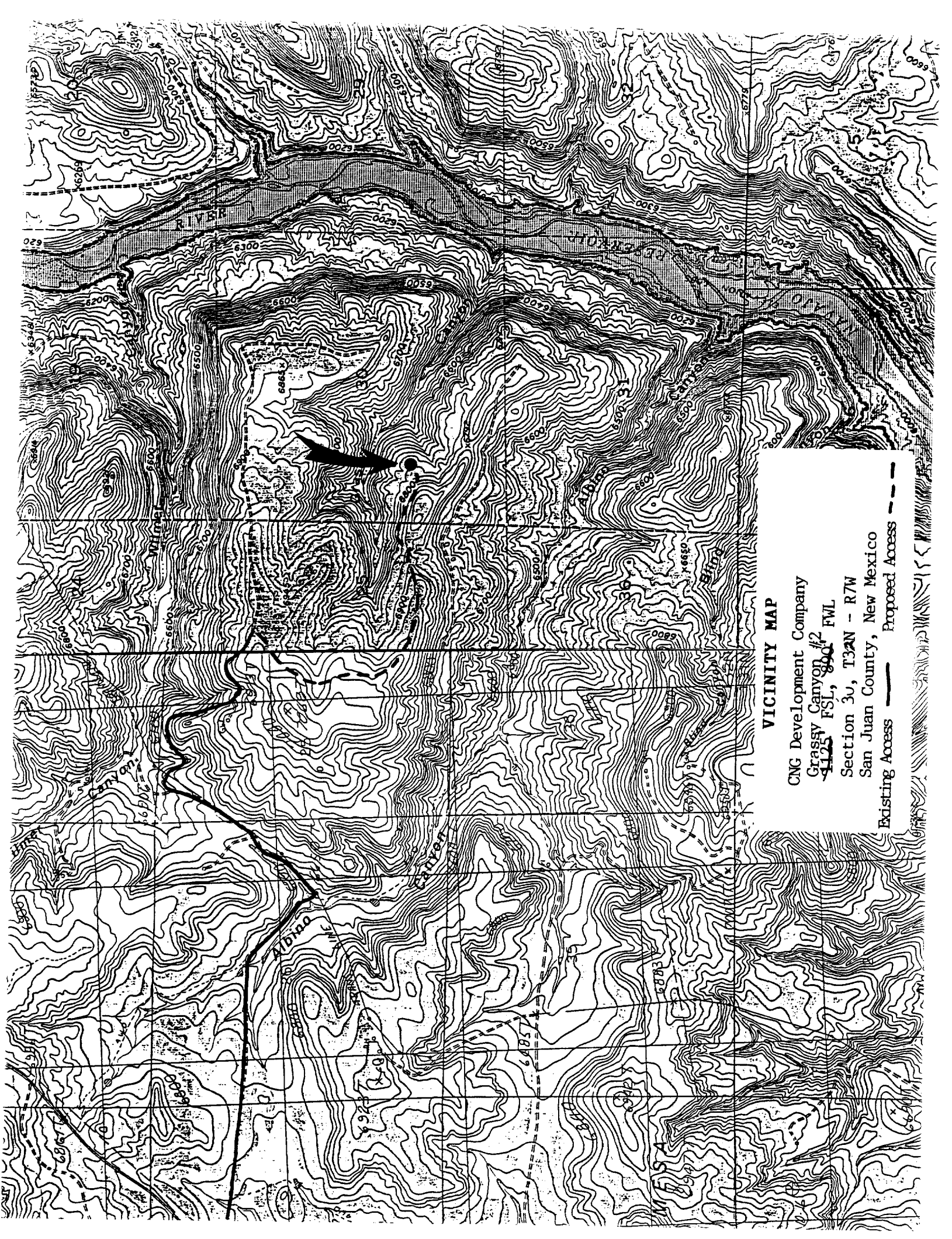
(This space for Federal or State office use)

Approved by

Conditions of approval, if any:

Title

Date



VICINITY MAP

CNG Development Company
Grassy Canyon #2
4125 FSL, 800⁺ FWL
Section 30, T32N - R7W
San Juan County, New Mexico
Existing Access — Proposed Access ---