

UNITED STATES
DEPARTMENT OF THE INTERIOR
BUREAU OF LAND MANAGEMENT

FORM APPROVED
Budget Bureau No. 1004-0135
Expires: March 31, 1993

SUNDRY NOTICES AND REPORTS ON WELLS

Do not use this form for proposals to drill or to deepen or reentry to a different reservoir.
Use "APPLICATION FOR PERMIT—" for such proposals

SUBMIT IN TRIPLICATE

1. Type of Well

☐ Oil Well ☒ Gas Well ☐ Other

2. Name of Operator

Amoco Production Company 778 Attn: Ed Hadlock

3. Address and Telephone No.

P.O. Box 800 Denver, Colorado 80201 (303) 830-4982

4. Location of Well (Footage, Sec., T., R., M., or Survey Description)

1450' FNL, 890' FEL
Sec. 31, T31N, R 9W UNIT "H" SE/NE

5. Lease Designation and Serial No.
SF-078316-F

6. If Indian, Allottee or Tribe Name

7. If Unit or CA, Agreement Designation

8. Well Name and No.

Walker Gas Com A #22

9. API Well No.

30-045-28615

10. Field and Pool, or Exploratory Area

Basin Fruitland Coal

11. County or Parish, State

San Juan N.M.

12. CHECK APPROPRIATE BOX(s) TO INDICATE NATURE OF NOTICE, REPORT, OR OTHER DATA

TYPE OF SUBMISSION

☒ Notice of Intent

☐ Subsequent Report

☐ Final Abandonment Notice

TYPE OF ACTION

☐ Abandonment

☐ Recompletion

☐ Plugging Back

☐ Casing Repair

☐ Altering Casing

☒ Other APD modif./ Name Change

☐ Change of Plans

☐ New Construction

☐ Non-Routine Fracturing

☐ Water Shut-Off

☐ Conversion to Injection

☐ Dispose Water

(Note: Report results of multiple completion on Well Completion or Recompletion Report and Log form.)

13. Describe Proposed or Completed Operations (Clearly state all pertinent details, and give pertinent dates, including estimated date of starting any proposed work. If well is directionally drilled, give subsurface locations and measured and true vertical depths for all markers and zones pertinent to this work.)

Amoco Production intends to drill and complete the subject well in the Pictured Cliffs formation. The original APD was filed for the Fruitland Coal. Please review the following attachments which include all modifications to the original APD:

- A. Pictured Cliffs Drilling Summary
- B. Drilling and Completion Program
- C. Pressure Control Equipment Summary
- D. Amoco Location Schematic

In addition, the well name will be changed to the Walker #2.

FROM WALKER GAS Com A #1

If there are any questions, please contact Ed Hadlock @ (303) 830-4982.

14. I hereby certify that the foregoing is true and correct

Signed

Ed Hadlock

Title

Admin. Analyst

(This space for Federal or State office use)

Approved by

Conditions of approval, if any:

Title

Date

APPROVED
AS AMENDED

NOV 13 1992

AREA MANAGER

Submit to Appropriate
District Office
State Lease - 4 copies
Fee Lease - 3 copies

State of New Mexico
Energy, Minerals and Natural Resources Department

Form C-102
Revised 1-1-89

OIL CONSERVATION DIVISION

P.O. Box 2088
Santa Fe, New Mexico 87504-2088

DISTRICT I
P.O. Box 1980, Hobbs, NM 88240

DISTRICT II
P.O. Drawer DD, Artesia, NM 88210

DISTRICT III
1000 Rio Brazos Rd., Aztec, NM 87410

WELL LOCATION AND ACREAGE DEDICATION PLAT

All Distances must be from the outer boundaries of the section

Operator <i>Amoco Production Company</i>			Lease <i>Walker</i>		Well No. <i>2</i>
Unit Letter <i>H</i>	Section <i>31</i>	Township <i>31 North</i>	Range <i>9 West</i>	County <i>SAN JUAN</i>	
Actual Footage Location of Well: <i>1450</i> feet from the <i>North</i> line and <i>890</i> feet from the <i>East</i> line					
Ground level Elev. <i>6619'</i>	Producing Formation <i>Pictured Cliffs</i>	Pool <i>Blanco Pictured Cliffs</i>	Dedicated Acreage: <i>NE 1/4</i> <i>160</i> Acres		

1. Outline the acreage dedicated to the subject well by colored pencil or hatchure marks on the plat below.

2. If more than one lease is dedicated to the well, outline each and identify the ownership thereof (both as to working interest and royalty).

3. If more than one lease of different ownership is dedicated to the well, have the interest of all owners been consolidated by communitization, unitization, force-pooling, etc.?

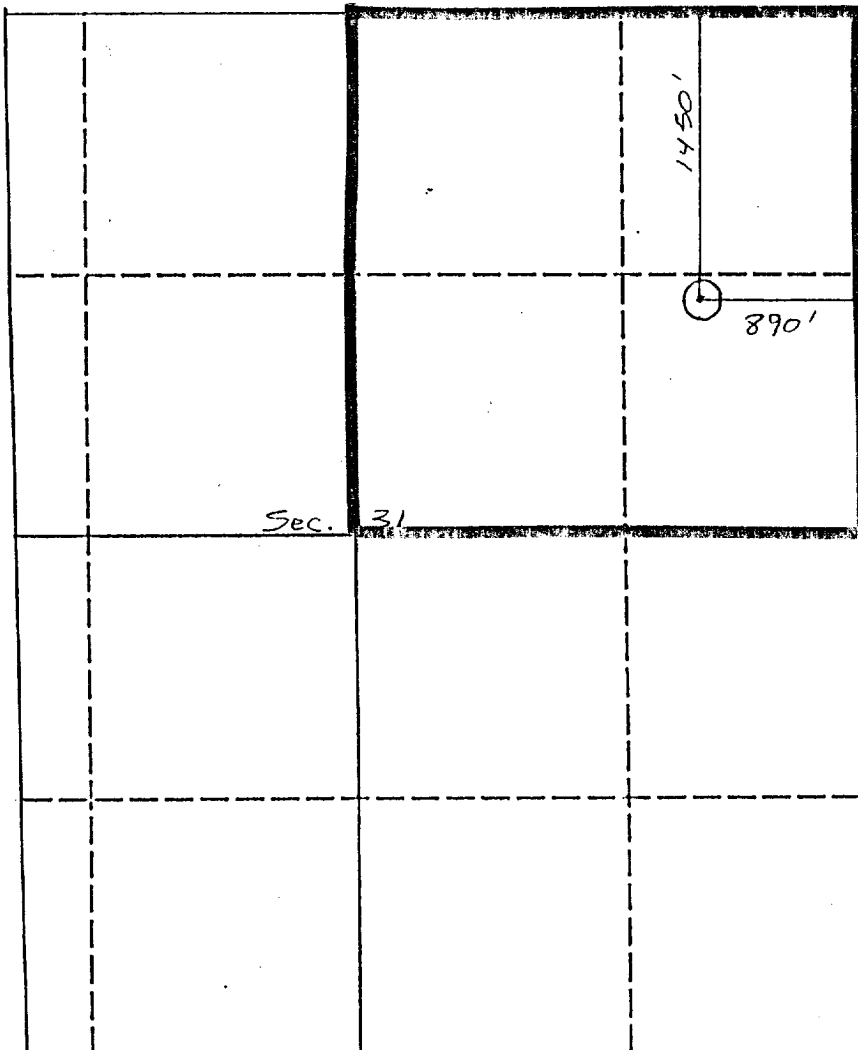
☐ Yes

☐ No

If answer is "yes" type of consolidation

If answer is "no" list the owners and tract descriptions which have actually been consolidated. (Use reverse side of this form if necessary.)

No allowable will be assigned to the well until all interests have been consolidated (by communitization, unitization, forced-pooling, or otherwise) or until a non-standard unit, eliminating such interest, has been approved by the Division.



OPERATOR CERTIFICATION

I hereby certify that the information contained herein is true and complete to the best of my knowledge and belief.

Signature

Ed Hadlock

Printed Name

Ed Hadlock

Position

Admin. Analyst

Company

Amoco Production Co.

Date

11/10/92

SURVEYOR CERTIFICATION

I hereby certify that the well location shown on this plat was plotted from field notes of actual surveys made by me or under my supervision, and that the same is true and correct to the best of my knowledge and belief.

Date Surveyed

Signature & Seal of
Professional Surveyor

ON File

Certificate No.

Amoco proposes to drill the well to further develop the Pictured Cliffs reservoir. The well will be drilled to the surface casing point using native mud. The well will then be drilled to the production casing point with a non-dispersed mud system. The attached modified 12" 3000 psi blowout preventer will be used. Amoco will complete the Pictured Cliffs with fracture stimulations.

SURFACE CASING

<u>Depth</u>	<u>Size</u>	<u>Weight</u>	<u>Description</u>	<u>Cement Program</u>
250'	8 5/8"	24#	K55 LT&C	200 cf Class B, 2% CaCL ₂ 15.6 ppg

PRODUCTION CASING

<u>Depth</u>	<u>Size</u>	<u>Weight</u>	<u>Description</u>	<u>Cement Program</u>
3518'	4 1/2"	11.6#	K55 LT&C	916 cf Class B, 65:35:5 10% salt, .25% dispersant 13.1 ppg 290 cf Class B, 2% CaCL ₂ 15.6 ppg

The well bore will be cemented in 2 stages, with the DV placed below the Ojo Alamo. The production string will be cemented from total depth to surface to protect formations. The Base of the Ojo Alamo (potential fresh water zone) is 2189'. The estimated top is 150 ft. above base. Hazards are not anticipated.

EVALUATION

Please see the attached drilling and completion program.

**AMOCO PRODUCTION COMPANY
DRILLING AND COMPLETION PROGRAM**

File: A:\WALK46.WK3
Date: 10/21/92

Lease: Walker
County: San Juan, New Mexico

Well No. 2
Location: 1450' FNL x 890' FEL, Sec. 31-31N-9W

Field: Ignacio Blanco PC

OBJECTIVE: Develop Pictured Cliff Reserves.

METHOD OF DRILLING		APPROXIMATE DEPTHS OF GEOLOGICAL MARKER		
TYPE OF TOOLS	DEPTH OF DRILLING	Actual GL: 6619' Estimate KB: 6631'		
Rotary	0 - TD	Marker	Depth	Elevation
LOG PROGRAM		Ojo Alamo	2189'	4442'
Type	Depth Interval	Fruitland	2980'	3651'
DIL/GR	BSC - TD	Lemon		
FDC/CNL/GR/CAL	(TD+MIN LOG INTERVAL)-TD	Ignacio		
MICROLOG	(TD+MIN LOG INTERVAL)-TD	Cottonwood		
		Cahn		
		Pictured Cliffs # *	3368'	3263'
REMARKS:		TOTAL DEPTH: 3518' 3113'		
Run FDC at slow speed, high sample rate thru bottom 1000' of hole. Bulk density presentation as per standard coal log format. Customer edit 9-track LIS tape to B. Pelzmann in Denver ASAP.		# Probable completion interval		
		* Possible pay.		
SPECIAL TESTS		DRILL CUTTING SAMPLES		DRILLING TIME
TYPE	DEPTH INTERVAL, ETC	FREQUENCY	DEPTH	FREQUENCY DEPTH
None		None		Geolograph 0 - TD
REMARKS:		Remarks:		
		Correct for actual elevation, if necessary. Drill 300' below PC top.		
MUD PROGRAM:				
Approx Interval	Type Mud	Weight, #/gal	Vis, sec/ci	W/L, cc's/30 min
0' - 250'	SPUD	8.5 - 9.0		
250' - TD	LSND	8.8 - 11.0	Sufficient to clean hole and maintain hole conditions for logs.	

REMARKS:

* Use minimum mud weight to control formation pressures.

CASING PROGRAM:

Casing String	Estimated Depth	Casing Size	Hole Size	Landing Point, Cement, Etc
Conductor				
Surface	250'	8-5/8"	12-1/4"	Cement to be circulated to surface.
Production	TD	4-1/2"	7-7/8"	Cement to be circulated to surface.

Remarks:

Southern Rockies Drilling Engineer to design cement programs. The 4 1/2" casing will be cemented in two stages with the DV set below the Ojo Alamo.

GENERAL REMARKS:

Southern Rockies Engineers to design completion program.

Form 46 Reviewed by:

Logging program reviewed by:

PREPARED BY:

B. Pelzmann/F. Seidel

Form 46 7-84bw

APPROVED:

J. R. Pantalano
For Production Dept

APPROVED:

For Exploration Dept

**SAN JUAN BASIN
PICTURED CLIFFS FORMATION
PRESSURE CONTROL EQUIPMENT**

Background

The objective Pictured Cliffs formation maximum surface pressure is anticipated to be 1400 PSI, based on completion testing. Pressure control equipment working pressure minimum requirements are therefore 2000 PSI. Equipment to be used will conform to API RP-53 (Figure 2.C.2) for a 2000 PSI system per Federal Onshore Order No. 2. Due to available conventional equipment within the area, 3000 PSI rated pressure control equipment will typically be utilized in a double ram type arrangement. Regional drilling rigs to be utilized have substructure height limitations which exclude use of annular preventers; therefore a rotating head will be installed above these rams. This pressure control equipment will be utilized for conventional drilling below surface to total depth in the Pictured Cliffs.

Equipment Specification

Interval

Below Surface Casing
to
Total Depth

BOP Equipment

12" nominal, 3000 PSI double ram
preventer with rotating head (see
Exhibit No. 1 - BOPE)

All ram type preventers and related control equipment will be hydraulically tested to 250 PSI (low pressure) and 2000 PSI (high pressure), upon installation, following any repairs or equipment replacements, or at 30 day intervals. Accessories to BOP equipment will include kelly cock, floor safety valves and choke manifold which will also be tested to equivalent pressure.

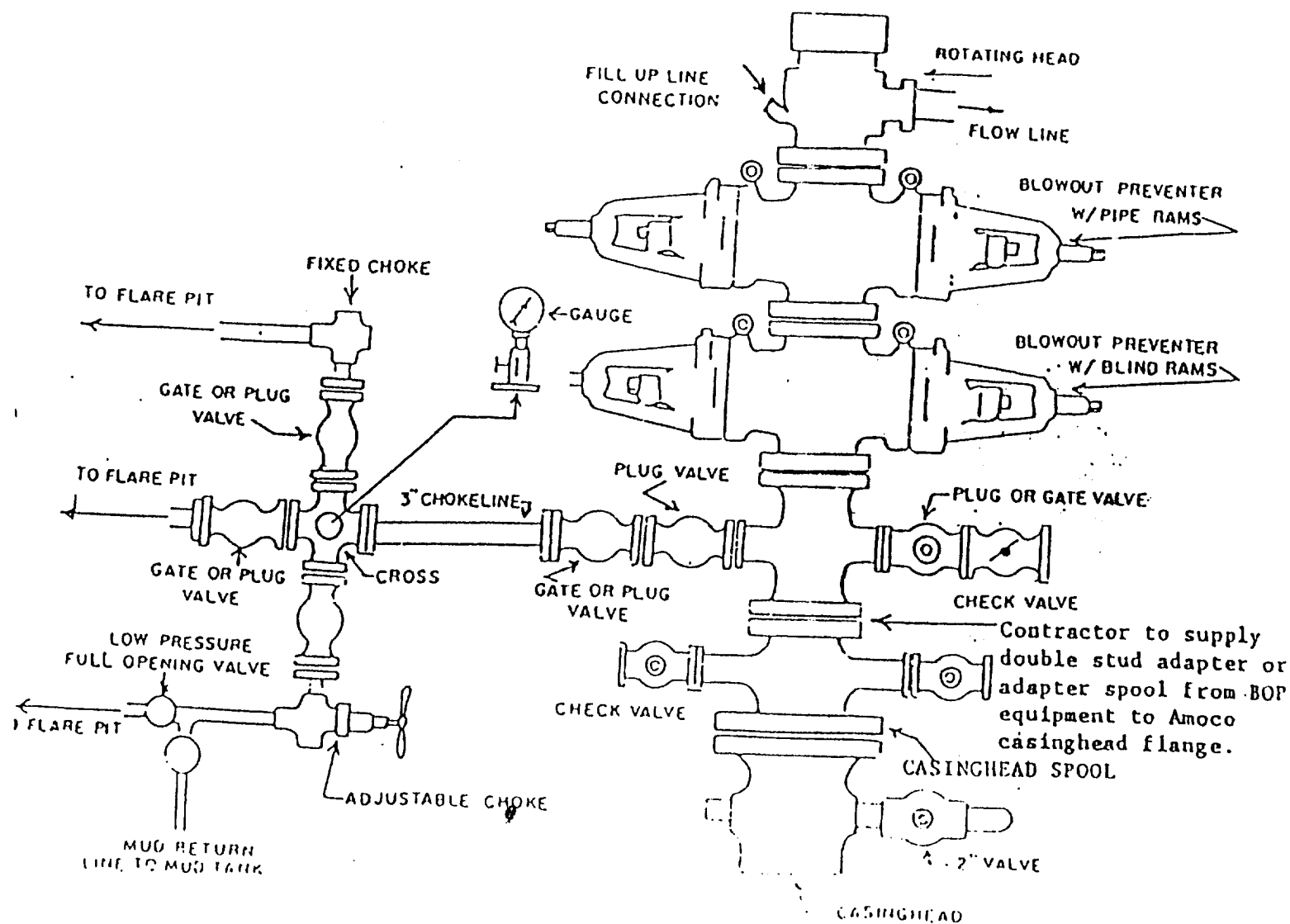
Please direct any questions to Frank Seidel at (303) 830-4832 in our Denver office.

I

FARMINGTON DISTRICT BLOWOUT PREVENTER REQUIREMENTS

Exhibit 1

1. Blowout Preventers and Master Valve to be fluid operated, and all fittings must be in good condition. Handwheels must be installed prior to drilling out.
2. Equipment through which bit must pass shall be as large as the inside diameter of the casing that is being drilled through.
3. All fittings to be flanged, (except for flare line).
4. Full opening safety valve and inside BOP valve must be available on rig floor at all times with proper connection or sub for drill pipe and drill collars.
5. Run choke line as straight as possible. All sharp turns must be block teed or equipped with lead filled bull plugs.
6. Flare lines to be threaded 2 7/8" tubing which has been securely anchored. Flare pit to be 100' from wellbore.



BLOWOUT PREVENTER HOOKUP

API Series " 290

EXHIBIT D-4

FEBRUARY 1985

Operation of BOP by closing both pipe and blind rams will be tested each trip or, on long bit runs, pipe rams will be closed once each 24 hours.

AMOCO

LOCATION

EXHIBIT E

