

Submit to Appropriate
District Office
State Lease - 6 copies
Fee Lease - 5 copies

State of New Mexico
Energy, Minerals and Natural Resources Department

Form C-101
Revised 1-1-89

OIL CONSERVATION DIVISION

P.O. Box 2088
Santa Fe, New Mexico 87504-2088

DISTRICT I

P.O. Box 1980, Hobbs, NM 88240

DISTRICT II

P.O. Drawer DD, Artesia, NM 88210

DISTRICT III

1000 Rio Brazos Rd., Aztec, NM 87410

API NO. (assigned by OCD on New Wells)

30-045-28664

5. Indicate Type of Lease

STATE ☐

FEE ☒

6. State Oil & Gas Lease No.

APPLICATION FOR PERMIT TO DRILL, DEEPEN, OR PLUG BACK

1a. Type of Work:

DRILL ☒

RE-ENTER ☐

DEEPEN ☐

PLUG BACK ☐

b. Type of Well:

OIL
WELL ☐

GAS
WELL ☒

OTHER

SINGLE
ZONE ☒

MULTIPLE
ZONE ☐

7. Lease Name or Unit Agreement Name

San Juan 32-7 Unit

8. Well No.

223 (W/328.97)

2. Name of Operator

Phillips Petroleum Company

3. Address of Operator

5525 Hwy 64 NBU 3004, Farmington, N.M. 87401

9. Pool name or Wildcat

Basin Fruitland Coal

4. Well Location

Unit Letter B : 1365 Feet From The North Line and 1453 Feet From The East Line

Section 21 Township 32N Range 7W NMPM San Juan County

10. Proposed Depth
3210' GL

11. Formation
Fruitland

12. Rotary or C.T.
Rotary

13. Elevations (Show whether DF, RT, GR, etc.)
6490' (GL Unprepared)

14. Kind & Status Plug Bond
Blanket

15. Drilling Contractor
Advise Later

16. Approx. Date Work will start
Upon Approval

17.

PROPOSED CASING AND CEMENT PROGRAM

SIZE OF HOLE	SIZE OF CASING	WEIGHT PER FOOT	SETTING DEPTH	SACKS OF CEMENT	EST. TOP
12-1/4"	9-5/8"	36#, K-55	250'	250 Sxs	Circ to Surface
8-3/4"	7"	23#, K-55	3025'	650 Sxs	Circ to Surface
6-1/8"	5-1/2"	23#	2925'-3210'		*

*If the coal is clefted a 5-1/2", 23#, P-110 liner will be run in the open hole without being cemented.

APPROVAL EXPIRES 11-7-92
UNLESS DRILLING IS COMMENCED.
SPUD NOTICE MUST BE SUBMITTED
WITHIN 10 DAYS.

Use mud additives as required for control.

RECEIVED
MAY 07 1992
OIL CON. DIV.
DIST. 3

IN ABOVE SPACE DESCRIBE PROPOSED PROGRAM: IF PROPOSAL IS TO DEEPEN OR PLUG BACK, GIVE DATA ON PRESENT PRODUCTIVE ZONE AND PROPOSED NEW PRODUCTIVE ZONE. GIVE BLOWOUT PREVENTER PROGRAM, IF ANY.

I hereby certify that the information above is true and complete to the best of my knowledge and belief.

SIGNATURE L. E. Robinson TITLE Sr. Drlg. & Prod. Engr. DATE 5-4-92

TYPE OR PRINT NAME L. E. Robinson

(505)
TELEPHONE NO. 599-3412

(This space for State Use)

APPROVED BY [Signature] TITLE DEPUTY OIL & GAS INSPECTOR, DIST. #3 DATE MAY 07 1992

CONDITIONS OF APPROVAL, IF ANY:

OFFICE OF THE ATTORNEY GENERAL

1. *Chlorophyll a* and *Chlorophyll b* were determined by the method of Lichtenthaler and Whistler (1973). The total chlorophyll content was determined by the method of Arar and Cook (1980). The carotenoid content was determined by the method of Lichtenthaler and Whistler (1973). The total carotenoid content was determined by the method of Arar and Cook (1980). The total protein content was determined by the method of Lowry et al. (1951). The total lipid content was determined by the method of Bligh and Dyer (1959). The total carbohydrate content was determined by the method of Dubois and Gilles (1950). The total nucleic acid content was determined by the method of Burton (1956). The total ash content was determined by the method of AOAC (1990). The total moisture content was determined by the method of AOAC (1990). The total dry matter content was determined by the method of AOAC (1990). The total organic acid content was determined by the method of AOAC (1990). The total alkaloid content was determined by the method of AOAC (1990). The total saponin content was determined by the method of AOAC (1990). The total tannin content was determined by the method of AOAC (1990). The total flavonoid content was determined by the method of AOAC (1990). The total phenol content was determined by the method of AOAC (1990). The total terpenoid content was determined by the method of AOAC (1990). The total steroid content was determined by the method of AOAC (1990). The total glycoside content was determined by the method of AOAC (1990). The total alkaloid content was determined by the method of AOAC (1990). The total saponin content was determined by the method of AOAC (1990). The total tannin content was determined by the method of AOAC (1990). The total flavonoid content was determined by the method of AOAC (1990). The total phenol content was determined by the method of AOAC (1990). The total terpenoid content was determined by the method of AOAC (1990). The total steroid content was determined by the method of AOAC (1990). The total glycoside content was determined by the method of AOAC (1990).

Submit to Appropriate
District Office
State Lease - 4 copies
Fee Lease - 3 copies

State of New Mexico
Energy, Minerals and Natural Resources Department

Form C-102
Revised 1-1-89

OIL CONSERVATION DIVISION

P.O. Box 2088
Santa Fe, New Mexico 87504-2088

DISTRICT I
P.O. Box 1980, Hobbs, NM 88240

DISTRICT II
P.O. Drawer DD, Artesia, NM 88210

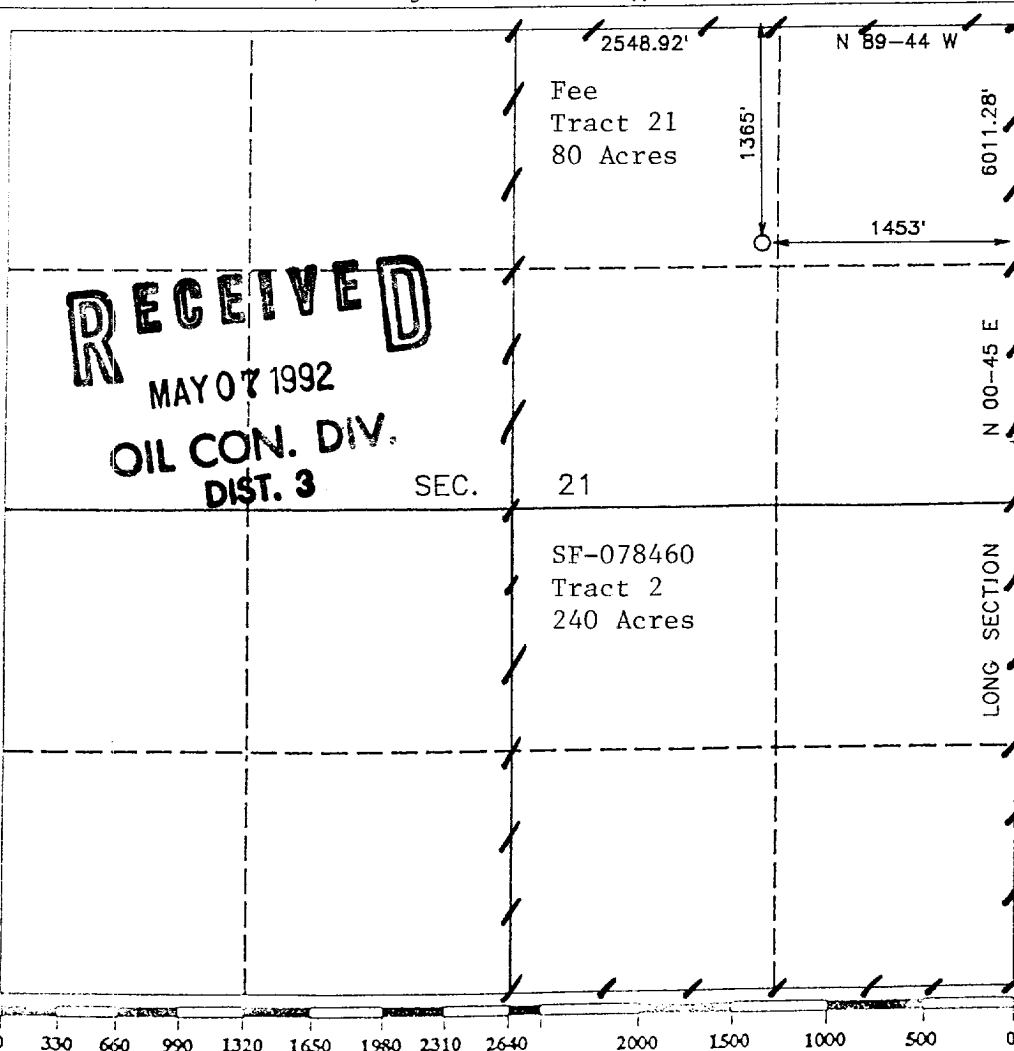
DISTRICT III
1000 Rio Brazos Rd., Aztec, NM 87410

WELL LOCATION AND ACREAGE DEDICATION PLAT

All Distances must be from the outer boundaries of the section

Operator PHILLIPS PETROLEUM		Lease SAN JUAN 32-7 UNIT		Well No. 223
Unit Letter B	Section 21	Township T.32 N.	Range R.7 W.	County SAN JUAN COUNTY
Actual Footage Location of Well: 1365 feet from the NORTH line and 1453 feet from the EAST line				
Ground level Elev. 6490	Producing Formation Fruitland	Pool Basin Fruitland Coal	Dedicated Acreage: 320 Acres	

- Outline the acreage dedicated to the subject well by colored pencil or hatchure marks on the plat below. **328.97**
- If more than one lease is dedicated to the well, outline each and identify the ownership thereof (both as to working interest and royalty).
- If more than one lease of different ownership is dedicated to the well, have the interest of all owners been consolidated by communization, unitization, force-pooling, etc.?
☐ Yes ☐ No If answer is "yes" type of consolidation _____
If answer is "no" list the owners and tract descriptions which have actually been consolidated. (Use reverse side of this form if necessary.)
No allowable will be assigned to the well until all interests have been consolidated (by communization, unitization, forced-pooling, or otherwise) or until a non-standard unit, eliminating such interest, has been approved by the Division.



OPERATOR CERTIFICATION

I hereby certify that the information contained herein is true and complete to the best of my knowledge and belief.

Signature
L. E. Robinson
Printed Name
L. E. Robinson
Position
Sr. Drlg. & Prod. Engr.
Company
Phillips Petroleum Company
Date
5-4-92

SURVEYOR CERTIFICATION

I hereby certify that the well location shown on this plat was plotted from field notes of actual surveys made by me or under my supervision, and that the same is true and correct to the best of my knowledge and belief.

Date Surveyed
JUNE 23, 1990
Signature & Seal of Professional Surveyor
R. Howard Daggett
Certification No.
9679
Registered Professional Land Surveyor