

UNITED STATES
DEPARTMENT OF THE INTERIOR
BUREAU OF LAND MANAGEMENT

30-045-29056

APPLICATION FOR PERMIT TO DRILL, DEEPEN, OR PLUG BACK

1a. TYPE OF WORK
 DRILL DEEPEN PLUG BACK

b. TYPE OF WELL
 OIL WELL GAS WELL OTHER SINGLE ZONE MULTIPLE ZONE

2. NAME OF OPERATOR
 Conoco Inc. 3073

3. ADDRESS OF OPERATOR
 10 Desta Drive, Midland TX 79705

4. LOCATION OF WELL (Report location clearly and in accordance with any State requirements.)*
 At surface
 1765' FNL - 870' FEL
 At proposed prod. zone

14. DISTANCE IN MILES AND DIRECTION FROM NEAREST TOWN OR POST OFFICE*
 Approximately 8 miles NW from Cedar Hill, NM

15. DISTANCE FROM PROPOSED*
 LOCATION TO NEAREST
 PROPERTY OR LEASE LINE, FT.
 (Also to nearest drig. unit line, if any)
 870' E

16. NO. OF ACRES IN LEASE
 983.65

17. NO. OF ACRES ASSIGNED
 TO THIS WELL
 160 Acres N/316.30

18. DISTANCE FROM PROPOSED LOCATION*
 TO NEAREST WELL, DRILLING, COMPLETED,
 OR APPLIED FOR, ON THIS LEASE, FT.
 50' - 75' ±

19. PROPOSED DEPTH
 6050'

20. ROTARY OR CABLE TOOL
 Rotary

21. ELEVATIONS (Show whether DF, RT, GR, etc.)
 6647' GR

22. APPROX. DATE WORK WILL START*
 September 15, 1993

23. PROPOSED CASING AND CEMENTING PROGRAM

SIZE OF HOLE	SIZE OF CASING	WEIGHT PER FOOT	SETTING DEPTH	QUANTITY OF CEMENT
12-1/4"	9-5/8"	36#, K-55, ST&C	200'	90 Sxs
8-3/4"	7"	26#, K-55, LT&C	3600'	325 Sxs
6-1/8"	4-1/2"	10.5#, K-55, LT&C	6050'	175 Sxs

It is proposed to drill as a vertical hole to 6050' and complete as a Mesa Verde Gas Well.

See Attachments:

1. C-102
2. Topo map with Production and Lease Roads
3. Diagram of producing wells within 1 mile radius
4. Surface Use Program
5. Proposed Well Outline Program
6. Casing, Cementing, and Mud Program
7. BOP specs.
8. Production Facilities Layout
9. Well Site Layout
10. Cut and Fill Diagram

SEE ATTACHED FOR
CONDITIONS OF APPROVAL

RECEIVED
 OIL CON. DIV.
 DIST. 3
 JAN 10 1994
 RECEIVED
 DIST. 3

IN ABOVE SPACE DESCRIBE PROPOSED PROGRAM: If proposal is to deepen or plug back, give data on present productive zone and proposed new productive zone. If proposal is to drill or deepen directionally, give pertinent data on subsurface locations and measured and true vertical depth. Give blowout preventer program, if any.

24. SIGNED Jerry W. House TITLE Sr. Conservation Coordinator DATE 8/4/93

(This space for Federal or State office use)

PERMIT NO. _____ APPROVAL DATE _____

APPROVED
AS AMENDED

APPROVED BY _____ TITLE NMOOD DATE SEP 22 1993

CONDITIONS OF APPROVAL, IF ANY:

Jerry W. House
DISTRICT MANAGER

34647
Hold C-104 for 320 Plat *See Instructions On Reverse Side

Submit to Appropriate District Office
State Lease - 4 copies
Fee Lease - 3 copies

State of New Mexico
Energy, Minerals and Natural Resources Department

Form C-102
Revised 1-1-89

OIL CONSERVATION DIVISION
P.O. Box 2088
Santa Fe, New Mexico 87504-2088

DISTRICT I
P.O. Box 1980, Hobbs, NM 88240

DISTRICT II
P.O. Drawer DD, Artesia, NM 88210

DISTRICT III
1000 Rio Brazos Rd., Aztec, NM 87410

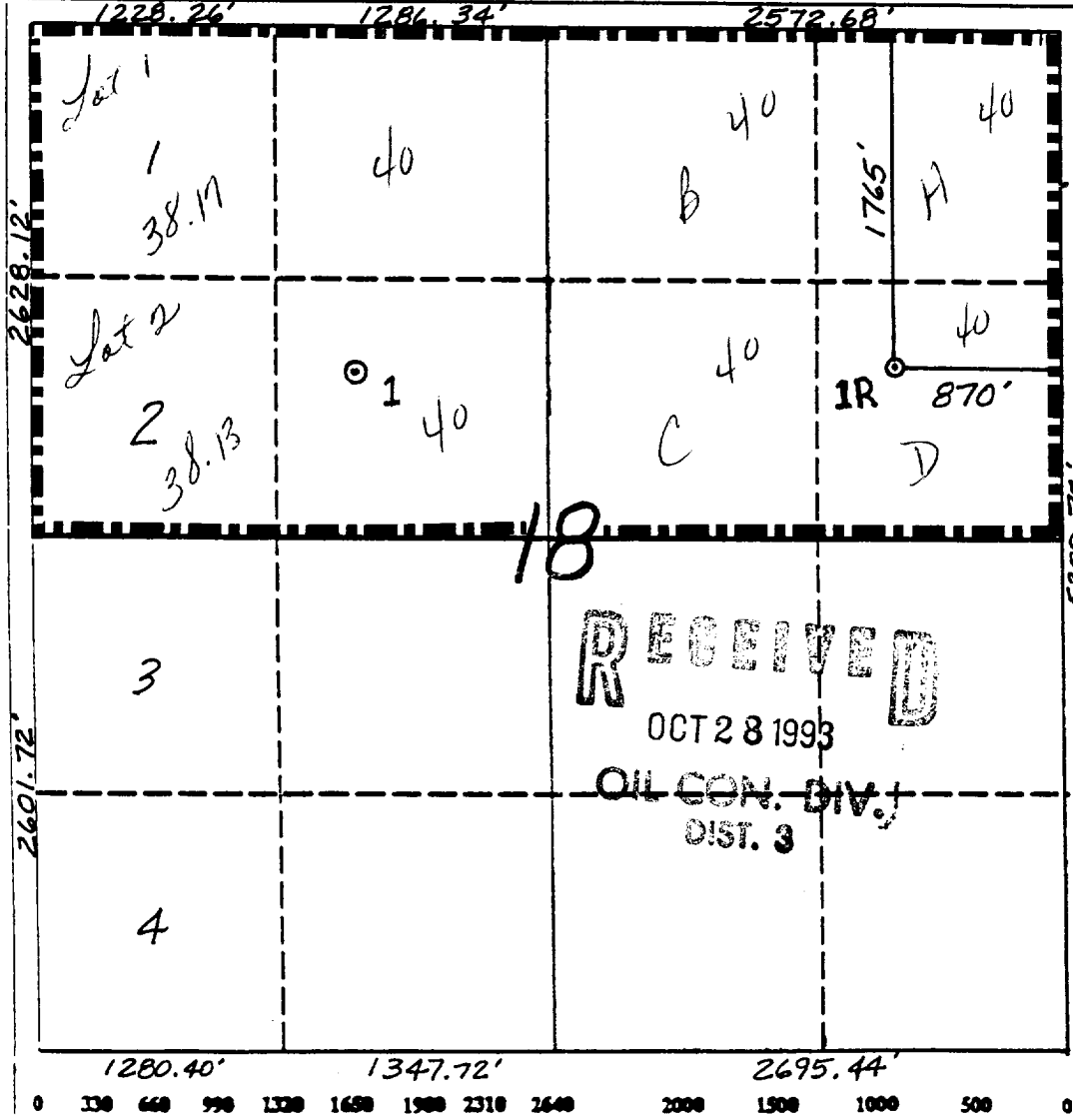
WELL LOCATION AND ACREAGE DEDICATION PLAT
All Distances must be from the outer boundaries of the section

Operator Conoco Inc.			Lease Johns Federal			Well No. 1R		
U.S. Letter H	Section 18	Township 32 North	Range 11 West	County NMEN	San Juan			

Actual Footage Location of Well:
1765 feet from the North line and 870 feet from the East line

Ground level Elev. 6637'	Producing Formation Mesaverde	Pool Blanco Mesaverde	Dedicated Acreage: N/320 316/320 Acres
-----------------------------	----------------------------------	--------------------------	---

- Outline the acreage dedicated to the subject well by colored pencil or highlight marks on the plat below.
 - If more than one lease is dedicated to the well, outline each and identify the ownership thereof (both as to working interest and royalty).
 - If more than one lease of different ownership is dedicated to the well, have the interest of all owners been consolidated by communitization, unitization, force-pooling, etc.?
 - Yes No If answer is "yes" type of consolidation _____
- If answer is "no" list the owners and tract descriptions which have actually been consolidated. (Use reverse side of this form if necessary.)
No allowable will be assigned to the well until all interests have been consolidated (by communitization, unitization, forced-pooling, or otherwise) or until a non-standard unit, eliminating such interest, has been approved by the Division.



OPERATOR CERTIFICATION
I hereby certify that the information contained herein is true and complete to the best of my knowledge and belief.

Signature: *Jerry W. Hoover*
Printed Name: Jerry W. Hoover
Position: Sr. Conservation Coordinator
Company: Conoco Inc.
Date: 8/4/93

SURVEYOR CERTIFICATION
I hereby certify that the well location shown on this plat was plotted from field notes of actual surveys made by me or under my supervision, and that the same is true and correct to the best of my knowledge and belief.

Date Surveyed: 7-12-93
Name: G. EDWARDS
Signature: *G. Edwards*
Professional Surveyor
6857
Certificate No. 6857

RECEIVED
OCT 28 1993
OIL CON. DIV.
DIST. 3

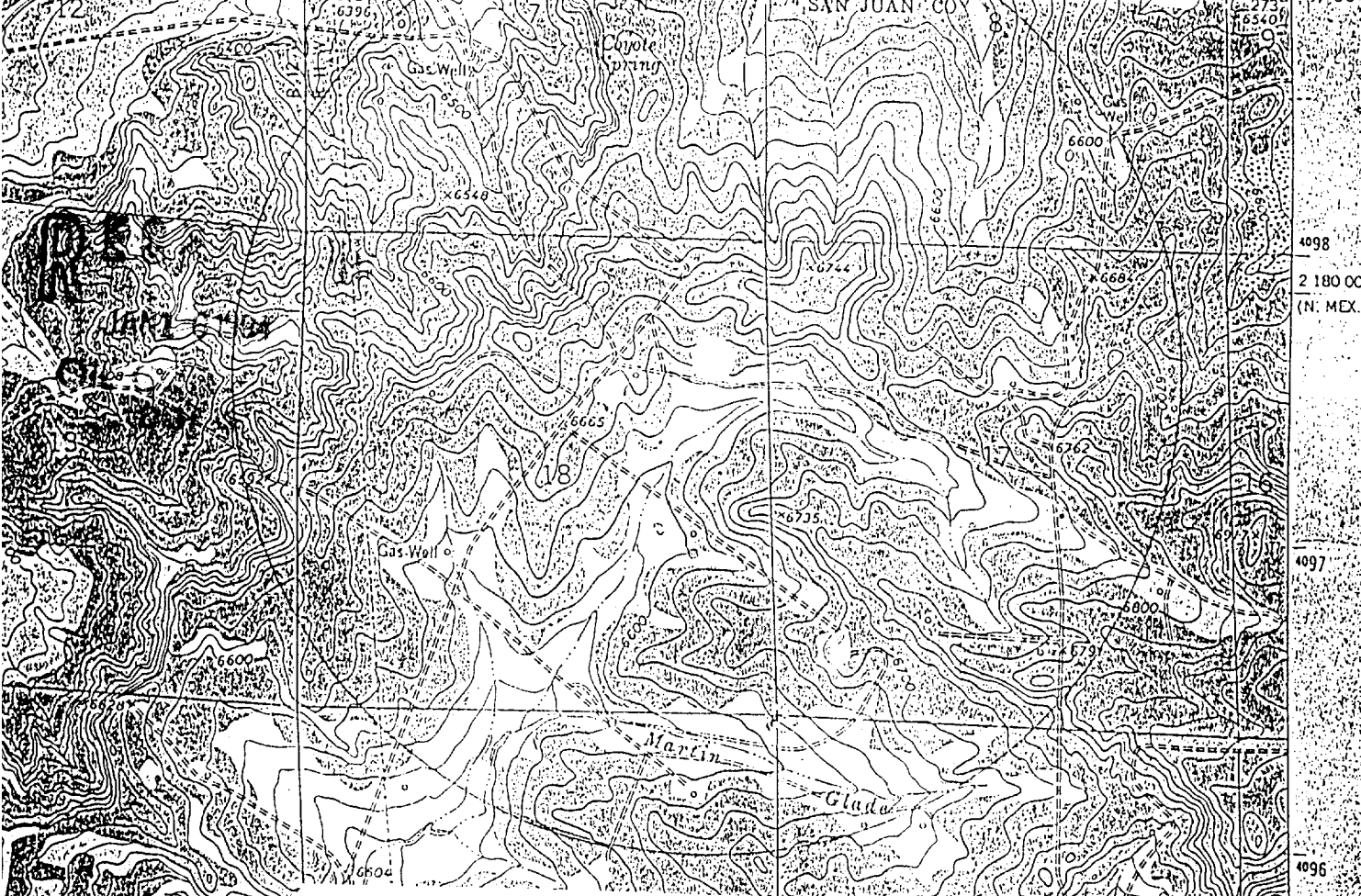
ADOBE DOWNS RANCH QUADRANGLE

NEW MEXICO-COLORADO

7.5 MINUTE SERIES (TOPOGRAPHIC)

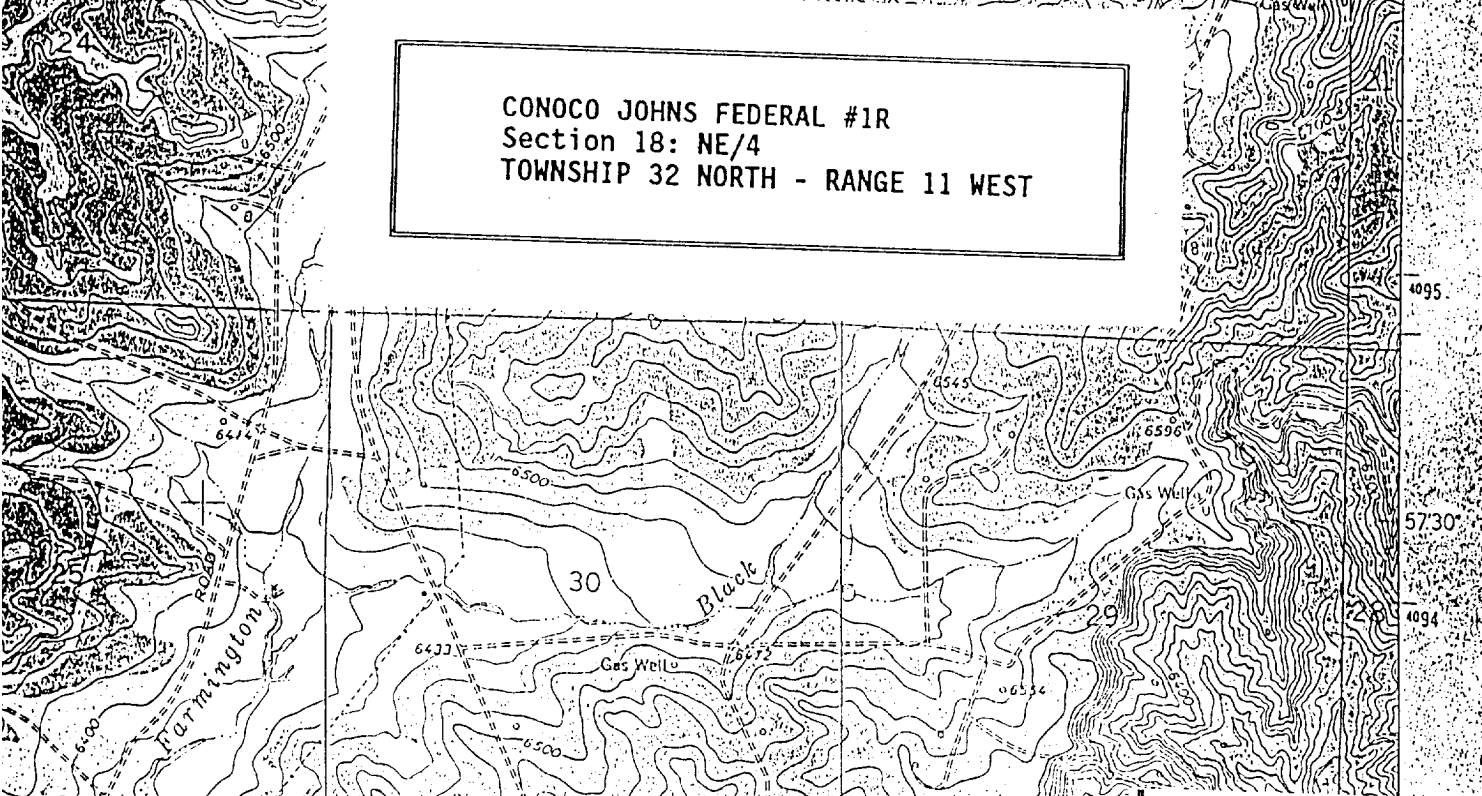
448 11 SW
LONG MOUNTAIN

12 MI. 163 2'30" SOUTHERN UTE INDIAN RESERVATION T. 32 N. 165 LA PLATA CO. 450 000 FEET (N. MEX.) 108°00' 87°00'



4098
2 180 000 FEET
(N. MEX.)
4097
4096
4095
5730
4094

CONOCO JOHNS FEDERAL #1R
Section 18: NE/4
TOWNSHIP 32 NORTH - RANGE 11 WEST



ATTACHMENT 2
(1 Page)