

UNITED STATES
DEPARTMENT OF THE INTERIOR
BUREAU OF LAND MANAGEMENT

APPLICATION FOR PERMIT TO DRILL, DEEPEN, OR PLUG BACK

1a. TYPE OF WORK

DRILL ☒

DEEPEN ☐

PLUG BACK ☐

b. TYPE OF WELL

OIL
WELL ☐

GAS
WELL ☒

OTHER

SINGLE
ZONE ☒

MULTIPLE
ZONE ☐

2. NAME OF OPERATOR

SG INTERESTS I LTD/MARALEX RESOURCES, INC.

(303) 563-4000

3. ADDRESS OF OPERATOR

PO BOX 338, IGNACIO, COLORADO 81137

4. LOCATION OF WELL (Report location clearly and in accordance with any State requirements.)

At surface 1685' FSL, 1360' FWL Sec 27-T31N-R10W

At proposed prod. zone
Same

14. DISTANCE IN MILES AND DIRECTION FROM NEAREST TOWN OR POST OFFICE

15. DISTANCE FROM PROPOSED

LOCATION TO NEAREST
PROPERTY OR LEASE LINE, FT.
(Also to nearest drlg. unit line, if any)

1685'

16. NO. OF ACRES IN LEASE

1760.0

17. NO. OF ACRES ASSIGNED
TO THIS WELL

3/320 317.11

18. DISTANCE FROM PROPOSED LOCATION
TO NEAREST WELL, DRILLING, COMPLETED,
OR APPLIED FOR, ON THIS LEASE, FT.

19. PROPOSED DEPTH

3090'

20. ROTARY OR CABLE TOOLS

Rotary

21. ELEVATIONS (Show whether DF, RT, OR, etc.)

6193' GL

22. APPROX. DATE WORK WILL START

Upon BLM Approval

23.

PROPOSED CASING AND CEMENTING PROGRAM

DRILLING OPERATIONS AUTHORIZED ARE
SUBJECT TO BLM LAND WITH ATTACHED
"GENERAL REQUIREMENTS"

SIZE OF HOLE	SIZE OF CASING	WEIGHT PER FOOT	SETTING DEPTH
12-1/4"	8-5/8"	22# 27	300'
7-7/8"	5-1/2"	15.5#	3090'

200 sx Class B plus 2% CaCl₂

Maralex Resources, Inc. proposes to drill a vertical well to develop the Fruitland Coal Formation at the above described site in accordance with the attached drilling and surface use programs.

An archaeological survey will be conducted to determine any potential sites.

All of the access road for this well is located on this lease, so no right-of-way application is required.

RECEIVED

JAN 26 1994

OIL CON. DIV.

DIST. 3

IN ABOVE SPACE DESCRIBE PROPOSED PROGRAM: If proposal is to deepen or plug back, give data on present productive zone and proposed new productive zone. If proposal is to drill or deepen directionally, give pertinent data on subsurface locations and measured and true vertical depths. Give blowout preventer program, if any.

24.

SIGNED

A.M. O'Hare

TITLE

AGENT SG INT I LTD
President, Maralex Resources

DATE December 3, 1993

(This space for Federal or State office use)

PERMIT NO.

APPROVAL DATE

APPROVED
AS AMENDED

APPROVED BY

TITLE

DATE

CONDITIONS OF APPROVAL, IF ANY:

MMOCD

JAN 28 1994

DISTRICT MANAGER

*See Instructions On Reverse Side

03813437

VIA AERO
C. 12.

Submit to Appropriate
District Office
State Lease - 4 copies
Fee Lease - 3 copies

State of New Mexico
Energy, Minerals and Natural Resources Department

Form C-102
Revised 1-1-89

OIL CONSERVATION DIVISION

P.O. Box 2088
Santa Fe, New Mexico 87504-2088

DISTRICT I
P.O. Box 1980, Hobbs, NM 88240

DISTRICT II
P.O. Drawer DD, Artesia, NM 88210

DISTRICT III
1000 Rio Brazos Rd., Aztec, NM 87410

WELL LOCATION AND ACREAGE DEDICATION PLAT

All Distances must be from the outer boundaries of the section

Operator MARALEX RESOURCES, INC.		SG Interests I LTD		Lease HART CANYON 27	Well No. 27-2
Unit Letter K	Section 27	Township 31 NORTH	Range 10 WEST	County SAN JUAN	
Actual Footage Location of Well: 1685 feet from the SOUTH line and 1360 feet from the WEST line					
Ground level Elev. 6193	Producing Formation Fruitland		Pool Basin Fruitland Coal	Dedicated Acreage: 320 3/4 Acres	

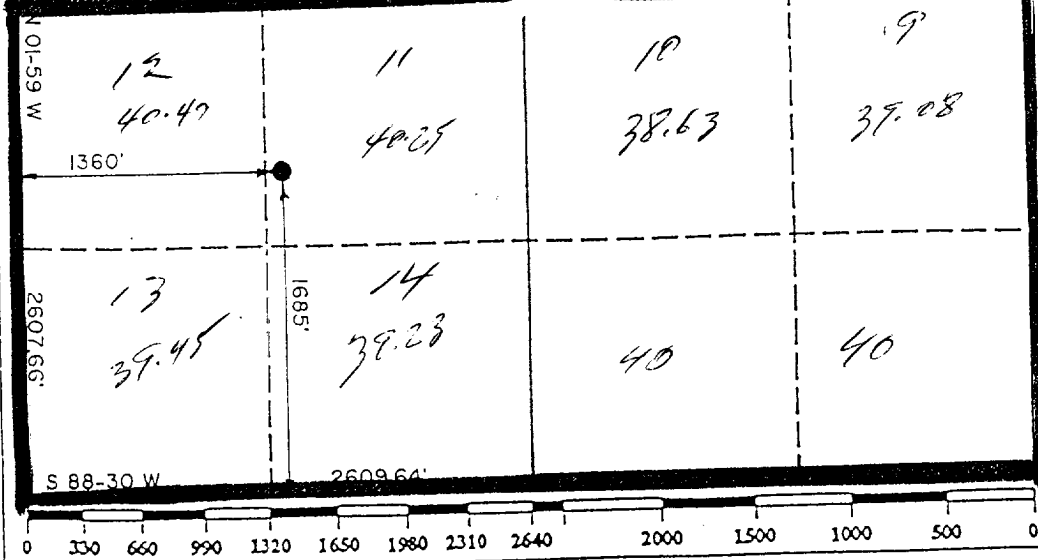
- Outline the acreage dedicated to the subject well by colored pencil or hatchure marks on the plat below.
- If more than one lease is dedicated to the well, outline each and identify the ownership thereof (both as to working interest and royalty).
- If more than one lease of different ownership is dedicated to the well, have the interest of all owners been consolidated by communitization, unitization, force-pooling, etc?
☐ Yes ☐ No If answer is "yes" type of consolidation _____
If answer is "no" list the owners and tract descriptions which have actually been consolidated. (Use reverse side of this form if necessary).
No allowable will be assigned to the well until all interests have been consolidated (by communitization, unitization, forced-pooling, or otherwise) or until a non-standard unit, eliminating such interest, has been approved by the Division.

RECEIVED

JAN 26 1994

OIL CON. DIV.
DIST. 3

SEC. 27



OPERATOR CERTIFICATION

I hereby certify that the information contained herein is true and complete to the best of my knowledge and belief.

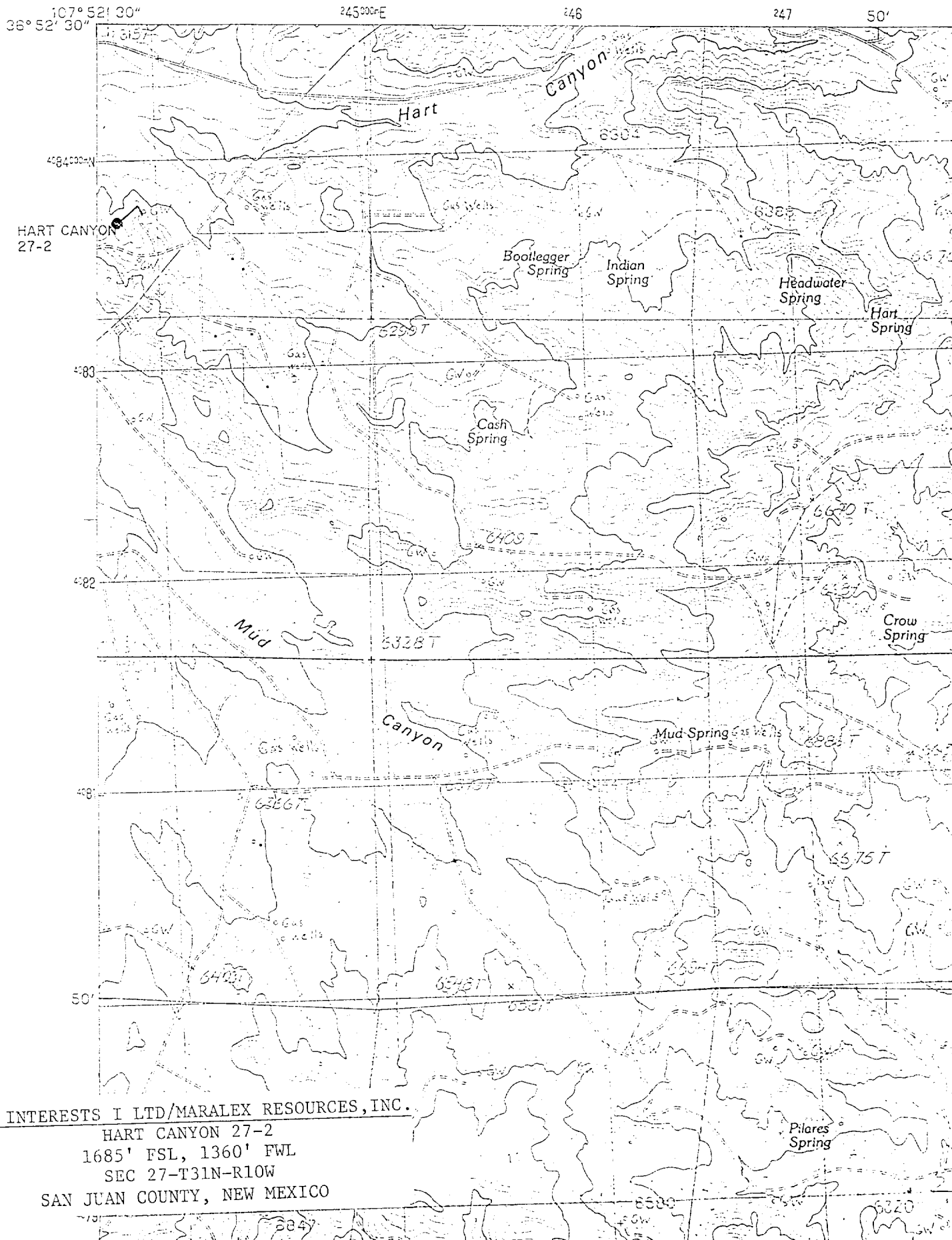
Signature **D. R. Reimers**
Printed Name **D. R. Reimers**
Position **AGENT**
Company **SG INT I LTD**
Maralex Resources, Inc.
Date **1/26/94**
December 3, 1993

SURVEYOR CERTIFICATION

I hereby certify that the well location shown on this plat was plotted from field notes of actual surveys made by me or under my supervision, and that the same is true and correct to the best of my knowledge and belief.

Date Surveyed **NOVEMBER 29, 1993**
Signature & Seal of Professional Surveyor
ROY A. RUSH
Certificate No. **8894**

UNITED STATES
DEPARTMENT OF THE INTERIOR
GEOLOGICAL SURVEY



SG INTERESTS I LTD/MARALEX RESOURCES, INC.

HART CANYON 27-2

1685' FSL, 1360' FWL

SEC 27-T31N-R10W

SAN JUAN COUNTY, NEW MEXICO