

District I  
PO Box 1980, Hobbs, NM 88241-1980  
District II  
PO Drawer DD, Artesia, NM 88211-0719  
District III  
1000 Rio Brazos Rd., Aztec, NM 87410  
District IV  
PO Box 2088, Santa Fe, NM 87504-2088

**OIL CONSERVATION DIVISION**  
**P.O. Box 2088**  
**Santa Fe, NM 87504-2088**

Instructions on back  
Submit to Appropriate District Office  
State Lease - 6 Copies  
Fee Lease - 5 Copies

☐ AMENDED REPORT

**APPLICATION FOR PERMIT TO DRILL, RE-ENTER, DEEPEN, PLUGBACK, OR ADD A ZONE**

<sup>1</sup> Operator name and Address Phillips Petroleum Company 5525 Highway 64, NBU 3004 Farmington, NM 87401		<sup>2</sup> OGRID Number 017654
<sup>4</sup> Property Code 009260		<sup>3</sup> API Number 30-045-29361
<sup>5</sup> Property Name San Juan 32-7 Unit		<sup>6</sup> Well Number #37A

UL or lot no.	Section	Township	Range	Lot. Idn	Feet from the	North/South Line	Feet from the	East/West line	County
J	8	32N	7W		2131	South	1758	East	San Juan

<sup>8</sup> Proposed Bottom Hole Location If Different From Surface

UL or lot no.	Section	Township	Range	Lot. Idn	Feet from the	North/South Line	Feet from the	East/West line	County

<sup>9</sup> Proposed Pool 1 Blanco Mesaverde 72319	<sup>10</sup> Proposed Pool 2
--	-------------------------------

<sup>11</sup> Work Type Code N	<sup>12</sup> Well Type Code G	<sup>13</sup> Cable/Rotary R	<sup>14</sup> Lease Type Code P	<sup>15</sup> Ground Level Elevation 6283'
<sup>16</sup> Multiple N	<sup>17</sup> Proposed Depth 6000'	<sup>18</sup> Formations Mesaverde	<sup>19</sup> Contractor Not Contracted	<sup>20</sup> Spud Date April 1996

<sup>21</sup> Proposed Casing and Cement Program

Hole Size	Casing Size	Casing weight/foot	Setting Depth	Sacks of Cement	Estimated TOC
12-1/4"	9-5/8"	36#, J-55	250'	130 sx C1 B	Surface
8-3/4"	7"	20#, K-55	3600'	290 sx P07 +	
				100 sx C1 B	Surface
6-1/4"	4-1/2"	10.5# liner	3500'-6000'	275 sx C1 B	*

<sup>22</sup> Describe the proposed program. If this application is to DEEPEN or PLUG BACK give the data on the present productive zone and proposed new productive zone. Describe the blowout prevention program, if any. Use additional sheets if necessary

\* The 4-1/2" casings' cement is designed to cover openhole section (with 30% excess) and 100' inside the 7" shoe (with 10% excess). See details attached to the cement (see drilling prognosis).

BOP Equipment - See Attached

<sup>23</sup> I hereby certify that the information given above is true and complete to the best of my knowledge and belief.		OIL CONSERVATION DIVISION	
Signature: <i>Ed Hasely</i>		Approved by: <i>Emile Burch</i> 3-29-96	
Printed name: Ed Hasely		Title: DEPUTY OIL & GAS INSPECTOR, DIST. #3	
Title: Environmental/Regulatory Engineer		Approval Date: MAR 29 1996 Expiration Date: MAR 29 1997	
Date: 3/25/96	Phone: 505-599-3454	Conditions of Approval: C-104 For NSL	
		Attached <input type="checkbox"/>	

District I  
PO Box 1980, Hobbs, NM 88241-1980  
District II  
PO Drawer DD, Artesia, NM 88211-0719  
District III  
1000 Rio Brazos Rd., Aztec, NM 87410  
District IV  
PO Box 2088, Santa Fe, NM 87504-2088

State of New Mexico  
Energy, Minerals & Natural Resources Department

OIL CONSERVATION DIVISION  
PO Box 2088  
Santa Fe, NM 87504-2088

Form C-102  
Revised February 21, 1994  
Instructions on back  
Submit to Appropriate District Office  
State Lease - 4 Copies  
Fee Lease - 3 Copies

☐ AMENDED REPORT

WELL LOCATION AND ACREAGE DEDICATION PLAT

<sup>1</sup> API Number <u>30-045-24361</u>	<sup>2</sup> Pool Code <u>72319</u>	<sup>3</sup> Pool Name <u>Blanco Mesaverte</u>
<sup>4</sup> Property Code <u>009260</u>	<sup>5</sup> Property Name <u>SAN JUAN 32-7</u>	
<sup>6</sup> OGRID No. <u>017654</u>	<sup>7</sup> Operator Name <u>PHILLIPS PETROLEUM CO.</u>	<sup>8</sup> Well Number <u>37A</u>
		<sup>9</sup> Elevation <u>6283</u>

<sup>10</sup> Surface Location

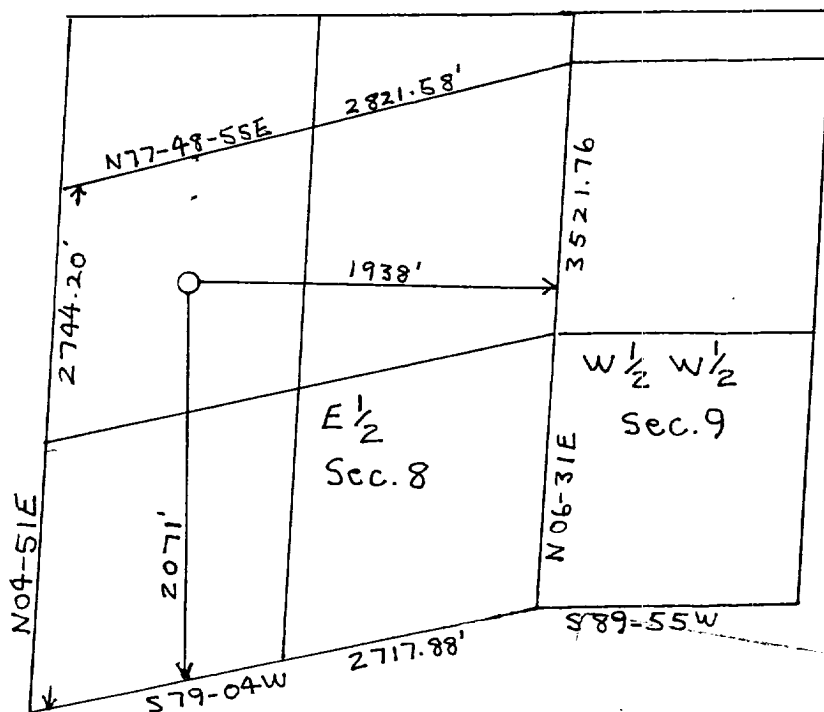
UL or lot no.	Section	Township	Range	Lot Idn	Feet from the	North/South line	Feet from the	East/West line	County
J	8	T-32-N	R-7-W		2071	SOUTH	1938	EAST	SAN JUAN

<sup>11</sup> Bottom Hole Location If Different From Surface

UL or lot no.	Section	Township	Range	Lot Idn	Feet from the	North/South line	Feet from the	East/West line	County

<sup>12</sup> Dedicated Acres <u>303.66</u>	<sup>13</sup> Joint or Infill <u>Y</u>	<sup>14</sup> Consolidation Code <u>U</u>	<sup>15</sup> Order No. <u>R-1066</u>
--	---	--	--

NO ALLOWABLE WILL BE ASSIGNED TO THIS COMPLETION UNTIL ALL INTERESTS HAVE BEEN CONSOLIDATED  
OR A NON-STANDARD UNIT HAS BEEN APPROVED BY THE DIVISION



<sup>17</sup> OPERATOR CERTIFICATION

I hereby certify that the information contained herein is true and complete to the best of my knowledge and belief

Ed Hasely  
Signature  
Ed Hasely  
Printed Name  
Environmental Eng.  
Title  
3/29/96  
Date

<sup>18</sup> SURVEYOR CERTIFICATION

I hereby certify that the well location shown on this plat was plotted from field notes of actual surveys made by me or under my supervision, and that the same is true and correct to the best of my belief.

MARCH 29, 1996

Date of Survey  
Signature and Seal of Professional Surveyor  
ROY A. RUSSELL  
REGISTERED PROFESSIONAL LAND SURVEYOR  
NEW MEXICO  
8894

Certificate Number

SAN JUAN 32-7 No. 37A  
SE/4 SEC.8, T-32-N, R-7-W, N.M.P.M.,  
SAN JUAN COUNTY, NEW MEXICO  
2131' FSL, 2018' FEL

IGNACIO 9 MI.

ATA CO

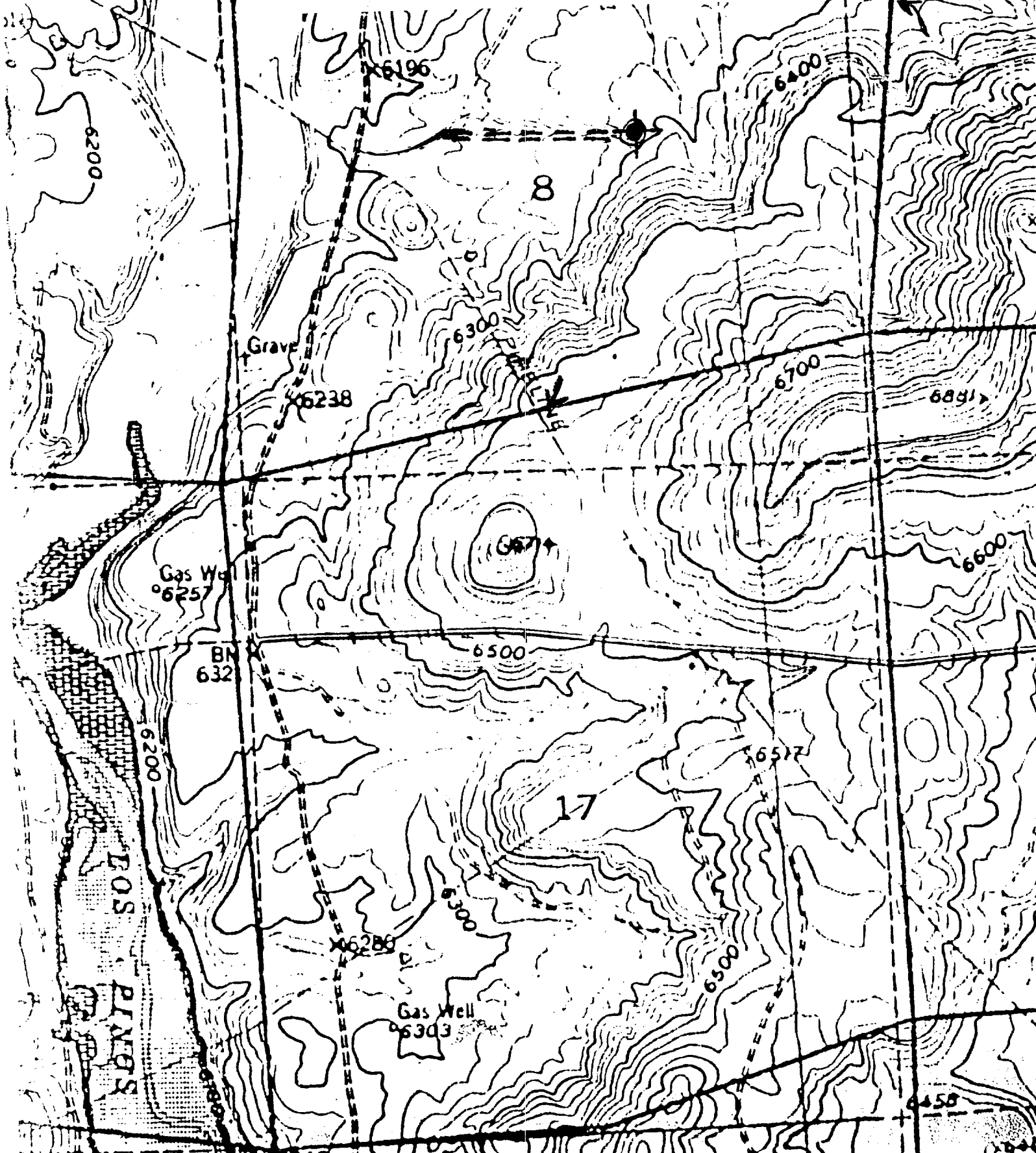
JAN CO

246

SE/4 SEC.8, T-32-N, R-7-W, N.M.P.M.,

SAN JUAN COUNTY, NEW MEXICO

2131' FSL, 2018' FEL



PHILLIPS PETROLEUM COMPANY

Preliminary 03/18/96

Well Name: San Juan 32-7 #37A

**DRILLING PROGNOSIS**

1. Location of Proposed Well: 2131' FSL & 2018' FEL, Sec. 8, T-32-N,R-7-W, San Juan County, New Mexico
2. Unprepared Ground Elevation: 6283'
3. The geologic name of the surface formation is San Jose.
4. Type of drilling tools will be rotary.
5. Proposed drilling depth is 6000'.
6. The estimated tops of important geologic markers are as follows:

<u>Ojo Alamo</u>	<u>1900'</u>	<u>Lewis</u>	<u>3360'</u>
<u>Kirtland</u>	<u>1985'</u>	<u>Cliff House</u>	<u>5140'</u>
<u>Fruitland</u>	<u>2760'</u>	<u>Menefee</u>	<u>5175'</u>
<u>Pictured Cliffs</u>	<u>3110'</u>	<u>Pt Lookout</u>	<u>5455'</u>

7. The estimated depths at which anticipated water, oil, gas, or other mineral bearing formations are expected to be encountered are as follow:

Water: Ojo Alamo - 1900'  
Gas & Water: Fruitland - 2760'  
Gas: Mesaverde - 5140' - 6000'

8. The proposed casing program is as follows:

Surface String 9-5/8", 36#, J-55 @ 250'  
Intermediate String 7", 20#, K-55 @ 3600'  
Production String 4-1/2", 10.5# Liner 3500-6000'  
Production Tubing 2-3/8" 4.7# J-55 @ 5200'

9. **Cement Program:**

Surface String 130 sx Cl B + 2% CaCl<sub>2</sub> + .25 lb/sx celloflake  
Intermediate String Flush: 10 bbls mud flush, then 10 bbls fresh water.  
Lead cmt: 290 sx 35/65 POZ + 2% CaCl<sub>2</sub> + .25 lb/sx celloflake  
Tail cmt: 100 sx Class B + 2% CaCl<sub>2</sub> + .25 lb/sx Celloflake